

NTAANA NJEREERE

Chorus IX



Ntaa-na nje - ree-re Ye - zu alu-wa? Ntaa-na nje - ree-re Ye - zu alu-wa?



Ye - zu abu-ze, ta - lii-mu, Ye - zu aluu-wa? ta - lii-mu, Ye - zu abu-ze, ta - lii-mu Ye -



zu alu-wa? ta - lii-mu. Ba-mu-ta-dde wa Mu-ka-ma wa-nge, ba-mu-ta-dde wa Mu-ka-ma



wa-nge? Ye - zu abu-ze! Ye - zu abu-ze! nku - noo-nya, nku - noo-nya, Ye noo-nya.



Oh! Lwa-ki ombu - zee-ko, na-su-ze nku - loo - ta. Lwa-ki ombu - zee-ko?
Na-su-ze nku - noo-nya, na-su-ze nze nkaa-ba.



Tutti Mu-ka-ma wa-nge lwa-ki ombu - zee-ko? Mu-ka-ma wa-nge lwa-ki obu - zee-ko?



Lwa-ki obu - zee-ko? Lwa-ki ombu - zee-ko? *Solo* Mu - kaa-bi-ra ki ba-ka-zi



Tutti ba-ttu, Ye - zu y'a-zuu-ki - ra dda. Ba-ku-tu-tte wa Mu-ka-ma wa-nge, ba-ku-tu-tte wa mu-ga-nzi



Solo wa-nge? Mu - kaa-bi-ra ki ba-ka-zi *Tutti* ba-ttu, Ye - zu gwe ba-tta gy'a-li. Ba-ku-tu-tte wa Mu-ka-ma



wa-nge, ba-ku-tu-tte wa nze mbuu-li - ra. Ba-ku-tu-tte wa Ka-bii-te wa-nge?

Solo

Tutti

Mu-le-ke ku - tya Tu - noo-nya owe Na - za-re-ti, mu-le-ke ku - tya tu - noo-nya Ye-zu
gwe ba-tta. A-zuu - ki - dde Sse-bo. Ye-zu owe Na - za-re-ti, a-zuu - ki - dde Sse-bo
Ye-zu eya-tti - bwa sso. Mu-no ta - lii-mu, Ye-zu owe Na - za-re-ti, a-zuu - ki -
dde Sse-bo Mwa-na owa Ka - to-nda. Mu-la-be eki - fo kye, Ye-zu owe Na - za-re-ti
mwe ya-tee-ke - bwa ku lu-li, Mwa-na owa Ka - to-nda. Ka-le mu - ge-nde Ba - tu-me mu-ba -
ga-mbe ama - wu-li - re ama - lu-ngi. Mu-ga-mbe bo-nna nti: Ye-zu kye ya - ga-mba ki -
tuu-fu kya-go - bye dda. Ba-ge-nde bo-nna, ba - ge-nde Ga-li - ra-ya ba - mu-la-be obu -
lu-ngi. Ba-ge-nde ma-ngu ba - ge-nde Ga-li - ra-ya ba - mu-si - si-nka - ne eyo.
A-zuu - ki - dde mu-no ta - lii-mu, a-zuu - ki - dde. a-zuu - ki - dde. *DC.*
Solo
Gwe noo-nya ka-bii-te wa-zzee-wa? Wa-zze wa Ggwe Ye-zu gwe noo-nya?!
O - ge-nze wa gwe ba-tta oge-nze wa? O - ge-nze wa nku-noo-nya

oge-nze wa? Nke-dde nnyo nku-naa-ze oge-nze wa? Bye nde-se

nku-sii-ge mbi-sse wa? A - ba-mu-sse mba-buu-za ya-zze wa? Mu -

mu-nda-ge, mu - mu-nda-ge gye mu-mu - ta-dde. O - wa-nge Ma-ri -

ya o - ka-bi-ra ki? O - wa-nge Ma-ri - ya o - noo-nya ani? O

Soprano
Noo-nya Ye - zu gwe ba-tta age-nze wa? Ba-mu-ta-dde wa nzi-ra-ge eggu-mba lye. O -

ba dda-la oma - nyi-yo yo-ge - ra. O - ba dda-la oma - nyi-yo ntwa - la, ntwa - la. O

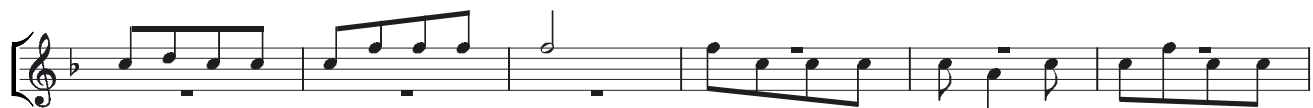
Bass solo
O - wa-nge Ma-ri - ya, Ma-ri - ya. O - wa-nge Ma-ri - ya. O ya.

Mu-yi-gi-ri - za nda-bi-ra wa, nda-bi-ra wa Sse-bo! Mu-yi-gi-ri - za nda-bi-ra wa!

Nzuu-ki-dde. Mu-yi-gi-ri - za nda-bi-ra wa, nda-bi-ra wa Sse-bo! Mu-yi-gi-ri - za nda-bi-ra

wa! To - nkwa-ta-ko. Mu-yi-gi-ri - za nda-bi-ra wa, nda-bi-ra wa Sse-bo! Mu-yi-gi-ri -

za nda-bi-ra wa! Nze nge-nda wa Taa-ta. Mu-yi-gi-ri - za nda-bi-ra wa, nda-bi-ra wa Sse-bo!



Mu-yi - gi - ri - za nda-bi - ra wa! Ge-nda ma-ngu naa-we A - ba - tu - me oba -



ga - mbe: Nni-nya wa-ggu - lu eri Ki-ta - nge e - ra Ki-ta - mmwe mwe - nna.



Nni-nya wa-ggu - lu eri Ki-ta - mmwe e - ra Ka-to-nda wa-mmwe. Tu - na - si - si - nka -



na mpo-la e Ga-li - ra-ya, tu - na - si - si - nka - na to-tya. Tu Yee



azuu-ki - dde omu-wa-ngu - zi nta-lo! Yee, azuu-ki - dde omu-wa-ngu - zi nta-lo. Tu-kwa-ni -



ri-zza Ye - zu Lu-wa-ngu - la oggu-se. Mu-wa-ngu - zi oggu-se. Ye - zu mu-ga-nzi



wa-nge, o - vu-dde-yo ema - go-mbe olu - mbe olu-go-bye n'a-maa-nyi ovu-dde-yo ema - go-mbe olu -



mbe olu-go-bye lee-ro. O lee-ro. Al - le - lu - ya, al - le - lu - ya, al - le - lu - ya, al - le - lu - ya



al - le - lu - ya, al - le - lu - ya a-zuu-ki - dde, O-mu-lo-ko - zi a-zuu-ki - dde.