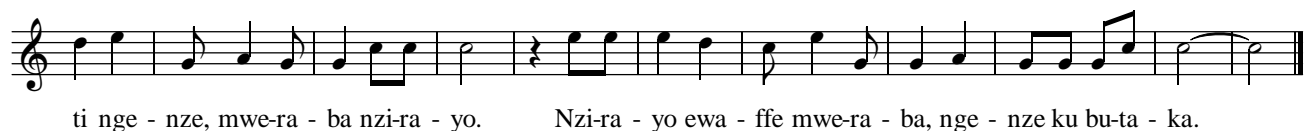
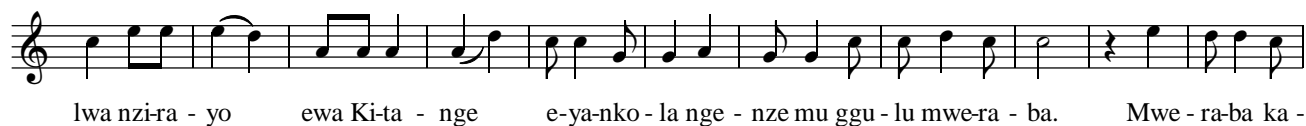


MWERABA

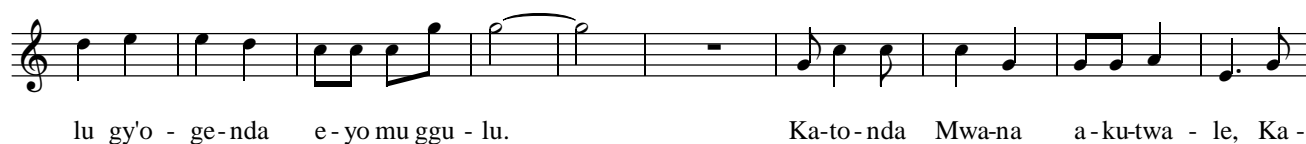
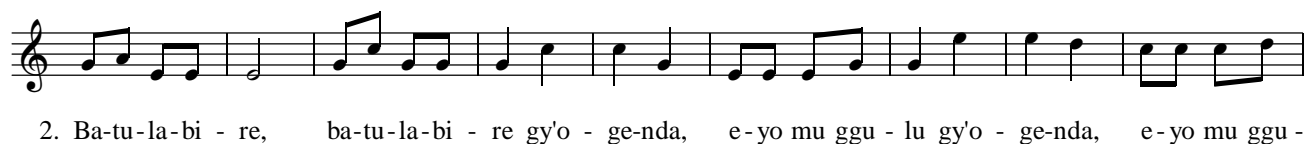
Fr. James Kabuye



1. Nzi-ki - ri - za Mu-ka-ma wa-nge nga mu-la - mu ku lw'o-lu - va-nnyu - ma na -

nge ndi-zuu - ki - ra mu ba - fu. Ndi-dda-mu na - te ne nnya-mba-zi - bwa olu-su -

su. Ka-to-nda wa-nge ndi-mu-la-bi - ra nze mu mu-bi-ri gwa-nge gu - no. *Fine*



to - nda Ki - ta - ffe akwa-ni - ri - ze, Ka-to - nda Mwo-yo a - ku-bee-re - mu emi-re -

mbe. we - nna O-jju-le Ka - to-nda, o-bu-ne Ka - to-nda, o-la-be Ka - to-nda

Ha! Faa-na-na Ka - to-nda Ma-ri-ya omu - tuu - ki - ri - vu o - mu - sa-nge

na ba - li aba - tuu - ki - ri - vu o - ba - sa - nge. O - ba - sa - nge, o - ba -

sa - nge nga ba - ku - li - nda. Lyo-nna eggu - lu, lyo-nna eggu - lu, lyo-nna eggu -

lu li - sa-nyu - ke N'e-nsi yo-nna, n'e-nsi yo-nna, n'e-nsi yo-nna e - sa-nyu -

ke ng'e - kwa-ni - ri - za. Ggwe Omwa-na wa Ka-to - nda atuu-se eka.

Bass

3. Jja - ngu omu-wee-re - za wa - nge omwe-si - gwa, jja - ngu, jja - ngu a - nti wa-wee-re -

za nze n'o-nga - nza, jja - ngu omwa-ga - lwa jja - ngu. Jja - ngu mu ki - tii-bwa ekya Taa -

ta, jja - ngu se-mbe - ra jja - ngu. Tuu-la we-ntu - dde, jja - ngu se-mbe - ra jja - ngu.

Soprano

Ki-ta-nge ky'o-ya-ga - la kii - ki - no, bu-li ye - nna ala-ba Mwa-na n'a-kki-ri - za, a -



wee-bwe obu-la-mu obu - ta-ggwa - wo, na - nge mu-zuu-ki - ze ku lw'o-lu-va-nnyu - ma.

4. Bee-sii - mye aba-fii - ra mu Mu-ka - ma ku - ba anti te - ba-zi-ki-ri - ra ku - ba anti Ba-wu-mmu -

la mi-re - mbe. Ba-wu-mmu - la mi-re - mbe. Oh Ba-wu-mmu - la,
ku - ba anti ku -

ba-wu-mmu - la, ba-wu-mmu - la mi-re - mbe. E-bi-ru - ngi bye ba-ko - la bi - ba-go-be-re -

ra. O-bu-la-mu bwa-bwe bu - fuu-ka bu - fuu-si.
bu - fuu-ka bu - fuu-si te-bu-ba-gi -

Ka-to-nda yee-ba-zi - bwe a-tu-wa-dde suu-bi li - no mu Kri - stu omu-zuu-ki - vu.
bwa-ko.

to Stanza 2 then 1 to Fine