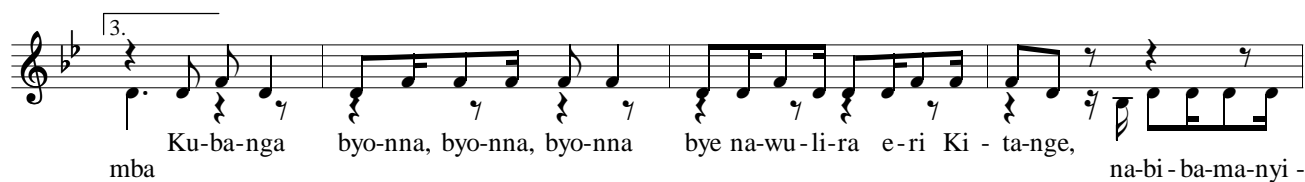


MWAGALANENGA

Ssalongo B. Mawejje





abe-bu-ngu-lu-dde. Ne Ki-ta-nge a - li-mu-wa byo-nna, byo-nna by'a-li-ba asaa-bye.



E - nsi eno bwe-ba-kya-wa-nga o-lw'o-ku-ba nze, ya - soo-ka na ku-kya-wa nze; si - te-mu-gi-tya-nga



nga mu-ba-dde ba-ntu ba nsi ya-ndi-baa-ga-dde na - ye mmwe mu-li ba-nge kye-va eba-kyaa-wa



Mu-na-jju-ki-ra - nga kye na-ba-ga-mba. Mu-na-jju-ki-ra - nga kye na-ba-ga-mba:



O-mu-ddu ta-ki - ra, mu-ka-ma we, o-mu-ddu ta-ki - ra mu-ka-ma we, o-mu-ddu



Ta-ki-ra mu-ka-ma we, ta-ki-ra o - mu-ddu ta-ki-ra mu-ka-ma we, ta-ki-ra. O -



ba-nga nze Mu-ka-ma wa-mmwe ba-ngi-gga-nya, na - ye ate mmwe mu-li - re -



ma mu-tya oku-yi-gga-nyi-zi - bwa. A - wo nno mu-gu - me, mu-gu-me, mu-gu-me mmwe.



Mu-gu-me, mu-gu-me, mu-gu-me mmwe. A - ba-yi-gga-nya omu-bi-ri te-ba-ba-yi-nza ku -



ba ebi-ga-mbo bya-nge n'e-bi-ga-mbo bya-mmwe bye bi-ri - ngu-mya omwo-yo ne gu-ta-ba na ka-mo -



go wa-dde oku-zi-ki - ri - ra. Na-nge ndi ba-tu-mi-ra Mwo-yo wa Ki-ta-nge a - li - ba-jju-la



a - li-ba-jju-za edde-mbe ba - li - sa-nga mu dde-mbe n'a-ba-fuu-la ab'e-dde-mbe. Mwa-ga-la-ne-nga,



mu-ta-ba-ga-ne-nga mu - bee-re be-nka-nya, mu - lyo-ke mu-jju-le edde-mbe lya na-ma-dda-la.



Ne Ki-ta-nge mu ggu-lu a-fu-ne eki-tii-bwa mu ggu-lu gy'a-te-re-dde, a-fu-ne eki-tii-bwa e-mi-re-mbe.