

MUSALEWO

Fr. James Kabuye



Mu - naa-tuu-sa wa? Mu-naa-tuu-sa wa? Mu-naa-tuu-sa wa o-ku - li-nnya mu bi-bi-ri? Mu li-nnya mu bi-bi-ri? Mu-sa -



le-wo, mu-sa - le-wo, e - ggwa-nga lya Ka-to-nda mu-sa - le-wo, a - ba-ntu ba Ka-to-nda mu-sa -



le-wo, a - ba-mu-wee-re-za Ka-to-nda wa ba-jja-jja mmwe mu-sa - le-wo, o - ba mu-sa-zee-wo ku-je-me -



ra Mu-ka-ma mu-sa - le-wo. Nze ku lwa-nge n'e-nju ya - nge, nja ku-wee-re - za Mu-ka-ma.



Nja ku-wee-re-za Mu-ka-ma, nja ku-wee-re - za Omu-ka-ma e-mi-re-mbe gyo-nna. Bo-nna ne ba-lee-kaa-na:



Ffe, ffe ki-ka-fuu-we o-ku-jee-me - ra Omu-ka-ma. ne tu-wee-re-za ba-lu-baa - le. Ki-ga-sa



ki? Bi-faa-na-nyi bi - sa. Ki-ga-sa ki? Ffe oku-wo-nge-ra ba-lu-baa - le. Ki-ga-sa



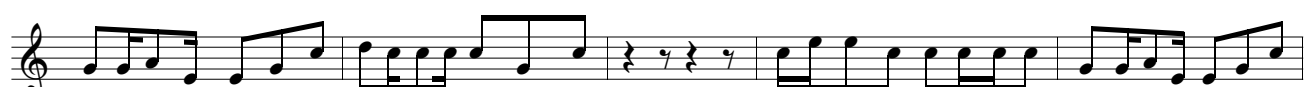
Ssi ye Mu-ka-ma Ka-to-nda wa-ffe? Ssi ye Ka-to-nda wa ba-jja - jja-ffe e-ya-tu-ggya mu nsi e-y'e Mi-si -



ri? Twa-wo-na, twa-wo-na o-ku-fu-gi - bwa obu-ddu. Twa-wo-na eki - swa-lo. Ya-ko-la e-by'a-ma-ge-ro.



Ki-ta-ffe Nanta-lemwa, ya-ko-la e-bye-wuu-nyo mu maa-so ga-ffe ffe-nnanga tu-la-ba. Ya-tu-kuu-ma n'akama-la



mu lu-ge-ndo lwa-ffe nga tu-ya-bi-ri-za eddu-ngu. Ya-tu-kuu-ma n'a-ka-ma-la mu ba-la-be ba-ffe bo -

nna ne tu-ba-saa-nya-wo ba-bu-we, bo - nna ne tu-ba-we-mme-nta. Ba Mo-ri-ti ne ba-ggwa-wo,

ba-go-bwa te-ba-dda bo - nna ne tu-ba-fuu-mu-la. Mu-ka-ma Ka-to-nda e - ya-tu-ya-mba bw'a-tyo

ka-le tu-mu-suu-la tu-tya? Tu - jja ku-wee-re-za Mu-ka-ma e-mi-re-mbe gyo-nna, tu - jja ku-wee-re-za Mu-ka-ma.

Tu Ye Ka-to-nda wa - ffe,
Y'a-tu-fu-ga ffe-nna,
E - bi-to-nde byo-nna,
Ka - to-nda w'a-ma-ggye afu-ga, Ka - to-nda w'a-ma-ggye.
Ye mu-ya-mbi wa-ffe.
a - ba-to-nde ku nsi.
bi-mu-te-nde ku nsi.

"Te-mu-so-bo-la ku-wee-re- za Mu-ka-ma, a-nti Ye Mu-tuu-ki-ri-vu nnyo. Ye Ka-to-nda w'o-bu-ggya

a - ta-ge-nda ku-ba-so-nyi - wa nga mwo-noo-nye. Ta-li-so-nyi - wa bi-bi bya-mmwe. Si-nga, si -

nga mwa-bu-li-ra Omu-ka-ma ne mu-wee-re-za ba-lu-baa - le, ky'a-li-ba-ddi - za ki-ko - li-mo.

A - li-ba-bo-nya-bo-nya n'a-ba-zi-ki-ri-za te - wa-li-si - ga-la n'o-mu. Ne-dda tu - sa-zee-wo

o - ku-wee-re-za Omu-ka-ma Ye Ka-to-nda

Mmwe mwe-ju - li - dde ffe twe-ju - li - dde, o - ku-wee-re-za Omu-ka-ma ffe twe-ju - li - dde.
Mmwe mu - sa-zee-wo ffe tu - sa-zee-wo, o - ku-wee-re-za Omu-ka-ma ffe tu - sa-zee-wo.

Ka-le mu-mu-tye Omu-ka-ma, mu-mu-wee-re-ze-nga, bu - lu-ngi mu ma-zi-ma. Mu-ba-suu-le bo-nna ba-lu-baa-le bo-nna,



ba-jja-jja-mmwe be ba-si-nza-nga. Mu-mu-wee-re-ze Omu-ka-ma n;o-mu-ti-ma gwo-nna. Tu-sa -



zee-wo, tu-sa-zee-wo O-mu-ka-ma ye Ka-to-nda wa-ffe, tu-na-mu-wee-re-za-nga. E-ddo-boo-zi lye ng'a-tu-yi-ta -



na - li-wu-li-ra-nga, tu - na - li - go-nde-ra-nga. Ye gwe tu-lo-nze o - ku-wee-re-za-nga mu bu-li nge-ri.