

MUKAMA AKUYITA

Fr. James Kabuye



1. Yee, yee, mu-la - be enni-mi - ro etu - dde. A-ma-ku-ngu - la ma -



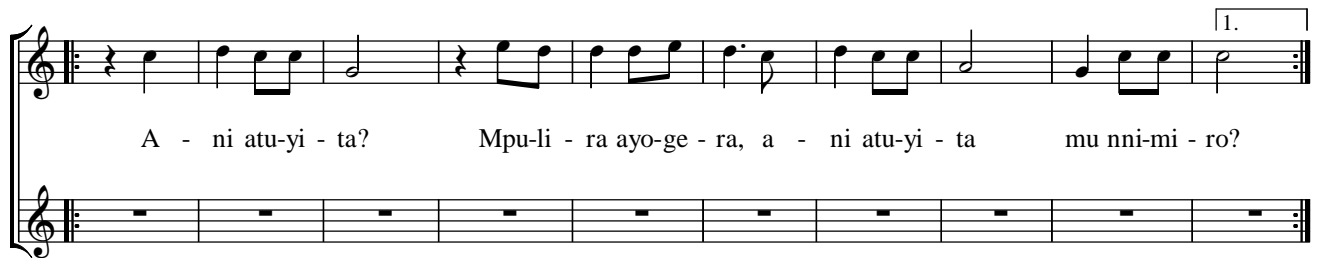
ngi bu-la - la nnyo, e - tuu - se oku-ku-ngu - la, e - ye-nge - dde yo - nna eti - nta na - ye



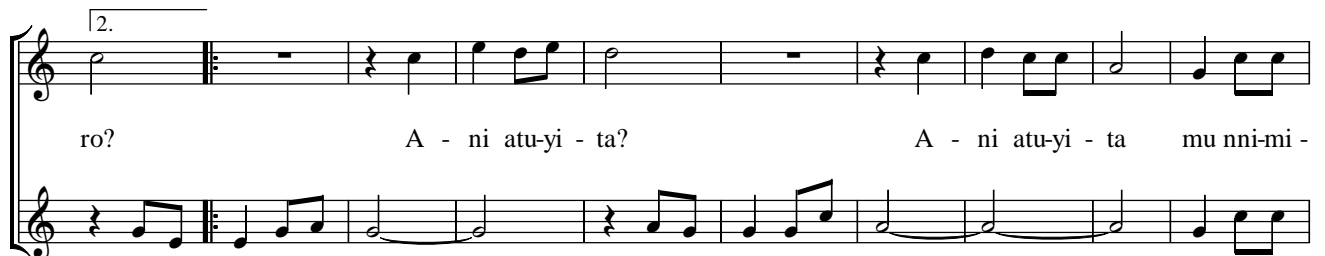
a-ba-ku-ngu - la ba-bu - ze, nze nna-ko - la ntya? Ba-bu - ze nze nna-ko - la ntya?



2. Mu-lu - wa aba-so - mi, mu-lu - wa? Mu-lu - wa aba-so - mi, mu-lu - wa, mu-nya - mbe mu-lu - wa?



A - ni atu-yi - ta? Mpu-li - ra ayo-ge - ra, a - ni atu-yi - ta mu nni-mi - ro?



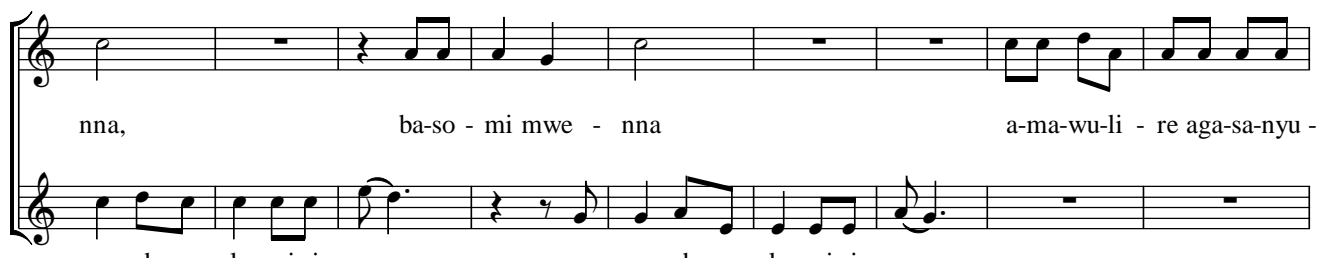
ro? A - ni atu-yi - ta? A - ni atu-yi - ta mu nni-mi -

Mu-ka - ma aku-yi - ta, Mu-ka - ma aku-yi - ta.



ro. Mu-lu wa? wa? Ba-so - mi mwe -

Mu-ka - ma atu-yi - ta. Mu-ka - Mu - ge-nde mu - la-ngi-ri - re, mu -



nna, ba-so - mi mwe - nna a-ma-wu-li - re aga-sa-nyu -

ge-nde mu - la-ngi-ri - re, mu - ge-nde mu - la-ngi-ri - re

sa a - g'e-dde - mbe ag'o-bu-lo-ko - fu. A-ma-wu-li - re aga-sa-nyu - sa ag'e-dde -

mbe, a - g'o-bu-lo-ko - fu go-nna, go-nna
 Mu-yi-gi-ri - ze ama-wa-nga go-nna, go-nna, go-nna

a-ma-wa-nga go-nna mu bi-ga-mbo ne mu bi-ko - lwa. La-ngi-ri - ra ama-wu-li -

re aga-sa-nyu - sa. Yee, mu - jje aba-zi - ra, ssaa - wa etuu - se o-ku-ku-n-gu - la.