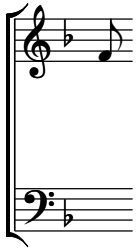


518. ULRIKA MASS II

Fr. Expedit Magembe



Ekitiibwa



E-ki-tii-bwa ki-be mu ggu - lu eri Ka-to-nda, e-mi-re-mbe ku nsi ku ba-ntu b'a-ya-ga-dde atyo.

Refrain 1



Tu-ku-si-nza, tu-ku-te-nda, tu-ku-wa eki-tii-bwa Ka - to-nda, bye-wa-ko-la bya ki-tii-bwa nnyo wee-ba-le.



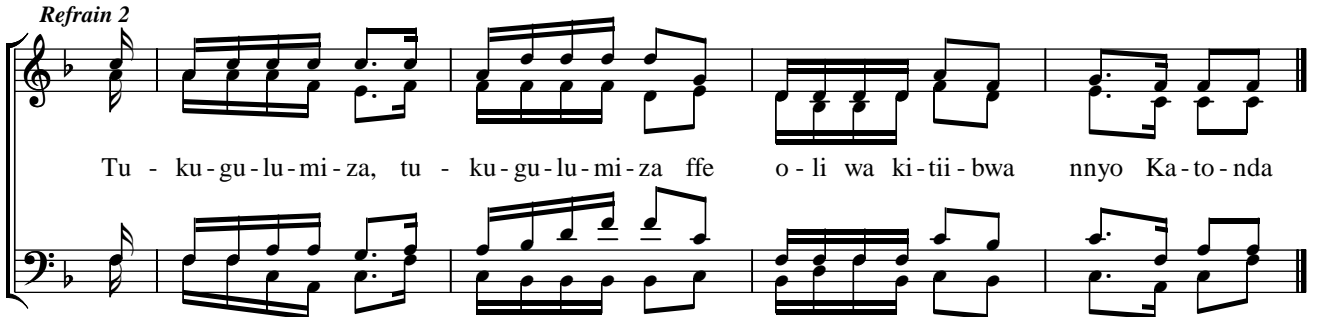
to Refr. 1

2. A-yi Mu-ka-ma Ka-to - nda, Ka-ba-ka ow'o-mu ggu-lu Ka-to-nda Pa-ti - ri omu-yi-nza wa byo - nna.



3. A-yi Mu-ka-ma Ggwe Omwanaazaali-bwaomu wekka Yezu Kristu, a-yi Mu-ka-ma Ka-tonda Omwana wa Ki-taffe.

Refrain 2



Tu - ku - gu - lu - mi - za, tu - ku - gu - lu - mi - za ffe o - li wa ki - tii - bwa nnyo Ka - to - nda



to Refr. 2

4. Ggwe aggya-wo ebi-bi by'e - nsi tu-saa-si-re, Ggwe aggya-wo ebi-bi by'e - nsi wu-li-ra okwe-ga-yi-ri - ra kwa-ffe.

to Refr. 2



5. We-kka Ggwe Mu-tuu - ki-ri-vu, Ggwe Mu-ka - ma we-kka, we-kka Ggwe osu-kki - ri-dde, Ye-zu Kri-stu.



6. Wa-mu ne Mwo-yo Mu - tuu-ki-ri-vu mu ki-tii-bwa ekya Ka-to - nda Pa-tri, A-mii- na.

A - mii - na, A - mii - na, A - mii - na, A - mii - na.

Mutuukirivu




Mu - tuu - ki - ri - vu, Mu - tuu - ki - ri - vu, Mu - tuu - ki - ri -



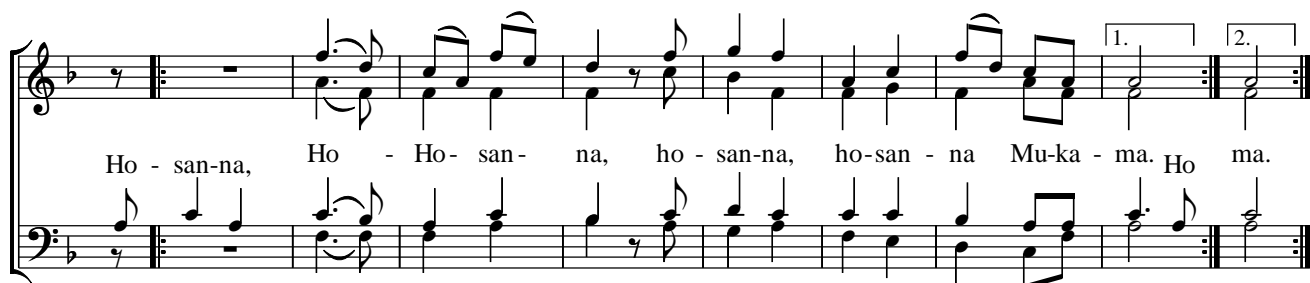
vu, Mu - ka - ma, Ka - to - nda w'a - ma - ggye.

E - ki - tii-bwa kyo, E - ki - tii-bwa kyo ki - jju - dde eggu - lu n'e -

nsi, e - ggu - lu n'e - nsi, e - ggu - lu n'e - nsi, e - ggu - lu n'e - nsi, e -



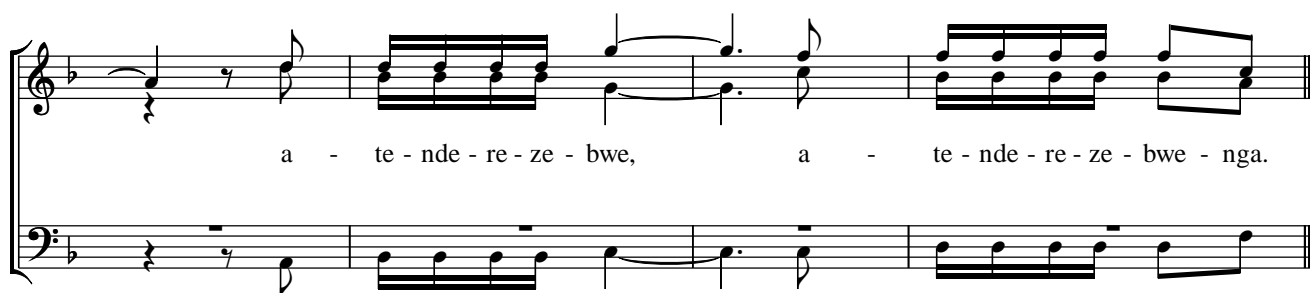
ggu - lu n'e - nsi, bi - jju - dde e - ki - tii - bwa kyo.



Ho - san-na, Ho - Ho - san - na, ho - san-na, ho-san - na Mu-ka - ma. Ho ma.



O - yo ajja, o - yo ajja, o - yo ajja mu li - nnya ly'O - mu - ka - ma



a - te - nde - re - ze - bwe, a - te - nde - re - ze - bwe - nga.