

515. *MISSA TUKUSINZA*
SAASIRA

Fr. James Kabuye

A - yi Mu-ka-ma Ggw'o-mu-saa-si - zi Ggw'o-mu-saa-si - zi Mu-ka ma omu-saa-si - zi,

Fine

a-yi Mu-ka-ma Ggw'o-mu-saa-si-zi saa-si - ra. Ggw'o-mu-saa-si-zi

saa - si - ra. A-yi Kri-stu a-yi Kri- stu

Ggw'o-mu-saa-si - zi Ggw'o-mu-saa-si - zi Kri - stu omu-saa-si - zi saa-si - ra.

a - yi Kri-stu a - yi saa - si - ra.

EKITIIBWA

Recitative

E - ki - tii - bwa ki - be mu ggu - lu eri Ka - to - nda.

1. N'e - mi - re - mbe ku nsi ku ba - ntu b'a - ya - ga - dde atyo.

Yo - nna mu ggu-lu ne mu nsi ffe tu-ku-te - nda tu-ku-gu-lu-mi - za ggwe Ka-to-nda wa-ffe.

2. Ffe tu-ku-te- nda tu-ku-gu-lu-mi-za tu-ku-si-nza, tu-ku-saa-mu eki-tii-bwa, wa-ko-la bya ki-tii-bwa nnyo we-ba-le



3. A - yi Mu - ka - ma ggwe Ka - to - nda, Ka - ba - ka w'o - mu ggwe - lu Ka - to - nda Pa - tri, o - mu - yi - nza wa bu - li ka - ntu.



4. A - yi Mu - ka - ma ggwe omwa - na a - zaa - li - bwa omu ye - kka, Ye - zu Kri - stu.



5. A - yi Mu - ka - ma ggwe Ka - to - nda, A - ka - li - ga ggwe aka Ka - to - nda, O - mwa - na wa Pa - tri.



6. Ggwe aggya - wo ebi - bi by'e - nsi, tu - saa - si - re, ggwe aggya - wo ebi - bi by'e - nsi wu - li - ra okwe - ga - yi - ri - ra kwa - ffe.



7. Ggwe atu - dde ku gwa ddyo ogwa Pa - tri, ggwe atu - dde ku gwa ddyo tu - saa - si - re.



8. Ku - ba - nga ggwe mu - tuu - ki - ri - vu we - kka, ggwe Mu - ka - ma we - kka Ggwe osu - ki - ri - dde we - kka Ye - zu Kri - stu.



9. Wa - mu ne Mwo - yo Mu - tuu - ki - ri - vu, mu ki - tii - bwa kya Ka - to - nda Pa - tri A - mii - na A - mii - na.

MUTUUKIRIVU

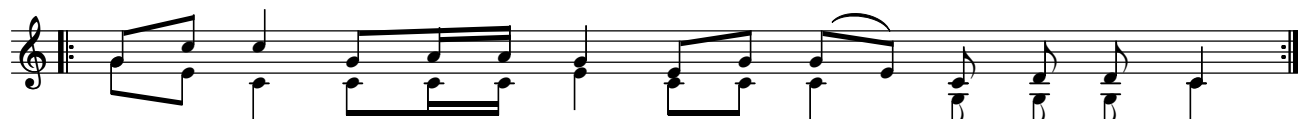
Recitative



Mu - tuu - ki - ri - vu nnyo Mu - ka - ma Ka - to - nda w'a - ma - ggye mu - tuu - ki - ri - vu nnyo,



Mu - ka - ma Ka - to - nda w'a - ma - ggye mu - tuu - ki - ri - vu. E - ki - tii - bwa kyo ki - jju - dde eggu - lu n'e - nsi.



Ho - sa - nna wa - ggu - lu eyo, ho - sa - nna wa - ggu - lu eyo.



O - yo ajja mu li - nnya ly'O - mu - ka - ma ate - nde - re - ze - bwe Ho - sa - nna wa - ggu - lu eyo,



O - yo ajja mu li - nnya ly'O - mu - ka - ma ate - nde - re - ze - bwe Ho - sa - nna wa - ggu - lu eyo,

KALIGA KA KATONDA

Recitative

Ka-li-ga ka Ka-to-nda, Ka-li-ga ka Ka-to-nda Ggwe Ka-li-ga ka Ka-to-nda, gwe aggya-wo ebi-bi bye nsi

tu-saa-si-re; Ffe tu-saa-si-re Ka-li-ga ka Ka-to-nda ffe tu-saa-si-re ggwe aggya-wo ebi-bi by'e-nsi

Ka-li-ga ka Ka-to-nda ffe tu-saa-si-re Ggwe aggya-wo ebi-bi by'e-nsi tu-saa-si-re. tu-we emi-re-mbe.