

# 514. MISSA TUKUTENDEREZA

## AYI MUKAMA

Fr. James Kabuye

*Recitative*

A - yi Mu-ka-ma omu-saa-si - zi saa-si - ra. A - yi Mu-ka-ma omu-saa-si - zi saa-si - ra.

A - yi Mu - ka - ma omu - saa - si - zi saa - si - ra.

Saa - si - ra, Kri - stu omu - saa - si - zi saa - si - ra.

Kri - stu omu - saa - si - zi saa - si - ra. A - yi Kri - stu omu - saa - si - zi saa - si - ra.

A - yi Mu-ka-ma omu-saa-si - zi saa-si - ra. A - yi Mu-ka-ma omu-saa-si - zi saa-si - ra.

A - yi Mu - ka - ma omu - saa - si - zi saa - si - ra.

## EKITYIBWA

*Recitative*

1. N'emirembe ku - nsi, ku ba - ntu bayaga - dde atyo.

*Chorus*

Tu - ku - te - nda, tukusaamu eki - tyi - bwa Ddu - nda, wa - kola bya kityi - bwa nnyo we - ba - le.

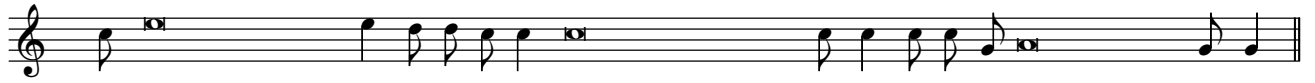
2. Tu - ku - te - nda, tukugulumiza, tu - ku - si - nza, tukusaamu eki - tyi - bwa.

3. Ayi Mukama Ggwe Ka - to-nda, Ka-ba-ka ow'o-mu ggu-lu Ka-to-nda Pa-tri, o-mu-yi-nza wa bu-li ka-ntu.

4. A - yi Mu - ka - ma Ggwe Omwa - na, a - zaalibwa omu ye - kka, Ye - zu Kri - stu.



5. A - yi Mu - ka - ma Ggwe Kato - nda, Ggwe Aka - li - ga ka Ka - to - nda O - mwa - na wa Pa - tri.



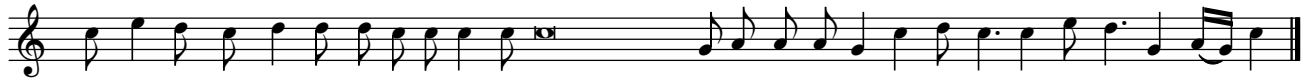
6. Ggwe aggyawo ebibi by'e-nsi tu-saa-si-re, Ggwe aggyawo ebibi by'e-nsi wu-li-ra okwegayirira kwa-ffe.



7. Ggwe atudde ku gwa ddyo ogwa Pa - tri, Ggwe atudde ku gwa ddyo tu - saa - si - re.



8. Ku - ba - nga ggwe Mu - tuu - ki - ri - vu we - kka, Ggwe Mukama we - kka, Ggwe ossuukiridde we - kka, Ye - zu Kri - stu.



9. Wa - mu ne Mwo - yo Mu - tuu - ki - ri - vu, mu kityibwa kya Ka - to - nda Pa - tri, A - mii - na, a - mii - na, a - mii - na.

### NZIKIRIZA KATONDA OMU

*Recitative  
Intonation*



Nzi - ki - ri - za Ka - to - nda omu.

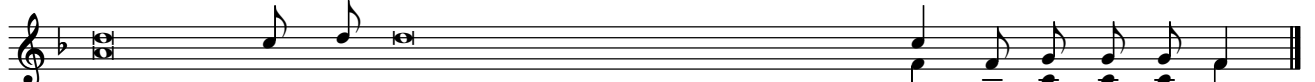


1. Pa - tri omu - yi - nza wa bu - li ka - ntu, e - ya - ko - la eggu - lu n' e - nsi, na byo - nna ebi - ra - bi - ka, n' e - bi - ta - la - bi - ka.

*Chorus*



Nzikiriza nze Pa - tri eya - nto - nda, nzikiriza ne Mwa - na eya - ndo - ko - la,



nzikiriza ne Mwo - yo Mutuku - vu e - ya - ntu - ku - za.



2. Nzikiriza Mukama wa - ffe omu Ye - zu Kri - stu, O - mwa - na omu atyi o - wa Ka - to - nda



Pa - tri gw' a - zaa - la, nga n' e - mi - re - mbe gyo - nna te - gi - nna - ba - wo.



3. Ye Ka - to - nda a - va mu Ka - to - nda, Kye - ki - ta - ngaa - la ekya - va mu ki - ta - ngaa - la,



Ye Ka - to - nda dda - la a - va mu Ka - to - nda dda - la o - mu atyi.



4. Ya - zaalibwa buzaa - li - bwa, te - ya - to - nde - bwa.



Ye ne Pa - tri mu bwa Kato - nda be ba - mu dda - la, byo - nna, Ye ya - bi - ko - la.



5. O - yo, ku lw'okubeera ffe abantu olw'okutu - lo - ko - la,



ya - va mu ggu - lu n'a - kka, n'a - funa omubiri mu Bikira Mari - a



ku bwa Mwoyo Mutuu - ki - ri - vu, n'a - fuu - ka omu - ntu.



6. E - ra olw'okubeera ffe, ya - ko - me - re - rwa ne ku musaala - ba



n'abonabona ku mi - re - mbe gya Po - nti - o Pi - la - to, n'a - zii - ki - bwa.



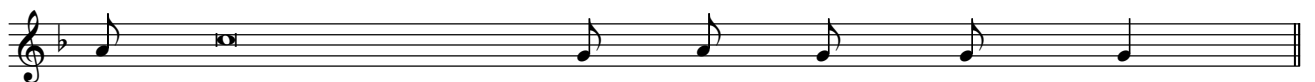
7. N'a - zuu - ki - ra ku lw'e - ssa - tu nga bwe kya - li mu biwandii - ko,



n'a - li - nnya mu ggu - lu, a - tu - dde ku gwa ddyo ogwa Pa - tri.



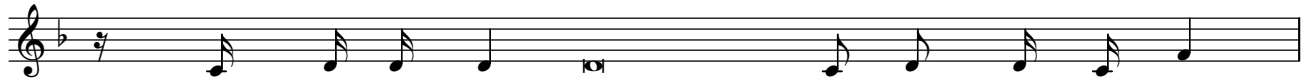
8. A - li - jja ogwo - ku - bi - ri n'e - ki - tyi - bwa o - kulamula abala - mu n'a - ba - fu,



o - bwakabaka bwe te - bu - li - gwa - wo.



9. Nzikiriza MwoyoMu-tuu-ki-ri-vu, O-mu-ka-ma, a - wa n'obula - mu, a - va mu Pa-tri ne Mwa-na.



10Ggwe tu - si - nza awamu ne Pa - tri ne Mwa - na,



ne tumugulumiza ki - mu bu - li - jjo, e - ya - yo - ge - re - ra oyo mu ba - la - nzi ab'e - dda.



11. Nzikiriza Batis - mu emu, e - sonyiwa ebibi byo-nna, a - te nnindirira okuzuukira okw'abu,



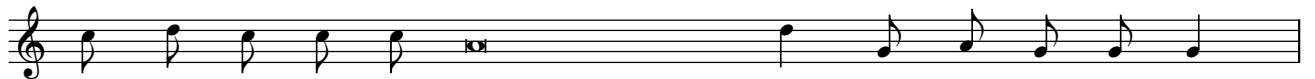
n'obulamu obw'emire - mbe egi - ri - ggya, A - mii - na.

### MUTUUKIRIVU

*Recitative*



Mu - tuu - ki - ri - vu, mu - tuu - ki - ri - vu o - yo. Mu - tuukirivu, mutuu-kirivu o - yo.



Mu - tuu - ki - ri - vu, Mukama Katonda w'ama - gye, mu - tuu - ki - ri - vu,



Mu - ka - ma Ka - to - nda w'a - ma - gye, mu - tuu - ki - ri - vu.



E - ki - tyibwa kyo ki - jju-dde eggu-lu n'e-nsi, e - ki - tyi-bwa kyo ki - jju-dde eggu-lu n'e-nsi.



Ho - san - na wa - ggu - lu eyo, ho - san - na wa - ggu - lu eyo, ho - san - na wa - ggu - lu eyo.



O - yo ajja mu linnya ly'Omu-ka - ma atendereze - bwe, atendereze - bwe,



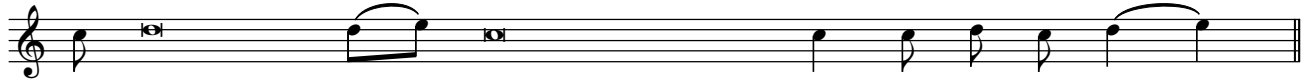
O - yo ajja mu linnya ly'Omu-ka - ma atendereze - bwe.

## AKALIGA

*Recitative*



A - kaliga ka Ka - to - nda ggwe aggya - wo ebibi by'e - nsi tu - saa - si - re.



A - kaliga ka Kato - nda ggwe aggyawo ebibi by'e - nsi tu - saa - si - re.



A - kaliga ka Kato - nda ggwe aggyawo ebi - bi by'e - nsi, tu - we emi - re - mbe.