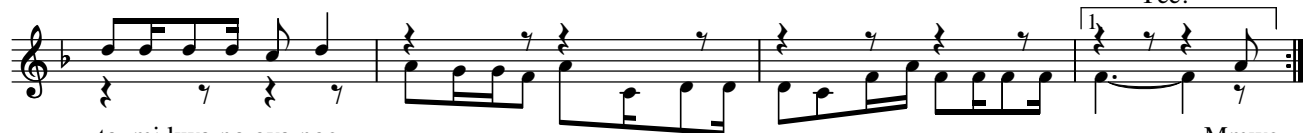


492. MMWE ABANGOBERERA

Fr. Expedit Magembe



Mmwe aba-ngo-be-re-ra si - kya-ba-yi-ta-nga mmwe ba-ddu n'a-ka-mu, mba-yi -

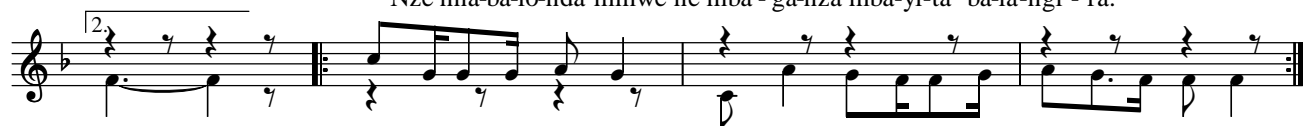


ta mi-kwa-no gya-nge.

Yee!

Mmwe

Nze nna-ba-lo-nda mmwe ne mba - ga-nza mba-yi-ta ba-la-ngi - ra.



ra.

- | | |
|--------------------------------|--|
| 1. Mwa-le-ka ebi - ru - ngi, | mwe-nna mwa-le-ka ebi - ru - ngi ne mu-jja. |
| Mwa - le-ka aba - za - dde, | mwe-nna mwa-le-ka aba - za - dde ne mu-jja. |
| 2. Mwa - le-ka ama - ka ago, | mwe-nna mwa-le-ka ama - ka ago ne mu-jja. |
| Mwa - le-ka ebi - ba - nja, | mwe-nna mwa-le-ka ebi - ba - nja ne mu-jja. |
| 3. Mwa - le-ka obu - ga - gga, | mwe-nna mwa-le-ka obu - ga - gga ne mu-jja. |
| Mwa - le-ka ebi - tii - bwa, | mwe-nna mwa-le-ka ebi - tii - bwa ne mu-jja. |



ra.

4. Mu-jje mu ki-tii - bwa, mwe-nna abaa-le-ka ebi - tii-bwa ne mu-jja. Ki -



ta - nge k'a - ba - wee - re, mwe - nna Taa - ta k'a - ba - wee - re Omu - to - nzi.