

# 491. MARITHA OTAWUKA

Fr. Expedit Magembe



1. Ma-ri - a ne Ma-ri-tha ba-ya-ni-ri-za Kri - stu mu ma-ka gaa - bwe,

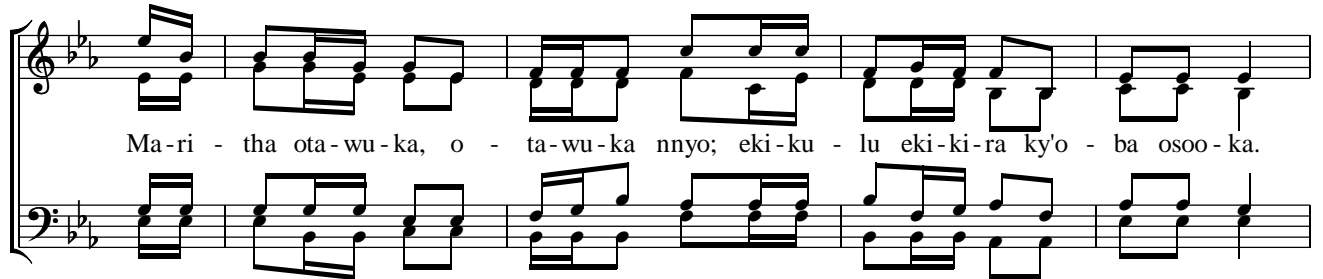


Ma-ri - a ye n'a-sii-ma o-ku-nyu-mya n'O-mu-ka - ma ky'a-ba asoo - ka.

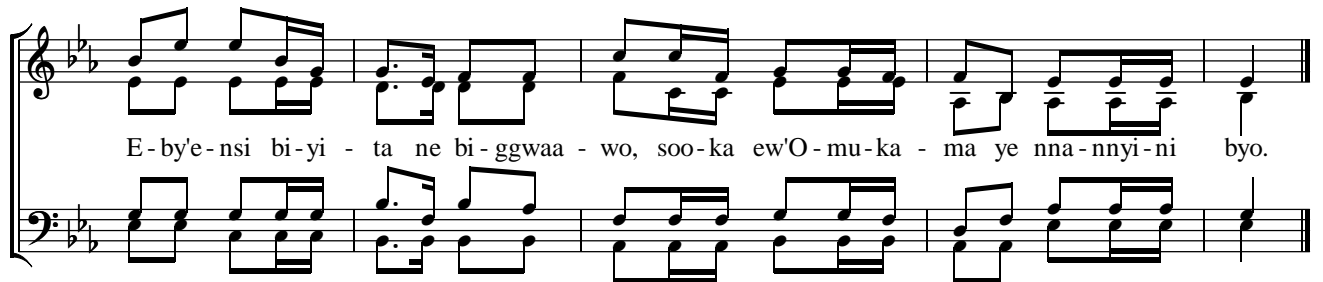


O-mu-ka-ma ya-ne - nya Ma-ri-tha nti ota-wu-ka, Ma-ri - tha oli-mba o - ta-wu-ka nnyo.

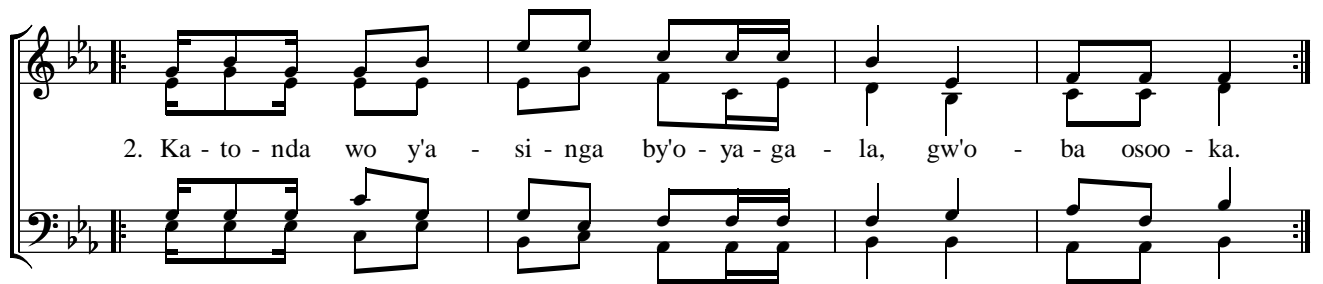
## Chorus



Ma-ri - tha ota-wu-ka, o - ta-wu-ka nnyo; eki-ku - lu eki-ki-ra ky'o - ba osoo - ka.



E-by'e-nsi bi-yi - ta ne bi-ggwa - wo, soo-ka ew'O-mu-ka - ma ye nna-nnyi-ni byo.



2. Ka - to - nda wo y'a - si - nga by'o - ya - ga - la, gw'o - ba osoo - ka.



Ka-to-nda wo y'a - si-nga bye wee-go - mba ne by'o-te-ge - ka osoo-ka-nga wu - we.

3. E-nsi eno e - ri-mba nnyo, e - ri-mba bu-lu-ngi n'e-ka-ma-la Bw'e-ku-sa-nyu-sa oluu - si ema-ti-za, ne Ka -

to-nda omu-lu-ngi n'o-mu-le-ka. Ng'o-ta-wu-ka ng'o-dda mu-li, ng'o - noo-nya sse-nte y'e-si-nga.

Mu-nno oyo a-ku-daa-gi-ra o - buu-ka mu-buu-ke ng'o-ge-nda. E-ddii-ni by'e-ku-sa-ba o -

zii-mu-la ebyo n'o-ka-ma-la. Ng'o-ta-wu-ka ng'o-dda mu-li, ng'e - by'o-ku-so-ma ebyo obi - sa-mba-ija.