

434. MUJJE BAANA BANGE ABATUKUVU

Fr. James Kabuye



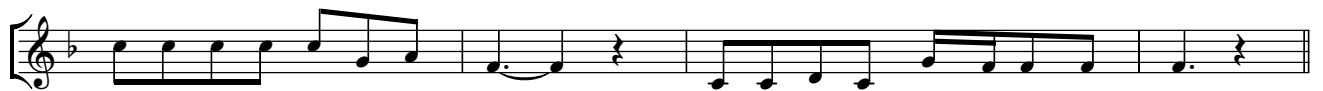
Mu - jje, mu - jje a-baa-na ba-nge. Mu - jje, mu - jje mu-la-mu -



lwe. Mu - jje, mu - jje mwe-ya - nze mu ssa-nyu e-ry'o-lu-bee-re - ra.



1. Ba-tu - yi-gga-nya olw'e-ddii - ni. Twa-le-ka byo-nna oku-bee-ra eri-nnya lyo.



Tu - li - fu - na ki ffe Ye - zu ku lu - na - ku olw'o - lu - va - nnyu - ma.



3. A - yi Ye - zu, A - yi Ye - zu, A - yi Ye -



zu. o - tu - ya - mbe tu - zi - ki - ri - ra.