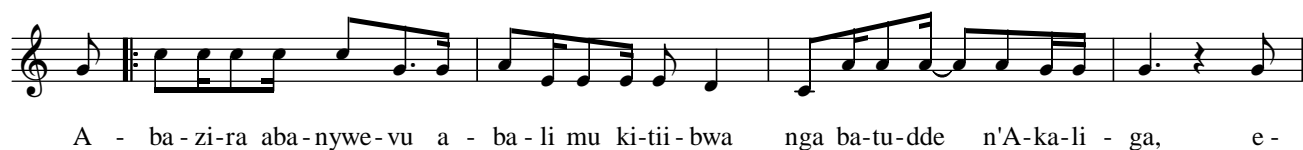
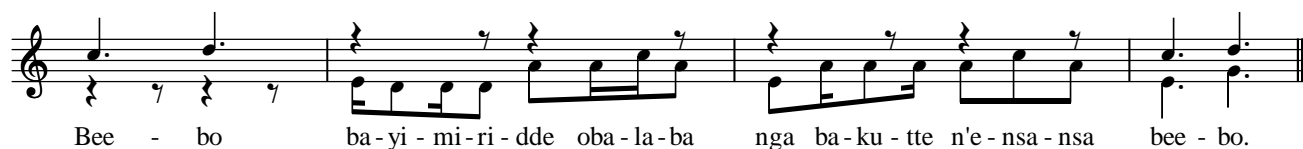
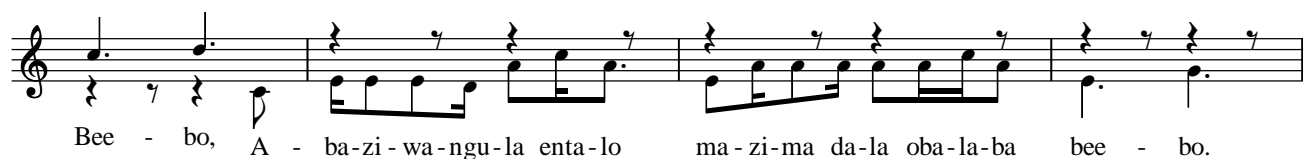
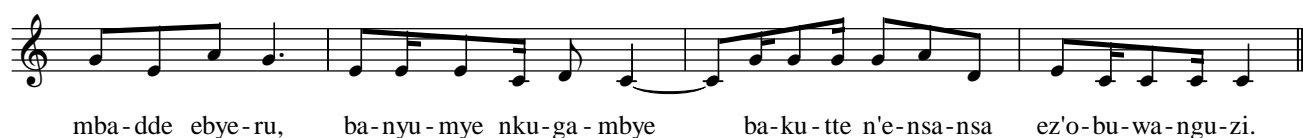


427. BEEBO ABAAYOZA ENGOYE MU MUSAAYI GW'AKALIGA

Fr. Expedit Magembe



Chorus



saa-yi gw'o-mu-we-ndo gu - li gwe baa-ba-naa-za O-mu-saa-yi gw'A-ka-li - ga. Bee-bo, bee -
 bo aba-zi-ra ba-nna-mi-ge abo, bee-bo, la - ba ba-li wa-mu n'A-ka-li - ga Bee-bo, ti-ba -
 kya-lu-mwa nja-la baa-tuu - ka bee-bo, a - nti ba-li wa-mu n'A-ka-li - ga Bee-bo, e -
 nyo-nta n'e-nja-la bya-ggwa dda, bee-bo, a - nti ba-li wa-mu n'A-ka-li - ga Bee-bo, ti-ba -
 kya-bo-naa-bo-na bee-sii - ma, bee-bo, a - nti ba-li wa-mu n'A-ka-li - ga Bee-bo, o -
 kwo oku-kaa-ba kwa-ggwa dda, bee-bo, a - nti ba-sa-nyu-ka n'A-ka-li - ga. bee bo.
 Bee-waa-yo ba - lwa-na, a-ba-li eri Eh, ba-lwa - na a-ba-li eri ffe tu-li mu dde-ne twe-su -
 nga, a-ba-li eri eh, lu-li-kya nno ne tu-ba-tuu-ka, e - yo, e - yo, e - yo.