

# 199. MBONAABONA

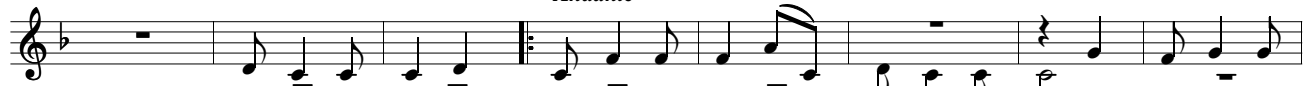
Joseph Kyagambiddwa

*Largo*



Mbo-naa - bo - na, mbo-naa - bo - na, mbo-naa - bo - na

*Andante*



mbo-naa - bo - na. A - yi ako-me - re-ddwa mbo-naa - bo - na. Ye - zu ow'o-mu -  
mno nnaa-ko - la ntya, Baa - ba ofii - ri -



kwa- no, mbo-naa - bo - na. ba - mbi ozi - ri - ka ofa, mbo-naa - bo - na, ki oba-naa - bo -  
ra nze, na - nge nzi - ri - ka nfa, nzuu - no nkaa-bi -



na otyo, mbo-naa - bo - na. nga enna - ku eku - yi - nze mbo-naa - bo - na. nze na. Ssa -  
ra ggwe, Ye - zu gwe na - ga - nza,



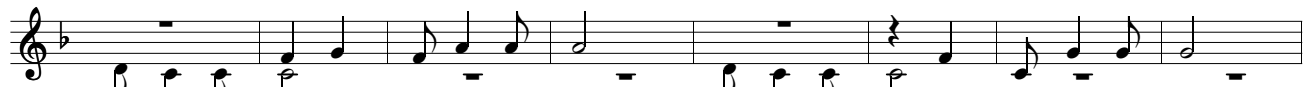
ba-nu-nu - zi, e-ndwa - de olwa-de ki? Ssa E -  
ba-nu-nu - zi, mbo-naa-bo - na. o - fu - dde okwa-ga - la mbo-naa-bo - na. na.



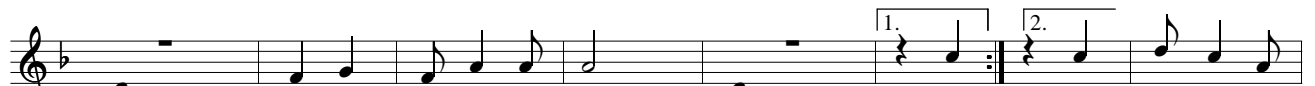
nsi n'e-ggu - lu bi - na - ku - wa - la, a - nti n'e-nju -  
nga aba-mbo - wa nze no aku-si - ssa, na - nge ba-nzi -  
mu - mpe eky'o - ku - nywa, mu - mpe eky'o - ku - nywa,



ba efuu - se te - ya - ka ezaa - mye. mbo-naa - bo - na. Ye - zu nkwa-ga - la,  
te, nfe tu-fe wa - mu naa - we. Ye - zu omwa-ga - zi



mbo-naa - bo - na. o - fu - dde n'o - nde - ka. mbo-naa - bo - na. Ye - zu nkwa-ga - la,



mbo-naa - bo - na. ntwala - eyo gy'o - la - ga mbo-naa - bo - na. Si Mwe - nna mwe-ra -  
na.



ba, mu - mpe eky'o - ku - nywa, wuu - no asii - bu - la. Ye a - twa - ga -  
Mbonaabona 1 mu - mpe eky'o - ku - nywa,

la afu - dde olw'o-ku - bee-ra ffe. mbo-naa-bo - na. Ye - zu nkwa-ga - la,

mbo-naa-bo - na. o - fu - dde n'o-nde - ka. mbo-naa-bo - na. Ye - zu nkwa-ga - la,

mbo-naa-bo - na. ntwala - eyo gy'o-la - ga mbo-naa-bo - na. Ggwe Nnya-bo la - ba, mu -

mpe eky'o-ku - nywa, wuu - no Omwa-na wo,. mu - mpe eky'o-ku - nywa, bw'a - tyo alaa-ma

Ggwe Maa - ma Omwa-na wo wuu - no. mbo-naa-bo - na. Ye - zu nkwa-ga - la,

mbo-naa-bo - na. o - fu - dde n'o-nde - ka. mbo-naa-bo - na. Ye - zu nkwa-ga - la,

mbo-naa-bo - na. ntwala - eyo gy'o-la - ga mbo-naa-bo - na. Eh!\_\_\_\_\_

\_\_\_\_\_

*moriendo*  
Mbo-naa - bo - na, mbo-naa - bo - na, mbo-naa - bo - na.