

YOGAYOGA FR. KABUYE

Moderato

Andrew Katongole

mf

Yo-ga-yo - ga Fa-ther Ka-bu - ye. Yo-ga-yo - ga, yo-ga-yo -

Wa - mma yo-ga-yo - ga, wa - mma yo-ga-yo -

ga, yo-ga-yo - ga, yo-ga-yo - ga o - ku-we - za emya - ka ataa -

ga, yo-ga-yo - ga, yo-ga-yo - ga, yo-ga-yo - ga

no ng'o - li mu-sa-ser - doo - ti dda-la, ng'o - li mu-sa-ser - doo - ti dda-la, ng'o -

li mu-sa-ser - doo - ti, ng'o - li mu-sa-ser - doo - ti; ng'o-wee-re - za Omu-ka-ma

Bi - ta-mbi -

dda-la

e - bi - ta-mbi - ro ku Alta-li yo. O - li mu-sa-ser - doo - ti, o - li mu-sa-ser -

ro

O - li mu-sa-ser - doo - ti

doo - ti mu lu-bu lwa Me-le - ki - se-ddee - ki e - mi-re-mbe gyo - nna.

Twe-ba-za nnyo Ka - to-nda Lu-ga - ba e - ya-ku - wa eki-to-ne eky'o-ku-yi - mba, naa-we yee-ba - le

n'o-ki-ko-ze - sa e - ra ki-tu-ga - sa oku-te-nde-re - za wo-nna mu Ekle-zi -

a ku-mu-wee - sa eki-tii - bwa. Yee-ba-le Ka - to-nda ne Mwo-yo we a-ba-ko-ze - sa.

Piu mosso
Ka-to-nda yee-ba-zi-bwe, Ddu-nda atwa-ga - la yee - ba - zi - bwe, yee - ba - zi -

Ka-to-nda yee-ba-zi-bwe, Ddu-nda atwa-ga - la, Ka-to-nda yee - ba-zi - bwe, yee - ba - zi - bwe, yee - ba - zi - bwe, yee - ba - zi - bwe Ddu - nda, Ka - to-

la e-ya-tu-wa Fa-ther Ka-bu-ye yee-ba-le, yee-ba-le, a-twa-ga-la bwe nda e-ya-tu-wa Fa-ther Ka-bu-ye yee-ba - le, yee-ba-le, yee-ba -

yee-ba-le, yee-ba-le, yee-ba-le eya-mu-tu - wa.
 le, yee-ba-le, yee-ba-le, yee-ba-le oyo. Ka-ti ng'a-tuu-se mu mya-ka gye egy'o-bu -
 mu-kuu-me, mu-kuu-me, mu-kuu-me a-wa - ngaa-le, a - wa-ngaa-le nnyo.
 ka-dde mu-kuu-me, mu - kuu-me a-wa- ngaa-le, a - wa-ngaa-le nnyo.

MUTEEKETEEKE ENTUJJO

Fr James Kabuye

Mu-tee-ke-tee-ke entu - jjo, mu-tee-ke - tee-ke entu-jjo, mu-tee-ke-tee-ke entu -
 jjo n'a-ma-ta-bi aga-ju-dde e - bi-koo-la by'e-mi-ti. Mu-yi-se eki-vvu-lu o-kwe-ba-za Ka -
 to-nda by'a-ko-ze enku-mu, ha! Ka-to-nda w'a-maa-nyi asaa-na kwa-ga - lwa. Mu-yi-se eki-vvu-lu
 saa-na kwa-ga-lwa, mu-yi-se eki-vvu-lu a-saa-na kwa-ga - lwa Omu-ka-ma ye mu-lo-ko - zi wa-nge
 Mu-ka - ma mu-wa-ngu-nzi e-ri-nnya lye mu-ta-baa-zi, mu-ta-baa - zi mu-ta-baa-zi e-ri-nnya
 lye mu-ta-baa-zi, e-ri-nnya lye mu-ta-baa-zi. A - ba-la - be ba-nge ba - ntaa-yi-zza ba -
 ntaa-yi-za, nga ba-li - nga enju-ki ezi-saa-la ba - ntaa-yi-za, ba-me-ma bu-li-ro mu ma-ggwa, na-dda
 ba-ka-mbwe ba - ka - mbwe, ba-ka-mbwe

wa nze na-dda wa, nze na-dda wa, nze na-dda wa zi-nsa - nze. mbu nno ngwe Ba-nsi-ndi-ka ba -

nsi-ndi-ka, mbu nno ngwe, ba-nsi-ndi-ka mbu nno ngwe. Ba-si-ndi-sa obu - swa-ndi, ba-nsi-ndi-sa obu -

swa-ndi mbu nno ngwe. Na-ye mu li-nnya ly'O-mu-ka-ma, na-ba-be - te-nta, na-ye mu li-nnya

ly'O-mu-ka-ma na-ba-be - te-nta, na-ye mu li-nnya ly'O-mu-ka-ma na-ba-zi - sa, na-ba-zi -

sa, na-ba-zi - sa. Mu-ka-ma ge maa-nyi ga-nge bwe bu-lo-ko - fu, Mu-ka - ma ge maa-nyi

ga-nge y'a-mpa-ni-ri - ra, Mu-ka-ma bu-zi-ra bwa-nge ye Mu-lo-ko - zi Mu-ka - magemaa-nyi

ga-nge y'a-mpa-ni-ri - ra, Mu-ka-ma a-mpa-ngu-za nsi ye Mu-lo-ko - zi nze mwe-si-ga ku -

DC.
fa. Bwe ba - nyi-gi - ri - za, Bwe mba nju-gu-mi-ra, Mu ssaa-wa ey'a-ka-bi, A - nywe-za ne ngu-ma, bwe mba nte - re - bu-ka, bwe mba nte - re - bu-ka, mu bu-dde obw'o-ku-fa, ya - mpa obu - wa - ngu-zi,

Ddyo w'O-mu-ka-ma maa-nyi g'a-li - na ga ki-ta-lo, ddyo w'O-mu-ka-ma maa-nyi 'a - li - na ga nsu-ss

tu - dde, maa-nyi g'a - li - na ga ki-ta-lo, ddyo w'O - mu-ka-ma, maa-nyi 'a - li - na ga nsu - sso

te-ndwa, maa-nyi g'a-li - na ga ki-ta-lo, ddyo w'O-mu-ka-ma, maa-nyi 'a-li - na ga nsu-ssu Nda-yi-dde

si - jja ku-fa nja ku-la - ma, nda-yi-dde, si - jja ku-fa nja ku-la - ma. nda-yi-dde

Ndi-ro-jja, ma e - bi-kuu-no by'O-mu-ka-ma by'a-tu-ko-le-dde, ndi - ro-jja e - bi-kuu-no by'O-mu-ka-ma

by'a-ko-la mu ba-ntu. Ye mu-ya-mpi ow'a-maa-nyi Mu-ka-ma Ka-to-nda. Nja ku-mwe-ba-za
Bwe bu-zi - ra bw'a - ba - ngi abe-si-ga Ka-to-nda.
Ye Mu-lo - ko - zi w'a - bo abe-si-ga Ka-to-nda.

nja ku-mwe-ba-za Omu-ka-ma, na-mu-yi-mpi-ra; na-mu-yi-mpi-ra, na-mu-yi-mpi-ra ku ndo -

ngo na-mu-yi-mpi - ra. Bwe y'a - mbo-ne - re - za Taa-ta te - ya - nzi - ta. Nnyu -
Nga ngu - dde mu ka - bi Taa-ta y'a-nsaa - si - ra.

mba ya Ya-ko-bo e-ga - mbe, nnyu - mba y'Aa-ro-ni k'e-ga - mbe Yi -
o-ku - saa-si-ra kwe kwa mi-re-mbe gyo-nna, o-ku - saa-si-ra kwe kwa mi-re-mbe

mba Ke-le-zi-a o-ga - mbe, Mu-nzi-gu - li - re emi-rya-ngo
gyo-nna o-ku - saa-si-ra kwe kwa mi-re-mbe gyo-nna. O - mu-lya-ngo gw'O-mu-ka-ma

egy'o-bu-tu-ku-vu, nze mwe-mpa mpi-ta nge-nde okwe-ba-za Ka-to-nda Tu-ba-wa ka - ti omu-ki-sa
o - mu-tu-ku-vu, nze mwe-mpa mpi-ta nge-nde okwe-ba-za Ka-to-nda

ffe nga tu-yi-ma mw'e-yo ennyu-mpa y'O-mu-ka-ma eye-yo-le-ka aba-ntu. Ggwe Ka-to-nda wa-nge ando-ko -

la nze nkwe-ba-za, nkwe-ba-za Ka-to-nda Ddu - nda atu-lo-ko-la. Nkwe-ba-za, nkwe-ba-za,

1. nku-gu - lu - mi - za nnyo nku-te - nda. 2. nku-gu - lu - mi - za nnyo nku-te - nda.

MUJJE TUJAGUZE FFENNA

Fr. James Kabuye

Mu - jje tu-ja-gu-ze ffe-nna, tu-ku - be emi-zi-ra ffe-nna, ku - ba Mu-ka-ma aya-mba aba-ntu be

n'a-ba-lo-ko-la n'a-ba-lo-ko-la n'a-ba-lo-ko-la n'a-ba-lo-ko-la mu-jje tu-ja-gu-ze ffe -
n'a-ba-lo-ko - la n'a-ba-lo-ko-la bo - nna mu - jje tu-ja-gu-ze ffe - nna ffe -

nna ffe-nna tu-ku-be emi-zi - ra tu - ja-gu-ze tu-ku-be emi-zi - ra mi-zi-ra mi-zi-ra e -
tu-ku-be emi-zi-ra

nna tu-ja-gu-ze ffe-nna tu-ku be mi - zi - ra

gy'o-ku-mu-ku-mu e-gy'o-ku-mu-ku-mu e - gy'o-ku-mu-ku-mu e-gy'o-ku-mu-ku-mu. tu-ku -

tu-ku-be emi-zi-ra mi-zi-ra mi-zi-ra mi-zi - ra mi-zi-ra mi-zi-ra mi-zi-ra e -
 be emi-zi-ra mi-zi - ra tu-ku - be emi-zi-ra mi - zi - ra mi -

gy'o-ku-mu-ku-mu li-vu - ge li-vu-ge li-vu -
 zi - ra. E-tte-ndo lye li-vu - ge mu ki-bi-nja ky'a-ba-tuu-fu, li-vu-ge li-vu-ge li-vu-ge li-vu -

ge li-vu-ge li-vu-ge mu ki-bi-nja ky'a-ba-tuu-fu li-vu-ge li-vu-ge li-vu - ge li-vu-ga wo-nna
 ge li - vu - ge e-tte-ndo lye e-tte-ndo

mwe-ba-ze Ddu-nda li-vu - ge li-vu-ge li-vu-ge li-vu-ge tu-ku-be mi-zi -
 lye e-tte-ndo lye li - vu - ge li-vu-ge mu - jje tu-ja-gu-ze ffe-nna

ra tu-ku - be emi-zi-ra tu-ku-be emi-zi-ra mi - zi - ra tu -
 tu-ku - be emi - zi - ra ffe mi-zi - ra mi-zi-ra mi-zi-ra tu
 mu-jje tu-sa-nyu-ke ffe-nna mi - zi - ra tu -

Fine

mwe - ba - ze Mu - lo - ko - zi a - twa - ga - la atyo ffe e - ggwa - nga lye.

mwe - ba - ze atwa - ga - la atyo ffe e - ggwa - nga lye.

1. Mu - yi - mbi - re Omu - ka - ma o - lu - yi - mba - lu - ggya,
 2. Ka - to - nda mu - mu - te - nde b'a - nu - nu - dde bw'a - tyo.

1. Mu - yi - mbi - re Omu - ka - ma o - lu - yi - mba olu -
 2. Ka - to - nda mu - mu - te - nde b'a - nu - nu - dde bw'a -

mu - yi - mbi - re Ka - to - nda mu - te - nde - nga e - ri - nnya lye ettu - ku -
 O - mwa - na we omu - ga - nzi dda - la n'a - fa ffe abaa - na be atu - wo -
 ggya, mu - yi - mbi - re Ka - to - nda e - ri - nnya lye
 tyo. O - mwa - na we omu - ga - nzi ffe abaa - na be

vu
 nye mu - ja - ga - nye mu - ja - ga - nye mu - ja - ga - nye aba - ntu be lee - ro
 mu - ja - gu - ze mu - ja - ga - nye mu - ja - ga - nye ba - ntu be

mwe - nna aba - ntu be lee - ro mwe - nna aba - ntu be mwe - nna aba - ntu be ka - ba - ka aba - fu - ga mwe -
 ba - ntu be ba - ntu be ba - ntu be ka - ba - ka afu - ga

nna ba - fu - ga ku lu - no mwe - ja - ge ku - ba Omu - ka - ma aya - ga - la eggwa - nga lye e - ri - mu - go - nde - ra.
 b'a - fu - ga mwe - ja - ge

MUMUTENDEREZE

allegro

Fr. James Kabuye 13/02/1992

Mu-mu - te-nde-re-ze mu-mu-te-nde-re-ze mu-mu - te-nde-re-ze mu-mu-te-nde-re-ze

mu - mu -

mwe - nna mwe - nna mu - mu - te - nde mu - mu - te -

te - nde - re - ze mu - mu - te - nde - re - ze mu - mu - te - nde - re - ze mu - te -

nde mu - mu - te - nde mu - te - nde mu - mu - te - nde

nde mu - te - nde mu - mu - te - nde mu - mu - te - nde mu - mu - te

mu - mu - te - nde - re - ze mu - mu - te - nde - re - ze mu - mu - te - nde

nde mu - mu - te - nde - re - ze mu - mu - te - nde - re - ze mu - mu - te - nde - re -

Yee mu - mu - te - nde - re - ze mu - mu - te - nde - re - ze mu - mu - te - nde - re - ze mu - te -

ze mu - mu - te - nde - re - ze mu - mu - te - nde - re - ze mu - te - nde - re -

nde mu bba - nga ery'o - bu - yi - nza bwe mu bba - nga ery'o - bu - yi - nza bwe mu bba - nga

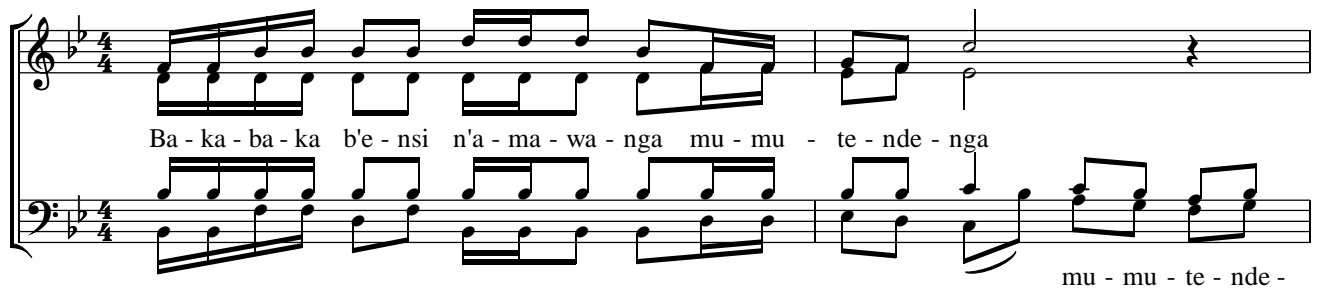
ery'o - bu - yi - nza bwe mu bba - nga ery'o - bu - yi - nza bwe ery'o - bu - yi - nza bwe
mu bba - nga bwe mu

ly'o - bu - yi - nza bwe ly'o - bu - yi - nza bwe mu ggu - lu dda - la mu ggu - lu dda - la
bba - nga mu bba - nga

mu bi - re eyo mu bi - re eyo mu bi - re eyo mu bi - re eyo mwe - nna mu - mu - te - nde
nnyo e - yo e - yo mu - te - nde

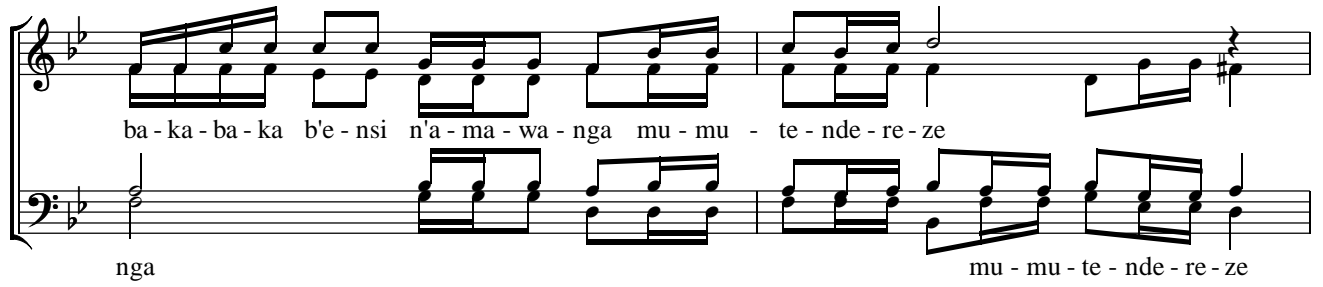
mwe - nna mu - mu - yi - mbe mu - mu - te - nde mu - mu - te - nde mu - mu - te - nde mu - mu - yi - mbe mu - mu - te - nde
mu - yi - mbe mu - mu - te - nde mu - mu - yi - mbe mu - te - nde

mu - mu - te - nde mu - mu - te - nde mu - mu - te - nde a - ma - ggye ge go - nna.
mu - te - nde mu - te - nde mu - te - nde



Ba - ka - ba - ka b'e - nsi n'a - ma - wa - nga mu - mu - te - nde - nga

mu - mu - te - nde -



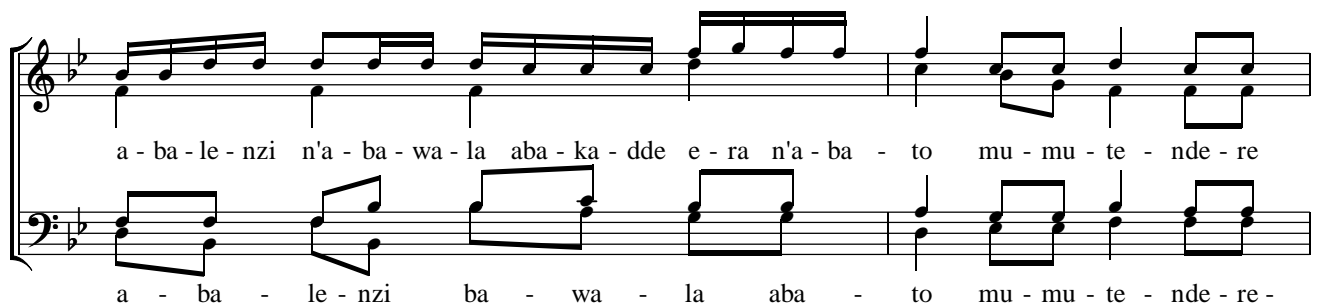
ba - ka - ba - ka b'e - nsi n'a - ma - wa - nga mu - mu - te - nde - re - ze

nga mu - mu - te - nde - re - ze



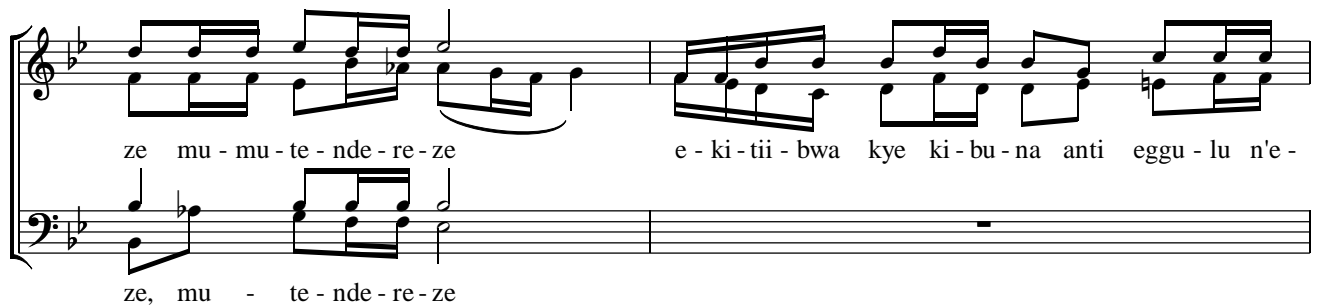
a - ba - ku - ngu n'a - ba - la - mu - zi mu - mu - te - nde - re - ze

mu - te - nde mu - te - nde



a - ba - le - nzi n'a - ba - wa - la aba - ka - dde e - ra n'a - ba - to mu - mu - te - nde - re

a - ba - le - nzi ba - wa - la aba - to mu - mu - te - nde - re -



ze mu - mu - te - nde - re - ze e - ki - tii - bwa kye ki - bu - na anti eggu - lu n'e -

ze, mu - te - nde - re - ze

nsi eno nsi eno nsi eno e - ki - tii - bwa kye ki - bu - na
e - ki - tii - bwa kye ki - bu - na anti eggu - lu n'e - nsi

ggu - lu n'e - nsi ki - bu - na ggu - lu n'e - nsi e - ki - tii - bwa ki - bu - na
e - ki - tii - bwa kye ki - bu - na anti ggu - lu n'e - nsi e - ki - tii - bwa kye ki - bu - na

ggu - lu n'e - nsi ki - bu - na ggu - lu n'e - nsi ki - bu - na ggu - lu n'e - nsi
ki - bu -

ggu - lu n'e - nsi, ggu - lu n'e - nsi ggu - lu n'e - nsi
na ggu - lu n'e - nsi n'e - nsi ki - bu - na ggu - lu n'e - nsi ki - bu -

ggu - lu n'e - nsi e - ggu - lu n'e - nsi e - ggu - lu n'e - nsi e - ggu - lu n'e -
na

nsi e - nsi mu - mu - te - nde - re - ze mu - mu - te - nde - re - ze mu - mu - te - nde - re - ze

te - nde - re - ze mu - mu - te - nde - re - ze mu - mu - te - nde - re - ze Ka - to - nda w'a - ma - ggye.

25. ATENDEREZEBWENGA KATONDA

Fr James Kabuye

1. A - te-nde-re-ze - bwe, a - te-nde-re-ze - bwe a - te-nde-re-ze - bwe, a - te-nde-re-ze - bwe.

a - te-nde-re-ze - bwe-nga Ka - to-nda oyo, Ki - ta - we wa Ye - zu Mu-ka-ma wa-ffe a - ate-nde-re-ze - bwe-nga emi - re-mbe; a - te-nde-re-ze - bwe-nga emi - re-mbe.

2. Ku - ba - nga y'a - twe - ro - bo - za, nga n'e - nsi te-nna-to-nde - bwa, y'a - twe - ro - bo - za nga n'e - nsi te-nna-to-nde - bwa. a. O - ku - va ddi? nga n'e - nsi te-nna-to-nde - bwa, mu ma - b. wa ki - sa nnyo Ye Ki - c. ng'a-tu - ga - nza o - ku - d. y'a - tu - wa nnyo e - bi - soo-ka. ta - ffenga n'e-nsi te-nna-to-nde - bwa bwa. 3. Tu - bee-re ba - tuu-ki-ri - vu, tu - bee-re ba - yi - nga mu maa-so ge ru - ngi

tuu - ki - ri - vu, mu maa-so ge tu - bee - re ba - tuu - ki - ri - vu, mu maa-so ge a - ba - ta - li - na na bba - ge

la; mu maa - so ge mu maa - so ge. 4. Nga y'a - tee - ka - tee - ka,

mu mu - ti - ma gwe omu - saa - si - zi. y'a - tee - ka - tee - ka, mu mu - ti - ma gwe omu - saa - si -

zi; y'a - tee - ka - tee - ka, mu mu - ti - ma gwe omu - saa - si - zi; twa - fuu - ka baa - na, mu mu - ti - ma

gwe omu - saa - si - zi, twa - fuu - ka baa - na mu Kri - stu Omwa - na we.

5. Ffe aba - ntu tu - li baa - na bo dda - la, dda - la, ma - zi - ma ffe - nna tu - li baa - na be, ma - zi -

ma ffe - nna tu - li baa - na be dda - la, dda - la; dda - la, dda - la ffe - nna

tu - li baa - na be.

- a. Tu - li baa - na be ffe - nna oyo Kri - stu be ya - lo - nda -
- b. Tu - li ba - si - ka ffe - nna oyo Kri - stu y'a - tu - ku - li -
- c. Tu - li ba - yi - se ku nsi ffe Kri - stu y'a - tu - ta - mbu -
- d. Tu - li ba - gu - mu ffe - nna oyo Kri - stu be ya - lo - nda -
- e. Tu - li - tuu - ka - yo ffe - nna eyo Kri - stu ffe gye tu - la -

tu - li baa - na be, dda - la ffe - nna tu - li baa - na be.
 mu, twe - ya - nze Taa - ta.
 ra, twe - ya - nze Taa - ta.
 za, n'a - tu - zza ewa - ffe.
 mu, a - nti ya - sii - ma.
 ga, Ki - ta - ffe ali - nze.

375. MUNAAYITIBWANGA BASASERDOOTI

Fr. James Kabuye

Mu - naa-yi-ti-bwa-nga ba - sa-se-r-doo-ti lu-se lu - lo-ndo-be eggwa-nga lya Ka - to-nda, a - ba-ntu ba Ka -
 tonda ab'o-bwe-bange. Mu A-b'o-bwe-bange, a-b'o-bwe-bange, a-b'o-bwe-bange ba-ntu ba Ka-to-nda ab'o -
 bwe-ba-nge. Mwa - ga-tti-bwa ne Kri - stu omu-so-so-ro-ti ne mu-sii-gi-bwa ne chris - ma n'a-ba-jju-la,
 Mwo-yo wa Ka-to-nda n'a-ba-tu-ku-za, mu - li ba-so-so-ro-ti ggwa - nga nna-mu-ki-sa ery'a-ba-lo-nde-mu.
 1. Ka - to-nda ya-ga-mba nti ggwe oli mwa-na wa-nge Kri - stu o-lwa lee-ro nku - za-dde, ndi-bee-ra Ki-taa -
 we n'a-ba mwa-na wa-nge, o-li ka-bo-na ow'o-lu-bee-re-ra. E-nnyu-mba ye be ba
 ffe tu-li baa-na, ka-si-ta tu-si-ga - la nga tu-nywe-dde mu ssuu-bi li-no eri-sa-nyu - sa.
 2. O-mu-li-mo gw'o-mu-so-so - ro-ti kwe ku-wee-re - za ebi-ra-bo, n'e-bi-ta-mpi - ro e-wa Ka-to-nda,
 e - bi-ta - mpi-ro ebyo-kye te - bya-mu-sa-nyu-sa Ggwe Ki-ta - nge. Nzuu-no nzi - ze, nzuu-no nzi -
 ze o - ku-ko-la ky'o-ya-ga-la. Nzuu-no nzi - ze nze Kri-stu o-mwa-na wo. E-nnyu-mba
 yo be ba ffe, tu-li baa-na, ka-si - ta tu-si-ga-la nga tu-nywe - dde mu ssuu-bi li - no eri-sa-nyu-sa.



3. Ka - ti ka-bo-na o-mu-ku-lu ow'o-ku-lee-ta ebi-ggya ya - tuu-ka dda, ya - yi-ngi-ra lu-mu mu ki-tu-ku -



vu ku lwa bo-nna. O-mu-saa-yi gwe ya-ta-mpi-ra, gwe gu-gwe dda-la. O-mu-saa-yi gwe Kri-stu



gwe ya-ta-mpi-ra, n'a-tu-fu-ni-ra enu-nu-za ey'o-lu-bee-re-ra. E - bi-tu-ndu be be ba



ffe, tu-li baa-na ka-si-ta tu-si-ga - la nga tu-nywe-dde mu ssuu-bi li-no eri-sa-nyu - sa.

SAASIRA (Missa Yeebazibwe)

Unison Moderato

Fr. James Kabuye

Saa - si - ra saa - si - ra saa - si - ra Mu-ka - ma omu-saa-si - zi Mu-ka - ma omu-saa-si - zi

Chorus

Saa - si - ra saa - si - ra saa - si - ra Mu-ka - ma omu - saa - si - zi

Kri - stu saa - si - ra Kri - stu saa - si - ra Kri - stu saa - si - ra

Chorus

mf Kri-stu saa - si - ra Kri-stu saa - si-ra Kri-stu saa - si - ra saa - si - ra *rit. f*

Unison Moderato

mf Saa - si - ra saa - si - ra saa - si - ra Mu-ka - ma omu-saa-si - zi Mu-ka - ma omu-saa-si - zi

Chorus

f Saa - si - ra saa - si - ra saa - si - ra Mu-ka - ma omu - saa - si - zi Mu - ka - ma saa - si - ra *rit. ff*

EKITIIBWA (Missa Yeebazibwe)

E - ki - tii - bwa e - ki - tii - bwa ki - be mu ggu - lu eri Ka - to - nda

Andante

f Chorus: N'e - mi - re - mbe n'e - mi - re - mbe n'e - mi - re - mbe gi - be ku nsi ku ban - tu Ddu - nda ba - ya - ga - dde atyo bo - nna *ff*

N'e - mi - re - mbe

1. Tu - ku - gu - lu - mi - za tu - ku - gu - lu - mi - za tu - ku - gu - lu - mi - za tu - ku - gu - lu - mi - za

tu - ku - gu - lu - mi - za tu - ku - gu - lu - mi - za tu - ku - wa eki -

f tu - ku - wa eki - tii - bwa tu - ku - si - nza byo - nna bye wa - ko - la nga bya ki - tii - bwa nga bya ki - tii - bwa we - ba - le Ddu - nda.

tii bwa tu - ku - si - nza byo - nna bya ki - tii - bwa nga bya ki - tii - bwa nnyo we - ba - le Ddu - nda.

ff

mf 2. A - yi Mu - ka - ma Ka - to - nda Ka - ba - ka owo mu ggu - lu Ka - to - nda³ Ki - ta - ffe

mf

o - mu - yi - nza wa byo - nna a - te - nde - re - ze - bwe a - te - nde - re - ze - bwe bu - li - jjo.

3. A - yi Mu - ka - ma gw'o - mwa - na a - zaa - li - bwa omu ye - kka Ye -

zu stu a - yi Mu - ka - ma gwe³ Ka - to - nda

a-yi Mu-ka-ma gw'A-ka-li-ga ggwe Aka-li - ga ggwe Aka-li-ga ka Ka-to-nda o -

Ggwe Aka-li-ga Ggwe Aka-li-ga

mwa-na wa Ki-ta - ffe a - te-nde-re-ze-bwe a - te-nde-re-ze-bwe bu-li - jjo.

4. Ggwe aggya - wo ebi - bi by'e - nsi ggwe aggya - wo ebi - bi by'e - nsi,

tu - saa - si - re tu - saa - si - re tu - saa - si - re.

Chorus 2

Saa - si - ra saa - si - ra saa - si - ra Mu - ka - ma.

5. Ggwe atu-dde, Ggwe atu-dde, Ggwe atu-dde ku gwa ddyo gwa Ki-ta - ffe tu-saa - si - re.

Ggwe atu - dde

6. Ku - ba, ku-ba, ku - ba Ggwe mu-tuu-ki-ri-vu we - kka Ggwe Mu-ka-ma we -

kka, Ggwe osu - kki - ri - dde we - kka Ye - zu Kri - stu.

7. Wa - mu wa-mu wa - mu ne Mwo-yo Mu - tuu - ki - ri - vu mu ki-tii-bwa kya Ki-ta - mii -

7. ffe A-mii-na A-mii - na A-mii - na. A-mii - na A-mii - na. A-mii - na A-mii - na. A-mii - na A-mii - na. A-mii - na A-mii - na. A-mii - na A-mii - na.

MUSITUKE TWANIRIZE EKIGAMBO

Fr. James Kabuye

Mu-si - tu - ke twa-ni-ri-ze eki-ga-mbo ky'O-mu-ka-ma. Mu-si - tu - ke twa-ni-ri-ze eki-ga-mbo

kye. Mu-si - tu kye. Ki - tuu-se, ki - tuu-se, e - ki-ga-mbo kye, ki -

tuu - se, ki - tuu - se e - ki - ga - mbo kye. Ki e - ki - ga - mbo kye.

E - ki - ga - mbo ky'o-bu-la-mu kii-ki-no ki-tuu-se, e - ki - ga - mbo ky'o-bu-la-mu kii-ki-no ki-tuu-se.

Mu mi-re-mbe egy'e-dda Taa - ta ya-yo-ge-ra-nga ng'a-yi-ta mu ba-lo-nze a - ba-la-nzi be.

Mu mi-re-mbe egya-ffe a - yo-ge-ra na-ffe, ng'a-yi-ta mu Ye-zu Kri - stu O-mwa-na we.

Wu-li-ra atu-ga-amba: "E-bi-ga-mbo bye nnga-amba, Taa-ta ye ya-bi-mpa, mu-bi-wu-li-re-nga."

Tu-kwa-ni-ri-zza, tu-kwa-ni-ri-zza Kri - stu Ki-ga-mbo Mwa-na. Tu-kwa-ni-ri-zza,

tu-kwa-ni-ri-zza Ki - ga-mbo wa Ka-to-nda. Yo-ge-ra na-ffe, yo-ge-ra na-ffe a -

nti eki - ga - mbo kyo bwe bu-la - mu, ge ma-zi - ma, bwe bu-la - mu.

JUBILEE YA ATAANO

allegro moderato Fr. James Kabuye

Ju - bi - lee, ju - bi - lee, ju - bi - lee etuu - se, ju - bi - lee, ju - bi - lee. Ju - bi - lee etuu -

f Ju-bi - lee etuu - se, ju-bi - lee e - tuu - se. *ff* Ju-bi - lee, ju-bi - etuu - se.

f se, ju-bi - lee etuu - se, ju-bi - lee etuu - se, ju-bi - lee etuu - se.

f se, ju-bi - lee etuu - se. Ju-bi - lee etuu - se. E - y'a-taa - no, e - tuu - se.

mf y'a-taa - no ataa - no. E - y'a-taa - no, E - y'a-taa - no, e - y'a-taa - no mya - ka ataa - e - mya - ka.

ff no. Ju-bi - lee, ju-bi - lee etuu - se. Ju-bi - lee, ju-bi - lee etuu - se, e - tuu - se.

f e - tuu - se, e - tuu - se, e - tuu - se ju-bi - lee etuu - se, ju-bi - *ff*
mf Yee, yee, yee, yee

lee etuu - se, ju-bi - lee etuu - se tu-ja-gu - ze, tu-ja-ga - nye, tu-ja-gu -
 tu-ja-gu - ze, tu-ja-ga - nye, tu-ja-gu -

ze. tu-ja-gu - ze, Tu-ja-ga - nye, twe-ba - ze Mu-ka - ma, twe-ba - ze Mu-ka - ma, twe-ba -

ze Mu-ka - ma, twe-ba - ze Mu-ka - ma a-tu - kuu - mye, a-tu - kuu - mye n'a-tu -

wa - ngaa - za ne tu-tuu-ka ku ki-ja-gu - zo, ki-ja-gu - zo, ju-bi - lee etuu - se.
 e - tuu - se.

MUYIMIRIRE TWANIRIZE

Fr James Kabuye

1. Mu-yi-mi-ri - re twa-ni-ri - ze Kri - stu omu-zi - ra wuu - no atuu-se mu ffe!
 Tu-kwa-ni - ri-zza, tu-kwa-ni - ri-zza, tu-kwa-ni - ri-zza Kri-stu Ggwe Ka-bo-na wa-ffe

al - le - lu - ja
 2 Mmwe mu-ki-ma - nye nti omu-ta- mbi - zi omu-ku - lu asoo - ka wuu - no atuu-se mu ffe.

Tu-kwa-ni - ri - zza, tu-kwa-ni - ri - zza, tu-kwa-ni - ri - zza Kri - stu Ggwe Ka-bo-na

wa - ffe. al - le - lu - ja
 3. Ffe bu - li - jjo y'a-tu-twa - la gy'a - li mu ggu - lu Taa - ta wuu-no

Tu-kwa-ni - ri - zza, tu-kwa-ni - ri - zza, tu-kwa-ni - ri - zza Kri - stu
 mu ffe.

Ggwe Ka-bo-na wa-ffe. al - le - lu - ia
 4. Tu - na-le-ma tu - tya, tu - na-le-ma tu - tya oku-wu-li - ra ama - ngu Kri -

Tu-kwa-ni - ri - zza, tu-kwa-ni - ri - zza, tu-kwa-ni -
 stu wuu - no mu ffe.

ri - zza Kri - stu Ggwe Ka-bo-na wa - ffe. Kri - stu tu - ku - kki -
Mu - saa - kaa - nye,

ri - zza, mu - saa - kaa - nye, Kri - stu tu - kwa - ni - ri - zza, ri - zza. Mu

ALLELUIA

ff Al - le - lu - ia, alle - lu - ia, alle - lu - ia, al - le - lu - ia, alle - lu - ia, alle -
ff al - le - lu - ia

lu - ia. Al - le - lu - ia, al - le - lu - ia, al - le - lu - ia.

1. Kri-stu Ki-ga-mbo wa Ka - to-nda a-tuu - se, a-lee-se ama-wu - li - re aga-sa-nyu-sa nti
2. Kri-stu Ki-ga-mbo wa Ka - to-nda a-tuu - se, a-zze n'e - ki - ga-mbo kye ki-ro-ko-la, tu -
al-le-lu-ia

ffe - nna tu - nu - nu - ddwa. Al - le - lu - ia, al - le - lu - ia, al - le - lu - ia.
fuu - ke baa - na babo - wo.

KATONDA WAFFE OYO NAMWEBAZA NTYA?

Fr James Kabuye

Ka - to - nda wa - ffe na - mwe - ba - za ntya? Ka - to - nda wa - ffe na - mwe - ba - za ntya?
oyo, oyo

na - mwe - ba - za ntya? na - mwe - ba - za ntya?

Ka - to - nda wa - ffe na - mwe - ba - za ntya olw'e - bi - ru - ngi enfaa - fa by'a - tu - wa - dde?
oyo

wa - dde? Nga twe - ya - nze! Ka - tu - mu - di - zze kw'e - byo by'a - tu - wa - dde

e - bi - vu - dde mu ku - te - ga - na okwa bu - li nkya. Sse - bo ow'e - ki - sa ebya - ffe bi - sii - me

a - nti bi - ra - ga omu - ti - ma ogu - sii - ma. ma o - gw'a - baa - na bo.

1. La-ba omu - gaa - ti, la-ba n'e - vvii - ni gye tu - lee - se; la-ba n'a - ma - ku -
 2. Tu - na - ku - wa ki, dda-la ky'o - sii - ma na - nnyi - ni nsi? La-ba n'o - bu - la -
 3. E - bi - ntu by'e - nsi, tu - bi - we Ddu - nda atwa - ga - la nnyo; tu - mu - we ebi - ba -
 4. Na - ku - ddi - za ki, dda-la eky'e - bbe - yi eki - ku - ggya - mu? Ki - no ky nso - bo -

la g'o - tu - wa - dde tu - ga - lee - ta.
 mu bw'o - tu - wa - dde tu - bu - lee - ta. To - bi - gaa - na, bi - to - no nnyo,
 la by'a - tu - wa - dde olw'e - ki - sa kyo.
 la kye nku - wa - dde ono - ki - twa - la.
 byo - nna bi - no

bi - ra - ga Ki - ta - ffe bwe - tu - sii - ma Taa - ta by'o - tu - wa - dde, we - ba - le - ge.

BYE BINO

Fr. James Kabuye

Bye bi - no e - bi - ra - bo byo Ddu - nda Lu - ga - ba Ddu - nda bi - twa - le
 Bye bi - no bi - sii - me

bye tu-lee - se ffe nga tu-ja-ga - nya ffe abaa-na bo Ddu - nda Ka-to - nda bi - sii - me

tu - na - ku - wa ki Ggwe eki - saa - na, mpo - zzi Ki - ta - ffe
ffe a - baa - vu mpo - zzi Taa -

1. ka-tu-lee - te evvii - ni gy'o-tu - wa ka-tu-lee - te omu - gaa - ti gw'o-tu - wa
esse - nte z'o - tu - wa ku mago - ba g'o - tu - wa

tu - bi - ga - tte - ko obu-la - mu obwa - ffe, by'e-bi - ra - bo bya - ffe ebya lee - ro.

1. ki - ri - na essa - nyu Ddu - nda mu maa-so go
2. tu - zze kwe - ba - za Ddu - nda ffe by'o-tu - wa
3. by'o-tu - wa Sse - bo bi - ngi o - twa - ga - la

1. E - ki - bii - na kyo - nna ssa - nyu Ddu - nda a - ma - ku - la
2. E - ki - bii - na kyo - nna kwe - ba - za Ddu - nda a - ma - ku - la
3. E - bi - ru - ngi byo - nna Sse - bo bi - ngi a - ma - ku - la

ga - la - ze essa - nyu Taa - ta ffe lye tu - li - na
 ku - ba ku - ddi - za Ddu - nda a - bi - te - ge - ka
 ku - ba kwe - ba - za Ddu - nda e - bi - to - ne byo

go tu - lee - ta ssa - nyu Taa - ta ffe lye tu - li - na
 ge tu - lee - ta ddi - za Ddu - nda a - bi - te - ge - ka
 ge tu - lee - ta ba - za Ddu - nda e - bi - to - ne - byo ffe

o - ku - ddi - za Ddu - nda bu - ga - nzi, Ka - to - nda wa - ffe ggwe osaa - na
 nna o - saa -

o - saa - na ku - te - ndwa Ddu - nda Lu - ga - ba asi - nga.
 na ku - te - ndwa Ddu - nda Lu - ga - ba asi - nga.

Tu - kwe - ba - za nnyo Ggwe Mu - ka - ma asii - ma ebya - ffe
 - za nnyo Ggwe Mu - ka - ma ali wa - no na - ffe
 - za nnyo Ggwe Mu - ka - ma aya - mba aba - na - ku
 - ga nnyo Ggwe Mu - ka - ma aso - bo - la ebi - ngi
 - ga nnyo Ggwe Mu - ka - ma abi - fu - ga ebi - ngi
 ki w'o - li Mu - ka - ma w'o - li na - ffe?
 ki w'o - li Mu - ka - ma w'o - li Ki - ta - ffe?
 ki w'o - li Mu - ka - ma Ddu - nda Ki - ta - ffe?
 Tu - kwe - ba -

Tu - kwe - ba -
 Tu - kwe - ba -
 Tu - kwe - si -
 Tu - kwe - si -
 Tu - na - ju - la
 Tu - na - ju - la
 Tu - na - ju - la
 Tu - na - ju - la

za nnyo, tu - kwe - ba - za nnyo Na - mu - ge - re - ka.

NNAAMUWA KI LUGABA?

Fr. James Kabuye

O - mu - ti - ma gwa - nge gu - ta eki - ga - mbo ekyo - gi, n' o - lu - yi - mba lwa - nge ndu - yi - mbi - ra Ka - to - nda.
 O - mu - ti - ma gwa - nge omu - yi - nza gu - mu - te - nda, n' o - lu - yi - mba lwa - nge ndu - yi - mbi - ra Ka - to - nda.
 O - lu - li - mi lwa - nge e - tte - ndo lu - li - wa oyo n' o - lu - yi - mba lwa - nge ndu - yi - mbi - ra Ka - to - nda.
 Ma - zi - ma Ka - to - nda Sse - bo oli wa ki - tii - bwa, n' o - lu - yi - mba lwa - nge ndu - yi - mbi - ra Ka - to - nda.

ki - tuu - fu lu - yi - mbi - ra Ka - to - nda, ki - tuu - fu lu - yi - mbi - ra Ka - to - nda.

O - mu - ti - ma gwa - nge n' o - lu - li - mi lwa - nge, ka bi - yi - mbi - re Omu - ka - ma atwa - ga - la oku - zaa - ma.

Nnaa - mu - wa ki? Lu - ga - ba nnaa - mu - wa ki? Nnaa - mu - wa ki? Lu - ga - ba atwa - ga - la oku - zaa - ma?

Ka tu - mu - ddi - ze, Lu - ga - ba, tu - mu - to - ne - re, Lu - ga - ba, ku bye tu - fu - na Lu - ga - ba Taa - ta bi - sii - me

O - mu - gaa - ti n' e - vvii - ni bii - byo bi - sii - me. Tu - lee - ta bii - byo bi - sii - me, tu -
 E - bi - me - ra ne sse - nte
 Ffe tu - ga - tta - ko obu - la - mu
 Ffe tu - ga - tta - ko emi - ti - ma



lee-ta, Taa-ta omu - lu-ngi bi-sii-me, bi - sii-me bye tu-lee-se. 1. Yee! Ka ndee - te Mu-ka-ma wa-nge e -
 2. Yee! Ka ndee - te Mu-ka-ma wa-nge e -
 3. Yee! Ka ndee - te Mu-ka-ma wa-nge mu -
 4. Yee! Ka ndee - te Mu-ka-ma wa-nge e -
 5. Yee! Ka ndee - te Mu-ka-ma wa-nge e -
 6. Yee! Ka ndee - te Mu-ka-ma wa-nge ma -
 7. Yee! Ka ndee - te Mu-ka-ma wa-nge e -
 8. Yee! Ka ndee - te Mu-ka-ma wa-nge bi -
 9. Yee! Ka ndee - te Mu-ka-ma wa-nge bu -



bii - bi - no bi - sii - me. Ggwe wa - ya - ga - la Sse - bo
 Taa - ta bi - sii - me.
 bi - ntu bye nni - mye mu nni - mi - ro.
 bi - ntu bye nfu - nye mu nni - mi - ro.
 gaa - ti gw'o - ku - lya ffe aba - ya - la.
 vvii - ni y'o - ku - nywa ne tu - baa - wo.
 by'o - ku - lya ebi - ru - ngi obu - la - la
 go - ba ge nfy - nye nga ntu - nda.
 sse - nte ze nfu - nye ge ma - go - ba.
 so - lo bye nni - na nga nnu - nda.
 la - mu bw'o - tu - wa ffe aba - ntu



mu mi-re-mbe eg'y'e-dda, ba-ku-to-ne-re ebi-ra-bo. Ggwe wa-la-gi-ra Sse-bo, tu-ku-to-ne-re ebi-ra-bo



e - bi-vu-dde mu ffe. gwe wa-la - gi-ra Sse-bo o - ku-ga - ba n'o-mu-ti-ma



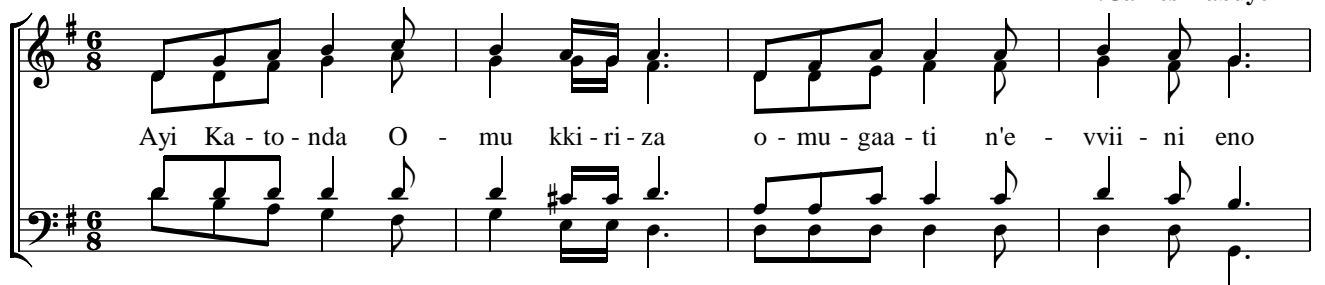
o - gu-sii-ma by'o-wa. Bi - sii-me, bi - sii-me, by'e-bi-ra-bo byo Sse-bo.
 Ka-to-nda, Ka-to-nda



Bi - sii-me, bi - sii-me ge ma-ku - la go, ge ma-ku - la go.
 Ka - to-nda, Ka - to-nda

68. AYI KATONDA OMU KKIRIZA

Fr. James Kabuye



Ayi Ka - to - nda O - mu kki - ri - za o - mu - gaa - ti n'e - vvii - ni eno

sii - ma bi - no ebi - ra - bo bya - ffe bii - byo ebi - va mu ba - ntu bo.

1. Tu - ku - wee - re - za e Mi - ssa eno, ffe nga tu - jju - ki -
 2. Tu - ku - wee - re - za e Mi - ssa eno, ffe nga tu - jju - ki -
 3. Tu - ku - wee - re - za e Mi - ssa eno, ffe - nna tu - wa - nja -

ra Ye - zu oyo bwe - ya - ta - mbi - rwa n'o - ku - zuu - ki - ra
 ra bw'o - ga - nza ffe - nna aba - ntu bo, ku - ba olw'a - ba - ntu
 ga gy'o - li eyo ffe tu - saa - si - re, twa - so - bya mu bi -

ng'a - vu - dde mu ntaa - na eyo, n'o - ku - li - nnya eyo gy'o - li Ggwe mu ggu - lu.
 wa - tee - sa a - fe Omwa - na, gwe wa - zaa - la Ye - zu oyo omu ati ye - kka.
 ngi Ddu - nda o - lw'e - kye - jo, Ggwe tu - we ennee - ma ey'o - ku - va mu nso - bi.

TUZZE KUKIIKA

Fr. James Kabuye

Chorus I
 Tu - zze, tu - zze o - ku - kii - ka ewa Sse - bo. Twe - ya -
 ga - no ma - ku - la go.

nze Ki-ta - ffe, twe - ya - nze
ga - no ma - ku - la go Sse - bo Ki - ta - ffe, ga - no ma - ku - la

go ga-no ma-ku-la
a. Tu - zze ffe a - baa-na aba mu-no b'o-bii - ta Ki - ta - ffe tuu - tu - no.
b. Tu - zze ffe oku-kya-la gy'o-su - la twe - ya - nze Ki - ta - ffe we - ba - le.
c. Twe - ya - nze oku - tu - yi - ta wa - no twe - ya - nze ebi - ru - ngi by'o - ko - la.
d. Tu - zze ffe ebi - ra - bo bii - bi - no tu - zze tu - bi - to - ne - re ggwe.
e. Twe - ya - nze Ki - ta - ffe twe - ya - nze twe - ya - nze bi - twa - le n'e - ssa - nyu.

Chorus II

Bi - no, ge ma - ku - la go ga - twa - le ge ma - ku - la go. Bi
bye bi - ra - bo byo bi - twa - le ge ma - ku - la go. Gu
gwe mu - gaa - ti gwa bo-nna gu - twa - le ge ma - ku - la go. E
e - no vvii - ni ya bula mu gi - twa - le ge ma - ku - la go.

Chorus III

Taa-ta bi-sii-me, Taa-ta bi - sii-me
bye tu - ku - wee-re-za, bye tu - ku - wee-re - za Sse-bo bi-sii-me.

Bii-bi-no bi-sii-me, na-ffe tu - sii-me Bye
bye tu - ku - wee-re-za, bye tu - ku - wee-re - za Sse-bo bi-sii-me.

tu - ko-la bi-sii-me, sse-nte zi - sii-me
bye tu - ku - wee-re-za, bye tu - ku - wee-re - za Sse-bo bi-sii-me.

Sii-ma Ki-ta - ffe, e - bya-ffe bi - sii-me
bye tu - ku - wee-re-za, bye tu - ku - wee-re - za Sse-bo bi-sii-me.

twe-ba-za Ki-ta - ffe, by'o-wa ebi - ru - ngi
bye tu - ku - wee-re-za, bye tu - ku - wee-re - za Sse-bo bi-sii-me.

Coda

ffe-nna ffe-nna twe-ya-nzi-za.
Twe-ya-nzi-za, twe-ya-nzi-za ama - ku-la go oga-sii-mye. twe-ya-nzi-za, twe-ya-nzi-za.

MUTUUKIRIVU (Missa Yeebazibwe)

Musical score for the first system. The vocal line (treble clef) begins with a *mf* dynamic and features lyrics: "Mu - tuu - ki-ri-vu Mu - tuu - ki-ri-vu Mu - tuu - ki-ri-vu Mu -". The piano accompaniment (bass clef) starts with a *mf* dynamic and includes the lyrics "Mu ka ma Mu tuu ki ri".

Musical score for the second system. The vocal line continues with lyrics: "tuu - ki-ri-vu Mu - tuu - ki-ri-vu Mu - tuu - ki-ri-vu Mu -". The piano accompaniment includes the lyrics "vu Mu - tuu - ki-ri-vu Mu-tuu-ki-ri -" and "Mu - tuu - ki - ri - vu Mu - tuu - ki -".

Musical score for the third system. The vocal line includes lyrics: "tuu - ki-ri-vu Mu - ka - ma Ka - to - nda w'a - ma - ggye." The piano accompaniment includes the lyrics "ri - vu". Dynamics include *rit.* and *ff*.

Musical score for the fourth system. The vocal line includes lyrics: "E - ki-tii-bwa kyo ki - jju-dde eggu-lu n'e-nsi e - ki-tii-bwa kyo ki - jju-dde eggu-lu n'e-nsi". The piano accompaniment includes the lyrics "a tempo" and *mf*. Dynamics include *mf* and *f*.

Musical score for the fifth system. The vocal line includes lyrics: "ki - jju - dde gg - lu n'e - nsi ki - jju - dde ki - jju - dde gg - lu n'e - nsi". The piano accompaniment includes the lyrics "gg - lu n'e - nsi" and *mf*.

f
Ho - sa - nna Ho - sa - nna Ho - sa - nna Ho -
Ho - sa - nna Ho - sa - nna Ho - sa -

sa - nna Ho - sa - nna Ho - sa - nna Ho - sa - nna Ho - sa - nna ya - tu - ko - la Ho - sa - nna
nna Ho - sa - nna Ho -

mf a - wa - nga - mye *f* Ho - sa - nna *rit. ff* wa - ggu - lu *Fine* e - yo

f O - yo a - jja o - yo a - jja o - yo a - jja o - yo a - jja o - yo a - jja mu li - nnya ly'O -
lively

mf Mu - ka - ma; a - gu - lu - mi - zi - bwe a - gu - lu - mi - zi - bwe bu - li - jjo. *D.S. al Fine*

GREAT AMEN

A - mii - na, a - mii - na, a - mii - na.

505. TULI KIMU MU KRISTU

Fr. James Kabuye

- | | | |
|--|--|--------------------|
| 1. E - ki - tyi - bwa kyo nki - ba - wa - dde, | ba - lyo - ke ba - bee - re ki - mu. | E - ki - tyi - bwa |
| 2. O - bu - yi - nza bwo mbu - ba - wa - dde, | ba - lyo - ke ba - nywe - re wa - mu. | O - bu - yi - nza |
| 3. E - bi - to - ne byo mbi - ba - wa - dde, | ba - lyo - ke ba - si - nze ki - mu. | E - bi - to - ne |
| 4. A - ba - ku - ma - nyi mba - la - gi - dde, | ba - nywe - re mu kwa - ga - la - na. | A - ba - ku - ma - |
| 5. Ka - ti kye nsa - ba ku - ba - kuu - ma, | ba - lyo - ke ba - la - ngi - ri - re. | Ka - ti kye nsa - |

kyo nki - ba - wa - dde	ba - sse ki - mu, Ki - ta - nge	ba - ya - mbe	ba - sse ki - mu nga
bwo mbu - ba - wa - dde	ba - sse ki - mu, Ki - ta - nge	ba - ya - mbe	ba - sse ki - mu nga
byo mbi - ba - wa - dde	ba - sse ki - mu, Ki - ta - nge	ba - ya - mbe	ba - sse ki - mu nga
nyi mba - la - gi - dde	ba - sse ki - mu, Ki - ta - nge	ba - ya - mbe	ba - sse ki - mu nga
ba ku - ba - kuu - ma	ng'o - ba - gu - mya, Ki - ta - nge	ba - ya - mbe	ng'o - ba - gu - mya Taa -

ffe. Ba - ya - mbe	ba - sse ki - mu, Ki - ta - nge	ba - ya - mbe	ba - sse ki - mu bo - nna.
ffe. Ba - ya - mbe	ba - sse ki - mu, Ki - ta - nge	ba - ya - mbe	ba - sse ki - mu bo - nna.
ffe. Ba - ya - mbe	ba - sse ki - mu, Ki - ta - nge	ba - ya - mbe	ba - sse ki - mu bo - nna.
ffe. Ba - ya - mbe	ba - sse ki - mu, Ki - ta - nge	ba - ya - mbe	ba - sse ki - mu bo - nna.
ta. Ba - ya - mbe	ng'o - ba - gu - mya, Ki - ta - nge	ba - ya - mbe	ng'o - ba - gu - mya bo - nna.

Tu - li ki - mu mu Kri - stu, tu - li ki - mu ffe - nna.

Tu - li ki - mu mu Kri - stu, tu - li ki - mu ffe - nna.

AKALIGA (Missa Yeebazibwe)

Unison

Largo

A - yi ggwe aka - li - ga a - yi ggwe aka - li - ga a - ka - ggya - wo ebi - bi by'e - nsi

rit p tu - saa - si - re *mf* tu - saa - si - re a - ka - li - ga *mf* tu -
poco mosso tu - saa - si - re saa - si - ra aka - li - ga tu - saa - si - re

saa - si - re a - ka - li - ga *mf* tu - saa - si - re tu - saa - si - re
 tu - saa - si - re aka - li - ga tu - saa - si - re tu - saa - si - re tu -

f tu - saa - si - re *f* ggwe aggya - wo ebi - bi by'e - nsi tu - saa - si - re
 saasi - re *a tempo Largo p* A - ka - li - ga ka Ka -

mf to - nda tu - saa - si - re aka - li - ga ka Ka - to - nda tu - saa - si - re aka - li - ga ka Ka -
mf *mf*

f Ggwe aggya - wo ebi - bi by'e - nsi *mf* tu - we emi - re - mbe mi - re - mbe.
 tonda *f* Ggwe aggya - wo ebi - bi by'e - nsi *mf* tu - we emi - re - mbe mi - re - mbe.

124. NZUUNO NKONKONA

Fr. James Kabuye

Nzuu - no ku mu - lya - ngo nko - nko - na, a - wu - li - ra eddo - boo - zi lya - nge
 Missa Y'ekijaguzo kya Fr. James Kabuye 2012 37

n'a-ggu-la - wo ndi - yi-ngi-ra ewu - we ne ndya eky'e-ki - ro nga tu -

tu - dde wa - mu, ne ndya ebya ssa - va nga tu - li ffe - mbi tu - tu - dde wa - mu.

1. Mpu-li - ra ayo-ge - ra nga Mu - ka - ma wa-nge, nsa-nyu - se na nnyo Ye -

2. Mu - ka - ma nku-ma - nyi bw'o - li ow'e-ki - tii-bwa, nsa-nyu - se na nnyo oku -

3. Mpu-li - ra ana-mu - sa nga Mu - ka - ma wa-nge, nsa-nyu - se na nnyo Ye -

zu lw'o - go - bye. Mpu - li - ra ayo-ge - ra nga Ggwe Mu - ka - ma
ntu - nuu - li - ra. Wee - ba - le oku - jja gye - ndi Mu - ka - ma
zu ankya - li - dde. Wee - ba - le oku - jja gye - ndi Mu - ka - ma

wa - nge
wa - nge, yi - ngi - ra jja - ngu Mu - ka - ma wa - nge, yi - ngi -
wa - nge

1.
ra jja - ngu nze nkwa - ga - la; 2.
tuu - la tu - bee - re wa - mu.

4. Mu - ka - ma so-nyu - wa a - nti nna-so-bya bi - ngi, nnee-ba - za lw'o - zze a -

nti osaa - si - ra. Mu - ka - ma nda - yi - ra na - nge oku - nywee - ra

ku Ggwe yi - ngi - ra jja - ngu Mu - ka - ma wa - nge, yi - ngi -

1.
ra jja - ngu nze nkwa - ga - la; 2.
tuu - la tu - bee - re wa - mu.

132. OTUMBIDDE WAGGULU EYO

Fr. James Kabuye

1. A - yi Mu - ka - ma a - te - nde - bwa Ki - ta - ffe ffe
 3. Ndi mu - sa - nyu - fu nga si - ri - na ku - daa - ga ga
 5. Mwo - yo Mu - ka - ma Mu - tu - ku - vu omu - te - ndwa ndwa

ggwe-
 W'o-
 Pa -

ggwe wa - tu - to - nda, ggwe aga - ba obu - la - mu
 W'o - li sii - ju - le, ggwe omu - lu - ngi bw'o - tyo
 Pa - tri ne Mwa - na mwe - nka - nye e - tte - ndo

wa - tu - to - nda obu - la - mu
 li si - ju - le
 tri ne Mwa - na

nga wa - yo - le - ka a - ma - nyi go omu - yi - nza
 Lwe nna - ku - yi - ta mu bi - zi - bu Ki - ta - nge
 Ggwe wa - bi - tu - wa ebi - to - ne byo mu bu - ngi

nga wa - yo - le - ka a - ma - nyi go mu - yi - nza Ddu-
 Lwe nna - ku - yi - ta mu bi - zi - bu Ki - ta - nge Wa-
 Ggwe wa - bi - tu - wa ebi - to - ne byo mu bu - ngi Wa-

Ddu - nda b'o - ga - nza ba - ku - te - nde nnyi - ni.
 Wa - jja n'o - nnya - mba ka - nku - te - nde Sse - bo.
 Wa - jja n'e - wa - ffe o - tuu - le ggwe mu - ffe.

nda b'o - ga - nza ba - ku - te - nde nnyi - ni.
 jja n'o - nnya - mba ka - nku - te - nde Sse - bo.
 jja n'e - wa - ffe o - tuu - le ggwe mu - ffe.

ff

O - tu - mbi - dde dda-la wa-ggu - lu eyo; mu bwa Ka to - nda bwo

ff

mu bwa Ka - to - nda bwo obu -

obu - ta - ggwa - wo. O - tu - mbi - dde dda-la wa - ggu - lu

obu - ta - ggwa - wo.

ta - ggwa - wo

eyo, mu - jje tu - mwe - ba - ze Ye - Mu - ka - ma wa - ffe.

mwe - ba - ze Ye Mu - ka ma wa - ffe.

2. Tu - ku - wa ette - ndo ffe - nna wa - mu mu nnyi - mba ffe - nna b'o - lyo - ye b'o - lyo - ye

4. A - yi Mu - ka - ma a - baa - na bo a - ba - lo - nde twe - ba - za Sse - bo Se - bo

2. Tu - ku - wa ette - ndo ffe - nna wa - mu mu nnyi - mba ffe nno b'o - lyo -

4. A - yi Mu - ka - ma a - baa - na bo aba - lo - nde Twe - ba - za Sse -

na bo - nna e - yo gy'o - li gy'o - li mu ggu - lu; bi - ku - yi - mba ggwe e - byo - ku

ggwe a - tu - ga - nza bw'o - tyo ng'a - tu - ga - nza. Nga wa - ya - mba ffe ne - tu - go -

ye na bo - nna eyo gy'o - li. Bi - ku - yi - mba ggwe e - by'o - ku -

bo ggwe atu - ga - nza bw'o - tyo. Nga wa - ya - mba ffe ne tu - go -

nsi e-bi-to - nde, a-nti ggwe ofu - ga ggwe ofu - ga bye wa-to- nda bye wa-to- nda enku - mu.
 ba si- taa - ni tu-yi - twa baa - na tu - yi - twa baa - na be-wa - lyo - wa sse - bo.

nsi ebi-to- nde a - nti ggwe ofu - ga bye wa - to - nda enku - mu.
 ba si-taa- ni Tu - yi - twa baa - na be-wa - lyo - wa sse - bo.

MUTENDE KATONDA

Fr. James Kabuye

Allegro

mu - te-nde mu - te-nde mmwe

Mu - te-nde mu - te-nde mmwe Mu-ka-ma Ka - to-nda te - nde te - nde

Mu-ka-ma Ka - to-nda to-nda Mu - te-nde-re-ze Omu-ka-ma, mu -

Mu mu - lu-ngi, mu - lu-ngi

te-nde-re-ze Omu-ka-ma mu - lu-ngi wa ki - sa nnyo mu-mu-yi-mbi -

ku - ba-nga mu - lu-ngi mu - lu-ngi wa ki - sa

re ku ndo - ngo mu-mu-yi-mbi - re ku ndo - ngo mu-mu-yi-mbi - re ku ndo -

mu-mu-yi-mbi - re mu-mu-yi-mbi - re ku ndo -

ngo ette-ndo li-mu - saa-ni-dde asaa-na, li-mu - saa-ni-dde ette-ndo li-mu -

ngo tte - ndo saa - na

saa - ni - dde asaa - na ku - ba - nga wa ki - sa nnyo. Mu - yi - mbe mu - yi - mbe mu -

saa - na wa ki - sa nnyo.

yi - mbe o - lwa Ka - to - nda wa - ffe; mu wa - ffe; mu - lu - ngi mu - lu - ngi mu -

nnyo nnyo mu -

lu - ngi wa ki - sa nnyo mu - lu - ngi mu - lu - ngi mu - lu - ngi wa ki - sa nnyo era

lu - ngi wa ki - sa nnyo nnyo nnyo mu - lu - ngi wa ki - sa nnyo era

ta - te - ra ku - su - ngu - wa - la. ta - te - ra ku - su - ngu - wa - la, ta - te - ra ku -

ta - te - ra ku - su - ngu - wa - la. ta - te - ra ku - su -

su - ngu - wa - la. a - zi - mba a - zi - mba a - zi - mba a -

ngu - wa - ya. O - mu - ka - ma azi - mba

zi - mba Ye - ru - za - le - mu, n'a - ku - ngaa - nya aba - ntu be aba - saa - saa -

nye. A - ba - me - nye - se abo emi - ti - ma, n'a - ba - si - ba e - bi - wu - ndu bya - bwe.

E - mu - nyee - nye zo - nna a - zi - ba - la a - zi - ba - la a - zi - ba - la oyo

n'a - zi - yi - ta n'a - ma - nnya bu - li emu. Mu - ka - ma Ka - to - nda Mu - ka - ma Ka - wa maa - nyi

to - nda Mu - ka - ma Ka - to - nda wa maa - nyi wa ntii - sa wa tte - ndo mu - wa tte - ndo

yi - nza ta - le - mwa mu - ku - lu nnyo. Mmwe mu - yi - mbi - re Omu - ka - ma nga mu - mwe - ba - za ku

nna-nga, ku nto-ngoo-li nna-nga ku nna-nga nna-nga nto-ngoo-li nto-ngoo-li

nto-ngoo-li nto-ngoo-li

eyo. Mu-mu-yi-mpi-re ku nna-nga ku nna-nga ku

nto-ngoo-li nto-ngoo-li mu-mu-yi-mpi-re ku nna-nga ku nna - nga nna-nga ku

nto-ngoo-li nga mu-mwe-ba - za. A - bi-kka eggu - lu n'e-bi-re n'a-bi-to-nye -

nto-ngoo-li nga mu-mwe-ba - za. A - bi-kka eggu - lu n'e-bi-re n'a-bi-to-nye -

sa, a - te-ge-ka enku - ba etta-ka n'a-li-gi-mu - sa; a - me-za mu nso - zi omu-ddo

sa, a - te-ge-ka enku - ba etta-ka n'a-li-gi-mu - sa; a - me-za mu nso - zi omu-ddo

n'e - bi - me - ra e - bi - ya - mba omu - ntu. A - gu - lu - mi - zi - bwe, a -

n'e - bi - me - ra e - bi - ya - mba omu - ntu. A - gu - lu - mi - zi - bwe, a -

gu - lu - mi - zi - bwe, a - gu - lu - mi - zi - bwe, a - gu - lu - mi - zi -

gu - lu - mi - zi - bwe, a - gu - lu - mi - zi - bwe, a - gu - lu - mi - zi -

f rit. *ff*

bwe, e - mi - re - mbe n'e - mi - re - mbe gyo - nna.

f *ff*

e - mi - re - mbe n'e - mi - re - mbe n'e - mi - re - mbe gyo - nna.

378. NJAGALA NZE

Fr. James Kabuye

Nja-ga-la nze, nja-ga - la ki-mu nze, o-ku-bee-ra mu nnyu-mba y'O-mu-ka - ma e-mi - re-mbe,

e-mi-re - mbe, e-mi - re-mbe. Mpu-li - re obu-woo-mi bw'O-mu-ka - ma, nne-ro-le - re, nne-ro-le -

re eki-ggwa kye. nne-ro-le - re, nne-ro-le - re eki-ggwa kye
mu wee-ma yo entu-ku - vu, mu wee-ma ye

mu wee-ma yo entu-ku - vu, nku - ta-mbi-ri - re ebi-ta-mbi-ro eby'o-ku-ja-gu - za. N'e-nto - ngooli

e-ku-vu-gi - re Mu-ka-ma wa-nge, nja ku-yi - mba. Nja ku-yi - mba obu-ta-ma - la, nja ku-yi -

nja ku - yi-mba, nja ku-yi - mba, nja ku - yi-mba ggwe Mu-ka-ma wa - nge. O-mu-ti-ma

mba
gwa-nge gu-ku-ga - mba; a-maa-so ga-nge ga-ku-noo - nya. A-yi Mu-ka - ma noo - nya a-maa-so

go. To-nkwe - ka maa-so go nze Omu-ddu wo to-ngo-ba-ga - nya, to-nja-bu-li - ra.

DC. Fine
Ba -
A-ba-bi bwe ba-nnu - mba aba-la-be ba-nge, a-ba-bi bwe ba-nnu - mba oku-nzi - ta.

wa-na - ttu - ka ne ba - gwa, ne ba - gwa, ba - wa-na - ttu - ka ne ba - gwa. E - ggye bwe
 li - nnu - mba oku-nzi - ta, e - ggye bwe li - nnu - mba oku-nzi - ta. Ba - wa-na - ttu -
 ka ne ba - gwa, ne ba - gwa ba - wa-na - ttu - ka ne ba - gwa. Ggwe bu-lo-ko - fu bwa -
 nge, a - yi Mu-ka-ma, Ggwe ki-go eki - nywe-vu eky'o-bu-la - mu bwa - nge, naa -
 tya ki? Naa - tya ki? A - ni ate gwe naa - tya? Ne bwe nja-bu - li -
 ra taa - ta ne maa - ma ka - si - ta Omu-ka - ma anu -
 ra tte, ta-nja-bu - li - ra, a - mpa-ngu - za. To-nja-bu - li - ra a - yi Mu - ka -
 ma, to - nsu - la a - yi Mu - ka - ma, ni - ndi - ri - ra Omu - ka - ma ali - jja, nzi - ki - ri -
 za ate nga ndi - ra - ba ebi - ru - ngi by'O - mu - ka - ma mu nsi y'a - ba - la - mu.

NKUGULUMIZA NZE NTENDA

Fr. James Kabuye

Nku - gu - lu - mi - za nze nte - nda, a - yi Mu - ka - ma wa - nge atuu - se;
 nku - gu - lu - mi - za nze nsi - nza, Ye - zu Mu - ka - ma wa - nge akya - dde.



O - li wa ki-sa Ggwe atwe - wa, a - yi Mu-ka-ma wa-ffe ozze otya?



Na-ku-ga-mba ki? Na-yo-ge-ra ki? Mu-ka-ma mu-lu-ngi mu-ga - bi nnyo, yee, mu-ga -



bi nnyo, mu-ga - bi nnyo. mu-ga-bi nnyo, mu-ga-bi nnyo, yee,

O-tu - ga - bu - la n'O-mu-bi-ri gwo.
O-tu-nywe-sa n'O-mu-saa - yi gwo.
O-tu - tu - ku - za aba-kwe - si - ga.
O-tu - fuu - la na ba - ga - nzi bo.



a - tu-ga-bu-la ng'a-twe - wa, mu-ga-bi nnyo, a - tu-ga-bu-la ffe abaa - vu n'o-tu-nywe-sa,



o - tu-lii-sa, o - tu-nywe-sa ffe-nna we-ba-le Ki - ta-ffe Ddu-nda ng'o-ga - bu-dde, ng'o-ga -



bu - dde. Mu - zi-ra - ki - sa a - nzaa - la, gwe - nzi-ri - nga - na a - mbe - dde o - w'o - bu -



yi-nza Mu-ka-ma wa-nge, na-ku-yi-mba-ko Mu-ka-ma wa-nge o - li mwe-si -
o-ndii-sa, o-ndii-sa,



gwa wa nsu-ssu, a - ba-kwe-si - ga gwe oba-ju-na; a - ba-ta - li-na ke ba-lya - ko na-bo oba-ya-mba,



ba-lya ku mu-gaa-ti gw'o-ga - ba ne ba-ku-tta nnyo, ne ba-ku-tta nnyo. O - su-mu-lu-la aba-si-be



o-ya-mba abe-go-se, ne ba-mu-zi-be ne ba - la - ba, n'a-ba-la - ma - zi, n'a-ba-la - ma -



zi ggwe n'o-ba-tuu-sa o - ya-mba ba-nna-mwa-ndu enfuu - zi n'o-zi-ya-mba, e - kku-bo ly'a-ba-bi oli-ta-bu -

la. Mu-ka-ma wa - nge^o. Ne-ya-nza Mu-ka-ma Ye - zu, o - li wa ki - sa, ne - ya-nza ebi - ru - ngi
o - saa - si - ra ggwe. eki - ngi, nko-woo - la aba - to - nde
o - ya - mba abaa - vu. gy'o - li, Twe-wuu-nya oku-kya - za
Ye - zu, Twe-wuu-nya eki - sa kyo

o - li wa ki - sa. sa. O - li wa ki - sa, o - li wa ki - sa kya nja - wu -
enfaa - fa. Ne - ya - nza eki - sa kyo
aba - ngi. Nko-woo - la aba - li eyo
Ye - zu. Saa - kaa - nya omu - yi - nza
ki - ngi.

lo Mu-ka-ma wa-nge o - li wa ki - sa, bee-sii - mye ggwe aba-ku-noo-nya. O - li wa ki - sa kya nja - wu -

lo Mu-ka-ma wa-nge, e - nsi eno kye-ra-ga, bee-sii - mye ggwe aba-ku-noo-nya. a - ba - ku - noo - nya.

a - ba - ku - te - nda, a - ba - ku - noo - nya Ddu - nda oba - wa - ngu - za, o - ba - wa - ngu - za.

135. TE DEUM, GGWE KATONDA TUKUGULUMIZA

Fr. James Kabuye

Ggwe Ka - to - nda, tu - ku - gu - lu - mi - za. Ggwe

Mu - ka - ma tu - ku - te - nde - re - za.
nde - re - za

Recitativo

1. Ggwe Ka - to - nda tu - ku - gu - lu - mi - za; Ggwe Omu - ka - ma tu - ku - te - nde - re - za

1. Ggwe Pa - tri ata - li - ko ku - soo - ka, e - nsi yo - nna eku - te - nde - re - za.

ANGELIC ACCLAMATION

arrang. J. K. Makubuya

Cantabile

Mu - tuu - ki - ri - vu Mu - tuu - ki - ri -
O - mu - ka - ma Ka - to - nda O - mu - ka - ma Ka - to - nda

vu, Mu - tuu - ki - ri - vu, Mu - tuu - ki - ri - vu Mu - tuu - ki - ri - vu.
O - mu - ka - ma Ka - to - nda Mu - tuu - ki - ri - vu.

bi - jju - dde bi - jju -
O - bu - ku - lu n'e - ki - tii - bwa, o - bu - ku - lu n'e - ki - tii - bwa

dde bi - jju - dde bi - jju - dde ensi n'e - ggu - lu.

o - bu - ku - lu n'e - ki - tii - bwa

2. Ggwe gwe batendereza Bamalayika bonna, N'eggulu n'amaanyi gonna we gafa genkana
Ne Bakerebimu ne Basserafimu, bakowoola obutassa nga bakuyimbira.

3. Mutuukirivu Mutuukirivu, Omukama Katonda ow'obuyinza,
Bijjudde ensi n'eggulu obukulu bw'ekitiibwa kye ekyo.

4. Ekibinja ky'abatume eky'ekitiibwa, n'abalanzi ab'ettendo bakutendereza,
Egye ly'abajulizi eritemagana ennyo, Likutendereza.

5. Mu nkulungo y'ensi yonna w'efa ekoma, Eklezia Omutukuvu.
Ggwe Patri ow'obukulu obutagereka akutendereza.

6. Wamu n'Omwana wo omu Omutiibwa, gwe wazaala yekka oyo,
Wamu ne Mwoyo Mutuukirivu omukubagiza akutendereza.

7. Ggwe Yezu Kristu Kabaka ow'ekitiibwa oli Mwana wa Patri ataliiko kusooka,
Bwe wateesa okulokola omuntu wagaana okwenyinyala enda y'omubiikira.

8. Ggwe wawangula olumbe, n'oggulira abakukkiriza obwakabaka bw'eggulu.
Ggwe atudde ku gwa ddyo ogwa Katonda mu kitiibwa kya Kitaawo oyo, ffenna tukkiriza ng'olijja okutulamula.

9. Tukwegayiridde nno abaddu bo bajune, be wanunuza omusaayi gwo nno ogw'omuwendo,
Bawe okumenyerwa mu batuukirivu, mu kitiibwa ekitaliggwaawo.

10. Ayi Mukama abantu bo balokole, ezzadde lyo liwe omukisa.
Balunngameye, badduukirire, okutuusa ensi lw'eriggwaawo.

11. Buli kanaku tunaakutenderezanga, ne tugulumiza erinnya lyo ennaku zonna,
Emirembe n'emirembe, kkiriza ayi Mukama olunaku lwaleero luno, okutukuuma nga situkoze kibi.

YOU ARE A PRIEST FOR EVER

allegro moderato *f* Fr. James Kabuye

You are a priest for e - ver, for e - ver, a
for e-ver, for e - ver, for e-ver, for e-ver

You are a priest for e - ver, you are a priest for e - ver a priest, a

priest for e - ver, a priest for e - ver, for e - ver and e - ver, for e - ver and e - ver, for
 priest for e-ver, a priest for e-ver, e - ver and e - ver, for e - ver and e - ver, for
 e - ver ac-cord-ing to the or - der, to the or - der to the or - der the or - der
 to the or - der, the or - der
 or - der of Mel-chi - se - dech of Mel- chi - se-dech the Lord has sworn, the Lord has
 the Lord has sworn
 sworn, the Lord has sworn, the Lord has sworn an oath and He
 the Lord has sworn has sworn, the Lord has sworn, has sworn an oath and He
 will not change, you are a priest for e - ver.
 will not change, you a priest for e - ver.
 1. I have found Da - vid my ser - vant, I have found Da - vid my ser -
 I have found I have found I have found my ser -

vant I have a - noin - ted him with ho - ly oils
 vant, I have a - noin - ted him with my ho - ly oils,

my hand will be on him, to streng-then, to streng-then him ev'-ry day.
 my hand will be on him to streng-then, to streng-then

ff
 2. My faith-ful-ness, my faith-ful-ness, my faith-ful-ness and my love will be with him,
ff my

be with him, my faith-ful-ness and love will be with him, will be on him, in my
mf
 faith-ful-ness and love and my

name in my name his po-wer will in-crease, po-wer will in-crease in my name.
f in my name, in my name
rit. ff
mf po-wer will in-crease, will in - crease, will in-crease in my name.

KASOOKA NZAALIBWA

Fr. James Kabuye

Ka - soo-ka nzaa-li - bwa Mu-ka-ma wa- nge nda-yi-dde, ka - soo-ka nzaa-li-bwa Mu-ka-ma

wa-nge, ka-soo-ka nzaa-li - bwa Mu-ka-ma wa-nge, ka - soo-ka nzaa-li-bwa nywe-re-dde ku Ggwe Mu-ka -

ma, mu-ya-mpi wa-nge; wa-nya-mba, wa-nkuu-ma, wa-nda-bi-ri-ra to-nsu-li-ri-ra Mu-ka-ma

wa-nge o-mpa-ni - ri - ra, ndi-ro-jja amaa-nyi go oli wa bu - yi-nza osaa-na kwa-ga-la.

A-ba-la-be ba-nge ba-njo-ge-ra-ko obu-bi nku - ga-mbye ba-nni-mi-sa, ba-nne-ko-be-ra nnyi-ni ba -

duu-la wu-li-ra: Ddu - nda amwa-bu - li-dde, tu-mu-wonde-re tu-mu-kwa - te amwa-bu - li-dde a -

na-mu-taa-sa lee-ro ava wa? mwa-bu - li-dde, mwa-bu - li-dde a - va wa? ana-mu-taa-sa ana-va wa?

mwa-bu-li-dde Ye Ggwe, Ggwe nni - nda Mu-ka-ma wa-nge, Ggwe Ggwe nni -

nda Mu-ka-ma wa-nge Ggwe ki-go eki-nywee-vu, Ggwe ki-ddu-ki-ro kya-nge Ggwe lwa-zi lwa-nge ndoko -

la, ndo-ko - la; nsi - ka mu mi-ko-no gy'o-mu-bi oyo anyi-gi - ri - za Nzuu-no Sse-bo,

nzuu-no Sse-bo ba - swaa-le aba-ka-ta-gga. Ya-ngu-wa o - ku-nnya-mba ng'o-mpa-ni - ri - ra.

Jja - ngu abo-na-bo-na eri nze a-ku-lu-mi-rwa, mu U-ka-ri-sti - a mwe-mbee-ra

Ndi - yi-мба, ndi - te-nda, ndi - ro-mbo-jja o-bu-yi-nza bw'O-mu-ka-ma mwa-ga-la. Ndi-te-nda ne nnyu -

mya obu-tuu-fu bwo we-kka Mu-ka-ma bu-su-ffu. Wa-nji-gi - ri - za oku-va obu - to bwa-nge, na gu-no

DC.

gwa-ka ndo-jja ebi-kuu-no byo a - nti to -nja -bu - li - ra, o - li wa ki - sa.

A - yi Ka-to-nda ndi-ku-gu - lu-mi-za ku nto-ngoo-li, ndi-ku-yi-mpi-ra ku nna - nga Sse-bo omu-tii bwa.

Gi-ri - ja - ga - nya emi-mwa bwe ndi-ba nku-yi-mba. ndi-ba nku-te-nda, n'o-lu - li - mi lwa-nge bu-li -

jja lu-na-ku-te-nda. A - ba-nja-ga-li-za obu-bi oba - swa-za, a-ba-mbo-nya-bo - nya, na-bo ba-swa-dde. A

Na - ye nze ndo - ko - la, ndo - ko - la, ndo - ko - la. ndo - ko - la, ndo - ko - la.