

MISSA TUKUTENDA

SAASIRA

Fr. James Kabuye



1. Ye - zu Kri - stu a - tu - zuu - ki - za mu bu - la - mu obu - ggya.



A - yi Mu-ka-ma Ka-to-nda, Ggwe omu-saa-si-zi Mu-ka - ma tu-saa-si-re.



2. Ye - zu Kri - stu a - tu - so - nyi - wa e - bi - bi bya - ffe.



A - yi Kri - stu omu - saa - si - zi, Ggwe omu - saa - si - zi Kri - stu tu-saa - si-re.



1. Ye - zu Kri - stu a - tu - lii - sa n'O - mu - bi - ri gwo, n'O - mu - saa - yi gwo.



A-yi Mu-ka-ma Ka-to-nda, Ggwe omu-saa-si-zi, Ggwe omu-saa-si-zi, Ggwe omu-saa-si-zi Ddu-nda tu-saa-si-re.

EKITIIBWA



E - ki-tii-bwa kyo-nna ki - be eyo mu ggu-lu eyo, n'e-mi-re-mbe ku nsi ku ba-ntu b'a-ya-ga-dde atyo.



1. Tu-ku-te-nda Ddu-nda, tu - ku-gu-lu-mi-za; tu-ku-wa eki-tii-bwa wa - ko-la bye ki-tii-bwa we-ba - le, we-ba-le nnyo.



2. A-yi Mu-ka-ma Ddu - nda Ka-ba-ka wa-ffe, Ka-ba-ka owo-mu ggu-lu Ki - ta-ffe ow'o-bu-yi-nza.



3. A-yi Mu-ka-ma Ggwe Omwa - na Ka-to-nda wa-ffe a - zaa-li-bwa omu ye-kka Ye - zu Kri-stu.



4. A - yi Mu-ka-ma Ggwe Aka-li - ga a-ka Ka-to-nda O - mwa-na wa Ki-ta-ffe tu - ku-gu-lu-mi-za.



5. Ggwe aggya-wo ebi-bi by'e-nsi ffe tu-saa-si-re. Ggwe aggya-wo ebi-bi by'e-nsi wu-li-ra aba-daa-ga.



6. Ku ddyo gwa Ki-taa-wo ffe tu-saa-si-re. E - yo Omwa-na gy'a-tu-dde, wu-li-ra aba-daa-ga.



We-kka Ggwe mu-tuu-ki-ri-vu, ffe tu-saa-si-re; Ggwe Mu-ka-ma we-kka wu-li-ra aba-daa-ga.



7. We-kka o-ssu-ku-lu-mye mu ki-tii-bwa gy'o-li Ye-zu Kri-stu osaa-na o-fu-ne eki-tii-bwa wa-mu ne Mwo-yo,



wa-mu ne Mwo-yo Mu - tuu-ki-ri-vu, mu ki-tii-bwa kya Ki-ta-ffe mu ggu-lu, A-mii-na.

MUTUUKIRIVU



Mu - tuu-ki-ri - vu, mu - tuu-ki-ri - vu, mu - tuu - ki - ri - vu, Mu-ka-ma Ka - to-nda w'a-ma -
Mu-ka-ma Ka - to-nda, Mu-ka-ma Ka - to-nda



ggye. Mu ggye. E-ki-tii-bwa kyo, e-ki-tii-bwa kyo ki - jju-dde eggu-lu n'e - nsi.



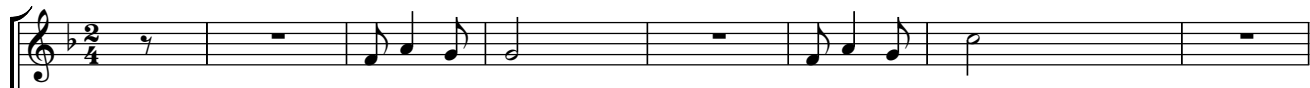
Ho - sa - nna, ho - sa - nna, ho - sa - nna wa-ggu-lu eyo.





O-yo ajja, o-yo ajja mu li-nnya ly'O-mu-ka - ma a - te-nde-re-ze - bwe, a - te-nde-re-ze - bwe.

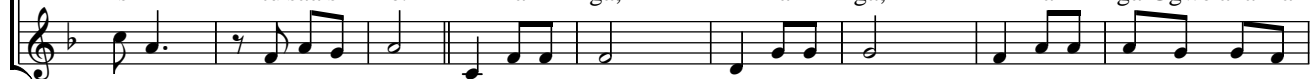
KALIGA KA KATONDA



tu-saa-si - re, tu-saa-si - re
Ka-li - ga ka Ka - to - nda, Ka-li - ga ka Ka - to - nda Ggwe aggya-wo ebi - bi by'e -



DC.
tu - saa-si - re, tu-sa - si - re, tu-saa-si - re
nsi tu-saa-si - re. A - ka-li - ga, A - ka-li - ga, A - ka-li - ga Ggwe aka Ka -



tu-saa-si - re Ggwe aggya-wo, Ggwe aggya-wo, Ggwe aggya-wo e - by'e-nsi
to - nda Ggwe aggya-wo ebi - bi Ggwe aggya-wo ebi - bi by'e - nsi



tu-we emi - re - mbe, mi - re-mbe, tu-we emi - re - mbe.
tu-we emi - re - mbe tu-we emi - re-mbe, tu-we emi - re-mbe.

