

# ORATORIO: MESSIYA OMULINDIBWA

Ekitundu Ekisooka

Eddoboozi Ly'Omukama Lyawulikika

Tenor solo



E-ddo-boo-zi ly'O-mu-ka-ma lya-wu-li - ki-ka e - nsi eno n'e-sa-maa-li-ri-ra, n'e-ka-nka-na,



ne-wu-nii-ki-ri-ra; mu maa-nyi ge n'a - ga-mba nti: Gu - mya aba-ntu ba-nge ba-gu - mye. Gu -



mya aba-ntu ba-nge ba-gu - mye. Wuu - no Omu-ka-ma Ka-to-nda wuu - no ajja, wuu - no Omu-ka-ma Ka-to-nda



a - jja n'o-bu-yi - nza, o - mu-ko-no gwe byo-nna gwe gu-bi - fu-ga; n'e-mpee-ra y'o-bu-wa-ngu -



nzi emu-li mu gwa ddyo. E - be-nde-ra z'o-bu-wa-ngu-zi zo - nna zi-mu-ku-le-mbe-ra.



A - li-nga omu-su - mba a - lii - sa e - ndi-ga ze, o-bu-to obu-li-ga a - bu-ku-tte mu mi-ko-no



gye, n'a-bu-tee-ka ku ki-fu-ba kye. E - zi-bu-ze n'a-zi-wo-nde - ra, n'a-zi-wo-nde - ra gye zi-ra-ze.



Mu - wee-re ba-ntu ba-nge mu - wee-re, mu - wee-re ba-ntu ba-nge mu - wee-re. mu - wee-re.



O - bu-lo-ko-fu bwa-mmwe bu-jja ma-ngu, o - bu-lo-ko-fu bwa-mmwe bu-jja ma-ngu ssi bwa ku -



lwa; mu-fii - ra ki enna-ku? A - ba - nge mu-ba-dde ki? Mu-si-nda ki enna-ku,

nze ntuu-se ana-ba-lo-ko - la, mu-le-me ku - tya, ntuu-se Ka-to-nda wa-mmwe, mu-le-me ku -  
 tya, nze Ka-to-nda wa-mmwe, o-mu-tu-ku - vu wa I-sra-e - li, o-mu-nu-nu-zi wa-mmwe ntuu-se.

### Jerusalemu Sagambiza

#### Chorus I

Je-ru-sa-le-mu sa-ga-mpi - za, su-gu-mpi-za, yo-ga-yo - ga. Ya-mbu-la-mu, ya-mbu-la-mu  
 e-ngo-ye ezi-ku-ngu-ba-ga; Je-ru-sa-le-mu ya-mba-la bu-lu-ngi e - zi-ne-ka-ne-ka  
 ya-mba-la obu-lu-ngi o - bw'e-ki-tyi-bwa kya Ddu-nda e-nna-ku zo-nna, we - bi-kki-ri-re we -  
 bi-kki-ri-re we-nna o-mu-na-gi-ro, o-mu-na-gi-ro, o - gw'o-bu-lu-ngi bwa Ka-to-nda  
 wo. We - ti-kki-re, we - ti-kki-re engu-le e - y'e-ki-tyi-bwa ky'o-li a - li wa-ggu-lu dda-la  
 a - ta-ggwa-wo emi-re-mbe gyo-nna. We - ti-kki-re engu-le e - wa-Ka-to-nda wa-ffe, we -  
 ti-kki-re engu-le, we - ti-kki-re engu-le. Wuu-no Ka-to-nda a - ge-nda okwo-le-ka eki-tyi-bwa  
 kye, mu ma-wa-nga go-nna, wa-nsi w'e-ggu - lu. E - ri-nnya lya-ku-tuu-mye ye ggwe "Dde-mbe" lyo -  
 nna eri-tuu-ki-ri-dde; ggwe ki-tyi-bwa kye o-lw'o-bu-ju-mpi-zi ggwe bw'o-li-na. Si-tu -

ka, si-tu-ka ba-mbi Je-ru-sa-le-mu. Yi-mi-ri-ra ku bu - tu-nnu-mba, za amaa-so go

e-bu-va-nju-ba era n'e-bu-gwa-nju-ba; a - baa-na bo ba-ku-ngaa-nye, la-ba ba-jja gy'o-li. Ba-ku-mba, ba -

ku-mba, ba-la-be ba - ku-mba o - li o-mu - tuu-ki-ri-vu ya-ba-ga-mbye oku-jja. Ka - to-nda abaa-ki-dde, bo -

nna bas-sa-nyu-fu, la - ba ba-ta-mbu-za ebi-ge-re ng'a-ba-la - be ba-bwe ba - ba-ku-le-mbe-ra. Wuu -

no Ka-to-nda wa-ffe a - ba-ko-mya-wo. Ddu - nda aba-ko-mya-wo nga ba-li - nga aba-la - gi-ra,

mu ki-tyi-bwa eki-ta - ga - mbi - ka. Ka - to-nda ala-ngi-ri - dde; Bu - li lu - so-zi olu-wa-nvu

lwo-nna lu-see-tee-re. O-bu-so-zi n'e-bi-wo-nvu byo-nna bi - se-ndwe, bi-jju-zi-bwe,

e-nsi e-fuu-ke mu-see - twe. I - sra - e - li a-lyo - ke ata-mbu-le mu dde - mbe nga Ka-to-nda

ky'e-ki-tyi-bwa kye, ky'e-ki-tyi-bwa kye. E - bi-bi-ra n'e-mi-ti e - gy'a-ka-loo-sa gyo-nna

gi-ri-fuu-ka bi-ttu-lu - ze ebya I-sra-e - li mwa-li-bee-ra, Mu-ka-ma Ka-to-nda ya-la-yi-dde bw'a-tyo.

Ku-ba Ka - to-nda ala-mbi-ka, Ka - to-nda ala-mbi-ka I - sra - e - li mu ssa-nyu ezzi-bu,

n'a-mu-wa eki-ta-ngaa-la eky'e-ki-tyi-bwa kye, e - ki-sa kye n'o-bu-tuu-fu bwe nga bi-wo-nde - ra.

**Ekirango (Recitative)**

Mu - ka-ma w'a-ma - ggye n'a-yo-ge - ra nti nno: Mu bba-nga tto - no, mu bba-nga tto -

no nja ku-nyee - nya nze eggu-lu n'e - nsi, nja ku-nyee - nya nze eggu-lu n'e - nsi. Nja ku -

nyee-nya, nja ku - nyee-nya, nja ku - nyee-nya eggu-lu n'e - nsi nja ku - nyee-nya e-nnya -

nja n'e-tta-ka ekka - lu. Nja ku-nyee - nya e-ggu-lu lyo-nna mu - li-ndwa w'a-ma - wa-nga

a - tuu - ke, mu - li-ndwa w'a-ma - wa-nga a - lyo-ke ajje. Mu-ka - ma gwe mu - li - ndi-ri -

ra a - jja ku - jja, a - jja ku - jja mba-gi - ra - wo wa - no mu ki - ggwa

A - jja ku - jja, a - jja ku - jja o - mu-ba - ka ow'e-nda - gaa - no gwe mu-li -

nda a - jja ku - jja. Mu-ka-ma Ka - to-nda w'a-ma - ggye y'a - ga - mbye.

**Akalowoozo (Aria)**

A - naa-gu-mi - ra oku-jja kwe y'a - ni? Y'a - ni? A - na-yi-mi-ri - ra ng'a -

zze y'a - li - wa? A - naa-gu-mi - ra oku-jja kwe y'a - ni? A - li -

nga omu-li - ro ogu - saa-nuu - la ebyu - ma a - na-gu-gu-mi - ra y'a - ni? A - na-gu-gu-mi -  
 ra y'a - ni? A - jja ku-tu-ku - za abaa-na ba Le - vi, a - jja ku-tu-ku - za abaa-na  
 ba Le - vi ba-so-bo - le oku-wee-re - za Omu-ka - ma e - ki-ta-mbi - ro eky'o-bu-tuu - fu.

**ALUWA**

A-lu - wa, a-lu-wa, a-lu - wa ggwe? A-lu - wa, a-lu-wa, a-lu - wa ggwe a - la-ngi-ri -  
 ra ama-wu-li-re a-ga - woo-ma! A-ma-wu-li-re eri Si-o - ni a-ga-woo-ma, a-ga-woo-ma e -  
 ra aga-sa-nyu-sa. Yi-mi-ri-ra, yi-mi-ri-ra, yi-mi-ri-ra ku nti-kko z'e-nso-zi ola-ngi-ri -  
 re ama-wu-li-re aga-sa-nyu - sa; si - tu-la eddo - boo-zi egga-nzi, si - tu-la eddo-boo-zi wa - mma, ya-sangu -  
 za, ya-sa-ngu-za le-ka ku - tya. Ga-mba e - bi-bu-ga bya Ju-da: La - ba Ka-to-nda wa-mmwe atuu -  
 se. La - ba Ka-to-nda wa-mmwe atuu - se na-nta-me-ggwa. Si-tu-ka, si-tu - ka ggwe ala-ngi-ri -  
 ra ama-wu-li-re aga-sa-nyu - sa. sa. Je - ru - sa - le - mu ya - ka - ya - ka - na  
 a - nti eki-ta-ngaa-la ki-tuu-se mu ggwe, si - tu-ka ola-be, si - tu-ka ola-be eki - ta-ngaa-la, ki -

ta - ngaa - la ki - si - bu - se mu ggwe n'e - ki - tyi - bwa ky'O - mu - ka - ma la - ba ki -  
 tuu - se, ki - si - bu - se mu ggwe, ki - si - bu - se mu ggwe kya - ki - re ensi yo - nna.

**ABABADDE MU NZIKIZA**

(Is 9:2-7)

**Chorus II**

*Leader* A - ba - ntu aba - ba - dde mu nzi - ki - za *Chorus* ba - la - bye eki - ta - ngaa - la. *Leader* Ba - la - bye eki - ta - ngaa - la *Chorus* ki - ne - ne dda - la nnyo.

*Leader* A - ba - ba - dde nga baa - bu - la, *Chorus* ba - la - bye eki - ta - ngaa - la *Leader* ba - la - bye eki - ta - ngaa - la *Chorus* ki - ne - ne dda - la nnyo.

*Leader* A - ba - bu - nda - bu - nda *Chorus* ba - la - bye eki - ta - ngaa - la *Leader* e - ki - ta - nga - li - jja *Chorus* ba - la - bye eki - ta - ngaa - la

*Tutti* ki - baa - ki - dde ba - la - bye eki - ta - ngaa - la, ki - baa - ki - dde baa - la - ba eki - ta - nga - la ne ba - sa - nyu - ka;

o - ba - wa - dde n'e - ssa - nyu e - ri - si - nga - wo obu - ngi e - ssa - nyu lya - bwe olyo - nge - dde - ko.

Ba - sa - nyu - ki - ra w'o - li ng'a - ba - ntu bwe ba - sa - nyu - ki - ra ama - ku - ngu - la. Ba - sa - nyu -

ka ng'a - ba - sa - jja a - ba - ga - ba - na emi - ga - bo gye ba - nya - ze ku - ba - nga e - ki - ko - li -

go eki - zi - to - wa oki - mu - ggye - ko, n'o - mu - ggo o - gu - ba - dde ku ki - be - ga - be - ga

o - gu - ku - tu - dde, n'e - ki - si - ki eki - mu - ba - dde - ko ku nsi - ngo na - kyo oki - me - nye - wo. Nga bwe kya - li mu mi - re - mbe

gya Me-di-a- ni e-ki-ga-tto ky'e-nta-lo kyo-ke-ddwa e-ki - re-mba ky'o-mu-saa-yi kyo-ke-ddwa, kyo -

ke-ddwa omu-li-ro. Ku - ba-nga wa-li-wo atu - zaa-li-ddwa. Ki? O - mwa-na wa bu-le-nzi, a -

zaa-li-ddwa; wa-li-wo atu - wee-re-ddwa. A-ni? O - mwa-na wa bu-le-nzi o - bwa-ka-ba-ka bwe bu-mu -

li ku ki-be-ga-be - ga kye n'e - ri-nnya lye lye ba-mu-tuu-mye li - vu-ga li-tyi: Mu -

buu-li-ri-zi omu-ku-lu dda - la Ka - to-nda ow'o-bu-yi-nza Ki - taffe ata-ggwa-wo, O-mu-la-ngi-ra Ki-wa-mi -

re - mbe. O - bwa-ka - ba-ka bwe bu - ne-ne dda-la, o - bwa-ka - ba-ka bwe

bwa mi-re-mbe e - gi - ta - ko - ma. O ma. Na-mu-lo-ndo ye ya nnyu-mba ya Da-u - di, n'o-bu-yi-nza

bwe ya-bu-nywe-re - za mu bwe-nka-nya, mu ma-zi - ma. O-ku-va ka - ti pa-ka emi-re-mbe

gyo-nna, o - ku-va ka - ti o - ku-tuu-sa e - mi-re-mbe gyo-nna. e - mi-re-mbe gyo-nna o -

kwa-ga-la kwa Ka-to-nda w'a-ma-ggye ki - no kye ki-ri-ko - la. Mmwe mu-yi-mbi-re Omu-ka-ma

o - lu-yi-mba olu - ggya mmwe mu-yi-mbi-re Omu-ka-ma mmwe ensi zo-nna zo-nna

Chorus

Leader



Mu - te-nde-re-ze, mu - te-nde-re-ze eri-nnya lye ekku - lu dda-la dda-la. Mu - te-nde-re-ze, mu -



te-nde-re-ze eri-nnya lye ekku - lu dda-la dda-la nnyo. Mu-la-ngi-ri-re, mu-la-ngi-ri-re



bu - li ka-na-ku obu-lo-ko - zi bwe, e - ki-tyi-bwa kye mu-ki-nyu-mye mu ba - ka-fii - ri ne mu ba-ntu



bo-nna, e - bi-kuu-no bye mu-bya-tu-le; e-ggu-lu li-saa-kaa-nye n'e-nsi eja-gu-ze, e-nnya-nja ewuu-me



na byo-nna e - bi-gi - ju - dde, e-ggu-lu dda - la li-sa-nyu-ke, li-sa-nyu - ke, li-ja-gu-ze atuu-se



O-mu-la-ngi-ra; li - sa-nyu - ke, li-ja-gu-ze n'e-nnya - ja ewu-lu-gu-me, n'e-mi-ti e-gy'e-ki-bi-ra



gya-ku-sa-nyu-ka mu maa-so g'O-mu-ka-ma a - nti atuu - se, ku-ba-nga atuu - se. A-zze



a - fu-ge ensi yo-nna, a - zze a-fu-ge ensi yo-nna. E-nku-lu-ngo y'e-nsi y'a-na-gi-fu - ga-nga, mu bu-tuu-fu;



yo-nna y'a-na-gi-fu - ga-nga, a-ba-to-nde bo-nna y'a-na-ba-fu - ga-nga mu bu-tuu-fu bwe nnyi-ni y'a-na-ba-fu -



ga-nga mu bu-tuu-fu ne mu bwe-si-ge bwe e - mi-re-mbe n'e-mi-re-mbe gyo-nna.

### Ekirango (Recitative)

*Tenor*



Mu - tee-ke-tee - ke e - kku - bo mu ddu - ngu. Mu-tee-ke - tee-ke ekku - bo mu ddu -



ngu O-mu-ka - ma wuu-no ajja, mwa-sa-nja - la, mwa-sa-nja - la ate-re-ze - bwe,  
a - te-re-ze - bwe Ka-to-nda wa-ffe mw'a-na-yi - ta ng'a-ku-tu - la eddu-ngu. Bu -  
li ka-wo-nvu ka-jju-zi-bwe. Bu - li lu-so-zi lwo-nna, bu - li ka-so-zi ko-nna,  
byo-nna bi - see-tee-re. O - lw'e-ki-tyi-bwa ky'O-mu-ka-ma ki - ryo-ke ki-ra-bi -  
ke, ki - ryo-ke ki-ra-bi - ke, a - ba-ntu bo-nna ba - lyo-ke ba-ki-ra - be.

**EDDUNGU LISANYUKE**

**Chorus III**

E - ddungu, eddungu li-sanyu-ke li-sanyu-keekkalu li-sanyu-ke li-sanyu-ke nnyo. ke nnyo.  
e - ddungu eddungu e - li-sanyu -  
ke li-sa-nyu-ke li-sa-nyu-ke n'e - nsi enka-lu, bi-sa-nyu - ke, bi-sa-nyu-ke, bi-sa-nyu -  
ke li-sa-nyu - ke  
ke, bi-sa-nyu-ke. O - lu-koo-la ka lu-ja - ga - nye ka lu-to - jje - re lu-ja - gu -  
lu-ja - gu-ze lu-to - jje-re  
ze lu-to - jje-re lu-ja - gu - ze. Lwa - nye ng'e-ki - myuu - la  
lwa-nye ng'e-ki-myuu-la Ka lu-ja-gu-ze ka lu-ku - be embuu-tu n'o-lu-yi-mba

nga lu-ta-dde-mu. Mu-gu - me, mu-gu-me, mu-gu - me Ka-to-nda wa-mmwe atuu - se. Mu-gu - me, mu-gu-me, mu-gu -

me Ka-to-nda wa-mmwe atuu - se. A - tuu-se atuu-se atuu-se ye Ka-to-nda wa-mmwe atuu - se. A -

tuu-se atuu-se atuu-se mmwe mu-mu-la-be wuu - no ajja, mu-le-ke ku - tya wuu-no ajja. Mu-la-be, mu-la -

be omu-la-ngi-ra a-tuu - se. Mu-la - be omu-la-ngi-ra a-vaa - yo nna-nta-me-ggwa. O-ku-woo-le-ra eggwa-nga

kuu-ku-no ku-tuu-se, o-ku-ga-bu-la empee-ra kuu-ku-no ku-tuu-se; a - zze, a - zze oku-tu-wo-nya a-tuu -

se ssi-ba-li - mba. Ba-li - ra-ba eki-tyi-bwa ky'O-mu-ka-ma n'o-bu-ku - lu bwe; mi-ko-no emi -

tii-tii-zi gi-ri-nywe-ze - bwa, mu-gu - me mmwe mu-le-ke ku-tya, mu-gu - me mmwe mu-le-ke ku - tya. *DC.*

A-maaa-so ga ba-mu-zi - be ga-li-ra-ba a-maa-so ga ba-mu-zi - be ga-li-ra-ba. O - lw'o-mu-le-ma a-lye-buu-ki -

za ng'e-nnaa-ngaa-zi o - lw'o-mu-le-ma alye-buu-ki - za ng'a-ka-li-ga O - lwo ka-si-ru a - li-yi-mba

n'o-ku-ja - gu-za, o - lwo ka-si-ru a - li-yi-mba n'e-ssa-nyu ezzi-bu. Ku - ba-nga

b'a-nu-nu-dde ba-li-ko-ma - wo, ba - li-ko-ma-wo nga ba-yi - mba nga ba-yi -  
n'a-ba-si - be ba-li-ko-ma - wo, ba - li-ko-ma-wo nga ba-yi - mba ku-ba-nga  
n'e-ki-tyi-bwa ki - ri-ko-ma - wo, ki - ri-ko-ma-wo mu Si-o - ni

mba nga ba-zi - na nga ba-yi-mba, nga ba-sa-nyu - ka. E-ssa-nyu eri-ta-ggwa-wo li-ba-li ku maa-so,

ba-li-ko-ma-wo nga ba-zi - na nga ba-yi-mba nga ba-sa-nyu - ka. E-nna-ku zi-we-dde, ebi - woo-be bi-we-dde;  
E-nna-ku zi-we-dde, Ka - to - nda asi-tu - dde

e-nna-ku zi-we-dde, ebi - woo-be bi-we-dde. Ka-tu-saa-nyu-ke, ka tu-ja-ga-nye, tu-sa-ga-mpi-ze ffe  
e-nna-ku zi-we-dde Ka - to - nda asi-tu-dde.

O - mu-lo - ko-zi a - tuu - se Ka - to - nda mu - zi - ra - ki - sa. Mu - zi - ra - ki - sa Ka - to - nda

wa - nge oyo, mu - zi - ra - ki - sa mu - zi - ra - ki - sa Ka - to - nda wa - nge oyo mu - zi - ra - ki - sa.

**Akalowoozo (Aria)**

**(Sof 3:14-18)**

Lee-kaa-na, lee-kaa-na mu-wa-la wa Si-o-ni lee-kaa-na. I - sra-e - li lee-kaa -

na nnyo, sa-nyu - ka, sa-ga-mpi - za nnyo n'o-mu-ti-ma gwo gwo-nna. Mu-wa-la wa Si-o-ni, mu-wa-la

w'o-yo Ye - ru - za - le - mu sa-nyu-ka nnyo. O - mu-ka - ma Ka-ba-ka wo wuu -

no ajja. A-li mu ggwe wa-ka-ti, a-li mu ggwe. To-dda-yo ku - tya ka-be-nje, a-li mu ggwe.

Lu-na-ku olwo bwe lu-li - kya ba-li-ga-amba bo-nna bwe ba - tyi: A - yi Si-o - ni le-ka ku -

tya. e-mi-ko-no gyo gi-re-me ku - la-ga-ya, Mu-ka-ma Ka - to-nda wo a-li mu ggwe, a-li mu

ggwe wa-ka - ti. Saga-mbi - za nga bw'o-zi - na ng'a- li ku lu-na-ku lw'e-mba - ga.

**JAGANYA NNYO MUWALA WA SIONI**

**Chorus VI**

Ja-ga-nya nnyo mu-wa-la wa Si-o-ni, I - sra - e - li ja-ga-nya nnyo, ja-gu-za

nnyo, ja-gu-za nnyo mu-wa-la wa Si-o-ni mu mu-ti-ma gwo sa-ga-mbi-za, su-gu-mbi - za. We-sii -

mye, we-sii-mye aba-la-be bo aba-zi-ki-za nga te-ba - kya-dda. Sa-nyu-ka nnyo, sa-nyu-ka

nnyo Ka-to-nda wo aku - tuu-se a - li mu ma-kka - ti go sa-nyu-ka sa-ga-mbi - za. A -

zze, a - zze a - zze Ka-to-nda wo azaa-li - ddwa mu kya-lo kya Da-u-di, Kri-stu omu-to mu-la-bye - a-zze, a-zze

ko nze ne mbu-gu-jja, a - yi, a - yi omu-to mu-lu-ngi ozze otya Ka-to-nda wa-nge ozze otya? O-zze

otya Mes-si - ya wa-nge ozze otya, ka-tu - la-be, a - zaa-li-ddwa Ka-ba-ka omu - tee-fu.

E - nsi yo-nna yo-nna esa-nyu - ke. E - nsi yo-nna yo-nna esa-nyu - ke dda-la dda-la ye-sii -

me, dda-la dda-la k'e-sa-nyu - ke. Ki - kuu-no, ki-kuu-no Kri - stu omu-la-ngi-ra azaa-li -

ddwa mu ma-kka-ti ga-ffe ebi-wu-lu-gu-ma te-bi-tu - tii-se; tu - na-tya ki Mu-ka-ma ali

mu ffe, tu - na-tya ki Mu-ka-ma atu - se-nze. Tu - se-nze. Zi - tu-ggye, zi-tu-ggye ku

lwa Ka-to-nda wa-ffe, zi - tu-ggye, zi-tu-ggye ku lw'O-mu-lo-ko-zi azze. zi - lw'O-mu-lo-ko-zi azze.

Em-ma-nue-li wuu-no atuu - se gwe ba-tu-ga-mba, n'o-bu-lo-ko-fu a-tuu - se Ka-to-nda Mwa-na. A -

zze, Si-o-ni ng'o-mu-sa-nyu-zi-zza a - zze, Si-o-ni ng'o-mu-sa-nyu-si-zza. a - ng'o-mu-sa-nyu-si-zza.

A - ku-waa-na-waa-na wu-li - ra, aku-suu-ta-suu-ta, n'e-ssa-nyu aku-yi-mba Ddu - nda akwo-ge-re-zza

A - kwa-ga-la nnyo Ddu - nda aku-jji-ri - dde; ta-kyu-ka-kyu-ka, mu-saa-si-zi nnyo,

a-tuu-sa by'a-ga-mba, n'e-ya-li awa-bye amwa-ni-ri - za n'a-fu-mba n'e-mba-ga, nga mu-saa-si-zi! Tu -

yi-mbe, tu-te-nde, tu - te-nde b'a-nu-nu-dde. Twe-ba-ze omu-li - ndwa atuu - se atu-jji-ri - dde.

E - ri mu ggu-lu gy'a-tu - dde, Mu-ka-ma wa-ffe, e - tu - tu-nu-see-yo obu-la - mu, tu-mwe-ba-ze-nga.

Ng'a-va mu ggu-lu gy'a-bee - ra, Mu-ka-ma wa-ffe, O-mu-nu-nu-zi y'a-zze dda, tu-mwe-ba-ze-nga.

Ng'a-le-ka eggu-lu na byo - nna Mu-ka-ma wa-ffe, a - bi-vu-dde-mu n'a-kka eno tu-mwe-ba-ze-nga.

O-bu-nu-nu-zi bw'a-lee - se, Mu-ka-ma wa-ffe, bu-tu-yii-ke-ko aba-kki-ri - za, tu-mwe-ba-ze-nga.

E-kk-bo eri-ba-dde li-zi - bye Mu-ka-ma wa-ffe, O-mu-la-mu-zi n'a-li-ggu - la, tu-mwe-ba-ze-nga.

Ga-zi-ya e wee-ma yo, ga-zi-ya e wee-ma yo, ga-zi-ya e wee-ma yo ggwe omu-gu-mba ata-zaa-la, ga-zi-ya

e wee-ma yo n'e-mi-gwa gi - ree-ge, n'e-nko-ndo nywee-re-za dda-la nnyo, a - b'o-lu-lyo lwo ba-jja

nywee-re-za dda-la nnyo a - b'o-lu-lyo lwo ba-jja baa-ba-no ba-tuu-se, a baa-ba-no ba-tuu-se.

ba-jju-ze ama-yu-mba a - ga-le-kwa etta-yo e-ki-bu-ga eky'e-dda ba-ki-bee-re-mu O-wo-ne eki-swa-lo

e-ya-ku-to-nda ka-ti yee-ba-le Mu - ka-ma w'a-ma-ggye, Mu - ka-ma w'a-ma-ggye lye li-nnya lye.

Na - kwa-bu-li-ra-ko ka-see-ra n'o-bo-naa-bo-na mu-wa-la wa Si-o-ni, ka - ti nno nzuu-no nzi-ze,

o-mu-sa-jja yee-ra-bi-ra atya omu-kya-la w'o-bu-vu-bu-ka bwe? Ka-ti nno nzuu -

no nzi-ze. Na - kwa-bu-li-ra ka-see-ra we - tuu-li-re, nze nja ku-ku-ko-mya-wo nga

nkwa-ga-la mu-kwa-no, mu-kwa-no nkwa-ga-la, nkwa-ga-la n'okwa-ga - la oku-ta-ko-ma



Mu-ka-ma Ka-to-nda nze nga-mba bwe kya-baa-wo: Nze na-la-yi-ra ne No-wa, mu bya-faa-yo, Mu-ka-ma Ka-to-nda nze



nga-mba bwe kya-baa-wo Si-ri-ku-zi-sa na mu-ju - zi o-gwa-baa-wo Mu-ka-ma Ka-to-nda nze  
Si-ri-bo-ggo-la k-ba osa - bye o-ya-mbye nnyo Mu-ka-ma Ka-to-nda nze



nga-mba bwe kya-baa - wo A-ga-so-zi go-nna ga - yi-nza oku-vaa-wo n'o-bu-so-zi bwo-nna bu -  
nga-mba nze nsii-mye nnyo.



yi-nza oku-nyee-nya na - ye enda-gaa-no ya-nge n'o-mu-kwa-no gwa-nge bya lu-bee-re-ra.

### Ekirango

*Tenor*



A - ba - su - mba baa - li ku tta - le nga ba - lu - nda, baa - li ba - lu - nda endi - ga zaa - bwe mu ttu - mbi,



gye baa - ku - ba amaa - so nga Ma - la - yi - ka azze, n'a - yi - mi - ri - ra ku - mpi n'a - ba - ga - mba bo - nna:



Mu - le - ke ku - tya aba - nge, mu - le - ke ku - tya, a - nti mbaa - le - te - ra ama - wu - li - re a - g' e - ssa - nyu dda - la eri - ngi ennyo



e - ri - na - bu - na a - ba - ntu bo - nna. O - lwa lee - ro Omu - lo - ko - zi azaa - li - ddwa,



mu ki - bu - ga kya Da - u - di, O - mu - lo - ko - zi azaa - li - ddwa, Ye Kri - stu O - mu - lo - ko - zi,



O - mwa - na gwe mu - la - ba mu mma - nvu, Ye Kri - stu O - mu - lo - ko - zi Mu - ka - ma wa - mmwe.



A - mangu ago ne wa - jja - wo eki - bi - nja ky' e - ggye ery' o - mu ggu - lu, nga ba - tenda Ddu - nda Na - mu - ge - re - ka nga ba - ga - mba:

# KIBBIITU

## Chorus V

Ki - bbii - tu, ki - bbii - tu mba - buu - li - re ki - bbii - tu; ki - bbii -  
tu mba - buu - li - re'e Be - te - le - mu. Ki - bbii - tu mba - buu - li - re'e Be - te - le - mu.  
Mu ttu - mbi dda-la dda-la wa-ka-ti eyo, ki-bbii-tu mu nzi-ki - za dda-la e-dda ng'e-ku -  
tte, ki - bbii - tu ng'e - ku - tte ete - saa - si - ra a - li wa - bi.  
Nga zoo - ge - ra e - ngo - mbe o - ku - ka - ma - la ki - bbii - tu e - z'e -  
gye e-rya ba-li a-ba-tu-ku - vu ki-bbii-tu be baa - bo a-ba-vu-za ku ngo - mbe  
Ye wuu - yo eya-la-ngi-bwa-nga ab'e - dda, ki-bbii-tu Ye wuu - yo eya-ye-ye-bwa-nga olu-ta -  
ta, ki - bbii - tu Ye wuu - yo eya - su - ni - bwa - ku nna - nga.  
A - va wa Omu-lo-ko-zi oyo atuu - se? ki-bbii-tu A - jja atya omu-li - ndi - bwa oyo ewa -  
ffe ki - bbii - tu A - va wa omu - li - ndi - bwa oyo atuu - se?  
Ma-ri-ya we - ba - le ku - zaa - la ma - zuu - ku ga - no ma - zuu - ku, Mwa - na wa bu -



O - za - dde Ka-to-nda Ye-zu ga-no  
le-nzi ma-zuu - ku. ma - zuu-ku ma - zuu-ku, Mwa-na wa bu -

O-fuu - se omu-za-dde wa Ddu-nda ga-no  
le-nzi ma-zuu - ku. ma - zuu-ku ma - zuu-ku, Mwa-na wa bu -

O-fuu - se omu-ga-nzi wa Taa-ta ga-no  
le-nzi ma-zuu - ku. ma - zuu-ku ma - zuu-ku, Mwa-na wa bu -

O-fuu - se Na-ma-so-le Nnya-ffe a - tyi-bwa  
le-nzi ma-zuu - ku. ma - zuu-ku ma - zuu-ku, Mwa-na wa bu -

Yo-ze-fu we-ba-le oku-wo-nga dda-la nnyo  
le-nzi ma-zuu - ku. ma - zuu-ku ma - zuu-ku, Mwa-na wa bu -

Ggwe akuu - ma ama-ku-la ga Ddu-nda, nku-te-nda;  
le-nzi ma-zuu - ku. ma - zuu-ku ma - zuu-ku, Mwa-na wa bu -

Twe-ya - nze Ka-to-nda Mwa-na, a - tuu-se;  
le-nzi ma-zuu - ku. ma-zuu-ku ma - zuu-ku, Mwa-na wa bu - le-nzi ma-zuu - ku.

E-nsi yo-nna yo-nna mu - jje tu-yi-mbi-re Omu-ka-ma. Yee! E - ki-tyi-bwa mu ggu-lu,

n'e - mi-re - mbe ku - nsi n'e - mi-re - mbe ku - nsi ku ba - ntu b'a - ya - ga - dde atyo.

Ba - ma - la - yi - ka ba - zze wu - li - ra ba - ga - mba: Yee! E - ki-tyi-bwa mu ggu-lu,  
A - ba - tuu - fu b'a - lo - nze wu - li - ra ba - yi - mba  
Ffe ama-wa-nga ga-zze - mu wu - li - ra tu - ga - mba  
E - ki - tyi-bwa kya-lee - se ku nsi te - ki - te - ndwa  
Ffe aba-jee-mu tu - bu - ddwa kaa-ka-no tu - ga - mba



n'e - mi - re - mbe ku - nsi n'e - mi - re - mbe ku - nsi ku ba - ntu b'a - ya - ga - dde atyo. *D.S.*



Twe - ba - ze tu - yi - mbe nnyo olwa Kri - stu a - zze. Yee! E - ki - tyi - bwa mu ggu - lu,



n'e - mi - re - mbe ku - nsi n'e - mi - re - mbe ku - nsi ku ba - ntu b'a - ya - ga - dde atyo.

**IV**

<p>Mu</p> <p>jje tu - tuu - ke - yo aba - nge,          nsi tu - yi - mu - ke aba - nge,          jje tu - mwe - yu - ne atuu - se,          zze tu - sa - nyu - ke aba - nge,          nna tu - ge - nde - yo atuu - se,          nna ka - twe - ya - le aba - nge,          nna ka tu - we - re aba - nge,          ro tu - sa - nyu - ke aba - nge,          jje tu - ge - nde - yo atuu - se,</p>	<p>o - ba - li - nda</p> <p>o - ba - li - nda</p>	<p>1. - 8.</p> <p>Kri - stu oba - li - nda</p> <p>Kri - stu oba - li - nda.</p>	<p>9.</p> <p>Kri - stu oba - li - nda</p> <p>E -          Mu -          A -          Ffe -          Ffe -          Lee -          Mu -</p> <p>Kri - stu oba - li - nda.</p> <p>Kri - stu oba - li - nda.</p>
---	---	---	--

o - ba - li - nda      Kri - stu oba - li - nda.      Kri - stu oba - li - nda.

### Kirango (Recitative)

*Bass solo*



A - maa - so ga ba - mu - zi - be ga - li - ra - ba, a - ma - tu ga ba - ki - gga - la ga - li - ggu - ka.



A - ba - le - ma ba - li - buu - ka - buu - ka ng'e - nna - ngaa - zi, o - lu - li - mi lwa ba - ka - si - ru lu - li - yi - mba.

### Aria (Kalowoozo)



A - jja ku - lii - sa a - ba - ntu be ng'o - mu - su - mba. A - jja ku - lii - sa a - ba - ntu be ng'o - mu -



su - mba. A - jja ku - wa - mbaa - ti - ra obu - li - ga obu - to ku ki - fu - ba kye a - bu - lii - se.



A - jja ku - ku - le - mbe - ra ezi - ri - na obu - to a - zi - twa - le mu ma - lu - ndi - ro ama - lu - ngi.



Mu - jje gye - ndi mwe - nna, mwe - nna aba - ka - bi - ri - ddwa, mu - jje gye - ndi mba - too - wo - lo - ko - se. se.

**Chorus**



A - maa - so ga ba - mu - zi - be ga - li - ra - ba, a - maa - so ga ba - mu - zi - be ga - li - ra - ba o -



lw'o - mu - le - ma alye - bu - ki - za ng'e - nna - ngaa - zi o - lw'o - mu - le - ma alye - bu - ki - za ng'a - ka - li - ga o -



lwo ka - si - ru a - li - yi - mba n'o - ku - ja - gu - za, o - lwo ka - si - ru a - li - yi - mba n'e - ssa - nyu ezzi - bu, ku -



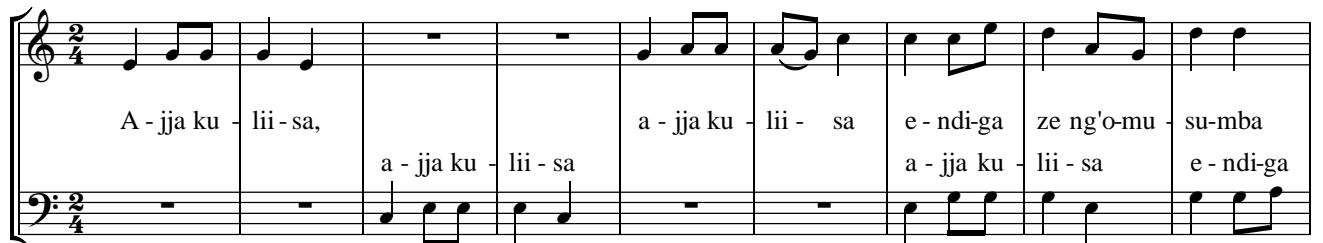
ba - nga b'a - nu - nu - dde ba - li - ko - ma - wo, ba - li - ko - ma - wo nga ba - yi -  
n'a - ba - si - be ba - li - ko - ma - wo, ba - li - ko - ma - wo nga ba - yi -  
n'e - ki - tyi - bwa ki - ri - ko - ma - wo, ki - ri - ko - ma - wo mu Si - o -



mba ku - ba - nga ni, nga ba - yi - mba nga ba - zi - na nga ba - yi - mba, nga ba - sa - nyu - ka.

**AJJA KULISA**

**Duet**



A - jja ku - lii - sa, a - jja ku - lii - sa e - ndi - ga ze ng'o - mu - su - mba  
a - jja ku - lii - sa a - jja ku - lii - sa e - ndi - ga

bw'a-zi-rii - sa. A - ku - ngaa-nye o - bu-li - ga obu-to mu mi-ko-no  
ze ng'o-mu - su-mba bw'a-zi-rii - sa

gye a - bu - wa-mbaa-ti - re ku ki - fu - ba - kye. a - la-mbi -  
A - la-mbi - ke zo - nna

ke zo - nna, a-zi-ra-mbi - ke zo - nna, a-zi-ra-mbi - ke zo - nna a-zi-ra-mbi -  
a-la-mbi - ke zo - nna, a-zi-ra-mbi - ke zo - nna, a-zi-ra-mbi - ke

ke ezi-ri - na obwa na, a-zi-ra-mbi - ke azi-twa- le gye zi - wu - mmu-li - ra.  
zi-ri - na obwa na azi-ra-mbi - ke gye zi - wu - mmu-li - ra.

## MUJJE

### Akalowoozo (Aria)

Tenor

Mu - jje, mu - jje gye - ndi, mu - jje. Mu - jje aba-koo - ye, mu-jje aba - ka-bi-ri - ddwa mba -

too-wo-lo-ko - se. Mu - jje gye - ndi mwe - nna, a - ba-koo - ye, aba - ka-bi-ri - ddwa,

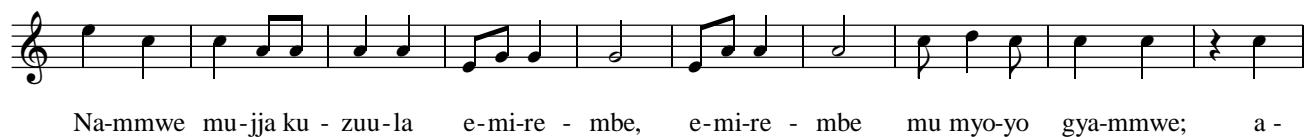
mu - jje mu - too-wo-lo-ko - ke, mu - jje gye-ndi mu-wu-mmu - le. Mwe-tti - kke eki-ko-li -



go, mwe-tti - kke eki-ko-li - go kya - nge, mu-nji-gi-re - ko, ku - ba ndi mu -



tee - fu mwe-too-wa - ze, nze ndi mu - tee - fu, mwe-to-wa - ze mu mwo - yo.



Na-mmwe mu-jja ku - zuu-la e-mi-re - mbe, e-mi-re - mbe mu myo-yo gya-mmwe; a -



nti eki-ko-li - go ekya - nge kya-ngu nnyo, n'o-mu-gu-gu gwa-nge mwa - ngu.

EKITUNDU EKY'OKUBIRI

MPONYA ABALABE

Chorus VI

Mpo - nya, mpo - nya, mpo - nya aba-la-be ba-nge a - ba-nnu-mba, mpo - nya, mpo -  
nya aba-la-be ba-nge a - ba-nnu-mba. Mpo - Mpo - nya Mu-ka-ma wa-nge aba - ko-zi b'o-bu-bi, mpo -  
nya Mu-ka-ma wa-nge aba - sa-jja b'o-mu-saa-yi, baa-ba-no ba-lii-mi - sa obu-la-mu bwa-nge.  
Baa-ba-no b'a-maa - nyi ba-wo-nde-ra; nyi ba-wo-nde-ra, ba - nne-too-lo-dde, ba -  
nne-too-lo-dde. Mu nze te-mu-li ki-bi Mu-ka-ma wa-nge, Mu nze te-mu-li mu-sa-ngo,  
te-mu-li mu-sa-ngo. Ba-nna-nga bu-so-mi bwa ddii-ni Mu-ka-ma oma - nyi ggwe. Ba-nna -  
nga ki-ga-mbo kyo, ne ba-fu-bu-tu-ka oku-nnu - mba. Ti-we-ba - ka Mu-ka-ma wa-nge nzi -  
ru - ki-ri-ra. Ti-we-ba - ka Mu-ka-ma wa-nge. Jja-ngu olwa-ne. Jja-ngu olwa-ne Mu-ka-ma  
wa-nge Ka-to-nda w'a-ma - ggye, Mu-ka-ma wa-nge, jja-ngu olwa-ne. Ba-nnu-mba Mu-ka-ma  
wa-nge ba-nnu-mba Bo-nna ba-swa - le. Zuu-ku-ka Mu-ka-ma wa-nge zuu-ku-ka.  
Ba - la - be ba - nge.  
Ba - me - ggu - ze eri!  
A-nkuu-ma ye ggwe.

Zuu-ku-ka, ga-bo-ne-re-ze ama-wa-nga go-nna. To-ba-saa-si-ra, to-ba-saa-si-ra aba-sa-jja

ab'e-nkwe, to-ba-saa-si-ra. Ggwe Mu-ka-ma wa-nge o-ba-se-ke-re-ra,

Ggwe Mu-ka-ma wa-nge o-ba-se-ke-re-ra, nnyo, A-ma-wa-nga go-nna to-ga-la-ba-mu ka bu -

ntu ssi-ri-mba, a-yi obu-zi-ra bwa-nge, a-yi Ka-to-nda wa-nge; e-ki-go kya-nge

Nnaa-ku-saa-ko omwo-yo ggwe Mu-ka-ma wa-nge; nnaa-ku-ssa-ko omwo-yo. Ggwe ku-saa-si-ra kwa-nge

o-mpu-li-dde mu bu-yi-ni-ke n'o-nku-ba-gi-za. Ndi-yi-mba, ndi-yi-mba-nga o-bu-yi-nza bwo Mu-ka-ma

wa-nge, nze ndi-ja-gu-za ku ma-kya olw'o-bu-ya-mbi bwo. Ndi-bwo. O-nfuu-ki-dde e-ki-go eki-

nywe-vu. O-nfuu-ki-dde e-ki-ddu-ki-ro O-ro A-yi obu-zi-ra bwa-nge

nnaa-ku-yi-mbi-ra ku ndo-ngo Mu-ka-ma wa-nge, nnaa-ku-yi-mbi-ra ku ndo-

ngo, ki-go kya-nge. ngo, mu kwe-sii-ma, nze mpangu-dde e-wa Ki-taffe gy'a-li mu ggu-lu, mu ggu-lu.  
a-nsaa-si-dde.  
nze mpangu-dde.

*Soprano*  
*Bass*  
La-ba, la-ba Aka-li-ga. La-ba, la-ba Aka-li-ga a-ka-ggya-wo ebi-bi by'e-nsi

La-ba, la - ba Aka-li-ga, la - ba, la-ba Aka-li-ga Ya-vu - mi - bwa, yee-gaa - ni -

bwa, mu - sa - jja mu-la-ba-nna - ku, a-ma-nyi - dde oku-nyo - lwa. *DC.*

Y'a - waa - yo a - ma-be-ga ge eri a - ba-mu-swa-nyu - la, n'e-mba ze eri n'e-mba

aba-mu-sa-la - ko obwo - ya, a - ba-mu - wa-nyu y'a - waa - yo a - ma-be-ga ge a - ma-be-ga

e - ri a - ba-mu - swa-nyu - la a - ba-mu - swa-nyu - la a - ba-mu - swa-nyu - la a - ba-mu -

swa-nyu - la a - ba-mu - swa-nyu - la ya-ba-le-ke - ra ama-be-ga ge.

Te-ya-kwe - ka maa-so ge e - ri aba-mu-swa - za a - ba-mu-fu-jji - ra ama-lu - su.

**Chorus**

Ki - tuu - fu, ki - tuu - fu, Ye ye - ti - kka, Ye ye - ti - kka

e - mi-gu-gu gya-ffe. E - nna-ku za - ffe ya - ze - ti - kka.

Ya-fu-mi-ti - bwa lwa mi-sa-ngo gya-ffe. Ya-nuu-bu - lwa lwa bi-bi bya-ffe.

E - ki-bo - ne-re-zo ekyo kye kya-tu-wa emi - re-mbe. O - lw'o-bu-swa -



nyu obwo, twa-wo-nye-ze - bwa, o - lw'o-bu-swa-nyu bwe, twa-wo-nye-ze - bwa.

**Chorus VII**

O-mu-saa-yi gwa Ye-zu gu-ttu-lu-ku-ka gi-ra ola be. Gu-ttu-lu-ku - ka olw'e-nsi, gu-tu-nu-nu -

la. Te-wa-li ki-si-nga bwa-gazi Ye-zu bw'a-la-ga ku mu-saa-la-ba. Na-ffe nno tu-we-ennema ey'o-ku-kwa-ga-la.

1. Si-nga te-ya-fa Ye-zu twa-li ba-si-be, si-nga te-ya-fa Ye-zu twa-ndi-ge-nze wa?
2. Y'a-bo-na-bo-na Ye-zu n'a-yi-ti-ri-ra, y'a-ko-me-re-rwa Ye-zu n'a-tu-fii-ri-ra;

Ya-tu-nu-nu - la aba-ntu n'a-ba-ddi-ra-mu, n'a-ba-so-nyi-wa ekye - jo n'a-tu-saa-si-ra.  
 Ya-fu-mi-ti-bwa enni-nga n'a-lu-mi-zi-bwa, n'a-fu-mi-ti-bwa ama-ggwa g'o-mu-ge gu-li.

**Ekirango (Recitative)**

*Tenor*

Twa-li ng'e-ndi-ga ezi-bu-ze, twa-li-nga endi-ga ezi-bu-ze, zo-nna ezi-bu-nye emi-wa-bo.

Twa-li-nga endi-ga ezi-bu-ze zo-nna ezi-bu-nye emi-wa-bo. Twa-li ndi-ga ezi-bu-ze, twa-li ndi-ga ezi-bu-ze.

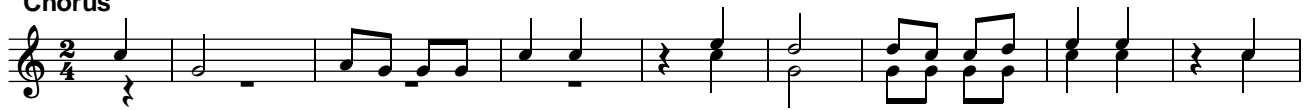
Nga bu-li omu a - ku - tte li - rye, a - ku - tte li - rye, a - ku - tte li - rye.

O - mu-ka-ma n'a-mu-bi-ni-ka o - bu-bi-bwa-ffe, a - ba - mu - la - ba ne ba - se - ka



Ba - mu - se - ke - re - ra, ba - mu - se - ke - re - ra o - ku - ka - ma - ra nga ba - ga - mba nti:

**Chorus**



A - nti yee-si-ga Ka - to-nda, a - nti yee-si-ga Ka - to-nda; ka -



le amu-wo - nye, ka - le amu-wo - nye, o - ba amwa-ga - la, o - ba amwa-ga - a.

*Soprano solo*



O-ku-ne-nya kwo ku-me-nye omu-ti-ma gwe, o - ku-ne-nya kwo, ku-me-nye, ku-me-nye o - mu-ti-ma gwo,



gu-ju-dde obu-lu-mi. Y'a-noo-nya anaa-mu-saa-si-ra, te-wa-li n'o-mu a - na-mu-saa-si-ra,



te - wa - li n'o - mu, te - wa - li n'o - mu. Tu - nu - la ola - be, tu - nu - la ola - be, o - ba



wa - li - wo enna - ku e - ri - nga eyi - ye, o - ba wa - li - wo enna - ku e - ri - nga eyi - ye.

*Bass*



Y'a-te-mwa ku nsi eya-ba-la-mu, y'a-te-mwa ku nsi ey'a-ba-la-mu o - lw'e-bi-bi



bya ba-ntu be, o - lw'e-bi-bi bya ba-ntu be y'a-ku-bi - bwa nnyo n'a -



lwa-la nnyo. Kyo - kka te - wa - le - ka mwo - yo gwe ma - go - mbe. Kyo



mbe. E - ra te - wa - le - ka mu - tuu - ki - ri - vu wo ku - vu - nda.

## NTAANA NJEREERE

### Chorus IX



Ntaa-na nje - ree-re Ye - zu alu-wa?                      Ntaa-na nje - ree-re Ye - zu alu-wa?



Ye - zu abu-ze, ta - lii-mu, Ye - zu aluu-wa? ta - lii-mu, Ye - zu abu-ze, ta - lii-mu Ye -



zu alu-wa? ta - lii-mu. Ba-mu-ta-dde wa Mu-ka-ma wa-nge, ba-mu-ta-dde wa Mu-ka-ma



wa-nge? Ye - zu abu-ze! nku - noo-nya, Ye - zu abu-ze! nku - noo-nya, Ye noo-nya.



Oh! Na-su-ze nku - noo-nya, Lwa-ki ombu - zee-ko, na-su-ze nku - loo - ta. Lwa-ki ombu - zee-ko?  
Na-su-ze nze nsi-nda, na-su-ze nze nkaa-ba.



Mu-ka-ma wa-nge lwa-ki ombu - zee-ko? Mu-ka-ma wa-nge lwa-ki obu - zee-ko?



Lwa-ki obu - zee-ko? Lwa-ki ombu - zee-ko? Mu - kaa-bi-ra ki ba-ka-zi



ba-ttu, Ye - zu y'a-zuu-ki - ra dda. Ba-ku-tu-tte wa Mu-ka-ma wa-nge, ba-ku-tu-tte wa mu-gan-zi



wa-nge? Mu - kaa-bi-ra ki ba-ka-zi ba-ttu, Ye - zu gwe ba-tta gy'a-li. Ba-ku-tu-tte wa Mu-ka-ma



wa-nge, ba-ku-tu-tte wa nze mbuu-li - ra. Ba-ku-tu-tte wa Ka-bii-te wa-nge?



Mu-le-ke ku - tya Tu - noo-nya owe Na - za-re-ti, mu-le-ke ku - tya tu - noo-nya Ye-zu  
Messiya Omulindibwa 27




gwe ba-tta. A-zuu - ki - dde Sse-bo. Ye-zu owe Na - za-re-ti, a - zuu - ki - dde Sse-bo



Ye-zu eya-tti - bwa sso. Mu-no ta - lii-mu, Ye-zu owe Na - za-re-ti, a - zuu - ki -



dde Sse-bo Mwa-na owa Ka - to-nda. Mu-la-be eki - fo kye, Ye-zu owe Na - za-re-ti



mwe ya-tee-ke - bwa ku lu-li, Mwa-na owa Ka - to-nda. Ka-le mu - ge-nde Ba - tu-me mu-ba -



ga-mbe ama - wu-li - re ama - lu-ngi. Mu-ga-mbe bo-nna nti: Ye-zu kye ya - ga-mba ki -



tuu-fu kya-go - bye dda. Ba-ge-nde bo-nna, ba - ge-nde Ga-li - ra-ya ba - mu-la-be obu -




lu-ngi. Ba-ge-nde ma-ngu ba - ge-nde Ga-li - ra-ya ba - mu-si - si-nka - ne eyo.



A-zuu - ki - dde mu-no ta - lii-mu, a - zuu - ki - dde. a-zuu - ki - dde. *DC.*



*Solo* Gwe noo-nya ka-bii-te wa-zzee-wa? Wa-zze wa Ggwe Ye-zu gwe noo-nya?!



O - ge-nze wa gwe ba-tta oge-nze wa? O - ge-nze wa nku-noo-nya



oge-nze wa? Nke-dde nnyo nku-naa-ze oge-nze wa? Bye nde-se

nku-sii-ge mbi-sse wa? A - ba-mu-sse mba-buu-za ya-zze wa? Mu -

mu-nda-ge, mu - mu-nda-ge gye mu-mu - ta-dde. O - wa-nge Ma-ri -

ya o - ka-bi-ra ki? O - wa-nge Ma-ri - ya o - noo-nya ani? O

*Soprano*  
Noo-nya Ye - zu gwe ba-tta age-nze wa? Ba-mu-ta-dde wa nzi-ra-ge eggu-mba lye. O -

ba dda-la oma - nyi-yo yo-ge - ra. O - ba dda-la oma - nyi-yo ntwa - la, ntwa - la. O

*Bass solo*  
O - wa-nge Ma-ri - ya, Ma-ri - ya. O - wa-nge Ma-ri - ya. O ya.

Mu-yi - gi - ri - za nda-bi - ra wa, nda-bi - ra wa Sse-bo! Mu-yi - gi - ri - za nda-bi - ra wa!

Nzuu-ki-dde. Mu-yi - gi - ri - za nda-bi - ra wa, nda-bi - ra wa Sse-bo! Mu-yi - gi - ri - za nda-bi - ra

wa! To - nkwa-ta-ko. Mu-yi - gi - ri - za nda-bi - ra wa, nda-bi - ra wa Sse-bo! Mu-yi - gi - ri -

za nda-bi - ra wa! Nze nge-nda wa Taa-ta. Mu-yi - gi - ri - za nda-bi - ra wa, nda-bi - ra wa Sse-bo!

Mu-yi - gi - ri - za nda-bi - ra wa! Ge-nda ma-ngu naa-we A - ba - tu - me oba -



ga - mbe: Nni-nya wa-ggu - lu eri Ki-ta - nge e - ra Ki-ta-mmwe mwe-nna.



Nni-nya wa-ggu - lu eri Ki-ta - mmwe e - ra Ka-to-nda wa-mmwe. Tu - na-si - si-nka -



na mpo-la e Ga-li - ra-ya, tu - na-si - si-nka - na to-tya. Tu Yee



azuu-ki - dde omu-wa-ngu - zi nta-lo! Yee, azuu-ki - dde omu-wa-ngu - zi nta-lo. Tu-kwa-ni -



ri-zza Ye - zu Lu-wa-ngu - la oggu-se. Mu-wa-ngu - zi oggu-se. Ye - zu mu-ga-nzi



wa-nge, o - vu-dde-yo ema - go-mbe olu - mbe olu-go-bye n'a-maa-nyi ovu-dde-yo ema - go-mbe olu -



mbe olu-go-bye lee-ro. O lee-ro. Al-le-lu-ya, al-le-lu-ya, al-le-lu-ya, al-le-lu-ya



al-le-lu-ya, al-le-lu-ya a-zuu-ki - dde, O-mu-lo-ko - zi a-zuu-ki - dde.

### MMWE EMIRYANGO

#### Chorus X

(Ps 23)




Mmwe emi-rya-ngo eg'y'e-dda mwe-ggu-le-wo mmwe. Mmwe emi-rya-ngo eg'y'e-dda mwe-ggu-le-wo Ka-ba -



ka ow'e-ki-tyi-bwa a - yi-nyi-re ka-ti, a - yi-nyi-re ka-ti. Mmwe-emi-rya-ngo eg'y'e-dda mwe-si-tu-le.



E-nsi-gi mmwe ez'e-dda na - mmwe mwe-si-tu-le, Ka-ba-ka omu-tyi-bwa a - yi-nyi-re, a - yi-nyi-re Ka-ba-ka omu -



tyi-bwa a-yi-ngi-re, mu-tyi-bwa, a-yi-ngi-re, nu-tyi-bwa, a-yi-ngi-re. Ka-ba-ka omu-tyi-bwa a-yi-ngi-re, Y'a-ni oyo?



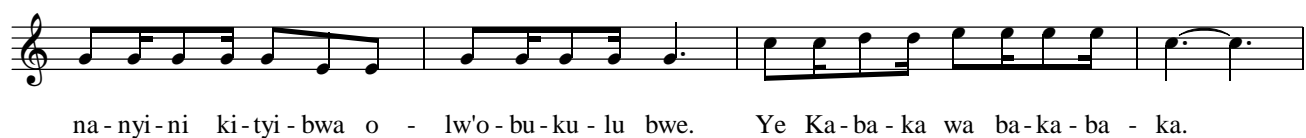
yi-ngi-re Y'a-ni oyo? O-mu-ka-ma mu-zi-ra ka-yi-ngo Y'a-ni? O-mu-ka-ma na-nnyi-ni bu-yi-nza. Y'a-ni oyo?



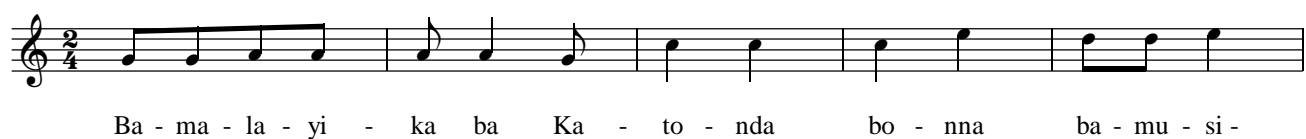
O-mu-ka-ma ka-li-bu-zi-ra mu nta-lo zo-nna, zo-nna, zo-nna, zo-nna. Mu-ka-ma omu-yi-nza, a -



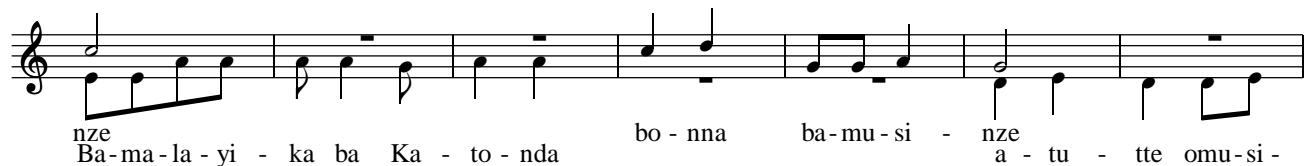
tyi-sa na-nta-me-ggwa, Ka-li-bu-zi-ra mu nta-lo zo-nna. Mu-ka-ma w'a-ma-ggye, Ye



na-nyi-ni ki-tyi-bwa o-lw'o-bu-ku-lu bwe. Ye Ka-ba-ka wa-ba-ka-ba-ka.



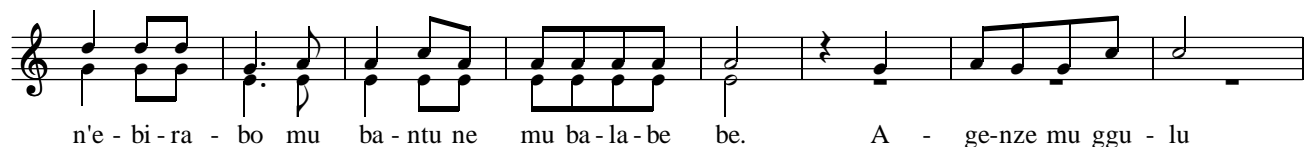
Ba-ma-la-yi-ka ba Ka-to-nda bo-nna ba-mu-si-



nze Ba-ma-la-yi-ka ba Ka-to-nda bo-nna ba-mu-si-nze a-tu-tte omu-si-



be ng'a-si-bi-ddwa a-tu-tte omu-si-be nga-si-bi-ddwa n'a-fu-na



n'e-bi-ra-bo mu ba-ntu ne mu ba-la-be be. A-ge-nze mu ggu-lu



a-tu-tte omu-si-be nga mu-si-be n'a-fu-na n'e-bi-ra-bo,

mu ba - ntu be ne mu ba - la - be be n'a - ta eddo - boo - zi ery'o-mwa-ngu - ka:

*Tenor*

Nze ma-soo - ka, nze nko-me-re - ro. Nze ma-soo - ka nze nko-me-re - ro.

Mu - ge-nde mu - la - ngi-ri - re, mu - ge-nde mu - la - ngi-ri - re ama-wa-nga go-nna.

Mu - la - ngi-ri - re, mu - la - ngi-ri - re, mu - la - ngi-ri - re ama-wa-nga

go-nna Ki - ta-nge abaa-ga - la, ng'a-baa-ga - la nnyo. A-ba-wa-dde Mwa-na

nze omu-ggu - la-nda. A - li-nzi-ki-ri - za n'a-ba-ti-zi - bwa ali-lo-ko - ka. Te-mu -

tya, te-mu - tya na - nge ndi na - mmwe o-ku - tuu-sa ensi lw'e-ri-saa-na - wo.

E - nsi eno eri-ggwa-wo na - ye eki-ga-mbo kya-nge te-ki-mo-goka kya mi-re-mbe na mi-re-mbe  
nsi eno eri-ggwa-wo na - ye eki-ga-mbo kya-nge te-ki-ri-bu-la kya mi-re-mbe na mi-re-mbe

gyo-nna, kya mi-re-mbe na mi-re-mbe gyo-nna, kya mi-re-mbe na mi-re-mbe gyo-nna. E gyo-nna.

ki - sa-la bbi-ri enju-yi n'o-bu-so-myo ki-bu-tuu-ka -  
Ki-ta - la, ki-ta-la, ki-ta - la, ki-ta-la, ki-ta - la, ki-ta-la, ki-ta - la, ki-ta - la, ki-ta -



ko, te-gwa bu - ta - ka e - ree-ta n'e - bi - ri - mba, te-gwa bu - ta - ka.  
la, nko-nyo-go, nko-nyo - go, nko-nyo-go, nko-nyo - go, nko-nyo-go te-gwa bu - ta - ka.

Yo-ge - ra Mu-aka-ma wa-nge a - nti omu-ddu wo ka - ti awu-li-ra nna-ko - la ntya nze?

Mpa eki-ga-mbo kyo Sse-bo e - ky'o-bu-la-mu, mpa eki-ga-mbo kyo Sse-bo e - ky'o-bu-la-mu.

ky'o-bu-la-mu. *mangu* A - nti eki-ga-mbo ky'O-mu-ka-ma kya mi-re-mbe na mi-re-mbe gyo-nna kya mi-re-mbe

na mi-re-mbe gyo-nna, kya mi-re-mbe na mi-re-mbe gyo-nna. E - nsi eno eri-ggwa-wo na - nsi eno eri-ggwa-wo na -

ye eki-ga-mbo kya-nge te - ki-mo-go-ka. E te - ki-ri - bu-la Kya mi-re-mbe E -  
ye eki-ga-mbo kya-nge

kya mi-re-mbe dda-la Ggwe ky'o-si-ba te - ri aga-mba e -  
kya mi-re-mbe kya mi-re-mbe

kya mi-re-mbe dda-la Ggwe ky'o-si-ba te-ri aga-mba e -  
kya mi-re-mbe E - ki-ga-mbo ky'O-mu-ka-ma y'E -

va-nji-ri-gye baa-ba-yi-gi-ri - za ky'o-si-ba te-ri aga-mba e -  
E - ki-ga-mbo ky'O-mu-ka-ma, Ye

mwa-ga-lwa Ki-ga-mbo wa Ka - to-nda, ky'o-si-ba te-ri aga-mba e -  
E - ki-ga-mbo ky'O-mu-ka-ma

ge ma-wu-li-re aga-sa-nyu - sa nti ffe-nna tu-nu-nu - ddwa, tu-li baa-na ba Ka - to-nda

Ha! Tu-li baa-na ba Ka - to-nda. Nja-zii-ra-na, nja-zii-ra - na ndo-ko-la nkwe-ga-yi-ri - dde, nna-kuu -

ma ebi-ga-mbo byo. Sii-ve-nga ku bi-ga-mbo byo, naa-nywe-za by'o-nji-gi-ri - za. za, a -

nti eki-ga-mbo ky'O-mu-ka-ma kya mi-re-mbe na mi-re-mbe gyo-nna, kya mi-re-mbe na mi-re-mbe gyo-nna

kya mi-re-mbe na mi-re-mbe gyo-nna. E - nsi eno eri-ggwa-wo na - ye eki-ga-mbo kya-nge te-ki-mo-go-ka.  
kya mi-re-mbe na mi-re-mbe gyo-nna. E - nsi eno eri-ggwa-wo na - ye eki-ga-mbo kya-nge te-ki-ri - bu-la.

Ki-nywe-vu, ki-nywe-vu, ki-nywe-vu kya mi-re-mbe na mi-re-mbe

gyo-nna kya mi-re-mbe Ki-nywe-vu, ki-nywe-vu, ki-nywe-vu kya mi-re-mbe

kya mi-re - mbe na mi-re - mbe gyo - nna kya mi-re - mbe gyo - nna.

**Akalwoozo (Aria)**

*Soprano (solo)*

Nga bi - sa-nyu - sa, nga bi - sa-nyu - sa! E - bi - ge - re

by'a - bo aba - la - ngi-ri - ra ama-wu-li - re aga-sa-nyu - sa. Nga bi - sa-nyu - sa!

Nga bi - sa-nyu - sa bu - la - la Messias Omurindwa 34 nga bi - sa-nyu - sa bu - la - la ssi -

ri - mba, nga bi - sa-nyu - sa ssi - ri - mba nga bi - sa-nyu - sa bu - la - la.

*Soprano*

E - bi - ge - re by'a - bo ba - la - ngi - ri - ra ama - wu - li - re aga - sa - nyu - sa.

*Bass*

E - bi - ge - re by'a - bo ba - la - nga a - ga - sa - nyu - sa.

Nga bi - sa - nyu - sa bu - la - la, Ssi - ri - mba nga bi - sa - nyu - sa bu - la - la. 1. 2. la.

Ba - la - ngi - ri - ra dde - mbe, ba - la - ngi - ri - ra dde - mbe ba - la - nga E - bi - ge - re by'a - bo aba.

ba - la - nga ba - la - nga ssi - ri - mba nga bi - sa - nyu -  
la - ngi - ri - ra ama - wu - li - re aga - sa - nyu - sa ssi - ri - mba nga bi - sa - nyu - sa bu - la -

sa bu - la - la ba - la - nga ba - la - nga ba - la - ngi - ri - ra nti Omu - ka -  
la la bu - la - la ba - la - nga ba - la - nga ba - la - nga ba - la - nga

ma Ka-to - nda a - ba - ntu be wuu - no aba - ku - ba gi - zza  
 ba - la - nga ba - la - nga ba - la - nga n' a - ba - nu - nu - la wuu - no atuu -

wuu - no atuu - se o - mu - nu - nu - zi Omu - ka - ma wuu - no atuu - se  
 se wuu - no atuu - se o - mu - nu - nu - zi Omu - ka - ma wuu -

Ye Ka - to - nda ate - nka - ni - ka wuu - no atuu - se mu Ki - ga - mbo mwa - yo - ge - re - ra.  
 no atuu - se Ye Ka - to - nda ate - nka - ni - ka wuu - no ayo - ge - ra.

**Chorus**

Lee - kaa - na mu - wa - la wa Si - o - ni, sa - ga - mbi - za mu - wa - la wa Si - o - ni, lee - kaa -  
 na, lee - kaa - na, sa - ga - mbi - za a - nti Omu - ka - ma Ka - to - nda, o - mu - lwa - nyi Na - nta - go - bwa,  
 ka - ti y' a - fu - ga. Lee - ro, lee - ro lu - no, lee - ro mba - ga Ka - to - nda y' a - fu -  
 ga. Lee ga. Jaa - gaa - na mu - wa - la wa Si - o - ni lee - ro mba - ga  
 lee - kaa - na mu - wa - la wa Si - o - ni, Ka - to - nda y' a - fu - ga we - wu - nye mu - wa - la

wa Si-o-ni, lee - ro mba-ga we-wu - nye obu-yi-nza bw'O-mu-ka-ma, Ka - to-nda y'a-fu - ga te-nde-re -  
 za mu-wa-la wa Si-o-ni, lee - ro mba-ga te - nde-re - za eki-sa eki - ku-jji-dde Ka - to-nda y'a-fu -  
 ga. Tuu-mbi - ra olu-so-zi lw'O-mu-ka-ma, ng'o-wo - mye Ka-to-nda lw'o-zze lu-no  
 Wee-ra-bi - re ebi-woo-be by'e-nsi eno, te-nde-re - za obu-yi-nza bw'O-mu-ka-ma. Lee - ro  
 lee - ro lu - no. Lee - ro mba-ga Ka - to-nda y'a-fu - ga. Lee ga.

**Ekirango (Recitative)**

*Tenor*

E - ddo - boo - zi lya - bwe lya - wu - li - rwa mu ma - wa - nga go - nna, e - bi - ga - mbo bya - bwe  
 bya-tuu-ka eyo ku nki-ngi z'e-nsi yo-nna yo-nna. E-ddo-boo-zi lya-bwe lya-wu-li-ki-ka, e-bi-ga-mbo bya-bwe  
 bya-tuu-ka mu nsi yo-nna yo-nna; kyo-kka ama-wa-nga ma-angi gaa-ga-na oku-ggu-la ama-tu.  
 Lwa - ki, lwa - ki, lwa - ki, lwa - ki, lwa - ki ama-wa-nga ga-bu-gu-ta - na? Lwa - ki nno?  
 Lwa - ki nno? Lwa - ki nno gee-ko-be-ra o-mu-sii-ge w'O-mu-ka-ma nti ba-mu-zi - se;  
 bee-ko-ba nnyi - ni, o-bu-su-ngu bu-ba-lya nnyi - ni, bee-ko-be-ra o-mu-sii-ge w'O-mu-ka-ma.

Ba-ka-ba-ka b'e-nsi ba - li omwo, a - ba-ku-ngu b'e-nsi ba - tee-sa o - ku-zi-ki-ri -  
 za Omu-ka-ma: Ka-tu-me-nye e - bi-ko-li - go, ka tu-me-nye e-nvu-ga za - bwe  
 tu - zi - suu - le, tu - zi - suu - le, tu - zi - wo - ne - re dda-la dda - la.

**LWAKI AMAWANGA GABUGUTANA**

**Chorus XI**

(Ps 2)

Lwa - ki ama-wa-nga ga-bu-gu-ta - na? Lwa - ki ama-wa-nga ga-bu-gu-ta - na? Lwa na? A-ba -  
 ntu ne ba - lo-woo-za ebi - ta - jja nsa, a - ba - ntu ne ba - lo-woo-za ebi - ta jja nsa. A - ba -  
 ta jja nsa. Lwa - ki, lwa-ki a - ma-wa-nga ga - bu-gu - ta - na? Lwa - ki lwa-ki  
 a - ma-wa-nga ga-bu-gu-ta - na? Ba-ka-ba-ka b'e-nsi n'a-ba-ku-ngu bo-nna wa - mu ba-si-tu-ka  
 o-ku-lwa-nyi-sa Omu-ka-ma n'o-mu-sii-ge we. Mu - ga-mba: "Tu-ku-tu - le envu-ba, tu-ku-tu -  
 le envu-ba za-bwe, n'e-mi-gwa gya-bwe tu-gye-gye - ko." Mu - swa-dde, mu-swadde O-mu-ka-ma ng'a-ba-se-ke-re -  
 ra, a-su-la oyo mu ggu-lu ng'a-ba-se-ke-re - ra. A-wo n'a-ba - ga-mba ye-nna ng'a-su-ngu - wa-dde, mu bu-swa-ndi  
 bwe n'a-ba-ka-nga: Nze nna-saa - wo Ka-ba-ka wa-nge a-fu-ge-nga mu Si-o-ni ku lu-so-zi lwa-nge



o-lu-tu-ku-vu, ka nna-ngi-ri-re Mu-ka-ma ye kye ya-tee-sa, a - nti y'a-ga-mba bw'a-tyi: "Ggwe oli mwa-na wa-nge o -



Iwa lee-ro nku-za-dde. Ggwe oli mwa-na wa-nge. Nja ku-wa ama-wa-nga. Ggwe oli mwa-na wa-nge o -



Iwa lee-ro nku-za-dde. Ggwe oli mwa-na wa-nge. bwe bu-si-ka bwo ggwe. Ggwe oli mwa-na wa-nge o -



Iwa lee-ro nku-za-dde. Ggwe oli mwa-na wa-nge. nja ku-wa ensi yo-nna. Ggwe oli mwa-na wa-nge o -



Iwa lee-ro nku-za-dde. Ggwe oli mwa-na wa-nge. e - be yi-yo yo-nna. Ggwe oli mwa-na wa-nge o -



Iwa lee-ro nku-za-dde. Ggwe oli mwa-na wa-nge. Ggwe ba-fu - gi-se mu-ggo. Ggwe oli mwa-na wa-nge o -



Iwa lee-ro nku-za-dde. Ggwe oli mwa-na wa-nge. o-gw'e-kyu-ma oya-se eki - bya. Ggwe oli mwa-na



wa-nge o-lwa lee-ro nku - za-dde. Ggwe oli mwa-na wa-nge. Ba-ka-ba-ka mwe-nna mu-te -



gee-re, mmwe aba-fu-zi mwe-nna ka - ti mu-ge-zi-wa-le. Mu-wee-re-ze Omu-ka-ma



nga mu-ti - nti-ma. mu-wee-re-ze Omu-ka-ma nga mu-ka-nka-na. Ssi ku-lwa ng'a-su-ngu-wa-la,



ne mu-bu-lwa obu-ddu-ki - ro. O-bu - su-ngu bwe bwe bu-ma-la oku-buu-buu-ka

mu-na-dda wa mmwe? Ba mu-ki-sa a-ba-mwe-yu-na, ba mu-ki-sa a-ba-mwe-yu-na.

**Ekirango (Recitative)**

*Tenor*

A - jja ku - ba - ya - sa - ya - sa n'o - lu - ga o - lw'e - kyu - ma, a - ba - ku - tu - le obu - tu - ndu - tu - ndu,

ng'e - ki - bya e - ky'o - mu - bu - mbi. A - jja ku - baa - sa ng'e - ki - bya e - ky'o - mu - bu - mbi.

**MPONYA**

**Chorus XII**

Mpo - nya, mpo - nya aba-la-be ba-nge a-ba-nnu-mba, mpo - nya, mpo - nya aba-la-be ba-nge

a - ba-nnu-mba mpo - a - ba-nnu-mba Mpo - nya Mu-ka-ma wa-nge aba - ko - zi b'o-bu-bi, mpo -

nya Mu-ka-ma wa-nge aba - sa-jja b'o-mu-saa-yi, baa-ba-no ba-lii-mi - sa obu-la-mu bwa-nge.

Baa - ba - no b'a - maa - nyi ba - wo - nde - ra, ba - nee - to - lo - dde. Mu nze

te - mu - li ki - bi Mu - ka - ma wa - nge, Mu nze te - mu - li mu - sa - ngo, te - mu - li mu - sa - ngo.

Ba-nna-nga bu-so-mi bwa ddii-ni Mu-ka-ma oma - nyi ggwe. Ba-nna - nga ki-ga-mbo kyo, ne

ba - fu - bu - tu - ka oku - nnu - mba. Ti - we - ba - ka Mu - ka - ma wa - nge nzi - ru - ki - ri - ra. Ti - we - ba -



ka Mu-ka-ma wa-nge. Jja-ngu olwa-ne Mu-ka-ma wa-nge Ka-to-nda w'a-ma - ggye, Mu-ka-ma wa-nge,

*Solo*  
 jja-ngu olwa-ne. Ba-nnu-mba Mu-ka-ma wa-nge ba-nnu-mba A-nkuu-ma ye ggwe  
 Bo-nna ba-swa - le.  
 Ba - la - be ba - nge  
 Ba - me - ggu - ze eri

Zuu-ku-ka Mu-ka-ma wa-nge, zuu-ku-ka Mu-ka-ma wa-nge, zuu-ku-ka Mu-ka-ma

wa-nge ga-bo-ne-re - ze ama-wa-nga go-nna. To-ba-saa-si-ra, to-ba-saa-si-ra, to-ba-saa-si-ra

a-ba-sa-jja ab'e-nkwe, to-ba - saa-si-ra, to-ba - saa-si-ra, to-ba - saa-si-ra, to-ba - saa-si-ra a-ba-sa-jja

ab'e-nkwe to-ba-saa-si-ra Na-ye ggwe Mu-ka - ma o - ba-se-ke-re-ra, na -

ye ggwe Mu-ka-ma o - ba-se-ke-re-ra nnyo, o - ba-se-ke-re-ra. A - nti ama-wa-nga go-nna

to-ga-la-ba-mu ka bu - ntu si-ri-mba. A-yi obu-zi-ra bwa-nge, a-yi Ka-to-nda wa-nge; ki -

go kya-nge a-nkuu-ma Nnaa-ku-ssa-ko omwo-yo ggwe Mu-ka-ma wa-nge; nnaa-ku-ssa-ko omwo-yo.

Ggwe ku-saa-si-ra kwa-nge o-mpu-li-dde mu bu-yi-ni - ke n'o-nku-ba-gi - za. Ndi - yi-mba, ndi-yi-mba-nga

o-bu-yi-nza bwo Mu-ka-ma wa-nge, nze ndi-ja-gu - za ku ma-kya olw'o-bu-ya-mbi bwo. Ndi - bwo. O -

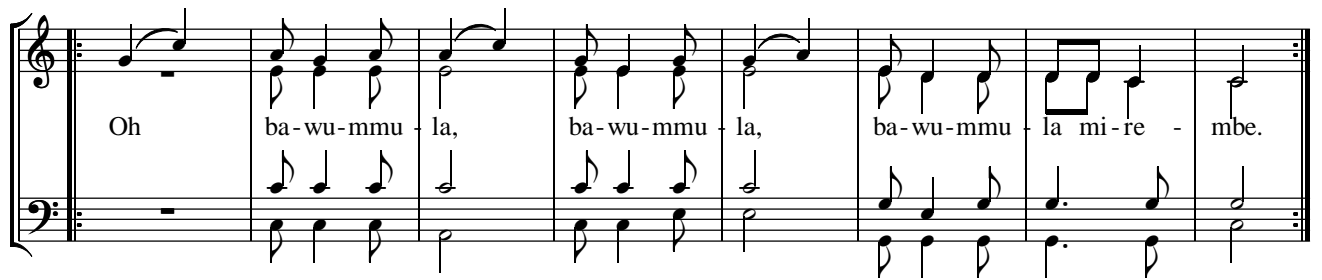
nfuu-ki-dde e - ki-go eki - nywe-vu. O - nfuu-ki-dde eki-ddu-ki-ro kya-nge. O - kya-nge. A -  
 yi obu-zi - ra bwa - nge nnaa - ku - yi - mbi-ra ku ndo - ngo Mu-ka - ma wa - nge,  
 nnaa-ku-yi-mbi-ra ku ndo - ngo, ki - go kya-nge. ngo, mu kwe-sii-ma ewa Ki-ta-ffe gy'a-li mu ggu - lu.  
 a - nsaa - si - dde.  
 nze mpa-ngu-dde.

### NZIKIRIZA MUKAMA WANGE

#### Akalowoozo (Aria)

##### Chorus

Nzi-ki - ri - za Mu-ka-ma wa-nge nga mu-la - mu. Ku lw'o-lu - va-nyu - ma na -  
 nge ndi-zuu - ki - ra mu ba - fu. Ndi-dda-mu na - te ne nya-mba-zi - bwa olu-su - su.  
 Ka-to - nda wa-nge ndi-mu-la - bi - ra nze mu mu-bi - ri gwa-nge gu - no.  
 Bee-sii - mye aba-fii - ra mu Mu-ka - ma ku - ba anti te - ba - zi - ki - ri - ra ku - ba anti  
 ba-wu-mmu la mi-re - mbe ku ba anti ba-wu-mmu la mi-re - mbe. ku mbe.



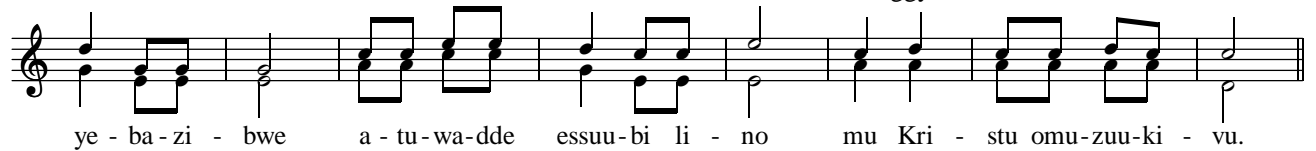
Oh ba-wu-mmu la, ba-wu-mmu la, ba-wu-mmu la mi-re - mbe.



E - bi - ru - ngi bye baa-ko - la bi - ba-go-be-re - ra, o - bu - la - mu bwa-bwe bu -



fuu - ka bu - fuu - si bu - fuu - ka bu - fuu - si te - bu - ba-ggyi - bwa - ko. Ka - to - nda



ye - ba - zi - bwe a - tu - wa - dde essuu - bi li - no mu Kri - stu omu - zuu - ki - vu.

*Soprano solo*




E - ki - bi, e - ki - bi kya - yi - ta mu mu-ntu omu ati. E - ki - bi



e - ki - bi kya-yi-ngi - ra e-nsi eno, mu kyo ne mu-jji-ra-mu ne wa-lu-mbe ata-yi-twa



n'a - bu - na ensi mu ba-ntu bo-nna. Mw'a-li bo - nna ba-yo - noo-na. Wa -



lu-mbe, wa - lu-mbe a - vu-dde wa atu - daa-za? Wa daa-za? O-ka-jja - dde mu nsi o - tu-ma-le -



wo! Ng'o-mu-sa-ngo gw'o-mu bwe gwa-tu-lee-te - ra aba-ntu o-mu-sa-ngo ffe-nna. Bwe ki-tyo na -



te o - mu o - mu - tuu - ki - ri - vu, a - ba - ntu ffe - nna y'a - tu - lee - te - ra oku - tu - ku - zi - bwa mu bu - la -

mu. Nga mu Ada - mu a - ba - ntu ffe - nna twa - fuu - ka ba - fu e - ra bwe ki - tyo mu

Kri - stu a - ba - ntu bo - nna ba - li - dda - mu obu - la - mu, ba - li - dda - mu obu - la - mu.

**Ekirango (Recitative)**

*Tenor*

A - ba - nge mba - buu - li - ra eki - ki - si - ddwa kye mu - ta - ma - nyi, ffe - nna tu - ge - nda ku - fa,

ffe - nna tu - ge - nda ku - fa. O - lu - li - gi - ra lu - ti, o - ku - te - mya n' o - ku - zi - bu - la

e - ngo - mbe enva - nyu - ma eri - vu - ga, dda - la engo - mbe yo ege - nda ku - vu - ga, a - ba - fu ne ba - zuu - ki - ra nga

ssi ba - ku - vu - nda, o - lwo na - ffe ne tu - fuu - ka ki - no eki - nda ki - rya - mba - la bu - ta - fa.

**WALUMBE**

**Choir XIII**

Wa - lu - mbe, Wa - lu - mbe Wa - lu - mbe nga to - kya - wa - za. Wa za.

Baa - ku - ma - la empa - pa - la Kri - stu bwe ya - va ema - go - mbe nga mu - la - mu, ya - ku - me -

gga. Ka - ti oli lu - ti - ndo lwe tu - yi - ta - ko o - ku - tuu - ka mu ki - tyi - bwa

kya Ki - ta - ffe, mu ku - sa - nyu - ka okw' o - lu - be - re - ra. Wa - lu - mbe nga tu - ku - wo -

nye, Wa - lu - mbe nga tu - ku - wo - nye e - mi - re - mbe. Wa mbe.

1. E - ngo - mbe eri - vu - ga, kya ma - ge - ro e - ngo - mbe eri - vu - ga a - ba - fu ne ba - zuu - ki - kya ma - ge - ro

ra nga ssi - ba - ku - vu - nda, ssi ba - ku - vu - nda, bo - nna ba - fuu - se. E - ki - vu -

nda kya - mba - dde eki - ta - vu - nda, ki - no eki - fa kya - mba - dde o - bu - ta - fa.

Ye - ba - le Ka - to - nda eya - tu - wa ne tu - lu - li - nya - ko mu Kri - stu Ye - zu Omwa - na we.

2. 'Nze ku - zuu - ki - ra, Nze bu - la - mu, a - nzi - ki - ri - za ne bw' a - li - fa a - li - ba mu - la - mu. Bu - li mu - la -

mu anzi - ki - ri - za, ta - li - fa, ta - li - fa emi - re - mbe. Ta - li - fa, ta - li - fa emi - re - mbe

gyo - nna; na - nge ndi - mu - zuu - ki - za, ndi - mu - zuu - ki - za ku lw' o - lu - va - nyu - ma.

**Kalwoozo (Aria)**

*Bass*

O - ba Ka - to - nda ali ku lu - dda lwa - ffe, a - ni oyo atwe - si - mba - ko?

O - ba Ka - to - nda ali ku lu - dda lwa - ffe, a - ni, a - ni oyo atwe - si - mba - ko?

A - ni ana - lu - mi - ri - za aba - lo - nde b' O - mu - ka - ma? A - nti y' a - ba - tu - ku - za,

y'a-ba-wo - le-re-za, y'a-sa-la omu - sa-ngo. A - ni abe-si-mba - ko? Kri-stu eya -

fa n'a-zuu-ki - ra, a - tu - dde ku gwa ddyo ogwa Ka - to-nda y'a-tu-w - le-re-za.

### AKALIGA AKATTIBWA

#### Chorus XIV

Nze Yo-wa - nna ndi mu ki - roo-to, nze-nna, ne mpu-li - ra eddo-boo-zi ly'O-mu-ka-ma oh, oh, oh,

o - tyo, Ba-ma-la-yi - ka obu-ta-ba - la abo, bo, bo, bo-nna, Na - mu-lo - ndo eba-li mu a,

maa-so, a, a - bo n'a - ba-ka - dde n'e - bi-ra - mu bo, bo, bo-nna, ne ba-vuu -

mya eddo-boo-zi bo, bo, bo-nna. Nze Yo-wa bo-nna bwe ba - ti: ba - ti Yee! Yee! Ka-li -

ga aka-tti-bwa ka - saa-ni - ra ki - tyi-bwa n'o-bu - yi-nza e - mi-re-mbe. dda-la emi -

re-mbe Ka-li re-mbe. A - ka-li - ga, A - ka-li - ga, a - ka-tti - bwa, a - ka-tti - bwa ka-saa-ni -

ra ka-saa-ni - ra, e - ki-tyi - bwa e - ki-tyi - bwa n'o-bu-yi - nza, n'o-bu-yi - nza

e - mi-re-mbe. Ka - saa-na ka - fu - ne, a - ma-ge-zi n'a-maa-nyi

n'o-ku-te-nde - bwa e-mi-re-mbe. E-bi-to-nde byo-nna m ggu-lu ne mu nsi,

n'e-yo mu nsi mu-nda, mu ga-ya-nja n'o-lu-ka-lu byo-nna bi - re-kaa-na, byo-nna bi - re-kaa-na.

A - mii - na amii - na  
A mii-na, a - mii - na amii-na, a mii-na, a - mii - amii-na

na ggwe wa-mma osaa - ni - dde. ggwe omu-wa-ngu - zi. ggwe wa-mma otu - bu - dde. ggwe atu - dde wa - ngaa - la. ggwe wa-mma owa - ngu - dde. ffe aba - zze twe - ya - nza. ffe aba - ntu twe - ya - nza.

ku nna-mu-lo - ndo, wa - mu n'a-ka-li - ga aka-tti - bwa tu - ba-gu-lu-mi - ze.

A - mii - na A - mii - na bu - si-nze A - mii - na

A - mii - na bu - si-nze A - mii - na wa - mma osaa-nye A - mii -

na, 6 - saa-ni-ra dda - la a - mii - na. O - lw'e - ki - tyi-bwa kyo sse - ri - mba a-mii-na lw'o - bu - ku - lu bwo sse - ri - mba o - lw'o - bu - yi - nza bwo n'a-maa - nyi lw'o - bu - lu - ngi bwo sse - ri - mba to - nda Lu - ga - ba twe - ya - nze

saa-ni - ra dda - la A - mii - na o - na. E - bi - to-nde byo-nna  
saa-ni - ra dda - la o -  
saa-ni - ra dda - la o -  
saa-ni - ra dda - la Ka -

mu ggu-lu ne mu nsi, n'e-yo mu nsi mu-nda, mu ga-ya-nja n'o-lu-ka-lu, byo-nna bi -  
 re-kaa-na, byo-nna bi - re-kaa-na. A - mii - na, amii - na A \_\_\_\_\_ mii-na  
 a - mii - na, amii-na, a \_\_\_\_\_ mii-na a - mii - na amii-na Ggwe omu-wa-ngu - zi.  
 Ggwe omu-wa-ngu - zi.

### KATONDA ALAMULA

#### Chorus XV

A - tu-dde a - tu-dde mi-re - mbe Mu-ka-ma wa-ffe, a - tu-dde a - tu-dde mi-re - mbe Mu-ka-ma  
 y'a-fu-ga. y'a-fu-ga Mu-ka-ma y'a-fu-ga, Mu-ka-ma y'a-fu-ga a - tu-dde mi-re -  
 mbe. E-nsi yo-nna ke ja-gu - ze mu maa-so ge awo. E-nsi yo-nna ke ja-gu -  
 ze mu maa-so ge awo. E - bi - zi-nga ka bi-ja-gu - ze mu maa-so ge awo. E - bi - zi-nga  
 ka bi-ja-gu - ze, bi-ja-ga - nye, bi-sa-nyu - ke nnyo. E - bi - re ne ka-zi-gi-zi - gi bye bu-ngu -  
 lu-dde ebyo na-mu-lo-ndo ye. O-bu-tuu-fu n'o-bu-ku-mu, e-nte-bbe ye kwe-nywe-re - dde Mu-ka-ma  
 wa-nge. O-mu-li-ro gwe gu-mu-ku - le-mbera ne gwo-kya a - ba-la-be be. O -



kwe-too-loo - la ente-bbe ye ey'o-bu-la-mu - zi, e-bi-mya-nso bye bi-mu-li - sa enku-lu-ngo y'e-nsi.

E-nsi ne-tu-nuu-li - ra n'e - ka-nka-na. Mu maa-so g'O-mu-ka-ma e-nso-zi zi - fuu-ka nvu -

mbo zi - ggwe-re-ra mu maa-so ge e-nso-zi zi - fuu-ka nvu - mbo mu maa-so ge zi - ggwe-re-ra.

E-ggu-lu li - ra-ngi-ri-ra o-bu-tuu-fu bwo-mu-ka-ma wa-nge, n'a-ma-wa-nga go-nna ne

ga-tu-nuu-li - ra eki-tyi-bwa kyo, a-be-wa-ni - ka n'a-ba-si-nza ebi-ta-li Ka - to-nda o -

lwo ne ba-swa - la. Ba-lu-baa-le bo-nna nga bo-nna be-ya - la mu maa-so ge. Si-o - ni, Si-o -

ni n'a-wu-li - ra n'a - sa-nyu - ka, n'e-bi-bu-ga bya Yu-da ne bi-sa-nyu - ka oku-ka-ma - la o -

lw'e-nna-mu-la yo Mu-ka-ma wa-nge. A-nti Ggwe a-yi Mu-ka - ma o-ssu-kku-lu - mye e-nsi yo

yo-nna. Mu-ka-ma ky'a-wa aba - bi n'a-kuu-ma emyo-yo gy'A-ba - tuu-ki-ri-vu. A-taa-sa

emyo-yo gy'a-ba - be n'a-ba-wo-nya mu mi-ko-no gy'a-ba-bi. E-ki - ta-ngaa-la

n'e-ki-vii-ra - yo o-mu-tuu - fu, n'a-ba - te-ree - vu mu mi-ti - ma ne ba-bee-ra



mu ssa-nyu ezzi - bu. A - ba-tuu-fu mwe-nna mmwe mu-sa-nyu-ki - rae mu Mu-ka - ma,



mu-mu-ku-bi - re enna-nga, mu-gu-lu-mi - ze e - ri-nnya lye ettu-ku-vu, mu-mu-yi-mpi - re ku ndo -



ngo, zi - tu-ggye, mu-mu-ku-b - re ento-ngoo - li, e - wuu-me Al-le-lu-ia al -



le - lu - ia, al - le - lu - ia Lu-wa-ngu - la afu-ga. Al - le - lu - ia, al - le - lu - ia, Lu-wa-ngu - yo - nna



a - fu - ga. a - fu - ga Lu-wa-ngu - la, Lu-wa-ngu - la afu-ga  
a - tu-dde mi-re - mbe a - tu-dde mi-re - mbe



Al - le - lu - ia, al - le - lu - ia, Al - le - lu - ia, al - le - lu - ia, al - le - lu - ia Lu-wa-ngu - la afu-ga.



Lu-wa-ngu - la afu-ga, Lu-wa-ngu - la afu-ga. Mu-ka-ma afu - ga a - ba - ntu ba-ka-nka - Yee! yee!



na, a - tu-dde ku nte - be e - nsi ye eyu-guu - ma, Ba-ke-ru-bi - ni ne ba-mu - si-nza.



A - su - kku-lu - mye mu ba-ntu bo-nna, a - su - kku-lu - mye ebi-to-nde byo-nna, mu-ku-lu dda -



la nnyo, e - ri-nnya lye ekku - lu e - ri-tii - sa ba-li - te-nde, ba - li - gu-lu-mi - ze-nga, ba -



li - gu - lu - mi - ze-nga, ba - li - gu - lu - mi - ze emi-re-mbe gyo-nna. Ba-li - tye-nga,

ba-li - si-nze, e - ri-nnya lye ettu-ku-vu ba-li - si-nze bo-nna, ba - li-gu-lu-mi -

ze. O - w'o-bu-yi-nza aya-ga-la bu - tuu-fu, o - w'o-bu-yi-nza aya-ga-la afu -

ge. Ggwe wa - ssa - wo ebi-tuu-fu ku nsi, Ggwe wa - ssa - wo ebi-tuu-fu n'o-bi - te-ree -

za nnyi-ni, mu Ya-ko-bo n'o-ko-ze-sa o - bu-tuu-fu n'o-bu-ku-mu. Mu-gu-lu-mi -

ze Ka-to-nda wa-ffe, mwe-ya-le ku mu-zi-zi - ko o - gw'e-bi-ge-re bye omu-tu-ku -

vu dda-la. Mwe-ya-le, mwe-ya-le, mu-gu-lu-mi - ze Omu-ka-ma. Mu-ka-ma Ka - to-nda ow'o-bu -

yi-nza. Mu-gu-lu-mi - ze Ka-to-nda wa-ffe, mwe-ya-le ku lu-so-zi lwe olu-tu-ku -

vu dda-la. Mwe-ya-le ku mu-zi-zi - ko gw'e-bi-ge - re bye, ku lu-so-zi lwe olu-tu-ku -

vu. Ku - ba-nga Mu-ka-ma Ka - to-nda, ku - ba-nga ye mu-tu-ku - vu dda-la. Ku vu dda-la Mu -

tuu-ki-ri-vu Mu-ka-ma Ka - to-nda. Mu - tuu-ki-ri-vu awa-nga-mye Ka - to-nda, a -

saa-ni-ra afu - ge, a - saa-ni-ra afu - ge Ka-to-na wa-ffe. A - saa-ni-ra afu -

ge, a - saa-ni - ra afu - ge e - mi - re - mbe gyo - nna n'e - ki - tyi - bwa kye.

**TE DEUM: KATONDA TUKUGULUMIZA**

Ggwe, Ggwe, Ggwe Ka - to-nda tu - ku-gu-lu-mi - za, Ggwe Ka - to-nda tu - ku-gu-lu-mi - za

Ggwe Ka - to-nda tu - ku-gu-lu-mi - za, tu - ku-gu-lu-mi - za, Ki - ta-ffe ow'e-mi -

re-mbe gyo - nna, e - nsi yo-nna, yo-nna e - vu-nna-me eku - si-nze. Ggwe mu - tuu-ki-ri-vu

Mu-ka-ma Ka - to-nda, Ggwe mu - tuu-ki-ri-vu Mu-ka-ma Ka - to-nda. O-li wa bu - yi-nza nnyo

Mu-ka-ma Ka - to-nda. Ggwe mu - tuu-ki-ri-vu Mu-ka-ma Ka - to-nda, tu - te-nda, tu - te-nda, tu -

ku-gu-lu-mi - za, tu - te-nda, tu - te-nda, tu - ku-gu-lu-mi - za. Tu za sse-bo. Ba-ma-la-yi -

ka bo-nna ba-ku-te-nda bo-nna. E-ggu-lu n'a - maa-nyi ga-lyo go-nna li - ku-te-nda

Ggwe ali-wo Ba-ke-ru-bi - mu ne Ba-sse-ra-fi - mu Ggwe gwe bee-ko - la obu-ta-ma - la nga ba-yi -

mba: Mu - tuu-ki-ri-vu, mu - tuu-ki-ri-vu Mu-ka-ma Ka - to-nda, mu - tuu-ki-ri-vu mu - tuu-ki-ri-vu Ka -

to-nda ow'o-bu - yi-nza. Mu yi-nza. E-ki-tyi-bwa kyo ki - jju - dde sse-bo e-ggu-lu n'e - nsi;



e - ki - tyi-bwa kyo ki - jju - dde sse-bo, e-ggu-lu n'e - nsi. E - ki - bi-nja ky'A-ba-tu-me



ki-ku-te-nda Ddu-nda. A - ba - la-nzi ab'e-tte-ndo ba-ku-te-nda bo-nna, e - ry'A-ba-ju - li -



zi eggye eri - te - ma - ga - na ennyo, li - ku - te - nda Ddu-nda o - bu - ta - ma - la. *D.S.*


*Biggu*



Mu nku-lu-ngo y'e - nsi, mu nku-lu-ngo y'e - nsi w'e-fa eko - ma, E - kle - zi -



ya omu-tu-ku - vu gy'a-bee - ra, Ggwe Ki-ata - ffe, Ggwe Ki-ta - ffe o - w'o-bu-ku -



lu obu-ta - ge-re-ka a-ku-te - nda, wa-mu n'O - mwa-na wo o-mu-tyi - bwa gwe wa-zaa-la ye-kka



oyo, wa-mu ne Mwo-yo Mu - tuu-ki-ri - vu omu-ku-ba-gi - za a-ba-te-nda ng'a-ga - mba:

*a tempo*



Ggwe Ka - to-nda tu - ku-gu-lu-mi - za, Ggwe Ka - to-nda tu - ku-gu-lu-mi - za, tu -



ku-gu-lu-mi - za, tu - ku-gu-lu-mi - za Ka - to-nda ow'o-bu - yi-nza tu - ku-gu-lu-mi - za.



E-nsi yo-nna, yo-nna e - vu-nna-me eku - si-nze. Ggwe Ye-zu Kri - stu Ka - ba-ka ow'o-bu - yi-nza, O -



mwa-na wa Ki - ta-ffe omu, to-li-na ma - soo-ka, bwe wa-tee-sa aba-ntu ffe oku-tu-lo-ko - la,



te-we-nyi-nya - la, te-we-nyi-nya - la e-nda y'o-mu - bii-ki-ra. Ggwe eya-wa-ngu - la olu-mbe



n'o-ggu-la-wo, Ggwe n'o - ggu-la - wo Sse-bo obwa-ka-ba-ka obw'e-ggu-lu.



Ggwe atu-dde, Ggwe atu-dde ku gwa ddyo gwa Ki - ta-ffe, tu-kki-ri-za,



tu-kki-ri-za, tu-kki-ri-za ng'o-li-dda oku-tu-la-mu - la. Tu - kwe-ga-yi-ri -



dde, tu - kwe-ga-yi-ri - dde, tu - kwe-ga-yi-ri - dde, a - ba-ddu bo tu-ju-ne - nga, tu-ju-ne -



nga, tu - kwe-ga-yi-ri - dde, be-wa-nu-nu - la tu - kwe-ga-yi-ri - dde, be-wa-nu-nu - za omu-saa-yi



gwo ba-ddu - ki-ri - re Sse-bo, ba-ddu - ki-ri - re, ba - we oku-me-nye - rwa mu ba - tuu-ki - ri - vu



bo, mu ba - tuu-ki-ri-vu bo, mu ba - tuu-ki-ri-vu bo, mu ki-tyi-bwa eky'o-lu-bee-re - ra.

### **OLUYIMBA LWA JUDITA**



Twa-nga olu - yi-mba o - lwa Ka-to-nda wa-nga ku nto-ngoo-li, twa-nga olu - yi-mba o -



lwa Ka-to-nda wa-nga ku nna-nga. ku nna-nga, ku nna-nga olwa Ka-to-nda



wa-nga ku nna-nga. Twa-nga olu - yi-mba ku nto-ngoo-li, twa-nga olu -

yi-mba ku nna-nga. Twa-nga olu - yi-mba o - lwa Ka-to-nda wa-nge

twa-nga olu - yi-mba ku nto-ngoo-li; ku ba-nga wa bu - yi-nza byo - nna dda-la bi -

bye byo - nna dda-la abi - si-nga. A - saa-na kwe-ba - za wa-mma ku - ba-nga y'a-bi - to-nda e -

bi-ntu by'o-la - ba byo - nna dda-la abi - si-nga. a - saa-na kwe-ba - za, a - saa-na kwe-ba -

za wa-mma. Tu-mu-yi-mbi - re a Nja ku-yi-mbi - ra Omu-ka-ma olu-yi-mba olu-ggya.  
 Tu-mu-ku - li - se  
 Ye ya-tu - ko - la  
 Ye atu-wa-ngu - za

Nja ku-yi-mbi - ra Omu-ka-ma olu-yi-mba olu-ggya, o - li wa bu - yi-nza.

O - li wa ki - tyi-bwa, O - li na-nta - me-ggwa, O - li na-nta - me-ggwa O - li na-nta -

me-ggwa Ka - to-na w'a-ma - ggye, Ka - to-nda w'a-ma - ggye ky'e-kyo asaa-na kwa-ga - la.

n'e-bi - to-nde byo ku nsi bi - ku - go-nde - ra ne bi-baa - wo ebi-to-nde  
 bwewa - o - ge - ra

byo-nna bwe wa-yo-ge - ra, ne bi-baa - wo ebi-to-nde byo-nna bwe wa-yo-ge - ra ne bi-baa -

wo, ne bi-baa - wo, ne bi-to - ndwa. Bwe wa-si-ndi - ka Mwo-yo ne bi-to -  
bwe wa-yo-ge - ra, bwe wa-yo-ge - ra,

ndwa. Te-wa - li, te-wa - li, te-wa - li ki-to-nde kya-wa-ga-nyi - ra eddo-boo-zi lyo. Te-wa -

li ki-to-nde kya-wa-ga-nya - la. La-ba enso - zi zi - jja ku-nye-nye - bwa. E - yo ku nto -

bo ama - zzi ga-na-zi - nye-nya, ga-na-zi - nye-nya, ga-na-zi - nye-nya ama - zzi ga-na-zi -

nye-nya. Mu maa-so go e-nja-zi zi - fuu-ka nvu - mbo, e-nja-zi zi - fuu-ka nvu - mbo Mu-ka-ma

wa-nga. E-nja-zi zi - fuu-ka nvu - mbo kyo - kka ggwe aba-ku - tya o - ba-saa-si - ra,

o - ba-saa-si - ra n'e-ki-ta-mpi - ro ekyo-kye kye ba-ku - wa ggwe, n'o-ki-kki-ri - za.

Mu-ka-ma Ka - to-nda a - te-nde-re-ze - bwe-nga, Mu-ka-ma Ka - to-nda a - te-nde-re-ze -


bwe-nga. A-nji-ri-dde n'e-ki-sa, a - te-nde-re-ze - bwe-nga, a-nji-ri-dde n'e-ki-sa a -

te-nde-re-ze - bwe-nga, a-nkuu-mye nze, a - te-nde-re-ze - bwe-nga, a-nkuu-mye nze a -


te-nde-re-ze - bwe-nga, a - te-nde-re-ze - bwe-nga, a - te-nde-re-ze - bwe.

A-fu - ge-nga  
si-nze





ffe aba-ntu nga tu-ko-nko-na, a-fu - ge-nga ng'e-nsi yo - nna eju-gu-mi - ra. tu-mu - ra.  
tu-mu - te-nde



Tu-gu-lu-mi - ze Omu-ka-ma ei-nnya lye kku - lu nyo, e - ri-nnya lye kku - lu lya ntii - sa. O -



w'o-bu-yi-nza aya-ga-la bu - tuu-fu. Mu Ya-ko-bo by'a-ko-la bi - tuu-fu.



Mu-gu-lu-mi - ze Omu-ka-ma aba-to-nde mwe-nna, mwe-ya-le wa - no ku mu-zi-zi -



ko gw'e - bi-ge - re bye. Mu-gu - u - mi - ze Omu-ka-ma Ka - to-nda w'a-ma - ggye.



Mwe-ya-le, mwe-ya-le ku lu-so-zi lwe olu-tu-ku - vu, mu - si-nze Ka-to - nda o-mu -



tuu - ki-ri-vu ow'a - maa - nyi omu - zi - ra - ki - sa. A - mii - na, o-mu - tuu - ki-ri-vu



omu - zi - ra - ki - sa A - mii - na o-mu - tuu - ki-ri-vu omu - zi - ra - ki - sa.