

**MISSA**  
**511. MISSA HOSANNA**  
**SAASIRA**

Ben J. Jjuuko

A - yi Mu-ka - ma      A - yi Mu-ka-ma      A - yi Mu-ka -  
 A - yi Mu-ka-ma      A - yi Mu-ka - ma

*Fine*

ma.      A - yi Mu - ka - ma tu - saa - si - re.  
 A - yi Mu - ka - ma

Ggwe Kri - stu tu - saa - si - re,      Ggwe Kri - stu tu - saa - si - re  
 Ggwe tu - saa - si - re      Ggwe tu - saa - si -

*DC. al Fine*

Ggwe Kri - stu tu - saa - si - re      Ggwe Kri - stu tu - saa - si - re.  
 re      Ggwe tu - saa - si - re

**EKITIIBWA**

*Leader:*

E - ki - tii - bwa ki - be eri Ki - ta - ffe e - yo mu ggu - lu.

*Chorus:*

Ne mu nsi yo - nna ki - be bwe ki - tyo,      ne mu nsi yo - nna ki - be bwe ki - tyo.

Refrain:



Tu-ku-te - nda ffe tu-ku-si - nza tu - ku-gu-lu-mi - za tu - ku-ssaa - mu e - ki - tii-bwa.



1. Bye wa-ko-la byo-nna nga bya ki - tii-bwa, bya ki - tii-bwa nnyo we - ba - le.



2.Ggwe Mu-ka-ma Ka - to-nda Ka-ba-ka ow'o-mu ggu - lu Pa-tri o-mu - yi-nza wa byo - nna.



3.Ggwe Mu-ka - ma o - mwa - na a - zaa-li-bwa omu ye - kka Ye - zu Kri - stu.



4. A - yi Mu-ka-ma Ka - to-nda, A - ka-li - ga ka Ka - to-nda O-mwa - na wa Pa-tri.



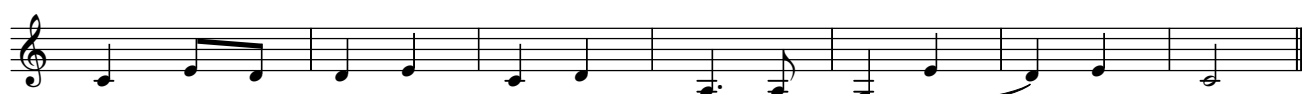
5.Ggwe aggya-wo ebi - bi by'e - nsi tu-saa-si - re, Ggwe aggya-wo ebi - bi by'e - nsi wu-li - ra o - kwe-ga-yi-ri - ra kwa - ffe.



6.Ggwe atu - dde ku gwa ddyo ogwa Ki-ta - ffe, Ggwe atu - dde ku gwa ddyo tu-saa-si - re.



7. Ku - ba - nga ggwe Mu - tuu - ki - ri - vu we - kka, Ggwe Mu-ka - ma we - kka



8.Ggwe ossu - kki - ri - dde we - kka ggwe Ye - zu Kri - stu.



9. Wa-mu ne Mwo-yo Mu - tuu - ki - ri - vu, wa - mu ne Mwo-yo Mu - tuu - ki - ri - vu



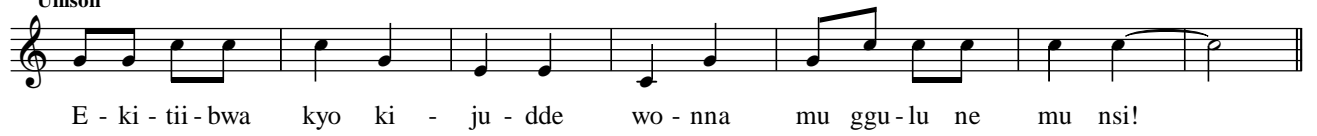
10 Mu ki - tii - bwa e - kya Ka - to - nda Ki - ta - ffe A - mii - na.

**MUTUUKIRIVU**

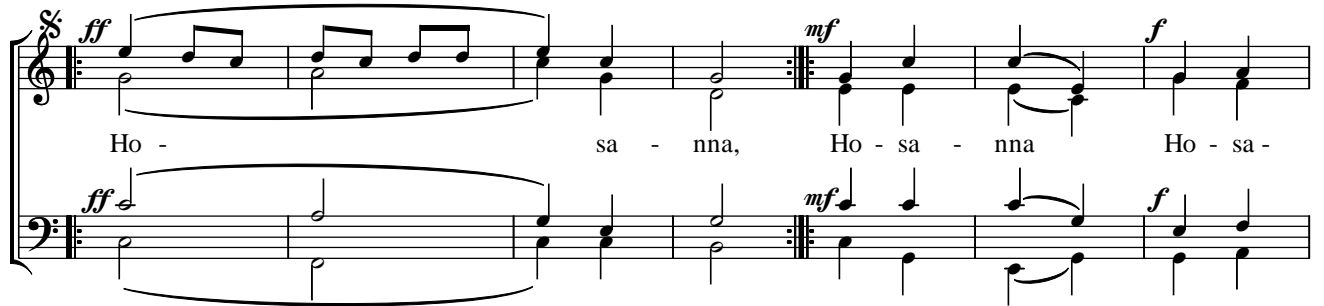


Mu - tuu-ki-ri - vu oyo mu - tuu-ki-ri - vu, mu - tuu-ki-ri - vu nnyo Ka - to-nda w'a-ma - ggye.

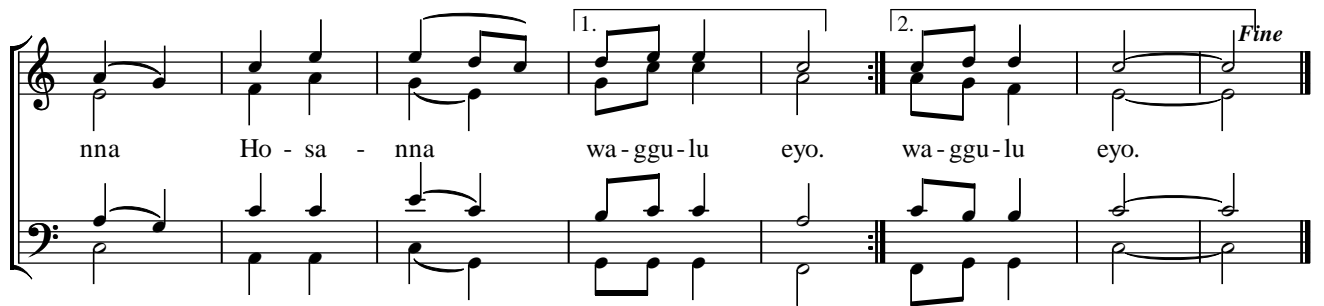
Unison



E - ki - tii - bwa kyo ki - ju - dde wo - nna mu ggu - lu ne mu nsi!



Ho - sa - nna, Ho - sa - nna Ho - sa -

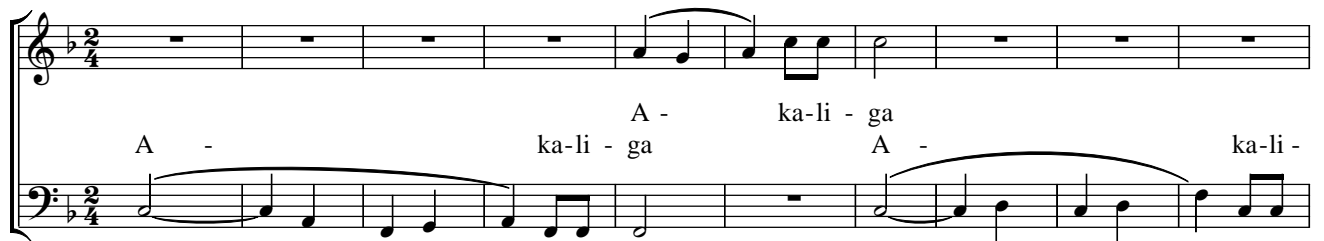


nna Ho - sa - nna wa - ggu - lu eyo. wa - ggu - lu eyo.

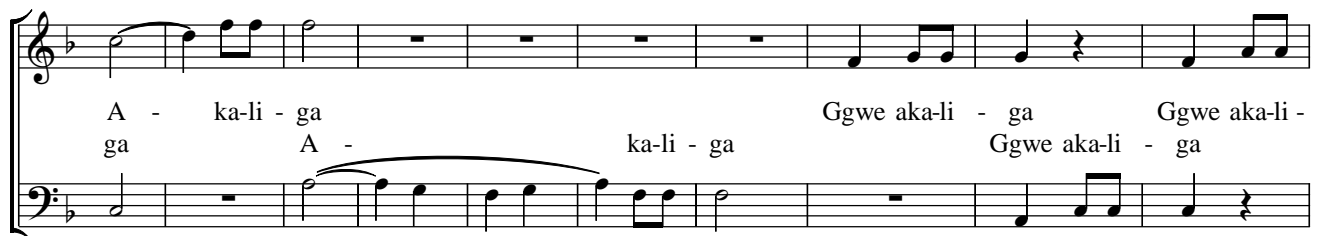


O - yo, o - yo a - jja mu linnya ly'O - mu-ka-ma a - te-nde-re-ze - bwe, a - te-nde-re-ze - bwe.

AKALIGA



A - ka-li - ga A - ka-li - ga A - ka-li -



A - ka-li - ga ga A - ka-li - ga Ggwe aka-li - ga Ggwe aka-li - ga



ga Ggwe akka-wo ebi - bi by'e - nsi tu-saa-si - re Ggwe aka-li - ga Ggwe aka-li - ga

Ggwe aka-li - ga                      Ggwe aggya-wo ebi - bi by'e - nsi, tu - we emi - re - mbe.  
ga                      Ggwe aka-li - ga

*retard.*

## 512. MISSA MUMUTENDEREZE

### SAASIRA

Fr. James Kabuye

*Moderato*  
*mf*

A - yi Mu-ka-ma tu-saa-si - re                      a - yi Mu-ka-ma tu-saa-si - re                      si - re  
A - yi                      yi                      Mu - ka-ma                      o - tu - saa -                      si - re

*mf*

A - yi Mu - ka - ma tu - saa - si - re o -

*rit.*                      *p*

a - yi Mu-ka-ma tu-saa-si - re.                      A - yi Kri-stu tu-saa-si -                      a - yi Kri-stu tu-saa-si -  
tu - saa - si - re.                      re                      a - yi Kri - stu  
tu - saa - si -

*rit.*                      *p*

tu - saa - si - re.                      re                      o - tu - saa - si -

*f*

re                      a - yi Kri-stu tu-saa-si - re.                      A - yi Mu-ka-ma tu-saa-si - re  
tu - saa-si-re.                      re                      A - yi                      Mu - ka - ma tu -

*f*

re                      o - tu - saa - si - re.                      A - yi Mu-ka-ma tu-saa-si - re o - tu - saa -

*rit.*

a - yi Mu-ka-ma tu-saa-si - re                      a - yi Mu-ka-ma tu-saa-si - re.  
a - yi Mu-ka-ma tu-saa -                      si - re                      tu - saa - si - re.  
saa - si - re                      tu - saa - si - re.

si - re                      o - tu - saa - si - re.

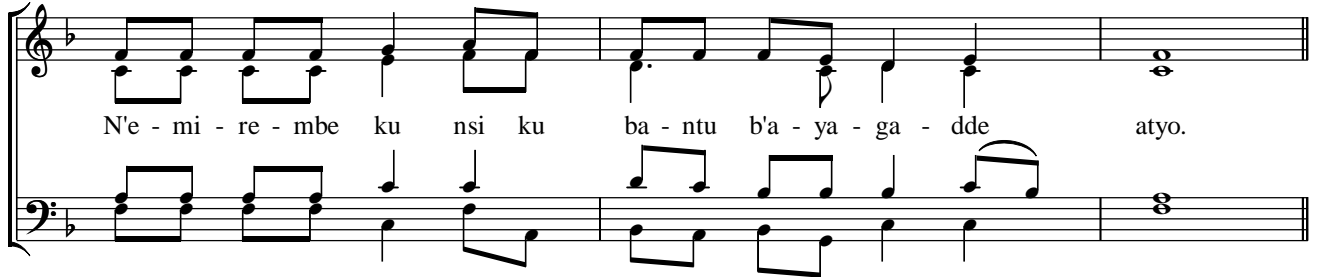
# EKITIIBWA

## Recitative

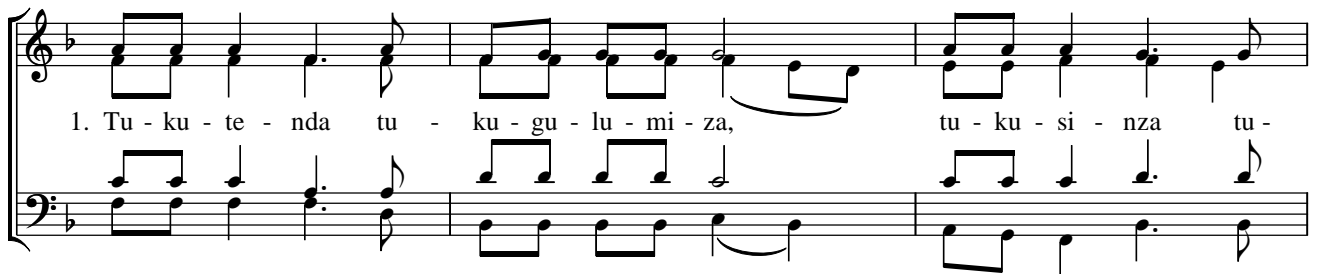


E - ki - tii - bwa ki - be mu ggu - lu eri Ka - to - nda

## Refrain 1



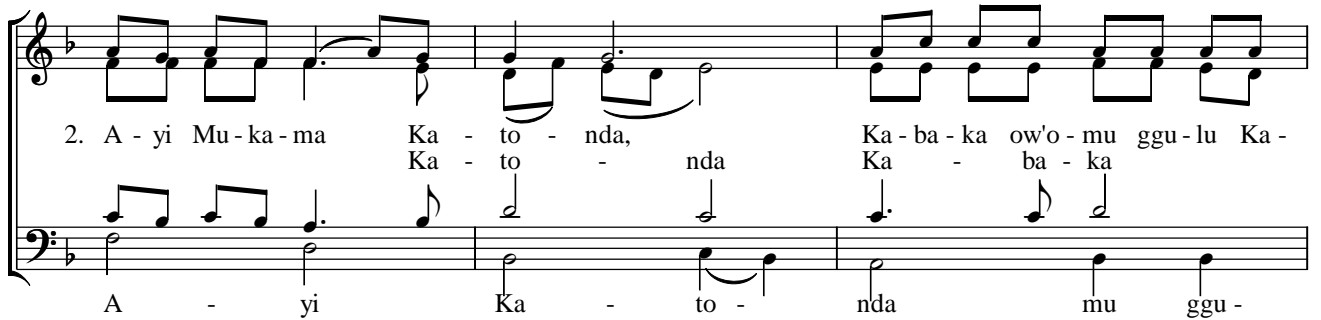
N'e - mi - re - mbe ku nsi ku ba - ntu b'a - ya - ga - dde atyo.



1. Tu - ku - te - nda tu - ku - gu - lu - mi - za, tu - ku - si - nza tu -

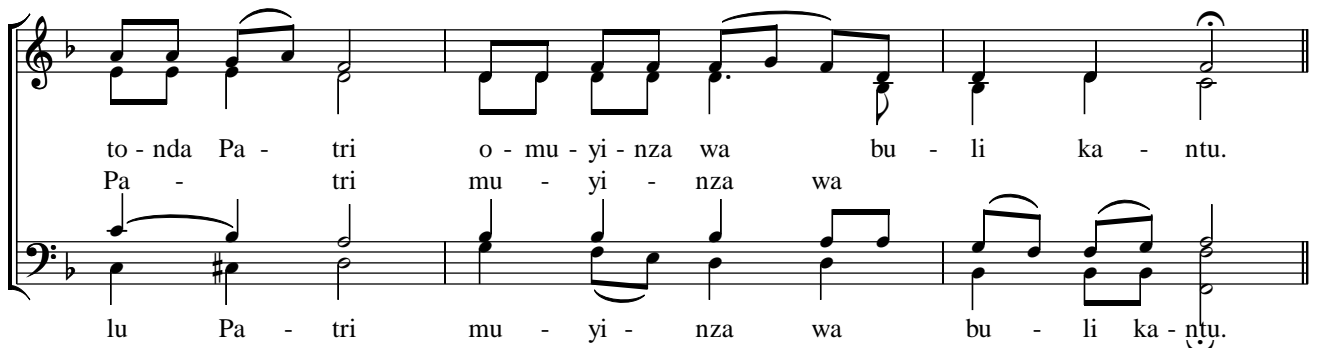


ku - ssaa - mu eki - tii - bwa; bye wa - ko - la bya ki - tii - bwa nnyo we - ba - le.



2. A - yi Mu - ka - ma Ka - to - nda, Ka - ba - ka ow'o - mu ggu - lu Ka -  
Ka - to - nda Ka - ba - ka

A - yi Ka - to - nda mu ggu -



to - nda Pa - tri o - mu - yi - nza wa bu - li ka - ntu.  
Pa - tri mu - yi - nza wa

lu Pa - tri mu - yi - nza wa bu - li ka - ntu.

3. A-yi Mu-ka-ma Mwa-na a-zaa-li-bwa omu ye - kka Ye-zu Kri - stu. A-yi Mu-ka-ma Ka -  
A - yi Mwa - na ye - kka Ye-zu Kri - stu A - yi Ka -

to - nda A - ka - li - ga ka Ka - to - nda o - mwa - na wa Pa - tri.  
to - nda

**Bass solo**

4.Ggwe aggya - wo ebi - bi by'e - nsi tu - saa - si - re

Ggwe aggya - wo ebi - bi by'e - nsi kki - ri - za o - kwe - ga - yi - ri - ra kwa - ffe.

**Refrain 2**  
Saa - si - ra saa - si - ra Ggwe omu - saa - si - zi.  
Saa - si - ra

5.Ggwe atu - dde ku gwa ddyo ogwa Pa - tri tu - saa - si - re.  
Ggwe atu - dde tu - saa - si - re

6. Ku - ba - nga Ggwe mu - tuu - ki - ri - vu we - kka, Ggwe Mu - ka -  
Ggwe mu - tuu - ki - ri - vu we - kka, Ggwe Mu - ka -

ma we-kka, Ggwe ossu-ki-ri-dde we-kka Ye-zu Kri-stu.  
we-kka Ggwe ossu-ki-ri-dde

7. Wa-mu ne Mwo-yo Mu-tuu-ki-ri-vu, mu ki-tii-bwa kya Ka-to-nda  
A-mii-na.

nda Pa-tri. A-mii-na.

**MUTUUKIRIVU**

Moderato *mf*  
Mu-tuu-ki-ri-vu Mu-tuu-ki-ri-vu Mu-tuu-ki-ri-vu

tuu-ki-ri-vu O-mu-ka-ma Ka-to-nda w'a-ma-ggye.  
vu O-mu-ka-ma Ka-to-nda w'a-ma-ggye.

*a tempo*  
E-ki-tii-bwa kyo ki-bu-ka-dde e-ggu-lu n'e-nsi e-ki-tii-bwa kyo ki-bu-ka-dde  
*mf* ki-bu-ka-dde

e - ggu-lu n'e - nsi e - ggu-lu n'e - nsi. Ho-sa- nna wa- ggu -  
 eggu-lu n'e-nsi, e - ki-tii-bwa kyo ki-bu-ka-dde e-ggu-lu n'e - nsi. Ho - sa- nna wa

lu eyo, Ho-sa- nna Ho-sa- nna wa-ggu- le eyo.  
 ggu-lu eyo Ho - sa - nna Ho-sa- nna wa - ggu - lu e - yo.

Moderato *mf* *f* *ff* *D.S. al Fine*  
 O - yo ajja mu li - nnya ly'O-mu-ka - ma, a - te-nde-re-ze - bwe a - te-nde-re-ze - bwe.

**AKALIGA**

Largo *mf* *f* *dolce*  
 A - ka-li - ga ka Ka - to-nda Ggwe aggya - wo ebi-bi by'e - nsi tu-saa-si - re. A - ka-li -  
 tu - saa - si - re

ga ka Ka-to-nda Ggwe aggya-wo ebi - bi by'e-nsi tu-saa-si-re. A - ka-li-ga ka Ka -  
 ebi-bi by'e - nsi tu - saa - si - re.



*f*

to - nda Ggwe aggya - wo ebi - bi by'e - nsi tu - we emi - re emi - re - mbe. mbe.

**513. MISSA OSSUKKULUMYE  
SAASIRA**

Fr. James Kabuye

A - yi Mu-ka - ma saa - si - ra, a - yi Mu-ka - ma saa - si - ra

saa - si - ra saa - si - ra

a - yi Mu-ka - ma a - yi Mu-ka - ma a - yi Mu-ka - ma saa - si - ra.

a - yi Mu-ka - ma a - yi Mu-ka - ma

A - yi Kri - stu saa - si - ra saa - si - ra A - yi Kri - si -

saa - si - ra saa - si - ra

stu ra saa - si - ra saa - si - ra, saa - si - ra.

saa - si - ra saa - si - ra

A - yi Mu-ka - ma a - yi Mu-ka - ma a - yi Mu-ka - ma saa - si - ra saa - si - ra.

saa - si - ra saa - si - ra saa - si - ra saa - si - ra.

## EKITIIBWA



### Refrain 1

N'e-mi-re-mbe ku nsi eno, ku ba-ntu b'a-ya - ga - dde atyo.  
n'e-mi-re-mbe ku nsi eno

1. Tu-ku-te - nda tu - ku-gu-lu-mi - za, tu-ku-si - nza ffe tu-ku-wa eki - tii-bwa  
tu-ku-te - nda tu - ku-gu-lu-mi - za tu-ku-si - nza

bye wa-ko - la bye wa-ko - la bya ki-tii-bwa we-ba-le we-ba-le we-ba-le dda - la.  
bye wa-ko - la bya ki-tii-bwa nnyo

2. A - yi Mu-ka - ma Ka - to - nda ka - ba - ka ow'o - mu ggu - lu Ki -  
Ka - ba - ka omu - ku - lu mu ggu - lu Ki -

ta - ffe ow'o - bu - yi - nza, o - mu - yi - nza wa byo - nna Mu-ka - ma Ka - to - nda.

3. A - yi Mu - ka - ma Ggwe omwa - na a - zaa - li - bwa omu ye - kka Ye -

zu omu - saa - si - zi Ye - zu Kri - stu omu - wa - ngu - zi.

4. A - yi Mu - ka - ma Ggwe aka - li - ga a - ka - li - ga  
Ggwe aka - li - ga aka - tti - bwa

Ggwe a - ka Ka - to - nda O - mwa - na wa Ki - ta - ffe mwa - sa - nyu - ki - ra.  
A - ka - li - ga Ggwe O - mwa - na

**Unison**

5. Ggwe aggya - wo ebi - bi tu - saa - si - re, Ggwe aggya - wo ebi -

bi wu - li - ra okwe - ga - yi - ri - ra kwa - ffe

**Refrain 2**

Mu - ka - ma wa - ffe Saa - si - ra saa - si - ra saa - si - ra aba -

daa - ga, saa - si - ra saa - si - ra saa - si - ra aba - bo.

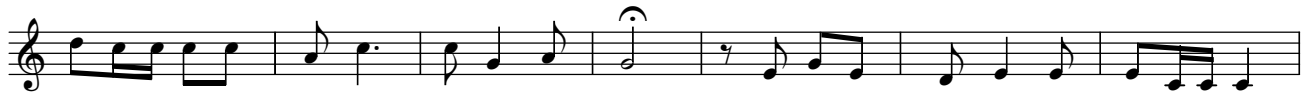
6. Ggwe atu - dde ku gwa ddyo gwa Ki - ta - ffe, gwa Ki - ta - ffe Ggwe

atu - dde ku gwa ddyo ogwa Ki - ta - ffe, Kri - stu tu - saa - si - re.

Unison



7. Ku - ba ggwe mu-tuu-ki-ri - vu we - kka, ku - ba ggwe Mu-ka - ma anti we - kka we - kka ggwe



o - ssu-ki-ri-dde byo-nna Ye-zu Kri - stu. wa-mu ne Mwo-yo Mu - tuu-ki-ri-vu,



wa-mu ne Mwo-yo Mu - tuu-ki-ri-vu mu ki - tii-bwa ekya Ki - ta - ffe mu ggu-lu.

A - mii - na ki - be ki - tyo a - mii - na *f* A - mii - mii -

na ki - be ki - tyo A - mii - na.  
na ki - tyo ki - be ki - tyo A - mii - na.

**NZIKKIRIZA**

(Pentatonic)

Refrain: Nzi-ki - ri - za Ka-to - nda omu nze e - ya-ko - la eggu-lu n'e - nsi

e - bi-ra-bi - ka n'e - bi-ta-la-bi - ka Ye Ka-to - nda omu nna-ba - sa - twe.  
Ye Ka - to - nda omu



1. Taa - ta omu - yi - nza mu - kki-ri - za n'O-mwa-na we omu gw'a-zaa - la

e - ki - ta - ngaa - la kya - va mu ye, ng'e - mi - re - mbe gyo - nna te - gi - nna - ba - lwa.

2. Y'a - zaa - li - bwa bu - zaa - li - bwa ye te - ya - to - nde - bwa, Ye Ka - to - nda Mwa - na

eya - kki - ri - ra; ng'a - va mu ggu - lu eyo a - tu - lo - ko - le, mu - bi - ri y'a -

gu - fu - na mu Ma - ri - a omu - bee - re - re - vu. N'a - fuu - ka omu - ntu. *rit.*

3. Y'o - yo eya - ko - me - re - rwa ku lwa - ffe ku mu - saa - la - ba nze

Y'o - yo eya - bo - na - bo - na ku gya Pi - la - to n'a - zii - ki - bwa nze  
mu - kki - ri - za

y'o - yo ku lwe ssa - tu eya - zuu - ki - ra nga bwe kya - la - ngwa.  
mu - kki - ri - za

4. Y'o - yo eya - li - nnya gy'a - tu - dde eyo ewa Ki - ta - ffe, y'o - yo ali - jja  
nze mu - kki - ri - za

o - ku - la - mu - la aba - la - mu n'a - ba - fu o - bwa - ka - ba - ka bwe te - bu - li - ggwa - wo.  
nze mu - kki - ri - za

5. Mwo - yo Mu - tuu - ki - ri - ve Ka - to - nda a - si - bu - ka mu Ki - ta - ffe ne Mwa - na

mu - gu - lu - mi - za ki - mu na - bo, oyo ye ya - yo - ge - ra ne mu ba - la - nzi.



6. Nzi-kki-ri - za Kle - zi - a omu o - mu - tu - ku - vu Ka - to - li - ka o - wa Ba - tu - me,



ne Ba - ti - si - mu emu eso - nyi - wa ebi - bi; a - te ni - ndi - ri - ra oku - zuu - ki - ra kw' a - ba - fu,



n' o - bu - la - mu obw' e - mi - re - mbe egi - jja. A - mii - na a - mii - na a - mii - na.

### MUTUUKIRIVU

Mu - tuu - ki - ri - vu Mu - tuu - ki - ri - vu Mu - tuu - ki - ri - vu Mu - tuu - ki - ri - vu

vu wa - ggu - lu eyo Mu - ka - ma Ka - to - nda w' a - ma - ggye. E - ki - tii - bwa

o - yo Mu - ka - ma w' a - ma - ggye.

kyo ki - jju - dde eggu - lu n' e - nsi. Ddu - nda ho - sa - nna Ddu - nda ho - sa - nna

Ddu - nda ho - sa - nna, ho - sa - nna ho - sa - nna ho - sa - nna wa - ggu - lu eyo. *Fine*

O - yo ajja n'e-ki-tii - bwa mu li-nnya ly'O - mu-ka - ma atuu - ka a - te-nde-re-ze - a -

bwe - nga n'a - ma - nyi a - te-nde-re-ze - bwe-nga e - mi-re - mbe.  
te-nde-re-ze - bwe-nga n'a-ma - nyi

*D.S. al Fine*

### AKALIGA

A - yi ggwe aka-li - ga, a - yi ggwe aka-li - ga a - ka-ggya-wo ebi - bi by'e -

nsi tu-saa - si - re. A - yi ggwe aka-li - ga A - yi ggwe aka-li - ga a - yi

ggwe aka-li - ga a - yi ggwe aka-li - ga a - ka-ggya-wo ebi - bi by'e - nsi tu-saa - si - re.

A - ka-li - ga ka Ka - to - nda, tu-saa - si - re A - ka-li - ga ka Ka - to - nda tu-saa - si - re  
ggwe aggya-wo ebi -  
tu-saa - si - re a - ggya - wo ebi -

bi by'e - nsi tu-we emi - re - mbe tu-we emi - re - mbe tu - we mi - re - mbe.

## 514. MISSA TUKUTENDEREZA

### AYI MUKAMA

Fr. James Kabuye

*Recitative*

A - yi Mu-ka-ma omu-saa-si - zi saa-si-ra. A - yi Mu-ka-ma omu-saa-si - zi saa-si-ra.

A - yi Mu - ka - ma omu - saa - si - zi saa - si - ra.

Saa - si - ra, Kri - stu omu - saa - si - zi saa - si - ra.

Kri - stu omu - saa - si - zi saa - si - ra. A - yi Kri - stu omu - saa - si - zi saa - si - ra.

A - yi Mu-ka-ma omu-saa-si - zi saa-si-ra. A - yi Mu-ka-ma omu-saa-si - zi saa-si-ra.

A - yi Mu - ka - ma omu - saa - si - zi saa - si - ra.

### EKITYIBWA

*Recitative*

1. N'emirembe ku - nsi, ku ba - ntu bayaga - dde atyo.

*Chorus*

Tu - ku - te - nda, tukusaamu eki - tyi - bwa Ddu - nda, wa - kola bya kityi - bwa nnyo we - ba - le.





2. Tu - ku - te - nda, tukugulumiza, tu - ku - si - nza, tukusaamu eki - tyi - bwa.



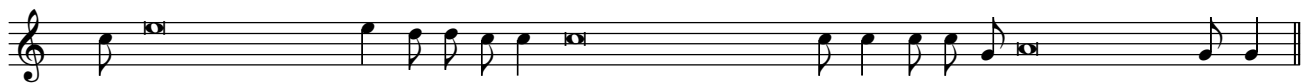
3. Ayi Mukama Ggwe Ka - to-nda, Ka-ba-ka ow'o-mu ggu-lu Ka-to-nda Pa-tri, o-mu-yi-nza wa bu-li ka-ntu.



4. A - yi Mu - ka - ma Ggwe Omwa - na, a - zaalibwa omu ye - kka, Ye - zu Kri - stu.



5. A - yi Mu-ka - ma Ggwe Kato - nda, Ggwe Aka-li - ga ka Ka-to-nda O-mwa-na wa Pa-tri.



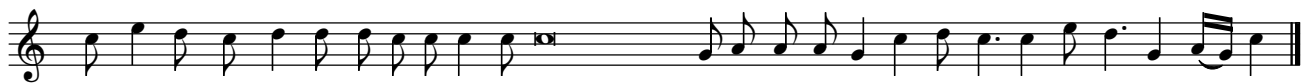
6. Ggwe aggyawo ebibi by'e-nsi tu-saa-si-re, Ggwe aggyawo ebibi by'e-nsi wu-li-ra okwegayirira kwa-ffe.



7. Ggwe atudde ku gwa ddyo ogwa Pa - tri, Ggwe atudde ku gwa ddyo tu - saa - si - re.



8. Ku-ba-nga ggwe Mu-tuu-ki-ri-vu we-kka, Ggwe Mukama we - kka, Ggwe ossuukiridde we-kka, Ye-zu Kri-stu.



9. Wa-mu ne Mwo-yo Mu-tuu-ki-ri-vu, mu kityibwa kya Ka-to-nda Pa-tri, A-mii-na, a - mii-na, a - mii- na.

### NZIKIRIZA KATONDA OMU

*Recitative  
Intonation*



Nzi - ki - ri - za Ka - to - nda omu.

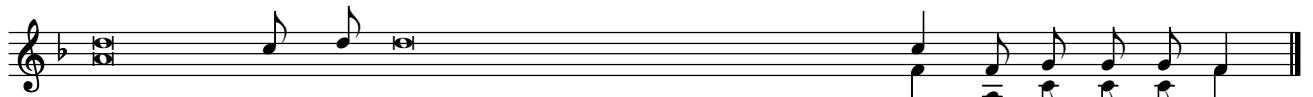


1. Pa-tri omu-yi-nza wa bu-li ka-ntu, e-ya-ko-la eggu-lu n'e-nsi, na byo-nna ebi-ra-bi-ka, n'e-bi-ta-la-bi-ka.

*Chorus*



Nzikiriza nze Pa - tri eya - nto - nda, nzikiriza ne Mwa - na eya - ndo - ko - la,




nzikiriza ne Mwo - yo Mutuku - vu e - ya - ntu - ku - za.



2. Nzikiriza Mukama wa - ffe omu Ye - zu Kri - stu, O - mwa - na omu atyi o - wa Ka - to - nda




Pa - tri gw'a - zaa - la, nga n'e - mi - re - mbe gyo - nna te - gi - nna - ba - wo.



3. Ye Ka - to - nda a - va mu Ka - to - nda, Kye ki - ta - ngaa - la ekya - va mu ki - ta - ngaa - la,



Ye Ka - to - nda dda - la a - va mu Ka - to - nda dda - la o - mu atyi.




4. Ya - zaalibwa buzaa - li - bwa, te - ya - to - nde - bwa.



Ye ne Pa - tri mu bwa Kato - nda be ba - mu dda - la, byo - nna, Ye ya - bi - ko - la.



5. O - yo, ku lw'okubeera ffe abantu olw'okutu - lo - ko - la,



ya - va mu ggu - lu n'a - kka, n'a - funa omubiri mu Bikira Mari - a



ku bwa Mwoyo Mutuu - ki - ri - vu, n'a - fuu - ka omu - ntu.



6. E - ra olw'okubeera ffe, ya - ko - me - re - rwa ne ku musaala - ba



n'abonabona ku mi - re - mbe gya Po - nti - o Pi - la - to, n'a - zii - ki - bwa.



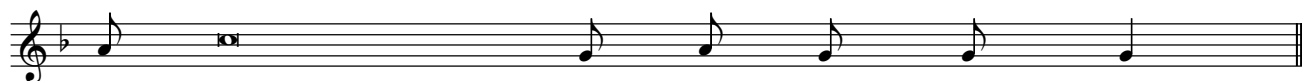
7. N'a - zuu - ki - ra ku lw'e - ssa - tu nga bwe kya - li mu biwandii - ko,



n'a - li - nnya mu ggu - lu, a - tu - dde ku gwa ddyo ogwa Pa - tri.



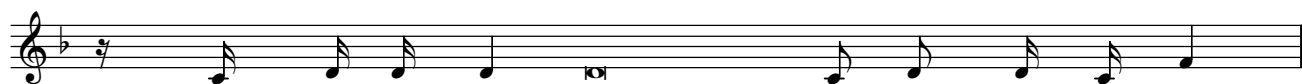
8. A - li - jja ogwo - ku - bi - ri n'e - ki - tyi - bwa o - kulamula abala - mu n'a - ba - fu,



o - bwakabaka bwe te - bu - li - gwa - wo.



9. Nzikiriza MwoyoMu-tuu-ki-ri-vu, O-mu-ka-ma, a - wa n'obula - mu, a - va mu Pa-tri ne Mwa-na.



10Ggwe tu - si - nza awamu ne Pa - tri ne Mwa - na,



ne tumugulumiza ki - mu bu - li - jjo, e - ya - yo - ge - re - ra oyo mu ba - la - nzi ab'e - dda.



11. Nzikiriza Batis - mu emu, e - sonyiwa ebibi byo-nna, a - te nnindirira okuzuukira okw'abfu,



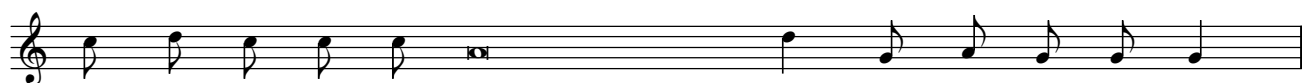
n'obulamu obw'emire - mbe egi - ri - ggya, A - mii - na.

## MUTUUKIRIVU

### *Recitative*



Mu - tuu - ki - ri - vu, mu - tuu - ki - ri - vu o - yo. Mu - tuukirivu, mutuu-kirivu o - yo.



Mu - tuu - ki - ri - vu, Mukama Katonda w'ama - gye, mu - tuu - ki - ri - vu,



Mu - ka - ma Ka - to - nda w'a - ma - gye, mu - tuu - ki - ri - vu.



E - ki - tyibwa kyo ki - jju-dde eggu-lu n'e-nsi, e - ki - tyi-bwa kyo ki - jju-dde eggu-lu n'e-nsi.



Ho - san - na wa - ggu - lu eyo, ho - san - na wa - ggu - lu eyo, ho - san - na wa - ggu - lu eyo.



O - yo ajja mu linnya ly'Omu-ka - ma atendereze - bwe, atendereze - bwe,



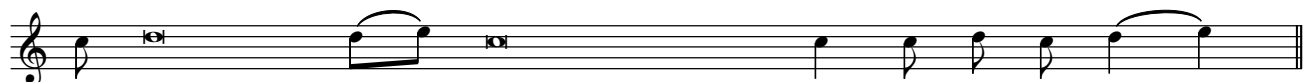
O - yo ajja mu linnya ly'Omu - ka - ma atendereze - bwe.

### AKALIGA

*Recitative*



A - kaliga ka Ka - to - nda ggwe aggya - wo ebibi by'e - nsi tu - saa - si - re.



A - kaliga ka Kato - nda ggwe aggyawo ebibi by'e - nsi tu - saa - si - re.



A - kaliga ka Kato - nda ggwe aggyawo ebi - bi by'e - nsi, tu - we emi - re - mbe.

### 515. MISSA TUKUSINZA SAASIRA

Fr. James Kabuye



A - yi Mu-ka-ma Ggw'o-mu-saa-si - zi Ggw'o-mu-saa-si - zi Mu-ka - ma omu-saa-si - zi,



a-yi Mu-ka-ma Ggw'o-mu-saa-si-zi saa-si - ra. Ggw'o-mu-saa-si-zi



saa - si - ra. A-yi Kri-stu a-yi Kri- stu

Ggw'o-mu-saa-si - zi  
 a - yi Kri-stu

Ggw'o-mu-saa-si - zi Kri - stu omu-saa-si - zi saa-si - ra.  
 a - yi saa - si - ra.

**EKITIIBWA**

*Recitative*

E - ki - tii - bwa ki - be mu ggu - lu eri Ka - to - nda.

1. N'e - mi - re - mbe ku nsi ku ba - ntu b'a - ya - ga - dde atyo.

Yo - nna mu ggu-lu ne mu nsi ffe tu-ku-te - nda tu-ku-gu-lu-mi - za ggwe Ka-to-nda wa-ffe.

2. Ffe tu-ku-te- nda tu-ku-gu-lu-mi-za tu-ku-si-nza, tu-ku-saa-mu ekiti-bwa, wa-ko-la bya ki-tii-bwa nnyo we-ba-le

3. A-yi Mu-ka-ma ggwe Ka-to-nda, Ka-ba-ka w'o-mu ggu-lu Ka-to-nda Pa-tri, o-mu-yi-nza wa bu-li ka-ntu.

4. A - yi Mu - ka - ma ggwe omwa - na a - zaa - li - bwa omu ye - kka, Ye - zu Kri - stu.

5. A - yi Mu - ka - ma ggwe Ka - to - nda, A - ka - li - ga ggwe aka Ka - to - nda, O - mwa - na wa Pa - tri.

6. Ggwe aggya-wo ebi-bi by'e-nsi, tu-saa-si-re, ggwe aggya-wo ebi-bi by'e-nsi wu-li-ra okwe-ga-yi-ri-ra kwa-ffe.

7. Ggwe atu - dde ku gwa ddyo ogwa Pa - tri, ggwe atu - dde ku gwa ddyo tu - saa - si - re.



8. Ku-ba-nga ggwe mu-tuu-ki-ri-vu we-kka, ggwe Mu-ka-ma we-kka Ggwe osu-ki-ri-dde we-kka Ye-zu Kri-stu.



9. Wa-mu ne Mwo-yo Mu-tuu-ki-ri-vu, mu ki-tii-bwa kya Ka-to-nda Pa-tri A-mii-na A - mii - na.

### MUTUUKIRIVU

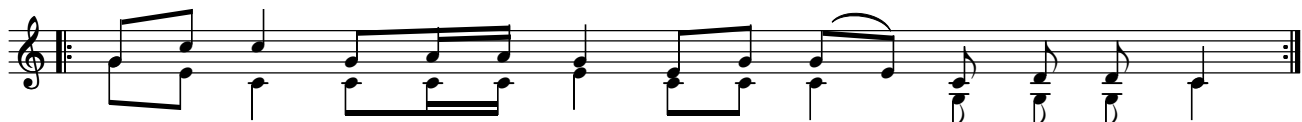
*Recitative*



Mu - tuu - ki - ri - vu nnyo Mu - ka - ma Ka - to - nda w'a - ma - ggye mu - tuu - ki - ri - vu nnyo,



Mu-ka-ma Ka-to-nda w'a-ma-ggye mu-tuu-ki-ri-vu. E - ki - tii - bwa kyo ki - jju - dde eggu - lu n'e - nsi.



Ho - sa - nna wa - ggu - lu eyo, ho - sa - nna wa - ggu - lu eyo.



O - yo ajja mu li - nnya ly'O - mu - ka - ma ate - nde - re - ze - bwe Ho - sa - nna wa - ggu - lu eyo,



O - yo ajja mu li - nnya ly'O - mu - ka - ma ate - nde - re - ze - bwe Ho - sa - nna wa - ggu - lu eyo,

### KALIGA KA KATONDA

*Recitative*

Ka-li-ga ka Ka-to-nda, Ka-li-ga ka Ka-to-nda Ggwe Ka-li-ga ka Ka-to-nda, gwe aggya-wo ebi-bi bye nsi

tu-saa-si-re; Ffe tu-saa-si-re Ka-li-ga ka Ka-to-nda ffe tu-saa-si-re ggwe aggya-wo ebi-bi by'e-nsi

Ka-li-ga ka Ka-to-nda ffe tu-saa-si-re Ggwe aggya-wo ebi-bi by'e-nsi tu-saa-si-re. tu-we emi-re-mbe.

**516. MISSA**

**SAASIRA**

Fr Vincent Bakkabulindi

Saa-si-ra a - yi Mu-ka-ma, saa-si-ra Ggwe omu-saa-si-zi; saa-si-ra

a - yi Mu-ka-ma omu-saa-si - zi tu-saa-si-re. A - yi Kri- stu Ggwe omu-saa-si-zi, a - yi Kri-stu

Ggwe omu - saa - si - zi tu-ku-ko - woo - la ffe otu - saa - si - re. Saa - si - ra

a - yi Mu-ka-ma, tu-ku-ko-woo-la Mu-ka - ma otu-saa-si-re Ggwe omu-saa-si-zi tu-ku-ko -

woo-la Mu-ka-ma tu-saa-si - re, Ggwe omu-saa-si - zi tu-ku-ko-woo-la Mu-ka - ma tu-saa-si-re.

**EKITIIBWA**

E - ki - tii - bwa ki-be mu ggu-lu eri Ka-to-nda. 1. N'e-mi-re-mbe ku nsi ku ba-ntu b'a-ya-ga-dde atyo.

*Chorus I*

Ffe tu-ku-te-nda tu - ku - gu-lu - mi-za e - ra tu-ku-si-nza ku - ba oli wa ki-tii - bwa.

2. Bye wa - ko - la byo - nna bya ki - tii - bwa wee - ba - le.

3. Pa - t - ri Ka-to-nda Mu-ka - ma omu-yi-nzaa wa byo-nna Ggwe Ka-ba-ka ow'o-mu ggu - lu



4. Ye - zu Kri - stu Omwa - na azaa - li - bwa omu ye - kka, Ggwe Mu - ka - ma wa - ffe.



5. Mu - ka - maa Ka - to - ndaa Aka - li - ga ka Ka - to - nda O - mwa - na wa Ki - ta - ffe.



6. Ggwe a-ggya-wo ebi-bi by'e - nsi tu-sa-si-re, Ggwe a-ggya-wo ebi-bi by'e - nsi wu-li-ra oku - wa-nja-ga kwa-ffe.

*Chorus II*



Ggwe a-ggya-wo ebi-bi by'e - nsi tu-sa-si-re, Ggwe a-ggya-wo ebi-bi by'e - nsi wu-li-ra oku - wa-nja-ga kwa-ffe.



7. Ggwe atu-dde ku gwa ddyo ogwa Pa-t-ri tu-saa-si - re. 8. Ku - ba ggwe Mu-tuu-ki-ri-vu we - kka, Ggwe Mu-ka -



8. ma we-kka, Ggwe osu-kki-ri-dde we - kka Ye-zu Kri - stu. 9. Wa-mu ne Mwo-yo Mu - tuu-ki-ri-vu, wa-mu ne



9. Mwo-yo Mu-tuu-ki-ri-vu mu ki-tii-bwa ekya Ka - to-nda Pa-tri, A - mii - na. Ggwe a-ggya-wo ebi-bi by'e -



nsi tu-sa-si-re, Ggwe a-ggya-wo ebi-bi by'e - nsi wu-li-ra oku - wa-nja-ga kwa-ffe. A - mii - na.

**MUTUUKIRIVU**



Mu - tuu-ki-ri-vu, O-mu-ka-ma Ka-to-nda w'a-ma - ggye; Mu-tuu-ki-ri - vu O-mu-k-ma Ka -



to-nda w'a-ma - ggye Mu - tuu - ki - ri - vu O - mu - ka - ma Ka - to - nda w'a - ma - ggye. E - ki -



tii-bwa kyo ki - jju - dde eggu-lu n'e-nsi e - ki - tii-bwa kyo ki - jju - dde eggu-lu n'e-nsi.



Ho-sa-nna wa-ggu-lu eyo, Ho-sa-nna wa-ggu-lu eyo. O - yo ajja mu li-nnya



ly'O-mu-ka-ma ate-nde-re-ze - bwe. Ho-sa-nna wa-ggu-lu eyo, Ho-sa-nna wa-ggu-lu eyo.

**AKALIGA KA KATONDA**

A - ka-li-ga k Ka-to - nda ggwe a-ggya - wo ebi-bi by'e-nsi tu-saa-si - re. A -

ka-li-ga ka Ka-to - nda ggwe a-ggya - wo ebi-bi by'e-nsi tu-saa-si - re. A -

ka-li-ga ka Ka-to - nda ggwe, a-ggya - wo ebi-bi by'e-nsi tu-saa-si - re tu-saa-si - re. Ggwe aggya -

wo ebi-bi by'e-nsi tu-we emi - re-mbe, tu-we emi - re-mbe, tu-we emi - re-mbe, tu-we emi - re-mbe.

**517. ULRIKA MASS I**

**Saasira**

Fr. Expedito Magembe

A - yi Mu-ka-ma Ggw'o-mu-saa-si - zi, a - yi Mu-ka-ma Ggw'o-mu-saa-si - zi

a - yi Mu-ka-ma, Ggw'o-mu-saa-si - zi. A - yi Mu-ka-ma Ggw'o-mu-saa-si - zi

A - yi, a - yi Kri- stu Ggw'o-mu-saa-si - zi. A - yi Kri- stu Ggw'o-mu-saa-si - zi

O-li mu-saa-si - zi Kri-stu oli mu-saa-si - zi, o-li mu-saa-si - zi Kri-stu oli mu-saa-si - zi.

O - li mu-sa-si-zi, o - li mu-saa-si-zi

### Ekitiibwa

E - ki - tii - bwa ki - be mu ggu - lu eri Ka - to - nda.

E - ki - tii - bwa ki - be eri Ki - ta - ffe Ka - to - nda, ne mu nsi eno e - mi - re - mbe.

1. Tu - ku - si - nza, tu - ku - te - nda tu - ku - gu - lu - mi - za, wa - ko - la bya ki - tii - bwa nnyo wee - ba - le.

2. Ye - zu Kri - stu Omwa - na wa Ka - to - nda, A - ka - li - ga ka Ka - to - nda Kri - stu Omwa - na wa Ki - ta - ffe.

3. Ggwe a - ggya - wo ebi - bi by'e - nsi tu - saa - si - re, tu - saa - si - re wu - li - ra okwe - ga - yi - ri - ra kwa - ffe.

4. Ggwe atu - dde ku gwa ddyo gwa Ki - ta - ffe, tu - saa - si - re Mu - ka - ma Ka - to - nda.

5. Ku - ba - nga ggwe Mu - tuu - ki - ri - vu we - kka, Ggwe Mu - ka - ma we - kka Ye - zu Kri - stu Ggwe osu - kku - lu - nye.

6. Wa - mu ne Mwo - yo Mu - tuu - ki - ri - vu, mu ki - tii - bwa ekya Ka - to - nda Pa - tri, A - mii - na.

## Alleluia

Al - le - lu - ia al - le - lu - ia al - le - lu - ia al - le - lu - ia.

1. Mu - te-nde-re-ze Omu-ka-ma wa - no mu nnyu-mba ye, mu-mu - te-nde-re-ze o-lw'e-ki-tii-bwa kye. Mu -

te-nde-re-ze Omu-ka-ma wa - no mu nnyu-mba ye, mu-mu - te-nde-re-ze oyo nnyi-ni bu-la - mu.

2. Mu - te-nde-re-ze Omu-ka-ma o - lw'e-ki-tii-bwa kye, mu-mu - te-nde-re-ze o-lw'o-bu-lu-ngi bwe. Mu -

te-nde-re-ze Omu-ka-ma o - lw'e-ki-tii-bwa kye, mu-mu - te-nde-re-ze Ka-to-nda w'a-ma - ggye.

3. Mu - te-nde-re-ze Omu-ka-ma mmwe aba-to-nde be, mu-mu - te-nde-re-ze omu-to-nzi wa byo - nna. Mu -

te-nde-re-ze Omu-ka-ma Ka - to-nda ata-le-mwa, mu-mu - te-nde-re-ze o-lw'o-bu-ku-lu bwe.

4. Mu - te-nde-te-ze Omu-ka-ma mu nnyi-mba ezi-nyu-ma, mu-mu - te-nde-re-ze a-saa-na kwa-ga - lwa. Mu -

te-nde-re-ze Omu-ka-ma mu ddo - bo-zi ery'a-wa-mu, mu-mu - te-nde-re-ze nga mu-li-wa - mu.

### NZIKIRIZA KATONDA OMU

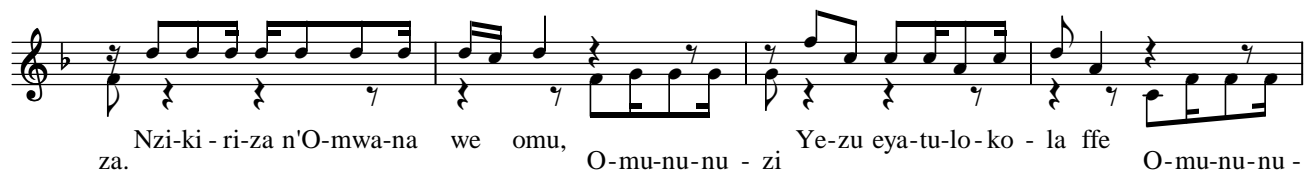
Words: Fr Expedit Magembe

Tune: Mrs Teresa Kalenzi

1. Nzi-ki-ri-za Ka - to-nda omu, Taa-ta Omu-ka-ma omu - yi-nza  
Nze mu-kki-ri - za nze mu-kki-ri -



e-ya-to-nda e-ggu - lu n'e-nsi, e - bi-ra - bi-ka n'e-bi-ki - si-ddwa. nze mu-kki-ri - za



Nzi-ki - ri-za n'O-mwa-na we omu, O-mu-nu-nu - zi Ye-zu eya-tu-lo-ko - la ffe O-mu-nu-nu - za.



e-ya-zaa-li-bwa Ma-ri-a omu - bee-re-re-vu ku bwa Mwo-yo Mu-tuu-ki-ri-vu Nzi-ki-ri - zi O-mu-nu-nu - zi nze mu-kki-ri-za.



za Ka-to-nda wa-nge. O - yo Na-mu-ge-re-ka Ka-to-nda w'a-ma-wa-nga go-nna. Nanta-le-mwa Lu-ga-ba



na-nnyi-ni bu-yi - nza. nze mu-kki-ri-za Mu-ka-ma na-nnyi-ni bi-to-nde O-mu-to-nzi. 2. E -



ya-bo-naa-bo-na ku bwa Pi - la - to nze mu-kki-ri - za ku mu-saa-la-ba n'a-fa n'a-kka n'e-ma-go-mbe



nga wa-yi-se ssa - tu y'a-zuu-ki-ra n'a-dda, n'a - li-nnya ewa Ki - ta-we mu ggu-lu gya-li Nze mu-kki-ri-za nze mu-kki-ri-za



ku gwa ddyo ewa Ki - ta-we kwa-tu-dde a - li-va eyo n'a-dda bw'a-tyo n'a-la-mu-la nze mu-kki-ri-za nze mu-kki-ri-za



a - li-ra-mu - la aba-la-mu n'a-ba-fu o - bwa-ka-ba-ka bwe te-bu-li-ggwa-wo. nze mu-kki-ri-za nze mu-kki-ri-za



Nzi-ki - ri-za Ka-to-nda wa-nge. O-yo Na-mu-ge-re - ka Ka-to-nda w'a-ma-wa-nga bwa lu-bee-re-ra.



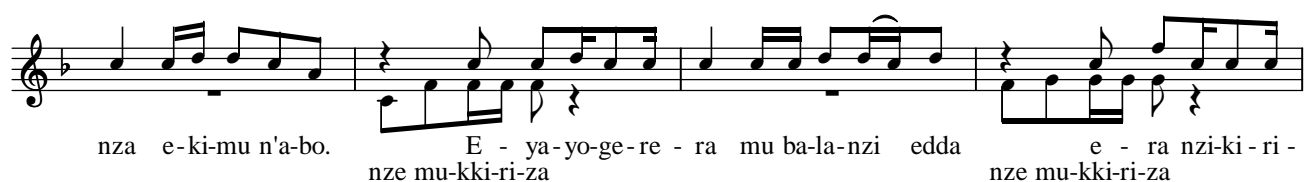
go-anna. Na-nta-le-mwa Lu-ga-ba na-nnyi-ni bu - yi - nza. Mu-ka-ma na-nnyi-ni bi - nze mu-kki-ri - za



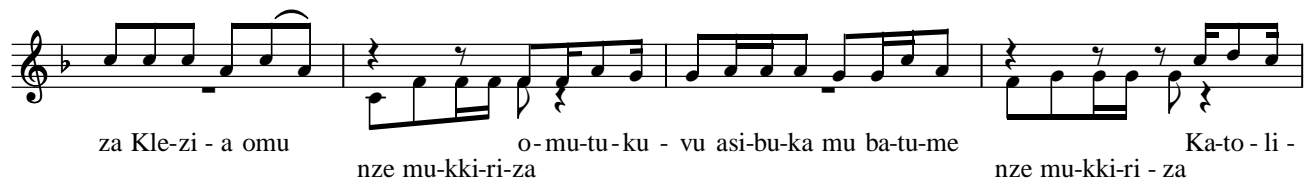
to-nde O-mu-to - nzi. 3. Nzi-ki - ri - za Mwo-yo Mu-tuu-ki-ri-vu e - ra Mwo - yo mu-kki-ri-za



Omu-ka-ma atu-waa obu-la-mu, a - si-bu-ka mu Ki-ta-ffe ne Mwa-na ffe gwe-tu-si - nze mu-kki-ri-za



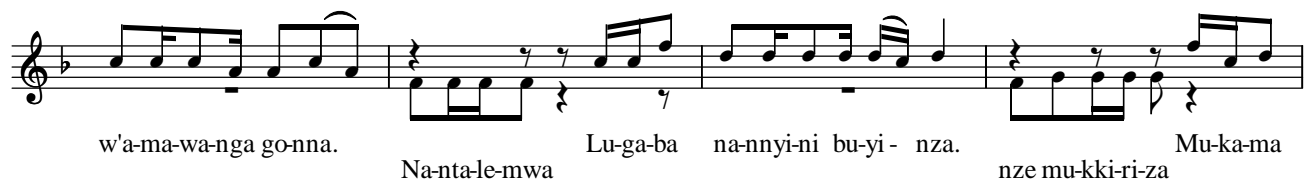
nza e-ki-mu n'a-bo. E - ya-yo-ge-re - ra mu ba-la-nzi edda e - ra nzi-ki - ri - nze mu-kki-ri-za



za Kle-zi - a omu o-mu-tu-ku - vu asi-bu-ka mu ba-tu-me Ka-to - li - nze mu-kki-ri-za



ka abu-nye ensi yo-nna. Nzi-ki - ri - za Ka-to-nda wa-nge. Ka-to-nda O - yo Na-mu-ge-re-ka



w'a-ma-wa-nga go-anna. Na-nta-le-mwa Lu-ga-ba na-nnyi-ni bu-yi - nza. Mu-ka-ma nze mu-kki-ri-za



na-nnyi-ni bi-to-nde O-mu-to-nzi. 4. Nja-tu-la ne Ba-ti - si - mu emu Dda-la nji-kki-ri -



e - tu-so-nyi-wa e - bi - bi bya-ffe ni-ndi-ri-ra oku-zuu-ki - ra kw'a-ba - fa dda-la nji-kki-ri - za



ra n'o-bu-la-mu obw'e-mi-re - mbe egi-ri - jja Nzi-ki - ri - za Ka-to-nda wa-nge. nze mbu-kki-ri-za. O -

yo Na-mu-ge-re-ka Ka-to-nda w'a-ma-wa-nga go-nna. Na-nta-le-mwa Lu-ga-ba  
na-nnyi-ni bu-yi-nza. nze mu-kki-ri-za Mu-ka-ma na-nnyi-ni bi-to-nde O-mu-to-nzi.

### AKALIGA

A ka-li-ga, A ka-li-ga, A ka-li-ga ka Ka-to-nda, tu-saa-si-re. tu-we emi-re-mbe.  
Ggwe a-ggya-wo ebi-bi by'e-nsi tu-saa-si-re, o-tu-we emi-re-mbe, o-tu-we emi-re-mbe, o-tu-we emi-re-mbe.

### 518. ULRIKA MASS II EKITIIBWA

Fr. Expedit Magembe

E-ki-tii-bwa ki-be mu ggu-lu eri Ka-to-nda, e-mi-re-mbe ku nsi ku ba-ntu b'a-ya-ga-dde atyo.  
Tu-ku-si-nza, tu-ku-te-nda, tu-ku-wa eki-tii-bwa Ka-to-nda, bye-wa-ko-la bya ki-tii-bwa nnyo wee-ba-le.  
2. A-yi Mu-ka-ma Ka-to-nda, Ka-ba-ka ow'o-mu ggu-lu Ka-to-nda Pa-ti-ri omu-yi-nza wa byo-nna.



3. A-yi Mu-kama Ggwe Omwanaazaali-bwaomu wekka Ye-zu Kristu, a-yi Mu-ka-ma Ka-tonda Omwana wa Ki-taffe.

*Refrain 2*

Tu - ku - gu - lu - mi - za, tu - ku - gu - lu - mi - za ffe o - li wa ki - tii - bwa nnyo Ka - to - nda

*to Refr. 2*

4. Ggwe aggya-wo ebi-bi by'e- nsi tu-saa-si-re, Ggwe aggya-wo ebi-bi by'e- nsi wu-li-ra okwe-ga-yi-ri - ra kwa-ffe.

*to Refr. 2*

5. We-kka Ggwe Mu-tuu - ki-ri-vu, Ggwe Mu-ka - ma we-kka, we-kka Ggwe osu-kki - ri-dde, Ye-zu Kri-stu.

6. Wa-mu ne Mwo-yo Mu - tuu-ki-ri-vu mu ki-tii-bwa ekya Ka-to - nda Pa-tri, A-mii- na.

A - mii - na, A - mii - na, A - mii - na, A - mii - na.

### Mutuukirivu

Mu - tuu - ki - ri - vu, Mu - tuu - ki - ri - vu, Mu - tuu - ki - ri -

vu, Mu - ka - ma, Ka - to - nda w'a - ma - ggye.

E - ki - tii-bwa kyo, E - ki - tii-bwa kyo ki - jju - dde eggu - lu n'e -

nsi, e - ggu-lu n'e - nsi, e - ggu-lu n'e - nsi, e - ggu-lu n'e - nsi, e -

ggu - lu n'e - nsi, bi - jju - dde e - ki - tii - bwa kyo.

Ho - san-na, Ho - Ho- san- na, ho - san-na, ho-san - na Mu-ka - ma. Ho ma.

O - yo ajja, o - yo ajja, o - yo ajja mu li - nnya ly'O - mu - ka - ma

a - te - nde - re - ze - bwe, a - te - nde - re - ze - bwe - nga.



## 519. WHITE FATHERS' MASS

Fr Expedit Magembe

O - li mu-saa-si-zi Mu-ka - ma, o - li mu-saa-si - zi, o - li mu-saa-si - zi ggwe o - li mu-saa-si -

zi. Mu-ka-ma gwe mu-saa-si - zi Mu-ka-ma gwe mu-saa-si - zi o - li mu-saa-si - zi.

A - yi Kri-stu, Ggwe omu-saa-si-zi A - yi Kri-stu Ggwe omu-saa-si-zi. Kri-stu ggwe mu-saa-si -

zi Kri-stu ggwe mu-saa-si - zi, Kri-stu ggwe mu-saa-si - zi ggwe oli mu-saa-si - zi.

### EKITIIBWA

1. E-ki-tii-bwa tu-ki-we Ki - ta-ffe Ka-to-nda. Tu-mu-te-nde-re-ze - nga, tu-mwe-ba-ze-nga Ka - to-nda.

2. N'e-mi-re-mbe ku b'a-ya-ga-dde Ka - to-nda. Tu-mu - te-nde-re-ze-nga, tu-mwe-ba - ze-nga Ka-to-nda.

3. E-byo by'a-ko-la bya tte - ndo Ka-to-nda. Tu-mu - te-nde-re-ze-nga, tu-mwe-ba - ze-nga Ka-to-nda.



dde eggu - lu n'e - nsi mu - tuu - ki - ri - vu mu - tuu - ki - ri - vu Ka - to - nda w'a - ma - ggye.

Ho - sa - nna, ho - sa - nna  
Ho - sa - nna ho - sa - nna ho - sa - nna ho - sa - nna wa - ggu - lu eyo sa -

Ho - sa - nna ho - sa - nna wa - ggu - lu ewa - la eri  
nna Ho - sa - nna ho - sa - nna ho - sa - nna sa - nna

wa - ggu - lu ewa - la eri wa - ggu - lu ewa - la eri. *Fine*  
O - yo ajja mu li - nnya ly'O - mu - ka - ma ate - nde - re - ze -

a - te - nde - re - ze - bwe, a - te - nde - re - ze - bwe. *D.S.*  
bwe, a - te - nde - re - ze - bwe

**AKALIGA**

A - ka - li - ga ka Ka - to - nda Ggwe, Ggwe, a - ka - ggya - wo ebi - bi by'e -  
A - ka - li - ga, A - ka - li - ga

nsi. A - ka-li-ga. A - yi Aka-li-ga, A - yi Aka-li-ga o - tu-saa-si-re. Tu-saa-si-re, A - ka-li-ga.

tu-saa-si - re, ka-li-ga A - ka-li-ga o - tu-we emi-re - mbe. e - mi - re-mbe.

**520. MISSA MU LULATINI**

*(De Angelis)*

**KYRIE**

Ky-ri - e - - le - i-son.

Chri-ste e - - le - i-son.

Ky-ri - e - - le - i-son.

Ky-ri - e e - - le - i - son.

## GLORIA

Glo-ri - a in ex-cel-sis De - o. Et in ter-ra pax ho-mi-ni-bus bo-nae vo-lun-ta - tis.

Lau-da - mus te. Be-ne-di-ci-mus te. A-do-ra - mus te.

Glo-ri - fi - ca-mus te. Gra-ti - as a - gi-mus ti - bi, pro-pter ma-gnam glo-ri-am tu - am.

Do-mi-ne De-us, Rex cae-le - stis, De-us Pa-ter o - mni - po - tens.

Do-mi-ne Fi-li u - ni - ge-ni - te Je - su Chri-ste. Do-mi-ne De-us. A-gnus De - i,

Fi - li - us Pa - tris. Qui tol - lis pec - ca - ta mun - di

mi - se - re - re no - bis. Qui tol - lis pec - ca - ta mun - di

su - sci - pe de - pre - ca - ti - o - nem no - stram. Qui se - des ad dex - te - ram Pa - tris

mi - se - re - re no - bis. Quo - ni - am tu so - lus san - ctus. Tu so - lus Do - mi - nus

Tu so - lus Al - tis - si - mus, Je - su Chri - ste. Cum San - cto

Spi - ri - tu in glo - ri - a De - i Pa - tris. A - - - men.

## CREDO

Cre-do in u-num De - um. Pa - trem o-mni-po-ten-tem, fa-cto-rem coe-li et ter-rae,

vi - si - bi - li - um o - mni-um, et in - vi - si - bi - li - um. Et in u-num Do-mi -

num Je-sum Chri-stum, Fi - li - um De - i u - ge - ni - tum. Et ex Pa-tre na - tum

an-te o-mni-a sae - cu-la. De-um de De-o lu-men de lu-mi-ne, De-um ve-rum

de De-o ve-ro. Ge-ni-tum non fa - ctum, con-sub-stan-ti - a-lem Pa-tri, per quem

o-mni-a fa-cta sunt. Qui prop-ter nos ho-mi-nes, et prop-ter no-stram sa-lu-tem, de-scen-dit de coe-lis

Et in-car-na-tus est de Spi-ri-tu San - cto ex Ma-ri - a Vir-gi-ne: Et ho-mo fac-tus est.

Cru-ci - fi - xus e - ti-am pro no - bis; sub Pon-ti - o Pi-la-to pas-sus, et se-pul - tus est

Et re-sur-re-xit ter-ti - a di - e se-cun-dum Scrip-tu - ras. Et a-scen - dit in coe - lum se -

det ad de-xte-ram Pa - tris. Et i - te-rum ven-tu-rus est cum glo-ri - a, ju - di - ca -

re vi - vos et mor - tu - os; cu - jus re - gni non e - rit fi - nis. Et in Spi - ri - tum San -

ctum Do-mi-num, et vi - vi - fi - can - tem; qui ex Pa - tre Fi - li - o que pro - ce - dit



Qui cum Pa - tre et Fi - li - o si - mul a - do - ra - tur et con - glo - ri - fi - ca - tur;

qui lo - cu - tus est per Pro - phe - tas. Et u - nam san - ctam ca - tho - li - cam et a - po - sto - li - cam Ec - cle - si - am.

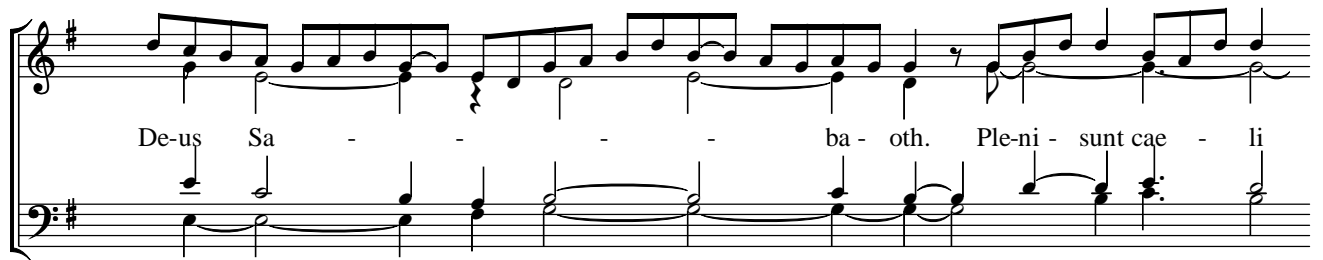
Con - fi - te - or u - num bap - ti - sma in re - mis - si - o - nem pec - ca - to - rum

Et ex - spe - cto re - sur - re - cti - o - nem mor - tu - o - rum. Et vi - tam ven - tu - ri sae - cu - li.

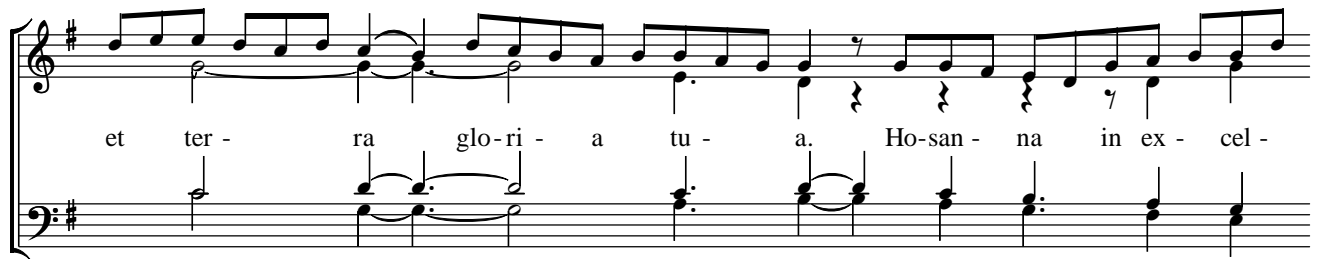
A - - - - - men.

## SANCTUS

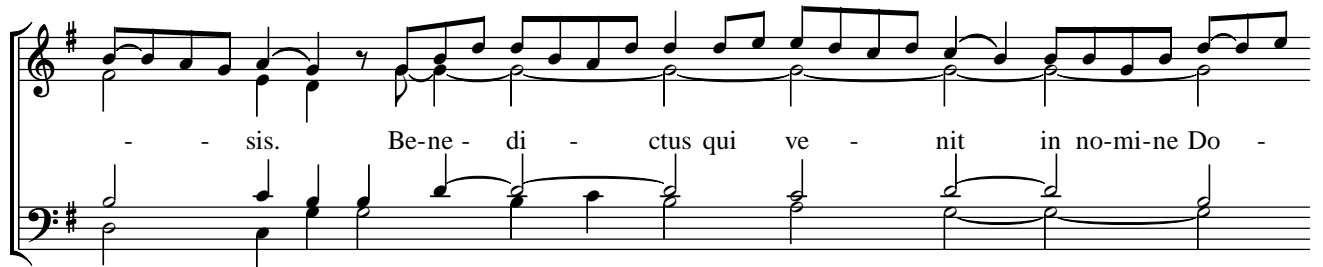
San - ctus, San - ctus, San - ctus Do - mi - nus



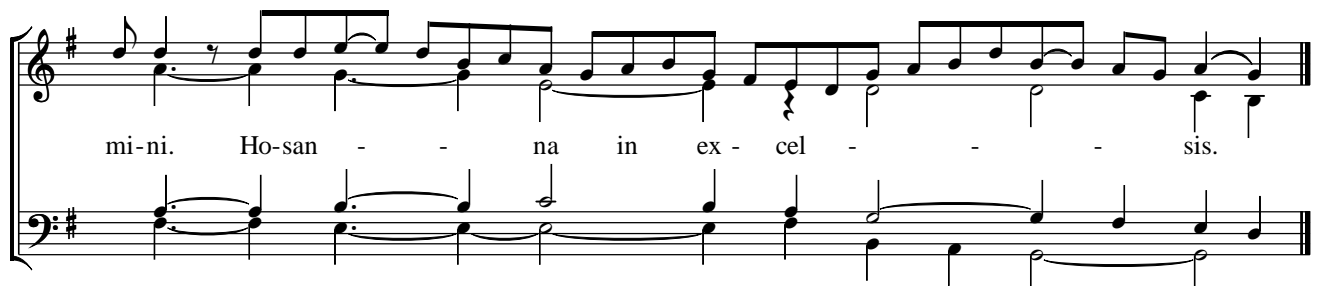
De-us Sa - - ba - oth. Ple-ni - sunt cae - li



et ter - ra glo-ri - a tu - a. Ho-san - na in ex - cel -



- - sis. Be-ne - di - ctus qui ve - nit in no-mi-ne Do -

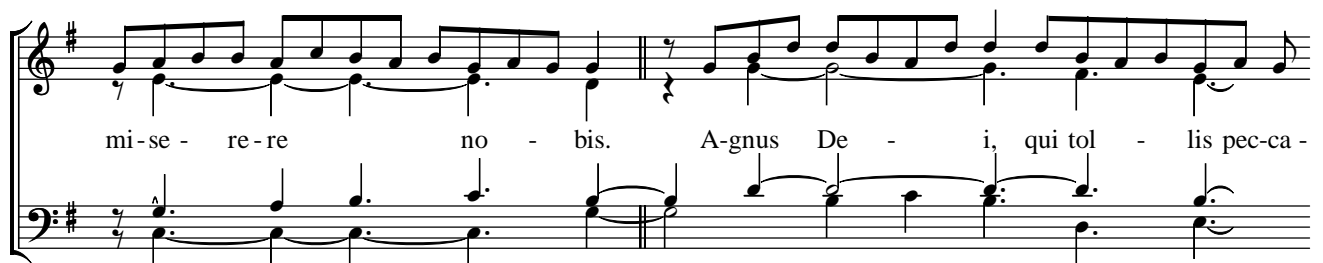


mi-ni. Ho-san - - na in ex - cel - - - sis.

### AGNUS DEI



A - gnus De - i, qui tol - lis pec-ca - ta mun - ndi:



mi-se - re-re no - bis. A-gnus De - i, qui tol - lis pec-ca -

ta mun - di: mi - se - re - re no - bis. A - gnus

De - i qui tol - lis pec - ca - ta mun - di: do - na no - bis pa - cem.

### DEO GRATIAS

De - o gra - ti - as.