

# KATI NKOLE NTYA?

Fr. James Kabuye



Ka-ti nko - le ntya Mu-ka - ma wa-nge? Ka-ti nko - le ntya? Ka-ti nko - le ntya?



Ka-ti nko - le ntya Mu-ka - ma wa-nge? Ka-ti nko - le ntya?



Nja ku-kwe-ba-za Mu-ka-ma wa-nge o-lw'o-ku-ba Ki - ta-ffe oya-mba. Mu-ka-ma wa-ffe o-lw'o-ku-ba obu -



Bwe nna-ku-yi - ta Mu-ka-ma wa-nge te - wa-nge-ba ku-jee-ra oya - mba. Mu-ka-ma wa-nge bu -  
su-ngu obu-pi-ma.



Nja ku-kwe-ba-za Mu-ka-ma wa-nge a-maa-nyi go o - mpa-dde n'o-ngu-mya. Mu-ka-ma  
su-ngu bwo wa-bu-zza ema-be - ga



Ma-zi - ma Ka-to-nda ye Mu-lo-ko - zi wa-nge, otyo ka -  
wa-nge a-maa-nyi go o - mpa-dde ne ngu-ma.



ti nno nze na-bu-lwa-ko gwe ntya. Ma-zi - ma Ka-to-nda ge maa-nyi ga-nge ku nsi, lu -



yi-mba nze naa - bu-lwa ki w'a-li? Ye bu-lo-ko-zi bwa-nge, nze naa-bu-lwa ki? Ye ge maa-nyi ga-nge,



nze naa-bu-lwa ki w'o - li? Mu-naa-se-na ama-zzi ag'o-bu-lo-ko-fu, mu-naa-se-na ama-zzi



mu nzi-zi e-z'o-bu-lo-ko - fu nga mu-sa-nyu-ka, nga mu-yi-mba, nga mwe-ba-za Omu-ka-ma



mu-gu-lu-mi-za e-ri-nnya lye ettu-ku-vu ennyo, o - lwo nga mu-ga-mba: A - te-nde-re-ze-bwe,



Mu-ka-ma Ka-to-nda, a - te-nde-re-ze-bwe afu-ga, e-ggu-lu n'e-nsi. A e-ggu-lu n'e-nsi. Mu -



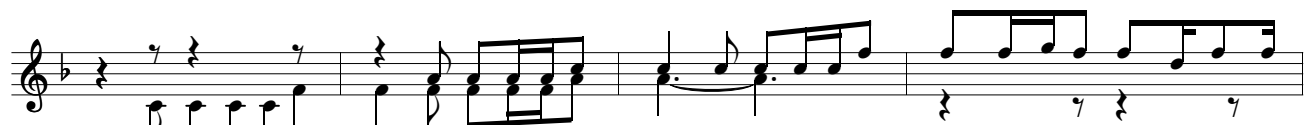
la-ngi-ri-re eri-nnya lye mu ba-ntu bo-nna, mu - la-ngi-ri-re ette-ndo lye. Mu la-ngi-ri-re ette-ndo lye.



Mu ba-ntu bo-nna mu - ku-ngi-ri-ze by'a-ko-ze. Mu ba-ntu bo-nna mu - te-nde-re-ze by'a-ko-ze.



Bi-su-ffu nnyo, mu - te-nde-re-ze eri-nnya lye. Bi-ru-ngi nnyo bya ki-tyi-bwa by'a-ko-ze.



Mu-la-ngi-ri-re nnyo Mu-la-ngi-ri-re nnyo, mu-la-ngi-ri-re nnyo obu-ku-lu bw'e-ryo eri-nnya



lye. Mu-la-ngi-ri-re nnyo, mu-la-ngi-ri-re nnyo, mu-la-ngi-ri-re nnyo e-ri-nnya lye eyyu-ku-vu



Mu-yi-mbe ne za-bu-li mmwe abaa-na be, mu-yi-mbe ne za-bu-li mu maa-so ge.



Mu-ka-ma ako-ze eby'a-ma-ge - ro. Mu-ka-ma ako-ze eby'a-ma-ge - ro. Mu-ka-ma ako-ze eby'e-ntii-



sa, mu-bi-ra-ngi-ri-re. Mu-ka-ma ako-ze eby'a-ma-ge - ro, mu-bi-ra-ngi-ri-re. Mu-ka-ma ako-ze eby'a-ma-ge -



ro, mu-bi-ra-ngi-ri-re - nga mu nsi yo-nna, mu nsi yo-nna yo-nna. Mu-bi-ra-ngi-ri-re - nga, mu-bi-ra-ngi-ri-re, Kati Nkole Ntya? 2 yo - nna.

mu nsi yo-nna, yo-nna, mu nsi yo-nna, yo-nna. Mu-lee-kaa-ne n'e-ssa-nyu, mmwe nno aba-ntu

mu-saa-kaa-nye n'e-ssa-nyu. Mu-lee-kaa-ne Mu-saa-kaa-nye  
 ba-nge, Mu-ka-ma ali mu ffe. li-mba.  
 Mu-ka-ma ali mu Sioni.  
 Mu-ka-ma oli na-ffe.  
 Mu-ka-ma ta -

O-li Ka-to-nda dda-la mu - tuu-ki-ri-vu wa I - s-ra - e - li. O-li Ka-to - nda dda-la Ba-ntu be tu -  
 E - nsi yo-nna  
 Mu ggu-lu ba -

saa-kaa-nye. O-li Ka-to-nda dda-la O-li Ka-to - nda dda-la we - kka.  
 ke - yi - mbe.  
 saa-kaa-nye.