

LEKA ABANTU BANGE BAGENDE

EXODUS OPERA

Fr Dr James Kabuye
28/10/2000

Bass or Tenor Solo



Le - ka aba - ntu ba - nge ba - ge - nde Fa - raa - wo, le - ka aba - ntu ba - nge ba - ge - nde.



Le - ka aba - ntu ba - nge ba - ge - nde Fa - ra - wo, le - ka aba - ntu ba - nge ba - ge - nde.



Le - ka ba - ge - nde, le - ka ba - ge - nde. Le - ka ba - ge - nde, bw'o - no - gaa - na ka - na - ku - jjuu - tu - ka.

1 AYITA CHORUS

Ng'atwanga



Nko - woo - la, nko - woo - la omu - yi - nza wa byo - nna, a - lu - wa Mu - ka - ma wa - nge



gwe - nzi - ri - nga - na eya - nko - le ra ebi - kuu - no ku nsi, gwe mpi - ta - yi - ta alu - wa? A - lu -



wa Mu - ka - ma wa - nge alu - wa? nge o - mu - zi - ra - ki - sa alu - wa



Jja - ngu, jja - ngu vva mu ggu - lu ojje o - tu - lo - ko - le. Jja - ngu, jja - ngu vva mu ggu -



lu ojje, la - ba aba - la - be ba - ffe baa - tu - daa - za, ba - twe - to - lo - dde ba - tu - ka - vvu - le, ba - swa - dde.



To - twa - bu - li - ra - nga we - te - ma oku - ba na - ffe, to - twa - bu - li - ra - nga atwa - ga - la oku - zaa - ma.



Ka - to - nda wa - ffe, to - twa - bu - li - ra - nga. Ka - to - nda wa - ffe to - twa - bu - li - ra - nga o -

wa-ffe o-mu-wa-ngu - zi ow'a-maa-nyi, tu - ya-mbe o-mu-wa-ngu - zi a-sii-mwa. Tu -

kwe-su-nga, o-mu-wa-ngu - zi ow'a-maa-nyi, tu - kwe-ku-tte o-mu-wa-ngu - zi a-sii-mwa to -

Chorus

me-ggwa, to-fee-nya. Tu-mbii-ra wa-ggu-lu dda-la Mu-ka-ma wa-ffe, tu-mbii-ra

wa-ggu-lu dda-la, wa-ggu-lu dda-la; tu-mbii - ra wa-ggu-lu dda - la

wa-ggu-lu dda-la. E-ki-tii-bwa kyo ki-jju-dde eggu-lu n'e - nsi Mu-ka-maa wa-ffe osaa-na kwa-ga-lwa. *DC.*

Ba-la - be aba-la-be ba-nge baa-li-ri-dde omu-te-go we-mpi-ta, ngu-dde mu mpo-lo-go-ma ez'a-ma -

ddu ezi-ka-vvu-la aba-ntu a - ba-ka-tta-gga ba-si-mye - yo eki-nnya ba-njo-kye mu lwa-tu, ba-ki-gwe -

mu, ba-ki-gwe - mu nnyi-ni ba-ffe olu-mbe. Nze nno nsaa-si - ra, nze nno nsaa-si-ra Mu-ka-ma

wa-nge ne-wo-go-mye mu ggwe nywe-dde Ka-to-nda wa-nge ne-wo-go-mye mu ggwe Ddu-nda omu-ya-mbi
 Mu-lwa-nyi wa-nge ne-wo-go-mye mu ggwe Ddu-nda omu-kuu-mi
 Mu-yi-nza w'o-li W'o-li a - te nze

wa-nge ne-wo-go-mye mu ggwe nywe-dde. Mu-lwa-nyi wa-nge ne-wo-go-mye mu ggwe Ddu-nda omu-kuu-mi

wa-nge ne-wo-go-mye mu ggwe nywe-dde. Mu-yi-nza w'o-li ne-wo-go-mye mu ggwe W'o-li ate nze

ntya ki? ne-wo-go-mye mu ggwe nywe-dde. o-ku - tuu-sa omu-ya-ga lwe gu-na-yi-ta, o-mu-ya -

ga lwe gu-na-yi - ta, o-mu-ya-ga. a-ma-zi - ma ma-nyi, sse-ri-mba, ssi -

ri-mba, sse-ri - mba ggwe ompa-ni-ri - ra. O-mwo-yo gwa-nge mu-gu-mu dda-la, naa-yi-mba,

naa-yi-mba nga bwe nku - ba endo-ngo. Mwo-yo gwa-nge te-we-ba-ka, mwo-yo gwa-nge te-we-ba-ka, na -

zuu-ku-sa ama-lii-ri. Ndi-ku-te-nda ne nku-yi-mbi - ra ggwe Ka-to-nda mu ma-wa-nge ne mu ba-ntu

bo, e-mi-re-mbe gyo-nnaa. E-ki-sa kyo kye nte-nda ki-ne-ne dda - la, ki-ko-ma eyo wa-ggu-lu dda -

la; n'o-bwe-si - gwa-bwo bu-ko-ma dda-la eyo ku bi - re. A - yi Ka-to-nda

we-ra-ge dda-la bw'o-si - nga e-ggu-lu n'e - nsi, n'e-ki-tii-bwa kyo ki-bee-re ku nsi

ku nsi yo-nna, a - mii - na a - mii-na a - mii -

na a - mii - na a - mii - na na.

2 Bass ne Tenor

Bass

Zi-ba-sa - nze a - bo aba-te-ge - ka oku-ko-la eby'e-nzi-ro. Zi-ba-sa - nze

a - ba-kee-sa nga ba - te - ge - ka eki-bi. Zi-ba-sa - nze, zi-ba-sa - nze otu -

lo be-tu-bu - la nga bee-ko - ba eki-bi. O-bu - dde oku-kya kye baa-so-bo - la nga ba-ki -

tuu-ki-ri-za. Bee - go-mbye nni-mi - ro e - yo nga ba-gi - twa-la, bee - go-mbye nnyu -

mba e - yo nga ba-nya - ga; bee - go-mbye bu-ga - gga eby'o-bu-si - ka nga ba-nya - ga.

Tenor

Zi-ba-sa - nze mmwe, zi-ba-sa - nze mmwe wu-li - ra Omu-ka-ma aga-mba: La - ba, la - ba

ntee-ka-tee-ka oku-zi-ki-ri-za eggwa-nga li - no ebbi e - ggwe-nyu-fu, te - mu-ggye- mu nsi-ngo za-mmwe ya -

dde oku-ta-mbu - la nga mwe-go - lo-dde, e - no ssaa-wa mbi. Nja ku-ba - ku-nnga-nya mwe-nna aba-ntu

Bass & Tenor

ba-nge bu-li omu gy'a-li, bu-li omu ye-nna. Mmwe ggwa-nga Iya Ya-ko-bo ba-mu-la -

ba nna-ku, a-ba-to - no dda-l, ba ka-wo-na-wo. Nja ku-ba - ku-nnga-nya mu ki-si-bo ki - mu;

ng'O-mu-su-mba mu ki-si-bo kye. Te-wa-li ana-ba-tii-sa. Na-ba-lo-ko - la.

3 Duet

Pharaoh ajja nga yekunkumula

Farawo

A - ba - yu - daa - ya ba - tu - yi - nze dda - la dda - la, ba - ngi bu - la - la nnyo. Yee, la -
 ba A - ba - yu - daa - ya ba - tu - yi - nze ba - ngi bu - la - la nnyo; o - mu - la - be bw' a - na - tu - lu - mba
 ssi ku - lwa nga bee - ga - tta na - ye ffe - nna ne ba - tu - saa - nya. Mu - ba - ko - ze - se emi - ri - mo
 e - gy' a - maa - nyi baa - fe, ba - ggwe - mu ama - nyi ba - saaa - ne - wo. Bu - li kaa - na a - ka - zaa - li - bwa nga ka - le - nzi
 mu - ka - tte ko - nna, o - bu - wa - la bwo mu - bu - le - ke te - mu - bu - tta, bu - na - tu - wee - re - za - nga; mu - wu - li - dde?

Nurses

Wa - yi - ya, wa - yi - ya, wa - yi - ya nfu - dde enna - ku. Wa - yi - ya, wa - yi -
 ya o - mwa - na w' o - bu - le - nzi a - lu - ma bu - bi ta - zaa - li - ka. Ba - go - be, ba - go -
 be bu - go - bi sse - bo to - ba - tta. O - ku - zaa - la ba - ngi Ka - to - nda y' a - ga - ba.

Farawo

Te - tu - jja ku - ba - go - ba, a - ba - ddu tu - bee - taa - ga. A - a -
 te - tu - jja ku - ba - go - ba; nja - ga - la ki - no, tu - kee - ndee - ze
 omu - we - ndo gwa - bwe. Kye nnga - mbye ki - bee - re ki - tyo.

Farawo avaawo

Female

Woo - we, woo - we, woo - we, woo - we e - nna - ku y'e - nsi ng'e - ntuu -
 e - nna - ku y'e - nsi e - nna - ku y'e - nsi ng'e - ntuu - se ku mu - ti - ma; a - ga -
 naa - si - ga - la enga - lo ensa. A - baaa - mi ba - ffe ba - fii - ra mu nni - mi - ro.
 Ba - fii - ra mu nni - mi - ro, ba - ku - lu - sa - na awa - ta - li ku - wee - ra.
 Hi! nga ki - ta - lo nnyo! E - mi - go - ngo gi - tu - mya - nsa gi - tu - mya -
 gi - twe - we - se ng'o - mu - te - go, a - baa - na ba - ffe ba - ba - sse ba -
 nsa gi - twe - we - se,
 ba - ma - zee - wo. A - ni ana - tu - si - ki - ra nga tu - ggwo - wo nga tu - ggwa - wo!
 Tu - wa - nja - ga gy'o - li, tu - waa - nja - ga gy'o - li, tu - wa - nja - ga gy'o - li
 li Ka - to - nda wa - ffe gw'o - mu - saa - si - zi tu - saa - si - re, tu - saa - si - re, tu - zi - ki - ri -
 ra nga te - tu - li - na mu - sa - ngo. Ffe aba - ntu bo tu - wo - nye to -
 tu - zi - ki - ri - ra tu - zi - ki - ri - ra

twa - bu - li - ra. Jju - ki - ra e - nda - gaa - no yo e - y'o - lu - bee - re - ra.

Chorus

Ssi - nga, ssi - nga, ssi - nga, ssi - nga, ssi - nga Omu - ka - ma te - ya - li na - ffe, te - ya -

li na - ffe ba - ndi - tu - mi - ze, ba - ndi - tu - mi - ze aba - la - be ba - ffe, ba - ndi - tu - mi -

ze; ba - ndi - tu - we - mme - nse ne tu - ggwa - wo. Ba - ndi - tu - mi - ze nga tu - la - ba. O -

wa a - ba - tu - kya - wa ba - ndi - tu - mi - ze nga tu - la - ba. O - bu - su - ngu

bwa - li bu - ba - lya, nga bu - bu - mbu - jja ng'o - mu - li - ro. o - bu - su - ngu, Bwa - li bu - ba -

lya obu - su - ngu bwa - li bu - ba - lya. nga bu - bu - mbu - jja nga bu - bu - mbu - jja

ng'o - mu - li - ro. Jja - ngu Omu - ka - ma n'o - tu - ya - mba jja - ngu Omu - ka - ma

nnyi - ni bu - yi - nza to - tu - suu - la twe - si - ga ggwe.

4 Chorus

Soloist ava ebweru n'akulembera

Mu - ka - ma wa - nge, Mu - ka - ma wa - nge, ggwe oli omu we - kka jja - ngu onnya - mbe, la - ba ndi bw'o - mu,



ndi bw'o-mu, ndi bw'o-mu, ndi bw'o-mu, ndi bw'o-mu jja-ngu onnya-mbe dda la ndi



bw'o-mu. Ndi bw'o-mu, ndi bw'o-mu, ndi bw'o-mu, ndi bw'o-mu, ndi bw'o-mu, jja-ngu onnya-mbe dda la ndi



bw'o-mu si-ri-na-yo mu-la - la, si-ri-na-yo mu-la - la o-ku-ggya-ko ggwe. Jja-ngu onnya-mbe la-ba ndi



Solo
bw'o-mu ndi bw'o-mu. O-bu-la-mu bwa-nge bwo - nna mbu-twa-li-ra awo mu nga - lo, naa-te-ra oku - ta,



Chorus
naa-te-ra oku-ta; nze mbu-wa-dde-yo bwo-nna. Si-ri-na mu-sa-ngo Ddu - nda Mu-ka-ma wa-nge.



Si-ri-na mu-sa-ngo n'a-ka - mu, nee-ku-ma nnyo Ka-to-nda wa-nge obu - ta-zza mi-sa-ngo nze n'a-ka -



mu. Ba-nyi-gi - ri - za oku-va obu-to bwa-nge, a - ba-la-be ba-nyi-gi - ri - za, la - ba ba-tuu-se



mu-nda mu ma-ka ga Ki - ta-nge, a - ba-nkya-ye ba-nyi-gi - ri - za. Nnya - mba, nnya-mba la -



ba nzi-ru-ki-ra gy'o-li a-yi Mu-ka-ma, ggwe nga-bo ya-nge, ggwe lwa-zi lwa-nge, o-mu-fu-nga-mye obu-lo-ko -



Solo
fu bwa-nge ng'a-ba-bi abo ba-nyi-gi - ri - za. Ssi ggwe wa-lo-nda I - sra - e - li mu ma-wa-nga



Chorus
go-nna? Ssi ggwe wa-lo-nda ba-jja-jja - ffe o-ku-va ddi na ddi? Wa-ba-lo-nda-mu ba -



bee-re obu-si-ka bwo, o - ku-va dda-la olwo, o - ba - yi - sa bo-nna nga bwe wa - la-gaa-nya.



Tuu-ki-ri-za, tuu-ki-ri-za, tuu-ki-ri-za enda-gaa-no yo Mu-ka-ma wa-ffe. E -



mi-gwa gy'e-ma-go-mbe gi - nta-yi-za, e - mi - te - go gy'o-lu-mbe gi - nnu-mba, a - ma - ye - ngo



g'o-lu-mbe ga - nta-yi-za e - nge - zi e - z'a-ka-bi zi - ntii-sa, na - ye ffe tu - wo - nye mu maa - so go ayi Mu - ka -



ma. To - tu - waa - yo, to - tu - waa - yo mu mi - ko - no gy'a - ba - la - be ba - ffe. To - tu -



waa - yo, to - tu - waa - yo, to - tu - waa - yo, to - tu - waa - yo mu mi - ko - no gya lu - baa - le wa - bwe.



La - ba te - ba - ko - mye ku - tu - fu - ga bu - ddu a - yi Mu - ka - ma, la - ba ba - sa - zee - wo oku - zi - ki - ri - za obu - si - ka



bwo; ba - zi - bi - ki - ri - ze e - mi - mwa e - gi - ku - te - nda ku nsi. O - li mu - tuu - fu gu - tu - si - nze



o - li mu - tuu - fu gu - tu - si - nze, o - li mu - tuu - fu gu - tu - si - nze Mu - ka - ma. Saa - si - ra eki - bii - na kyo



e - ki - kwe - yu - nye, to - ga - nya dda - mu - la yo ku - kwa - si - bwa bi - faa - na - nyi e - bi - ta - li - na na bu - la - mu.




To - kki - ri - za ba - ntu bo ku - se - ke - re - rwa, to - kki - ri - za ba - ntu bo ku - saa - nyi - zi - bwa - wo



E-byo bye ba-tee-sa, ggwe bi-kyu-si-ze ku bo. A - yi Mu-ka-ma a - tu-lu-mba ye-nna



bi-mu-fuu-ki-re eki-jju-ki - zo a - swaa-le. Nkuu-ma, nkuu-ma



nkuu-ma ng'e-mu-nye y'e-rii-so lyo. y'e-rii-so lyo, nkuu-ma mu ki-sii - ki-ri-ze




e-ky'e-bi-wa-wa - ti-ro byo, o-mpo-nye a-bo-noo-nyi a - ba-nnu-mba. Nze Mu-ka-ma wa-nge nze



mpa amaa-nyi to-nsuu-la dda-la nze mpa amaa-nyi, Ka-to-nda wa ba-ka-to-nda nze




mpa amaa-nyi, Ka-to-nda na-nnyi-ni bu-yi-nza nze mpa amaa-nyi, nze mpa amaa-nyi.



Mu ka-mwa ka-no ssaa-mu e - bi-ga-mbo ebyoo-gi, e - bi-se-nda-se-nda, ssaa - mu ebi-ga-mbo mu nze.



Mu maa-so g'e-mpo-lo-go - ma nnya-mba, ne-wo-go-mye mu ggwe. O - bu-su-ngu bwe bu-dde eri abo aba-tu -



Chorus
kya-ye. Ba - saa-ne-wo, ba - saa-ne-wo n'a-bo a - ba-ba-faa-na - na. Y'a -



yi-ma mu ggu-lu n'a-go-lo - la omu-ko-no gwe n'a-nkwa - ta, na-nyi-nyu-lu - la mu ma-zzi ama-ngi.



Ma-zi-ma Ka-to-nda oyo mu-gu-lu-mi-za, ku - ba-nga Ddu-nda aba-na-ku ggwe oba-lo-ko-la

A-ba-ka-nu-dde amaa-so o-ba-bo-ne-re-za. Na - ye ffe tu-wo-nye, tu-wo-nye ayi Mu-ka - ma nnya-mba

Chorus (Bass)

nnya-mba la-ba ndi bw'o-mu. A-ba-ka-mbwe aba-noo-nya ba-li-na obu-swa-ndi. Yee, la-ba nnya -
A-ba-ka-mbwe aba-noo-nya si-ri-na mu - sa - ngo. Yee, la-ba nnya -
A-ba-ka-mbwe aba-noo-nyaa ba-li-na omu - sa - ngo. Yee, la-ba nnya -

mba la-ba ndi bw'o-mu. Si - ri - na - yo mu - la - la o - ku - ggya - ko ggwe, si - ri - na - yo mu - la - la

wa-bu-la ggwe we-kka; o - bi - ma - nyi byo - nna, a - yi Mu - ka - ma o - w' - o - bu - yi - nza ata - le - mwa. Taa -

ta wu - li - ri - za eddo - boo - zi eri - te - re - bu - se, e - ri - ta - li - na bu - ddu - ki - ro. Ntaa - sa, ntaa -

Faster

sa la - ba nzi - ki - ri - ra. A - yi Ka - to - nda ntaa - sa ow' - o - bu - yi - nza obu - ngi, o - mu - yi - nza wa byo - nna.

A - yi Ka - to - nda mpu - li - ra mpwe - dde - mu nze amaa - nyi, nze nte - re - bu - se nnyo.

Ba - nti - si - zza, ba - nti - si - zza kyo - kka a - ba - la - be aba - nge ba - jja ku - ddu - ka; n' - a - ba - nkya - wa

ba - na - bu - na emi - wa - bo ggwe lw' - o - no - jja o - ku - nnya - mba o - n' - o - ba - ma - la - wo, o - n' - o - ba - ma - la - wo.

5 Scene II: Okulabika kwa Katonda

Sopr. Solo (Yekka ku stage)

Mu - sa y' - a - li alu - nda, Mu - sa y' - a - li alu - nda a - ma - ga - na ga Jeth - ro sse - zaa - la we.

A - li mu ddu - ngu, a - li mu ddu - ngu. A - li mu ddu - ngu a - lu - nda,

n'a-ggu-ka ku lu-so-zi lw'O-mu-ka - ma Ho-reb. Ho-reb, Ho-reb

o - lu - tii - sa. Ma - la - yi - ka w'O-mu-ka - ma n'a - la - bi - ka.

A - li mu ki - sa - ka eki - buu-buu - ka sso nga te - ki - ggya. N'a - ga -

mba nti: Ntee-kwa, ntee-kwa, ntee-kwa oku - ge - nda nnee-ro-le -

re. Ntee - kwa oku - ge - nda nnee - ro - le - re e - ky'a - ma - ge - ro ki - no.

Lwa - ki e - ki - sa - ka te - ki - ggya, sso ng'a - te ki - buu-buu - ka.

Ki - so-bo-ka ki - tya? Ki - so-bo-ka ki - tya? Ki - so-bo-ka ki - tya?

6 Duet

Mu-sa! Mu-sa! O - wa-nge Mu-sa. Mu-sa o-wa-nge Mu-sa!

Musa


Nzuu-no Mu - ka-ma wa - nge. Nzuu-no Mu - ka-ma wa - nge.

Katonda

To-ge - za ku-se-mbe-ra, to-ge-za ku-se-mbe-ra, to-ge - za ku-se-mbe-ra Naa-nu-la enga-tto

zo, naa-nu - la enga-tto zo ku - ba - nga e - ki - fo ki - no ky'o-li-ko dda - la ki-tu-ku-vu.

Musa atya yebikka ekiremba



Nze Ka-to-nda wa ba-jja - jja-bo I - b-ra-hi - mu, I-zaa-ke ne Ya-ko-bo. Nda - bye embee-ra embi, nda -



bye embee-ra embi e - mbi dda-la dda-la mu ba-ntu ba-nge a-ba-bo-na-bo - na mu Mi-s-ri. Mpu - li-dde, mpu-li-dde



o - ku-kaa-ba kwa-bwe, mpu - li-dde, mpu-li-dde o - mu-la-nga gwa-bwe nga ba-nsa-ba mba-nu-nu-le




mu bu-ddu bwa-bwe. Ma-nyi bu-lu-ngi o - ku-bo-na-bo-na kwe ba-li - mu. Nsa - zee-wo, nsa -



zee-wo o - ku-ba-nu-nu - la mu mi-ko-no gy'a-ba Mi-s-ri. nja ku-ba-ggya mu nsi eyo



mba-we enda-la enga-gga, e-nga-zi dda-la ennyo. E-ku-lu-ku-ta ama-ta, n'o-mu-bi-si ogw'e-nju-ki omu -




ka. Ka-ti eri mu Ba-ka-naa-ni, Ba-hi - ti, A - mo - ri - ti, Pe - ri - zi - ti, Hi - vi - zi - ti




Je - bu - zi - ti, be ba-su - la - mu. Jja-ngu nku-tu-me dda-la mu maa-so ga Fa-ra-wo,



jja-ngu nku-tu-me le-ka ku - tya. Nku-tu - ma wa Fa-ra-wo, o-jje aba-ntu ba-nge mu ka-be-nje ke Mi-s-ri



Ba-ba-tu-ntu-za nnyo, ba-ba-la-nga gwa-ki? Ba-ba-sii-bya mu nni-mi-ro!



Musa Nze ani? Nze ani a - ge - nda ewa Fa - ra - wo o - mu-te - mu?



A - baa - na ba Is - ra - e - li, na - ba - ggya ntya mu Mi - si - ri?



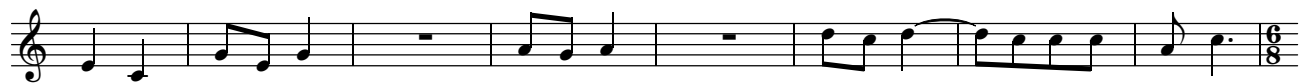
Bwe ba - na - mbuu - za nti Ka - to - nda aku - tu - mye y'a - ni?



Le-ka ku - tya Mu-sa, le-ka ku - tya Mu-sa. Njaa ku-ge-nda naa-we. Bw'o-li-ko-ma -



wo nku-ka-ka-sa, o - li-ta-mpi-ra eki-ta-mpi - ro ku lu-so-zi lu - no. E - ri-nnya



lya-nge: Nze ali-wo, Nze ali-wo, Nze ali-wo emi-re-mbe gyo-nna.



Ka - to-nda wa I - bra - hi - mu, I-zaa-ke ne Ya-ko-bo. Li-no ly'e-ri-nnya lya-nge



mu ma-za-dde n'a-ma-za-dde go-nna. Kyo - kka mma-nyi Fa-ra-wo a - jja ku-gu-gu-ba,



nja ku - mu - la - ga obu - yi - nza bwa - nge, a - li - rwa edda n'a - ba - ta.



Si-ri mwo-ge - zi Mu-ka-ma wa-nge, si - ri mwo-ge - zi, si - ri mwo-ge - zi Mu-ka-ma



wa-nge. Si - ri mwo-ge - zi nta-ma-ta - ma nnyo. Na-tuu - sa ntya obu-ba-ka bwo?



Si-ndi-ka mu-ntu mu-la - la, nze si - bi - yi-nze. si - ndi-ka mu-ntu mu-la - la.

Katonda

Mu - sa, Mu - sa le-ka ku-daaa-li-mba nze aku-tu-ma
 nze mpa o - kwo-ge-ra n'o-bu-ta-wu-li - ra, nja ku-ya-mba gge ng'o-yo-ge-ra; e - ra nku-bu-li-re
 by'o-tee-kwa okwo-ge-ra. No-na Aroo-ni mu-ga-ndaa wo, ye mwo-ge-zi mu-lu-ngi
 y'a-na-yo-ge-ra - nga eri aba-ntu mu li-nnya lyo. Na-nge na-ba - ya-mba-nga mu-le-ke ku - tya.

7 Aria

Musa asisinkana Aarooni

Musa

A-lu - wa Mu-ka-m wa-nge, a-nda-bi-ki-dde Mu-to-nzi wa-nge, a-lu - wa? A-lu -
 wa Ka-to-nda ow'a-maa-nyi, mu-lwa-nyi ow'e-ntii-sa, lu-wa-ngu-la nta-lo, Ye a-lu-wa? a-lu -
 wa? A-nda-bi-ki - dde Ka-to-nda wa ba-jja - jja-nge, ne mpu-li-ra n'e-ddo-boo-zi ery'e-ki-tii-bwa
 kye! Oh! Mu - li mpu-li-ra nti-dde nnyo nga nju-gu-mi-ra, kyo - kka essa-nyu nku-ga-mbye,
 a-lu-wa?
 li-ndi bu-bi olw'e-byo bye nda - bye. O-mu-ka - ma aga-mba nti tu-dde'e Mi-si-ri.
 "E-ya-li aku-noo-nya oku-ku - tta lwa-te-ma dda. Ge-nda ewa Fa-ra-wo omu-ga - mbe essaa-wa y'e-yo,
 le-ka aba-ntu ba-nge ba-ge - nde ba-nge bwaa-ya; ba-ta-mbi-re nze Ddu - nda nga bee-ba-za aba-kuu-mye

ku nsi. Le-ka ba ge - nde. Le-ka ba - ge - nde
ba - ge - nde, ba - ge - nde

Batambulako

Musa

Kyo - kka mu-ganda wa-nge nzi - ra ntya'e Mi-si-ri? Nzi - ra ntya'e Mi-si-ri? Mbee-ra mu-lo-ge?

Mi-si-ri nga ya-nta - ma, ya-nka-bya aga-jju-lu-jju-lu. Maa-ma y'a-nsi-ba mu ki-bbo ng'a-ti-dde

oku-ntu-gu-mbu-la. Na-su-la-nga mu mpee-wo ng'a-ma-zzi ge Mi-si-ri gaa-sa-mye oku-mi-zza omu - su.

Ha! o - bu-ka-mbwe bwa Fa-ra-wo na-mu-zi - sal Ha!

E-ki-sa eki-su-sse kya Ddu-nda atu-lo-ko - la! Mu-wa-la wa Fa-ra-wo y'a-nzi-gya mu ma-zzi ne nna-ma.

A-ba-ntu bo ba-wo-nye essu-ngu lya a-ra-wo omu-te - mu, a-ba-ntu bo ba-wo-nye e-ffu-ga bbi ly'o-mu Mi-si -

ri na-mu-zi-sa. Nja ku-lwa-na. A - maa-nyi ga Ka-to-nda ga-ndi - ko, nja ku-lwa-na.

Aa-roo-ni gi-ra tu - ge-nde. tu - ge-nde, tu-nu-nu-le ba-ga-nda ba-ffe.

Muka Musa

Tu-la - ga wa sse-bo? Tu-la - ga wa sse-bo, nze n'a-baa-na ba - nge?

Mi-si-ri te - ri-na ka - lu-ngi etwaa-la ba-la - mu. Ssi gye wa-ddu - ka Mu-sa nga ba-ku -

noo-nya? Ka-ti we-si - ze ki? Mma-la ga - daa-ga olwa baa-na n'o-mwa-mi ng'a-ba-bu -

zee-ko. Ndi-dda-wa? Naa-we mwa-mi wa-nge, mwa-mi wa mu-saa-yi,

a - ba-la - be bo oli-ba-dda - wa? Mpu-li - ra aba-wa-gu-za nga aba - bbi, mpu-li -

ra aba-ta-mbu-la ng'a-ba-te - mu. Mu - sa tu-na-dda-wa ffe lee - ro/

Musa Aarooni

Nja ku-lwa-na a - maa-nyi ga Ka-to-nda ga-ndi - ko, nja ku-lwa-na. A-nnu-mba gwe ssi-ma-nyi

y'a-ni? Nze nee-si - ga Mu-ka-ma annya-mba; nze nee-si-ga Mu-ka-ma annya-mba.

8 Chorus: Mponya

Bajja ku stage

Mpo - nya, mpo - nya aba-la - be ba-nge a - ba-nnu-mba, mpo - nya, mpo -

nya aba-la-be ba-nge a-ba-nnu-mba mpo - nya, mpo-nya, mpo - nya aba-nnu-mba. Mpo - nya, mpo-nya, mpo -

nya aba-ja-mbu-la. Mpo - Mpo - nya Mu-ka-ma wa-nge aba - ko-zi b'o-bu-bi, mpo - nya Mu-ka-ma wa-nge aba -

sa - jja b'o-mu-saa-yi, baa-ba-no ba-lii-mi - sa obu-la-mu bwa-nge. Baa-ba-no b'a-maa -

nyi ba-wo-nde-ra, ba - nee-to - lo-dde. Mu nze te-mu-li ki-bi Mu-ka-ma



wa-nge, Mu nze te-mu-li mu-sa-ngo, te-mu-li mu-sa-ngo. Ba-nna-nga bu-so-mi bwa ddi-ni Mu-ka-ma oma -



nyi ggwe. Ba-nna - nga ki-ga-mbo kyo, ne ba-fu-bu-tu-ka oku-nnu - mba. Ti-we-ba -



ka Mu-ka-ma wa-nge nzi - ru-ki-ri-ra. Ti-we-ba - ka Mu-ka-ma wa-nge. Jja-ngu olwa-ne Mu-ka-ma



wa-nge Ka-to-nda w'a-ma - ggye, Mu-ka-ma wa-nge, jja-ngu olwa-ne. Ba-nnu-mba Mu-ka-ma



wa-nge ba-nnu-mba A-nkuu-ma ye ggwe Zuu-ku-ka Mu-ka-ma wa-nge, ga-bo-ne-re -
Bo-nna ba-swa - le.
Ba - la - be ba - nge
Ba - me - ggu - ze eri



ze ama-wa-nga go-nna. To-ba-saa-si-ra, to-ba-saa-si-ra aba-sa-jja ab'e-nkwe, to-ba-saa-si -



ra. Na - ye ggwe Mu-ka-ma o - ba-se-ke-re-ra, na - ye ggwe Mu-ka-ma o -



ba-se-ke-re-ra nnyo. A-ma-wa-nga go-nna to-ga-la-ba-mu ka bu - ntu. A -



yi obu-zi - ra bwa-nge, a - yi Ka-to-nda wa-nge; e-ki-go kya-nge Nnaa-ku-ssa-ko omwo-yo



ggwe Mu-ka-ma wa-nge; nnaa-ku-ssa-ko omwo-yo. Ggwe ku-saa-si-ra kwa-nge



o-mpu-li-dde mu bu-yi-ni - ke n'o-nku-ba-gi - za. Ndi - yi-mba, ndi-yi-mba-nga o-bu-yi-nza bwo Mu-ka-ma

wa-nge, nze ndi-ja-gu - za ku ma-kya olw'o-bu-ya-mbi bwo. Ndi - O - nfuu-ki-dde e - ki-go eki -
nywe-vu. O - nfuu-ki-dde eki-ddu-ki-ro kya-nge. O - A - yi obu-zi - ra bwa-nge
nnaa-ku - yi-mbi-ra ku ndo - ngo Mu-ka-ma wa-nge, nnaa-ku - yi-mbi-ra ku ndo -
ngo, ki - go kya - nge. ngo, mu kwe-sii-ma ewa Ki-ta - ffe gy'a-li mu ggu - lu.
a - nsaa - si - dde.
nze mpa - ngu - dde.

9 ACT II: Okubonabona kw'aba Israeli

Ku migga gye Misiri

Duet Bakyala

Ku mi-gga gye Mi-si - ri, ku mi-gga gye Mi-si - ri gye twa-tuu -
Ku mi-gga gye Mi-si - ri, ku mi-gga gye Mi-si -
la nga tu - li - ra. Ku mi-gga gye Mi-si - ri
ri A A A A
Mu nzi-ba-zi - ba z'e - yo mwe twa - wa-ni - ka endo-ngo za - ffe. A-ba-la-be
A A

ba - ffe ba-tu-nyo - ma, ba-ku-daa-li - ra ffe ne ba-zii-muu - la, baa - tu - la - bya eza

Kyo-be ne ba-tu-sa - ba tu-yi - mbe; ku mi-gga gye Mi-si - ri
ku mi-gga gye Mi-si -

ku mi-gga gye Mi-si - ri o - wa Baa-tu-sa - ba ennyi-mba
ri, ku mi-gga gye Mi-si - ri o - wa

za Si - o - ni Ha! tu -
e - za Si - o - ni Ha!

yi-mba tu - tya olu-yi-mba lw'O-mu-ka - ma mu nsi engwii - ra. Tu - yi-mba tu - tya
o -

tu - yi - mba tu - tya ennyi-mba z'O - mu-ka - ma mu nsi engwii - ra.
wa, o - wa

DC.

A - yi, A - yi A - yi A - yi Mu-wa - la we Mi - sri na-mu-zi -
 sa. Wa mu-ki - sa a - li-ku-sa-su - la e - nna-ku enku-mu z'o - tu - la -
 wa mu-ki - sa, wa mu-ki - sa
 bi-zza. Wa mu-ki - sa, wa mu-ki - sa a - li - ddi - ra obwa-na bwo
 wa mu-ki - sa, wa mu-ki - sa
 n'a-bu-u-ntu - la ku nja - zi. Je-ru-za-le - mu, Je-ru-za-le -
 mu o-nnu - mya omwo - yo. Je-ru-za-le - mu, ki-ka-fuu - we o - ku - kwe-ra-bi -
 ra. O - ba-nga nkwe-ra-bi - dde, o-mu-ko-no gwa-nge gwe-ra-bi - rwe gu-ka -
 le nya-bu - la, gwe-ra-bi - rwe, gwe-ra-bi - rwe gu-ka - le nya-bu - la. O-ba si -
 ku - jju-ki - ra, o - lu - li - mi lu-nkwa-ti - re ku mi-mi - ro. O - ba - nga
 Je-ru-za-le - mu ssi gwe nki - za, ssi gwe nki - za bu - li ssa-nyu lyo-nna
 Je-ru-za-le - mu, Je-ru-za-le - mu o - nnu - mya omwo - yo

o - nsa-nyu - sa oku-si-nga byo-nna. A - yi a - yi Mu-ka - ma jju-ki -
Je-ru za - le - mu

ra o - lu-na-ku olw'o-no Je-ru-za-le - mu. Ti - we - ra - bi - ra, ti -

we - ra - bi - ra baa - na bo, ne Je - ru - za - le - mu e - ki - bu - ga kyo.

10 Chorus: Bakitaffe baweddewo

Oh! _____ ba-ki-ta - ffe ba-we-dde - wo ne ba-nnya - ffe ba-wu - lu

ba dda. Tu-jee - ra ku nsi tu - li ba-mu-le - kwa. Tu-li mu ku - kaa - ba aga-ju - lu - ju -

lu, a - ga-ju-lu-ju - lu. 1. Oh! _____ Mu-ka - ma la - ba eki-tu - gwi-ri - dde

Tu-tu-nuu-li - re o - la - be bwe-tu - fee - be - ze - bwa. O - bu - si - ka bwa - ffe

a-ba-gwi-ra ba-bu-tu - tte, ba-bu-nya - ze bu-we-dde. E-nnyu-mba za - ffe bi - fu-lu-kwa aba -

ka - fii - ri ba-zi-nya - ze nya - bu - la, aba - ka - fii - ri ba-zi-nya - ze. Tu - bu-ngee -

ta mu nso - zi, mu bi - bi - ra; n'a-ma - zzi obu - zzi ga-sa-su - lwa, n'e - nku za - ffe na -

zo tu - zi - sa - su - la. 2. Oh! _____ Mu-ka - ma la - ba eki-tu - gwi-ri - dde, dda - la Mu-ka -

ma o - twe-ra-bi - dde? To-so-bo - la ku - twe - ra - bi - ra mi - re-mbe na mi -

re-mbe, mi - re-mbe na mi - re-mbe, mi - re-mbe na mi - re-mbe. E - ki-kko-li - go ku nsi-ngo

za-ffe ki-tu-li bu - bi, ba - tu-bo-nya-bo - nya oku-ka-ma - la; ba-tu-ko-ze - sa ku-tu-zi -

sa awa-ta - li ku - wee-ra. Ba-ki-ta-ffe ba-yo-noo - na ne ba-ggwa-wo,

ne ba-ggwa-wo te-ba-lii - wo, ba-ggwa-wo ffe twe-ti - sse emi-sa-ngo gya- bwe,

e - gi - tu-nyi - ga oku-ka-ma - la *D.S.* 3. A - ba - ddu la - ba ba-tu-fu - ga. Te-wa-li

n'o-mu, te-wa-li n'o-mu a - ba - tu-wo - nya tu-na-dda wa? Tu-na-dda

wa aba-ffe! A - nti n'o-ku-fu - na aka-me-re we-ssa mu ka - bi. Ki - ba kwa-nga - nga ki-ta-la

kya mu ddu - ngu. O-mu-bi-ri gwa-ffe gu-bu-gu - ma ng'e-kyoo - to, o - lw'o-mu-su-jja

gw'e- nja - la. E - mi - ti - ma gya-ffe mi - rwa-dde. A-maa-so ga-ffe

ga - zi - bi - ri - ra; na - ye gwe Mu-ka - ma o - si - ga - la - wo emi-re-mbe



gyo-nna. Na-mu-lo-ndo yo ya mi-re-mbe gyo-nna gyo-nna gyo-nna.



4. Oh! Oh! O - wa a - ba-kya-la ba-ffe ba - ba-no-nye! N'a-ba-wa-la



embee-re-ra ba - boo-noo-nye. O - bwa - na obu-to ba - bu-tta. O - bu-le-nzi bwa-ffe bu -



to-ndo-ke-ra mu kwe - ti - ka enku enzi - to ennyo. A - ba-vu-bu - ka ba-ba-ko-ze -



sa ng'a - ba - ddu mu ku - sa enga-no. Ba-zee-yi ba-ffe ba-bo-nye-bo - nye nnyo



ne ba-ka - ta-gga, na - bo te-ba-lu - to-nde. 5. Ba-jja - jja - ffe be ba-yo -



noo-na ne ba-twa-li - bwa ezzi-ra-ku - mwa, ne ba-zi-ki-ri - ra oku-mu okku - mu.



Ffe twe - ti - sse omu-sa-ngo gwa-bwe, lwa - kki? Lwa - ki tu-bu-nga - bu-nga bwe tu - ti?



A - ba-ddu ba-ffe ba - bo ba-tu-fu - ga. Te-wa - li, te-wa - li



te-wa - li ffe ana-tu - taa-sa. O - bwa-ffe bu-ko - mye, e-ssa-nyu li - we-dde!

11 Chorus: Katonda Abatumidde



Musa Ka-to-nda wa ba - jja - jja - mmwe I - zaa-ke ne Ya-ko - bo a - ba-tu-mi - dde.



Ka-to-nda wa ba - jja - jja - mmwe I - zaa-ke ne Ya-ko - bo a - ba-tu-mi - dde.



"O-yo ali - wo" y'a-nda-bi - ki-dde n'a-ntu-ma bi - no: "Nda-bye enge - ri embi ennyo



A - ba-mi-si - ri gye ba-ba-tu-ntu - za mbi nnyo, nkya-mu nnyo



nu-nndu. Nte - se - zza oku-ba-nu-nu - la nte - se - zza



oku-ba-nu-nu - la mu mi-ko-no gya-bwe. Mma-li - ri - dde nja ku-ba -



nu-nu-la, nja ku-ba - nu-nu-la mba-twa - le mu nsi e - ku - lu - ku -



ta, e - ku - lu - ku - ta omu-bi-si o-gw'e-nju-ki, e - ku - lu - ku - ta omu-bi-si



o-gw'e-nju-ki; nja ku-go-lo - la omu-ko-no nze mba-lo-ko - le. Naa-ko-la ebi - tii-sa eby'o -



bwe-na-nya nze mba-lo-ko - le. Mu - naa-ba ba-ntu ba-nge na-nge ne mba Ka-to-nda



wa-mmwe. Mu - naa-ba ba-ntu ba-nge na-nge ne mba Ka-to-nda wa-mmwe."

12 Solo: Katonda Ayogera



Mu - nywe-re ba-ntu ba-nge, mu - nywe-re. Mu - nywe-re aba-ntu ba-nge mu - nywe-re. Te-mu-tya



mmwe mu-nywe-re te-mu-tya mmwe mu - nywe-re; te-mu-tya nywe-re e-ya-ba - wa eri-nnya nze mba-ga -



mba. E - ya-ba - wa eri-nnya nkyaba-kuu-ma. Zi-ba-sa-nze aba-ba-la - bya enna-ku aba-bi abo.



Zi-ba-sa-nze aba-sa-nyu - ka nga zi-ba-sa-nga, ba-ka-nka-ne, ba-kaa-nka - ne aba-sa-nyu-ka nti mu-gu -



dde. E - bi-bu-ga bya-bwe ebya-tu-ntu-za aba - to ba-mmwe. Bi-ka-nka - ne, zi-ba-sa-nze



n'e-ki-bu-ga kya-bwe mwe ba-fii-ra, ki-ka-nka - ne nga gye baa-ko - mya oku-sa-nyu-ka nga zi - ba -



so-nga. Ne nna-ku ya - bwe gy'e-ne-ko-ma, ba-na-gi - sa-nga, mu ki-bu-ga kya-bwe. E-ne-ba -



ka-bya, gwe ba-le - ke ba-na-ki-ra-ba. Ggwe nno Je-ru-za - le-mu sa-ga-mbi - za.



Tu-nuu-li-ra ebu-va-nju - ba wee-ro-le-re. La - ba essa-nyu eri-va ew'O-mu-ka - ma li-tuu-se mu ggwe.



Sa-ga-mbi-za, sa-ga-mbi - za, sa-ga-mbi-za a - baa-na bo ba-na-ko-ma-wo gy'o-li. A-baa-na bo ne



be - ta-mbu-li-ra, ba - na-ko-ma-wo baa-bo ba - na-dda, ba-na-dda o - ku-va ebu-va-nju-ba



n'e-bu-gwa-nju-ba. Kye-njo-ge-dde ki-ja ku-tuu - ka ssi-ri-mba kye-njo-ge-dde kya ma-zi-ma

nnyo. Sa-nyu-ka a - nti eki-tii-bwa ky'O-mu-ka-ma ki-na-ku-bi-kka. Yee, ggya-ko eki-re-mba
 eky'e-nna-ku. Ggya - ko eki-re-mba eky'o-ku-kaa-ba, kya-ki? Ssaa - ko omu-na-gi-ro o-gw'e-ki -
 tii-bwa ntuu-se Ka-to-nda wo. Ngo-bye nku - twaa-la mu ssa-nyu lye-re - re. Sa-ga-mpi-za, nku -
 tu-tte mu ki-taa-ngaa-la eki-ma-sa-ma-sa ku-ba ndi mwe-nka - nya, e - ra ndi wa ki - sa.

13 Chorus: Katonda wa Bajjajja

Refrain

Ka - to-nda wa ba-jja-jja I - bra-hi - mu Ka - to-nda wa ba-jja-jja - ffe I - zaa-ke
 ne Ya-ko-bo Ka - to-nda wa I - bra - hi - mu, I - zaa-ke ne Ya-ko-bo a - te-nde-re-ze - bwe, a -
 te-nde-re-ze - bwe-nga e - mi-re - mbe. A - nti ajju-ki-ra e-nda-gaa-no
 ye e-y'e-mi - re-mbe gye y'a-ku-ba ng'a-la - yi - ri - ra I - bra-hi - mu, I - zaa-ke ne Ya-ko-bo
 ng'a-ba-suu-bi - za oku-ba-ggya mu Mi-si-ri, a - ba-we Ca - naa-ni bu - be bu-si-ka bwa-ffe
 A - te-nde-re-ze - bwe-nga ata-tu - su-dde. A - te-nde-re-ze - bwe-nga enna-ku
 zo-nna. bwe-nga, a - gu-lu-mi-zi - bwe-nga e - mi-re-mbe gyo-nna.



1. Mwennamwe-ba-ze Omu-ka-ma, mu ko-woole erinnyaIye. Mu-buli-reama-w-nga e-bi-kuuno byonaby'a-ko-ze.



2. Mwennaerinnya ly'O-mu-ka-ma mu-li-weeki-tii-bwa. Mu-sanyu-keaba-lu-ngi. Mumu-noo-nye ngamu-jagu-za.



3. O-bu-yi-nza bw'O-mu-ka-ma mu-bu-te-nde, bu-ngi. Bu - li ki-mu aki - tuu-sa. Kye-ya-la-gi - ra ki-ko-le - bwa



4. A - maa-nyi mu-ga - noo-nye e - w'o-mu-yi-nza Ddu-nda. Mu-fu-be oku - nywe- za Ki - ta-ffe bye ya - ga-mba.



5. Bi - kuu-no by'a-ko - ze oyo mu - bi-jju-ki-re na-mmwe. E-nna-mu-la ye eyo ntuu-fu mu-gi - kwa-te

14 Duet: Musa ewa Farawo



Fa - ra - wo ka-ba-ka wa Mi-si - ri. Na-nta-le - mwa Fa - ra - wo



ka-ba-ka wa Mi-si - ri, ma-gu - ru-nnyo - ndo. mu-ka - ma aku-ga - mbye, Ka -



to-nda wa Is - ra - e - li "Le-ka aba-ntu ba-nge ba - ge-nde Fa - ra-wo, le-ka aba-ntu



ba-nge ba - ge-nde." "Ba-ge-nda mu ddu - ngu, ba-ge-nda mu ddu - ngu ba-ku -



ze emba-ga ya - bwe, ba - ge - nda mu ddu - ngu, ba - ge - nda mu ddu - ngu.



Mu-sa? Mu-sa, Mu-sa Ka-to-nda ki oyo gw'o-yo-ge-ra

ko aba - ffe? Mi-si-ri eri - na ba-ka - to-nda baa - yo. Ka-to-nda ki oyo

gw'o-tu-bu-li - ra aba - ffe? Nze Fa-ra-wo gw'o-la-ba ndi mu-zzu-ku-lu wa ba-lu-baa -

le gwe ba-ssa-wo. A - te oyo Ka-to-nda wa Is - ra - e - li y'a - ni?

Y'a-te nno nze Fa-ra-wo nso-bo-la ntya oku-go-nde - ra Omu-ka-ma nze gwe si-ma - nyi?

E - ra mba ku-mu-ma - nya, ki-ka-fuu-we oku-le-ka aba - Is - ra - e - li, o -

ku - nvaa - ko. Bi - vee - ko, bi - vii - re - ko dda - la; bi -

vee - ko, bi - vii - re - ko dda - la bi - vee - ko.

Musa Ka - to-nda, Ka-to-nda oyo owa Ba-yu-daa-ya ye y'a-ntu-mye oku-ku-ga-mba: "A-ba-ntu ba-nge

ba-le-ke ba-ge-nde o-ba-ga-za ki? A - ba-ntu ba-nge ba-le-ke ba - ge-nde o-baa-ga -

za ki? ba-we enna-ku ssa - tu ba-ge-nde mu ddu-ngu ba-ge-nde mu ddu-ngu ba-ta-mbi-ri-re

oyo Mu-ka-ma wa-bwe e - ra Ka-to-nda wa-bwe. Ba-le-ke ba-ge-nde mi-re - mbe. Bw'o -

noo-gaa-na ka-wu-mpu - li to-mu-wo-ne, bw'o - noo-gaa-na e - ki-ta - la ki-na-ku-lya.

Le - ka aba - ntu ba - nge ba - ge - nde Fa - ra - wo. Le - ka aba - ntu ba - nge ba - ge - nde.

Farawo

Mu - sa ne Aaroo-ni mu-za-nnya n'a-ni? Mu-saa-ga n'a-ni? mu-ba-dde ki? A - ba -

ntu mba-ggye nze ku mi-ri - mo egya- nge, mbu ba-ge-nda kwe-ggwe-ra! Mu-saa-ga n'a-ni? Mu-ba-dde

ki? E - mi-ri-mo gye gi-ba-bu-ze mpo-zzi kwe ku-do-ngwa n'e-byo. Mu-na-nda-ba aka-nfaa -

mu! Mu-nya-mu - ke mu-ge-nde mu-ko - le. Mu-nya-mu - ke mu-li ba - na -

fu nnyo. fu nnyo mmwe nno, a - ba-dda mu gga - ya - lo. La - ba a -

ba-ma-wa-nga ba - tu - yi-nze obu-ngi, be-yo-nge-ra omu - we-ndo nya- bu - la te-ba-ke-ndee-ra.

Mu-ba-me ama - zzi, te-mu-ba-wa ssu-bi. Ba-ko-le ama-to-ffaa-li nga te-mu-ba-wa ssu-bi.

Mu-ba-le-ke, mu-ba-le-ke be - noo-nye-ze-nga omu-ddo. Kyo-kka omu-we-ndo gwo te-gu-sa-lwa ogwa ma -

to-ffaa-li o-gu-ba-dde - wo. Ba-na - fu, ba-na - fu nnyo, kye ba-va ba - do-ngwa mbu tu-ge-nde

mu ddu-ngu tu-ta-mpi-ri-re Ka - to-nda! Nya-bu-la mu-bo-nge - re emi-ri-mu ba-ve ku bu -
li-mba. Te - mu-ba-saa-si-ra, te - mu-ba-saa-si-ra ba-zze mu lu-ga-mbo.

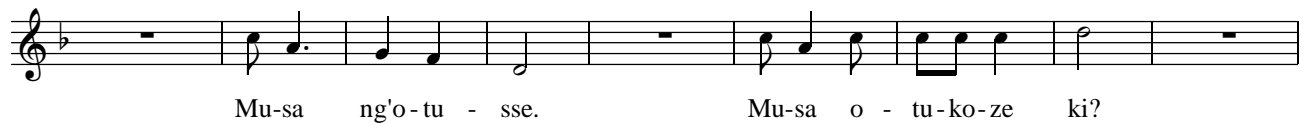
Musa addamu obubaka "Farawo"

Aaroni ne Musa

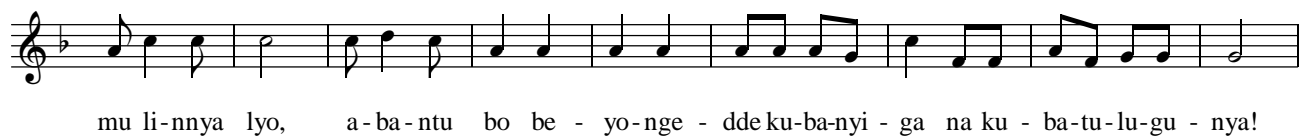
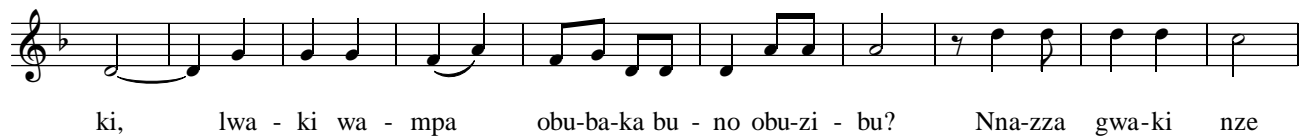
Mu - sa-jja Fa-ra-wo afuu-se ngo! "Te - mu-ba-wa ssu-bi, te - mu-ba-wa gge-zi ba - ge-nde mu nsi-ko be -
noo-nye-ze o-mu-ddo; kyo-kka ama-to-ffaa-li aga-ba-sa-li-rwa ba - tee-kwa bu-tee-kwa oku-ga-we - za!"

15 Chorus

Hi! _____ Mu - ka-ma wa - ffe Mu-sa oko - ze ki? O - two-noo - nye
tu-na-dda - wa! Tu-na-dda - wa Fa-ra - wo ataa - mye zi-tu-sa - nze e - za - sa -
nga lu-mo - nde mu tta - ka. Ka - le Omu-ka - ma atu-la-mu - le. Ggwe otu-kya-yi - si-zza
ewa Mu-ka-ma wa - ffe Fa - ra - wo, tu-mu-wu-nyi - ra ffu - mbe. Ye ggwe ka-na-lu -
zaa - la. Ye ggwe ka-bi - so-mba. Ggwe ota - dde eki-ta - la
mu mu-ko-no gwe a - tu - we-mme - nte. Mu-sa o - tu-ko-ze ki?



16 Solo: Essaala ya Musa



n'o-mu-ko-no gwa-nge ogw'a - maa-nyi a - na-ba-go-ba. Mu-mu-le-ke mmwe, ke nna-mu-kwa-ta-ko

n'o-mu-ko-no gwa-nge ogw'a - maa-nyi, a - na-ba-go-ba ng'a-ti-ri - bi - ra.
Refr. Leka abantu...

17 Chorus: Ebibonyobonyo bye Misiri

1. O-ku-bala-ga obu-yi-nza Ddu-nda bwe nni-na, nja ku-soo-ke-ra ku ma-zzi nga-ta-ba-ngu-le,

ga-ba-fuu-ki-re omu-saa-yi ga-ba-kaa-yi-re; n'e-bi-bee-ra-mu byo-nna bi-fe lwa ka-bi.

Mu-sa n'a-ku-ba ama-zzi ne ga-myu-ka go-nna, n'e-bi-bee-ra-mu byo-nna ne bi-fa lu-mu.

Tu - fu-dde, tu-fu-dde e-nka-la-ma-ta enzi-ta. Tu - fu-dde, tu-fu-dde

e-nka-la-ma-ta enzi-ta. "O-ba mu-fa mu-fe, nze Fa-ra-wo si-jja ku-ga-nya,

Mu-sa by'a-sa-ba. Nze nngaa-nyi" 2. Mu-sa n'a-ddi-ra olu-ba-tu lw'e-vvu erya-su-ze

n'a-li-ka-su-ka mu bi-re ne li-taa-mbu-la oku-te-mu - la e-bi-so-lo n'a-ba-ntu ne ba-ta-ndi -

ka oku-va ama-bwa. Yo-nna Mi-si - ri ya-wu-nya nnyo n'e-daa-ga; n'a-ba-la-gu-zi ba Mis -

ri ne ba-lwa-la ne ba-sa - ba. "Tu - fu-dde, tu-fu-dde a-ma-bwa aga-kyu-ma; tu -

fu-dde, tu-fu-dde a - ma-bwa aga-kyu-ma." "O-ba mu-fa mu - fe, nze Fa-ra-wo
 si - jja ku-ga-nya, Mu-sa by'a-sa-ba. Nze nngaa-nyi" 3. Mu-sa n'a-ddi-ra omu-ggo
 n'a-gu-go-lo-la, n'a-gu-ku-bi-sa etta-ka li - zaa-le ebi-wu-ka. Ne bi-joo-nye-sa Aba-mis -
 ri n'a-ma-ga-na; n'a-ba-la-gu-zi ba Mis - ri ne ba-ki-tya. N'e-nso-we-ra za-ba-yi-gga -
 nya oku-ka-ma-la. Ne Fa-ra-wo n'a-ju-gu-mi - ra, n'a-yi-ta Mu - sa, n'a-la-gi-ra ba-mwa-mu - ke.

18 Duet

Farawo Mu - ge - nde, mu - ge - nde mi - re-mbe, Ka-to - nda wa - mmwe
 mu-mu-sa-nyu - se nga mu-mu - ta - mbi-ri - ra. Mu-si - ga - le mu nsi mu-no
 te-mu - ge - nda wa - la. O - lu-ma - la nga mu-ko-ma - wo.
Musa E - kyo ssi ki-tuu-fu Mu-ka-ma wa-ffe. E - kyo ssi ki-tuu-fu n'a-ka - mu ku -
 ba ebi-ta-mbi-ro bye tu-mu - wa Ka-to-nda wa-ffe, mmwe Aba-mi-si-ri mu - bye-nyi-nya-la.
 Mwa-ndi-tu - ku-bye n'a-ma-yi - nja nga mu-bi-ra - bye. Ffe tu-ge-nda mu ddu-ngu

mu - tu - le - ke - se. Ffe tu - ge - nda mu ddu - ngu e - nna - ku ssa - tu be ddu,

mu - tu - le - ke - se tu - ta - mbi - ri - re Ddu - nda ye nga bw'a - la - gi - dde.

Farawo

Ha! Mu-sa o - ba-dde ki a - nte-te-za enge - ri eyo. Nvii - ra, nda -

gi - dde nvii - ra. Tu - dda-nga, bw'o-li - ko-ma - wo olu-la-la o - li wa ku - fa.

Musa

O-yo - ge-dde bu-lu-ngi, si-jja ku-dda. O-yo - ge-dde bu-lu-ngi

si-jja ku-dda. O-yo - ge-dde bu-lu-ngi, o-yo - ge-dde bu-lu-ngi si-jja ku-dda.

Si - jja ku - dda gwa - ku - bi - ri, zzi - naa - ku - saa - nga.

19 Chorus

O-mu-zi-raa ogw'a-maa-nyi gwa-va mu ggu-lu, gwa-tta ebi-so-lo bi-ngi era n'e-bi-me-ra.

E - nzi-ge ka-be - jja na - yo n'e-si-tu - ka. Ne zi-rya bu-li ki-ba-la ekya-li ki - ku-ze.

A-ba-zaa-na ba Fa-ra-wo ba-mu-la-bu-la. "Sse-bo to-la-ba nsi yo bwe-zi-ki-ri-ra, ba-le-ke ba-ge-nde.

Sse-bo tu - li mu nzi-ki-za n'e-mi-sa-na yo-nna, ba - le - ke ba - ge - nde tu - zi - ki - ri - ra."



O-ba mu-fa mu - fe nze Fa-ra-wo si-jja ku-ga-nya Mu-sa by'a-sa-ba, nze ngaa-nyi.

20 Chorus: Zibasanze

Solo esooke



Zi-ba-sa - nze, zi-ba-sa - nze mmwe, wu-li - raa Omu-ka-ma aga-mba: La - ba, la -



ba ntee-ka-tee-ka oku-zi-ki-ri - za eggwa-nga li - no ebbi e - ggwe-nyu-fu. Te - mu-ggye- mu



nsi-go za-mmwe ya - dde oku-taa-mbu - la nga mwe-go - lo-dde, e - no ssaa-wa mbi.



Nja ku-ba - ku-nga-nya mwe-nna aba-ntu ba-nge, bu-li omu gy'a-li bu-li omu



ye-nna. Mmwe eggwa-nga Iya Ya-ko-bo na-mu-la - ba nna-ku. A-ba-to - no dda-la ba



ka-wo-na-wo. Nja ku-ba - ku-nga-nya mu ki-si-bo ki - mu, ng'o-mu-su-мба mu ki-si-bo



kye. Te-wa-li, te-wa-li ana-ba-tii-sa, naa-ba-lo-ko - la.

21 Solo: Essaala ya Musa



Mu-ka-ma mu-gu-lu-mi-za nnyo. Ka-to-nda wa-nge e - ya-nga-nza oyo e-yaa-nsi -



ka gy'a-li na-ta-ga-nya oyo ba-la-be ba-nge abo ku-nse-ke-re-ra. A - saa-na ate-nde-bwe, a -



saa-ni-ra ku-te-ndwa Mu-ka-ma e-ya-mpu-li-ra bwe nna-mu-yi-ta. E-ya-nzi-gya mu bu-ya



n'a-mpo-nya eki-kwa-nga ky'a-be-bi-kka e ma - go-mbe mu bu-ya. Mu-ka-ma mu-mu-yi-mbi - re e-tte-ndo lye.



Mmwe mu-lye-ko-le e-ri-nnya lye ettu-ku-vu. Mmwe mu-lye-ba - ze. A-mi-na amii-na atwa-ga-la ku-fa, A-mi -



na amii-na atwa-ga-la ku - fa, nda-ba, o - bu-su-ngu bwe bu-yi-ta ma-ngu E - ki-sa eki-kye ki-si-ga-la -



wo emi-re-mbe gyo-nna. E - ki-ro bwe ki - jja n'e-nna-ku, e - mi-sa - na ku - ba kwe-ja -



ga, zi-ba nse-ko. Bwa-mpa-ni - ri-ra Mu-ka - ma si-nye-nye-bwa. O - lw'e-ki-sa kyo ky'o-mpa



nze mba mu-gu-mu; na - ye bw'o-nkwe-ka amaa-so go gwe nga nte-re-bu - la nga nti-ri - bi -



ra. Ki-ta-nge ya-ngu - wa oku-nnya-mba, gy'o-li nze gye nzi-ru-ki - dde, gye nzi-ru-ki - dde.

Farawo atuuka

22 Duet



Mu - ge-nde, mu - ge-nde mi - re-mbe mu - ge-nde. Ka-to-nda



wa-mmwe mu-mu-sa-nyu - se nga mu-mu - ta - mbi-ri - ra. Ye mu - ge-nda ba-me - ka?



Ffe-nna tu - ge-nda, a-ba-ku-lu n'a-ba-to, ffe-nna tu - ge-nda. A-ba-le-nzi

n'a-ba-wa-la, ffe-nna tu-ge-nda. E-bi-so-lo n'a-ma-ga-na

byo-nna bi-ge-nda. E-ntu-jjo y'o-mu-ka-ma gye tu-ge-nda-ko. E-kyo kye-te-

gee-za. Tu-ge-nda kwe-ggwe-ra, tu-ge-nda ku-ntu-jjo.

Farawo

Nku-ku-tte Mu-sa oli-mba! Nki-zu-dde Mu-sa oli-mba, o-li-na Mu-

sa ky'o-kwe-ka. Ka-le aba-to oba-twa-li-ra ki? Ne-dda, ne-dda

a-ba-sa-jja mwe-kka mmwe mu-ba mu-ge-nda mu-si-nza. Mbee-ra oku-si-nza

kwe ku-ba-lu-maa. A-ba-sa-jja mwe-kka mmwe mu-ba mu-ge-nda mu-si-nza.

23 Paska

Recto Tono (Kitontome)

Gu-no omwe-zi gwa bya-faa-yo mu bu-la-mu bwa-mmwe; gu-naa-ba-nga mwe-zi ogu-soo-ka mu ku-ba-la kwa-mmwe.

Bu-li ma-ka ga-gu-le aka-li-ga ka mwa-ka gu-mu. Ka-bu-zi o-ba ka-li-ga aka-sa-jja a-ka-ta-so-bye,

Mu-ka-tte lwa ggu-lo-ggu-lo, o-mu-saa-yi gwa-ko mu-gu-sii-ge ku mi-fuu-be-to gye nnyu-mba za-mmwe;

a-ka-li-ga mu ka-lye ka-la-mba nga koo-kye, n'e-mi-gaa-ti egi-ta-zi-mbu-lu-ku-se, n'e-nva ezi-kaa-wa.



Te-mu-te-re-ka ka-ntu n'a-ka-mu aka-fi-sse. E-bi-si-ga-la-wo mu-byo-kye byo-nna. Mu-ka-lye ma-ngu



nga mwe-si-bye eki-myu n'e-nga-tto za mu-saa-saa-ne, mi-ggo mu nga-lo, ku-no ku-yi-ta kwa Mu-ka-ma;



mwa-na-yi-ti-ra mu Mis-ri, ng'a-tta a-ba-ggu-la-nda. Lu-no olu-na-ku mu-lu-ku-za-nga mu ma-za-dde go-nna.



Wiiki nnamba temu-ko-la-nga mi-ri-mo, mpozzi ogw'oku-fumban'oku-lya. N'e-yo mu nsi e-nda-gaanye mwe mu-genda



na - yo mu - lu - ku - za - nga, na - yo mu - lu - ku - za - nga, kwe ku - yi - ta kw'O - mu - ka - ma.

24 bantu Baaniriza Amawulire Ago



Ggwe dda-la dda-la oli wa bu - yi-nza, gwe-nzi-ri-nga - na Ka-to-nda wa-nge mu-zi-ra-ki-sa ata-sa-ngwa



mu-yi-nza wa byo-nna, nnyi-ni bu-la-mu, ki-ddu-ki - ro kya-ffe a-tu-wa-ngu-za ama-wa-nga go-nna to -



goo-ka. Ggwe eya-bee-ra - wo nga n'e-nsi yo-nna, e-nsi-zi zo-nna te-zi-nna-baa-wo



o - ku-va emi-re-mbe n'e-mi - re-mbe Ggwe Ka-to-nda wa-ffe. O-mu-ntu ggwe omu-zzaa-yo mu nfuu -



u ng'o-la-gi-ra, mu-dde-yo, mu-dde-yo mmwe abaa-na b'a-ba-ntu mu tta-ka mwe



mwa-va. O - li wa bu - yi-nza wa-mma. E - mya-ka lu-ku-mi mu maa-so go, gi-ri-nga olwa

jjo olwa-ka-yi - ta Mu-ka-ma wa-nge, gi - ri-nga e - ki-ro ekya-ka-yi - ta, to - za-nya

o - ba-ma-la-wo nga bee-ba - se aba-zi-gu, o - ku-kee-ra ku nkyā nga ba-li-nga omu-ddo o - gu-kyu-ka -

kyu-ka ku ma-kyā ku - ti gu-dda bu-to, we-bu-zi - bi - ra obu-dde nga gu-wo-to - se gu-we-dde -

wo! Tu-yi - gi - ri - ze, tu - yi - gi - ri - ze tu-ba-le bu - lu-ngi e-nna-ku zaa - ffe.

N'a-ma-ge-zi g'o-mu-ti - ma gwa-ffe ge-yo-nge-re. Ko-ma-wo, ko-ma-wo, Mu-ka-ma

on'o-dda ddi? Saa-si-ra a - ba-wee-re - za bo ffe-nna. Ku ma-kyā ku - ti

tu-jju-ze eki-sa kyo, e-nna-ku za-ffe zo-nna zi-jju-ze eki-sa kyo, tu - zi-ma-le - ko nga tu-ja-gu -

za obu-ta-ma-la. Tu-jju-ze essa-nyu mu nna-ku z'o-tu-wa. Tu-jju-ze essa-nyu ne mu mya-ka egy'e-nna-ku. Nsii -

ma, nsii - ma, nsii - ma Ka-to-ndaa wa-nge by'o - mpa. Le - ka omu-li-mo gwo gu-la - bi -

bwe aba - we - re - za bo e - ra n'a - baa - na bo ba-la-be e - ki - tyi - bwa ky'o - li - na

o - bu-la-bi-ri-zi obu-lu-ngi obw'O-mu-ka-ma Ka-to-nda bu-bee-re ku fe. Bu-ko-le mu ffe

e - mi-ri-mo gy'e - nga - lo za - ffe, gi - tuu - ki - ri - re nnyo, nnyo.

25 Solo: Akaliga ka Paska

Batudde, akaliga akawujje, ekikompe ky'evviini

Musa Ggwe Ka-to-nda wa-ffe o-mu-yi-nza wa bu-li ka - ntu; ggwe eya-to-nda byo-nna ku

lw'e-ki-tyi-bwa kyo. A-ba-ntu bo-nna ggwe oba-wa emme - re ema-la, e - ra n'e-ky'o-ku -

nywa wa - mu n'o - bu-la - mu. O - lwa bi-no byo - nna tu-kwe-ba - za nnyo, ku -

ba-nga oyi-nza byo-nna, byo - nna bi-va wu - wo. O-wee-bwe eki - tyi-bwa mi - re-mbe n'e-mi -

re - mbe. O - wee - bwe eki - tyi - bwa e - ky'o - lu - bee - re - ra.

Mu - too - le mu - lye, ke ka - li - ga ka Pas - ka.

Refr Twe-ya - nzi-za, twe-ya - nze-ge nze-ge. A-wee-bwe eki - tyi-bwa, e-mi-re-mbe gyo-nna.

Musa Ya - hwe a - wee - bwe eki - tyi - bwa Ka - to-nda wa - ffe. *Refr*

Musa (vviini) Mu - too - le mu - nywe ku vvii - ni ye Mi - si - ri. *Refr*

26 Ekiwandiiko kya Farawo kisorwa



Mu-ge-nde ma-ngu ma-ngu, mu-ve mu nsi ya-nge. Mu-ge-nde mu-si-nze KA-to-nda wa-mmwe.



Mu-ge-nde, byo-nna mu-bi-twa-le, a - ba-ntu ba-mmwe, bi - so - lo bya-mmwe, e - bi-ntu bya-mmwe;



mu-ge-nde. Bwe mu-va mu nsi eno mu-naa-ba mu-mpo-nye-zza; naa-ba mba-wo-nye.



Yee, amii-na amii - na, tu-nu-nu - ddwa, yee, tu-nu-nu-ddwa. Tu-mwe-ba-ze Omu-ka -
Tu-mwe-ba-ze Omu-ka -



ma alo-ko-la. Yee, tu-nu-nu-ddwa dda-la dda-la ffe tu-nu-nu-ddwa. Yee, tu-nu-nu-ddwa.
ma aso-bo-la. Yee, tu-nu-nu-ddwa dda-la dda-la ffe tu-nu-nu-ddwa. Yee, tu-nu-nu-ddwa.

27 Chorus: Muteeketeke Entujjo



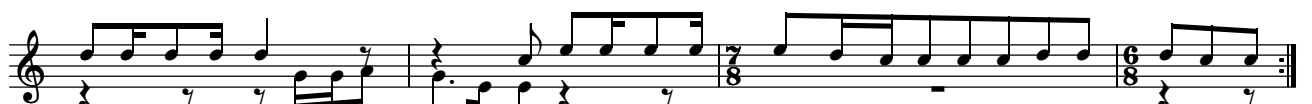
Mu-tee-ke-tee-ke entu - jjo, mu-tee-ke - tee-ke entu-jjo, mu-tee-ke-tee-ke entu -



jjo n'a-ma-ta-bi aga-ju-dde e - bi-koo-la by'e-mi-ti. Mu-yi-se eki-vvu-lu o-kwe-ba-za Ka -



to-nda by'a-ko-ze enku-mu, ha! Ka-to-nda w'a-maa-nyi asaa-na kwa-ga - lwa. Mu-yi-se eki-vvu-lu a -



saa-na kwa-ga-lwa, mu-yi-se eki-vvu-lu a -saa-na kwa-ga - lwa Omu-ka-ma ye mu-lo-ko - zi wa-nge



Mu-ka - ma mu-wa-ngu-nzi e-ri-nnya lye mu-ta-baa-zi, mu-ta-baa - zi mu-ta-baa-zi e - ri-nnya

lye mu-ta-baa-zi, e-ri-nnya lye mu-ta-baa-zi. A-ba-la-be ba-nge ba - ntaa-yi-zza ba -
ba-ka-mbwe

ntaa-yi-za, nga ba-li-nga enju-ki ezi-saa-la ba-ntaa-yi-za, ba-me-ma bu-li-ro mu ma-ggwa, na-dda
ba-ka-mbwe ba - ka - mbwe, ba-ka-mbwe

wa nze na-dda wa, nze na-dda wa, nze na-dda wa zi-nsa - nze. Ba-nsi-ndi-ka mbu nno ngwe ba -

nsi-ndi-ka, mbu nno ngwe, mbu nno ngwe. Ba-si-ndi-sa obu - swa-ndi, ba-nsi-ndi-sa obu -

swa-ndi mbu nno ngwe. Na-ye mu li-nnya ly'O-mu-ka-ma, na-ba-be - te-nta, na-ye mu li-nnya

ly'O-mu-ka-ma na-ba-be - te-nta, na-ye mu li-nnya ly'O-mu-ka-ma na-ba-zi - sa, na-ba-zi -

sa, na-ba-zi - sa. Mu-ka-ma ge maa-nyi ga-nge bwe bu-lo-ko - fu, a-mpa-ngu-za Mu-ka - magemaa-nyi

ga-nge y'a-mpa-ni-ri - ra, a-mpa-ngu-za Mu-ka-ma bu-zi-ra bwa-nge ye Mu-lo-ko - zi a-mpa-ngu-za Mu-ka - magemaa-nyi

ga-nge y'a-mpa-ni-ri - ra, a-mpa-ngu-za Mu-ka-ma a-mpa-ngu - za nsi ye Mu-lo-ko - zi nze mwe-si-ga ku - fa. DC.



O-mu-ka-ma ng'annya-mba, O-mu-ka-ma ng'annya-mba.

Bwe ba - nyi - gi - ri - za, bwe mba nte - re - bu-ka, Bwe
 mba nju-gu-mi-ra, bwe mba nte - re - bu-ka, Mu
 ssaa-wa ey'a-ka-bi, mu bu-dde obw'o-ku-fa, A
 nywe-za ne ngu-ma, ya - mpa obu - wa - ngu-zi,



Ddyo w'O-mu-ka-ma ddyo w'O-mu-ka-ma a-nsi -
 maa-nyi g'a-li - na ga ki-ta-lo, maa-nyi g'a-li - na ga nsu-ssu



tu - dde, maa-nyi g'a-li - na ga ki-ta-lo, ddyo w'O-mu-ka-ma, maa-nyi g'a-li - na ga nsu-ssu te-ga -



te-ndwa, maa-nyi g'a-li - na ga ki-ta-lo, ddyo w'O-mu-ka-ma, maa-nyi g'a-li - na ga nsu-ssu Nda-yi-dde



si - jja ku-fa nja ku-la - ma, nda-yi-dde, si - jja ku-fa nja ku-la - ma. nda-yi-dde



ma Ndi-ro-jja, e - bi-kuu-no by'O-mu-ka-ma by'a-tu-ko-le-dde, ndi - ro-jja
 e - bi-kuu-no by'O-mu-ka-ma



by'a-ko-la mu ba-ntu. Ye mu-ya-mpi ow'a-maa-nyi Mu-ka-ma Ka-to-nda. Nja ku-mwe-ba-za
 Bwe bu-zi - ra bw'a - ba - ngi abe-si - ga Ka-to-nda.
 Ye Mu-lo - ko - zi w'a - bo abe-si - ga Ka-to-nda.



nja ku-mwe-ba-za Omu-ka-ma, na-mu-yi-mpi-ra; na-mu-yi-mpi-ra, na-mu-yi-mpi-ra ku ndo -



ngo na-mu-yi-mpi - ra. Bwe y'a - mbo - ne - re - za Taa-ta te - ya - nzi - ta. Nnyu -
 Nga ngu - dde mu ka - bi Taa-ta y'a - nsaa - si - ra.



mba ya Ya-ko-bo e-ga - mbe, nnyu - mba y'Aa-ro-ni k'e-ga - mbe Yi -
o-ku - saa-si-ra kwe kwa mi-re-mbe gyo-nna, o-ku - saa-si-ra kwe kwa mi-re-mbe



mba Ke-le-zi-a o-ga - mbe, Mu-nzi-gu - li - re emi-rya-ngo
gyo-nna o-ku - saa-si-ra kwe kwa mi-re-mbe gyo-nna. O - mu-ly-a-ngo gw'O-mu-ka-ma



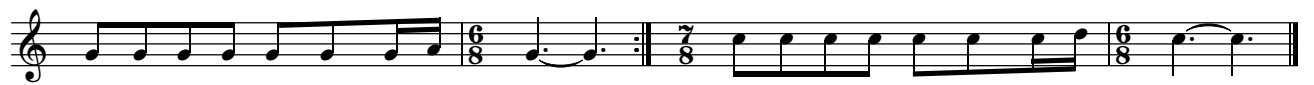
egy'o-bu-tu-ku-vu, nze mwe-mba mpi-ta nge-nde okwe-ba-za Ka-to-nda Tu-ba-wa ka-ti omu-ki-sa
o - mu-tu-ku-vu, nze mwe-mba mpi-ta nge-nde okwe-ba-za Ka-to-nda



ffe nga tu-yi-ma mw'e-yo ennyu-mba y'O-mu-ka-ma eye-yo-le-ka aba-ntu. Ggwe Ka-to-nda wa-nge ando-ko -



la nze nkwe-ba-za, nkwe-ba-za Ka-to-nda Ddu - nda atu-lo-ko-la. Nkwe-ba-za, nkwe-ba-za,



nku-gu - lu - mi - za nnyo nku-te - nda. nku-gu - lu - mi - za nnyo nku-te - nda.

28 Chorus: Sanduku Y'endagaano Etuuka

Oluyimba Iwa Musa



Mu-kwa - te ama-fu-mu n'e-nga-bo mmwe aba-lwa-nyi b'O-mu-ka-ma. O-bu-lwa bu-tuu-se Omu-ka -



ma afu-ngi-zza ka-twe-si - ke ku lw'O-mu-ka-ma. Sse-mo-tya, e-mba-laa-si n'o-mwe-ba-ga-zi aba-ka-su -



se mu nnya-nga be ddu. O-mu-ka - ma mu-me-gga-nyi, mu-wa-ngu - zi, ge maa-nyi ga-nge



bwe bu - lo - ko - fu, lu - yi - mba lwa-nge nze, mu-gu - lu - mi - za nta-ke-ra. Ka-to-nda wa-nge. Ka -

to-nda wa Ki-ta-nge. Mu-gu - lu - mi -za, mu-gu - lu - mi -za nga nte -

nda. nda, nga nsi - nza, nga nnyi - mba emi - re - mbe gyo - nna.

1. Mu-ka - ma mu-wa-ngu-zi ata-la-bwa. E-ri-nnya lye mu-ta-baa - zi. Fa-ra-wo n'a-ma - gaa-li a - bi-ka-su -

se mu nnya-nja, la - ba abe-ba-ga-zi ba-zi - ki-ri-dde, ba-sse ku nto-bo ng'e-ji - nja, te-ba-lu-to-nde

Ba-gga-li-ddwa bo-nna ebu-zi - ba ka-soo-ka ba-tta. Ba-ba-ku-bye ku nso-lo-bo - tto. O-mu-ko-no

gwo ogwa ddyo a - yi Mu-ka - ma nga gwa bu-yi - nza! Gu-me-nye-me-nye omu-la-be. Ka ba-la-be, ba -

swaa-le mu bu-yi-nza bwo oba-ki-nye-ko aba-la-be bo. Ba-gu-dde, o - ba-ma-li-dde-ko obu-su-ngu

bwo ne bu-boo-kya ng'e-bi-su - bi, ne ba-ggwa-wo, ne ba-bu-la. Bwe wa - fuu-wa ku ma-zzi ne

gee-tuu-ma, mu - gga ogu-ku-lu-ku-ta ne gwe-tuu-ma. A-ma - ye-ngo ku ma-zzi ne ga -

kwa-ta; ne ga - kwa-ta, ne gee-tuu-ma ng'e-mpa-gi. Mu-ka-ma mu-yi - nza!

2. Wu-li-ra Fa - ra-wo e - bi-ga-mbo bye by'a-ga-mba: "Ka mba-wo-nde-re, nja ku-ba-sa-nga mba -

to - ba - zze,
zze, na - ba - zza" Ki - bu - ya - ga, ki - bu - ya - ga n' a - ku - nta,
ki - bu - ya - ga, ki - bu - ya - ga n' a - ku - nta n' a - ku -

e - nnya - nja n' e - ba - mi - ra!
nta ata - la - bwa - nga. ne be - bbi - ka ng' e - ki - ko - mo mu ma - zzi age - swa - nta. Mu - ka - ma oli wa bu - yi - nza.

to Chorus below

- 3a. Mu - ka - ma oli mu - ku - lu, oli wa bu - yi - nza ani akwe - nka - na?
- b. Mu - ka - ma oyi - ti - mu - se ebi - kuu - no byo wo - nna by' o - ge - rwa.
- c. Mu - ka - ma wa - go - lo - la omu - ko - no gwo bo - nna baa - mi - rwa.
- d. Mu - ka - ma oli wa ki - sa aba - zaa - na bo ffe - nna twa - la - ma.
- e. Mu - ka - ma aku - le - mbe - ra aba - lo - nde bo mu nju gy' o - su - la.
- f. Mu - ka - ma oli Ka - ba - ka, tu - li ba - bo ffe - nna twa - tu - la.

Chor Ka - to - nda ani? Mu - ka - ma wa - nge, Ka - to - nda ani, ani a - kwe - nka - na? Al - le - lu - ya, al -

le - lu - ya, tu - nu - nu - ddwa. Tu - nu - nu - ddwa, tu - nu - nu - ddwa.

29 Chorus: Mukama Asitudde

O - tyo, o - tyo, Mu - ka - ma asi - tu - dde a - ba - la - be be ka ba - bu - ne emi - wa - bo. Mu - ka - ma asi -

tu - dde a - zze, a - zze a - ba - la - be be ka ba - zi - ne olu - gu - je. Mu - ka - ma asi - tu - dde. Mu - ta - baa -

zi, mu - ta - baa - zi, e - ri - nnya lye mu - ta - baa - zi, mu - ta - baa - zi. Si - tu - dde asi - tu - dde

ba - mu - la - bye - ko aka - ga Si - tu - dde asi - tu - dde O - mu - wa - ngu - zi nta - lo. Ka ba - bu - ne emi - wa - bo si -

a - ba - la - be be enku - mu, ba - kwa - ti - bwe enso - nyi a - ba - mu - kya - wa. A - ba - mu - kya - wa ba -

mwe-te-gu-le nga bu-kya - li. Ba-ta-bu-nka-na ng'e-nvu - mbo, ga-ba-we-dde

ba-ta-bu-nka-na ng'e-nvu - mbo ga-ba-we-dde, ba - saa-nu-ka ng'e-nvu - mbo ku mu-li-ro. A-ba-bi

a - bo-noo-nyi bwe ba - zi - ki - ri-ra ba-tyo. Mu maa-so g'O-mu-ka-ma Ka - to-nda a-ba-tuu-fu

ba-sa-nyu-ki-ra mu Ka-to - nda, a-ba-tuu-fu ne ba-ja-ga-nya mu maa-so ge a-ba-tuu-fu

bee - sii-mi-ra mu Ka-to - nda, a-ba-tuu-fu bee - si - mi-ra mu Ka-to - nda a-ba-tuu-fu

bee - sii-mi-ra mu Ka-to - nda nnyi-ni aba-tuu-fu ba-sa-nyu-ki-ra mu Ka-to - nda ne bee-sii-ma

ne ba-sa-nyu-ka, ne bee-sii-ma ne ba-ja-ga-nya, ne bee-sii-ma ne ba-ja-ga-nya mu maa-so g'O-mu-ka-ma, mu-mu-yi-mpi -

re Ka-to-nda ow'e-dda. zi - tu-jje, zi-tu-jje Mu-mu-yi-mpi-re ku nto - ngoo-li

mu-mu-yi-mpi-re ku nna - nga Ka-to-nda ow'e-dda. Mwa-lii-re, mwa-li - re e-kku-bo, zi -

ree-ta; ng'a-yi-ta-yi - ta mu ddu-ngu, mu-ja-ga - nye w'a-li eri-nnya lye kku - lu dda-la dda-la, mu-ja-ga -

nye w'a-li ye Mu-ka-ma Ka - to-nda w'a ma-ggye. Ye ki-ta-we wa ba-mu-le - kwa. ki - ru-ngi nnyo

ba-nna-mwa-ndu y'a-ba-la-bi-ri - ra, ki-ru-ngi nnyo a - su-la eyo mu ggu-lu dda - la a - tu-mbi-dde

mu ki-su-lo ky'e-ki-tu - ku - vu a - su-kku-lu-mye y'a-te-ge-ke-ra enju n'a-ba - suu-li-ddwa ki - ru-ngi nnyo

a - ba-si-be aba-ggya-yo eyo mu kko-me-ra mu ku-ja-gu - za, a - ba-tuu-sa mu ssa-nyu, a - ba-jee-mu

bo - kka be ba - bee - ra mu nsi e - y'e - bbu - gu - mu. A - yi Ka - to - nda

bwe wa-fu - lu-ma-nga ng'o-ku-le-mbe-ra e-ggwa-nga lyo mu ddu-ngu, e-nsi ya-yu-gu-ma.

E - ggu - lu na-lyo lya - vu - lu - la, ne Si - na - yi ya - ju - gu - mi - ra.

A - wa - li Ka - to - nda n'e-nsi eno ya - ju - gu - mi - ra. A - wa - li Ka - to - nda

ne Si - na - yi ya - ju - gu - mi - ra. E - nsi ya - yu - guu - ma, e - ggu - lu li - yu - gu - ma,

ne Si - na - yi ya - ju - gu - mi - ra. Baa - la - ba ama - yi - ngi - ra go a - yi Mu - ka - ma,

baa - la - ba ama - yi - ngi - ra go mu ki - tu - ku - vu gy'o - bee - ra. la. A - ba - yi - mbi ba - ku - le - mbe - ra ennyi - ri - ri

a - ba - to - ngoo - li, be ba - koo - be - ra ema - be - ga. Mu ma - kka - ti a - ba - wa - la ne ba - si - mba -

D.S.
 ko nga ba - ku - ba obu - go - ma, nga ba - yi - mba nga ba - zi - na nga ba - buu - ka. A -

gu - lu - mi - zi - bwe Omu - ka - ma O - mu - to - nzi wa - ffe, O - mu - lo - ko - zi wa - ffe agu - lu - mi - zi - bwe Omu - ka - ma.
 Ye Ka - to - nda wa - ffe,
 O - mu - yi - nza y' o - yo,
 e - mi - gu - gu gya - fffe,
 o - gi - tu - tte gyo - nna.

A - gu - lu - mi - zi - bwe Omu - ka - ma a - tu - wo - nya n' o - lu - mbe agu - lu - mi - zi - bwe Omu - ka - ma

A - gu - lu - mi - zi - bwe Omu - ka - ma mu bi - bi - nja by' a - so - ma agu - lu - mi - zi - bwe Omu - ka - ma

Bwa - ka - ba - ka bw' e - nsi, mu - yi - mbi - re Omu - ka - ma, o - bwa - ka - ba - ka bw' e - nsi, mu - yi - mbi - re Omu - ka - ma

bwa - ka - ba - ka bw' e - nsi mmwe mu - yi - mbi - re oyo Ka - to - nda, ku nto - ngoo - li mu - mu - yi - mbi - re ng' a - li -

nnya, ku nto - ngoo - li, mu - mu - yi - mbi - re ng' a - li - nnya, ku nto - ngoo - li mu - mu - yi - mbi - re ng' a - li -

nnya, o - yo atwa - li - bwa eyo mu ggu - lu mu - mu - yi - mbi - re ku nna - nga. E - ddo - boo - zi lye ery' a - maa -

nyi ali - ta - dde li - wu - lu - gu - ma. Mu - te - gee - re, mu - te - gee -
 li - te - ke - mu - la.

re obu - yi - nza bw' O - mu - ka - ma n' e - ki - tyi - bwa kye eyo mu bi - re. Mu - te - gee - re, mu - te - gee -

re obu-yi-nza bw'O-mu-ka-ma n'e-ki-tyi-bwa kye, Ka - to-nda atii-sa mu ki-tu - ku-vu kye

y'a-wa ye-nnyi-ni e-ggwa-nga lye obu-yi-nza n'o-bu-zi-ra. a-gu-lu-mi-zi -
Ka-ba-ka

bwe, Ka-ba-ka a-gu-lu-mi-zi - bwe, Ka-ba-ka a-gu-lu-mi-zi - bwe-nga Ka-to-nda.

30 Duet: Sinai (Theophony)

Nga wa-yi-se esa-tu emye-zi o-ku-va mu Mis-ri, a-ba-la-ma-zi ne ba-gu-mba

o-ku-mpi n'o-lu-so-zi o-lu-yi-ti-bwa Si-na-yi.

Ka-ba-ka a-gu-lu-mi-zi - bwe, Ka-ba-ka a-gu-lu-mi-zi - bwe, Ka-ba-ka a-gu-lu-mi-zi - bwe-nga Ka-to-nda.

Ka-to-nda n'a-ga-mba Mu-sa nti: "Mwe-te-ge - ke, mwe-te-ge - ke ku lw'o-ku-sa - tu,"

nge-nda ku - jja ku lu-so-zi lu - no. Nga mwe-nna mu-la - ba, tu-ku-be enda - gaa-no

mu-fuu-ke ba-nge ka - swa. Kye mba-kuu-ti - ra, te - mu-ge-za okwa-mbu - ka ku lu-so - zi."

31 Chorus

Ba-bu-kee-re-za nko-ko-la nga ba-go-bye dda, ku lu-so-zi lw'O-mu-ka-ma o-lu-tu-ku-vu.



Mu-sa n'a-ku-le-mbe-ra-mu a - ba-tuu-se waa-li na-nnyi-ni ggu-lu n'e-nsi eno.



Mma-mbya ng'a-sa-la atyi wa-li-wo ebi-kuu-no mu ggu-lu ne mu bba-nga. E-ggu-lu ne lya-bi-ka-mu,



lya - ta ne lye-ka-nga, ne li-bwa-tu-ka nnyo, lya-tya ne lye-ka-nga; e - bi-mya-nso bya-li wa-li!



bya - jja olwo lwa-tuu-ka; e - ki-re eki-kwa-fu, kya-te-gee-za bw'a-tuu-se; ne ki-bi-kka amaa-so ge



kya-te-gee-za bw'a-tuu-se; o - lu-so - zi lwo-nna, lwa-tya ne lwe-ka-nga; Mu-kka gwa-lu-bi-kka,



gwa-te-gee-za bw'a-zze. E-kko-ndee-re, e-kko-ndee-re ba-li-fuu-wa n'a-maa-nyi, bo-nna ne ba-ti-ri-bi -



ra. Mu-ka-ma ta - saa-ga "Mwe-ra-bi-ra-ko mwe-nna kye nna-ko-la abe Mis-ri, Mu-ka-ma si-saa-ga.



Nze Ka-to-nda ow'a-maa-nyi na-ba-lee-ta nga mpu-ngu ne mba-tuu-sa ku dde-mbe.



Bwe mu-wu-li-ra eddo-boo-zi lya-nge, mu-li-bee-ra bwe mu-tuu-sa n'e-nda-gaa-no ya-nge, ba-nge ba nno - no



mu ma-wa-nga go-nna, e - mi-re-mbe gyo-nna, mu-li-bee-ra ba-nge, mu-li-bee-ra ba-nge be mma - nyi,



mu-li-bee-ra ba-nge ab'o-lu-bee-re-ra. Nze Ka-to-nda wa-mmwe, te-wa-li Ka-to-nda mu-la -

la oku-ggya-ko nze. E - bi-ra - gi-ro ekku-mi mu-bi-kwa-te bii-bi-no, bye bi-ba-la-ga ekku-bo

e - ri-tuu-ka gye-ndi, mu-bi-kwa-te byo-nna. Byo-nna by'o-la-gi-dde,

byo-nna by'o-tu-ga-mbye tu-jja ku-bi-tuu-sa-nga e - mi-re-mbe n'e-mi-re-mbe gyo-nna.

32 Chorus: Essaala Ya Joshua (Nehemiah)

Ky'e-kyo o - te-nde-re-ze-bwe-nga; ky'e-kyo, o - te-nde-re-ze-bwe-nga Ka - to-nda w'a-ma-ggye Sse-bo.

E - mi-re-mbe gyo-nna, e - mi-re-mbe n'e-mi-re-mbe gyo-nna. A - te-nde-re - ze-bwe, a -

te-nde-re - ze-bwe emi-re-mbe gyo-nna, gyo-nna, dda - la e-ri-nnya lyo li - gu-lu-mi-zi-bwe-nga, li -

gu-lu-mi-zi-bwe. Ky'e-kyo, li - gu-lu-mi-zi-bwe-nga, ky'e-kyo, li - gu-lu-mi-zi-bwe, a -

nti li-ssu-sse n'a-ma-te-ndo go-nna go-nna, li - gu-lu-mi-zi-bwe, li - gu-lu-mi-zi-bwe, li -

ssu-sse n'a-ma - te-ndo, li - gu-lu-mi-zi - bwe

e - ri-nnya lya Ka - to-nda, li - gu-lu-mi-zi

li - ssu-sse n'a-ma - te-ndo, li - gu-lu-mi-zi - bwe,

bwe-nga; e - ri-nnya lya Ka - to-nda li - gu-lu-mi-zi -



Ki-tuu-fu a - li omu, a - li omu, a - li omu, Mu-ka-ma wa-ffe a - li omu
bwe-nga;



a - li omu, a - li omu, a - li omu Mu-ka-ma wa-ffe a - li omu.



E - ya-to-nda e-ggu-lu li - no n'a-li-te-ree-za a - li omu. E - ya-to-nda e - nsi gye-nda -



ba ne bye-ba-za a - li omu. E - ya-ko - la ennya-nja n'e - byo ebi-gi - ri-mu



a - li omu Mu-ka-ma - wa-nge a - li omu. A - li omu a - tu-ga - bi-ra obu-la-mu.



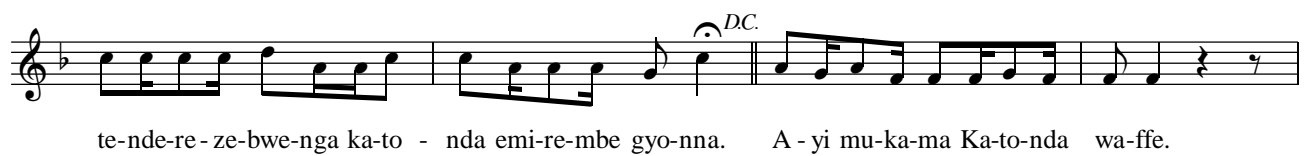
E-ggu-lu li-no n'e-nsi bye-ya-le oku-si-nza Ddu - nda abi-wa-nga-wo nga bi-yi - mba obu-ta-ma-la.



'Ky'e-kyo a - te-nde-re-ze-bwe-nga, ky'e-kyo a - te-nde-re-ze-bwe-nga Ka-to - nda. Ddu -



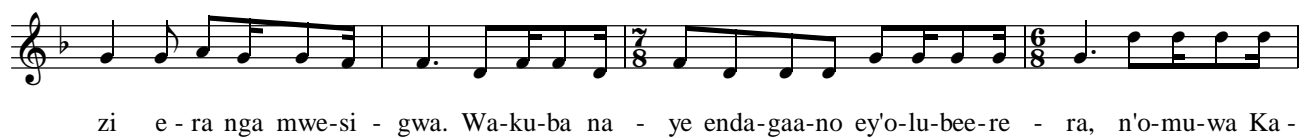
nda, Ddu-nda, Ddu - nda, Ddu-nda, a - te-nde-re-ze-bwe-nga Ka-to - nda. Ddu - nda Mu-ka-ma wa-nge a -



te-nde-re-ze-bwe-nga ka-to - nda emi-re-mbe gyo-nna. A - yi mu-ka-ma Ka-to-nda wa-ffe.



Ggwe wa-lo-nda-wo mu-sa-jja wo edda A - bra - mu bwe wa-ki-ma - nya nti mu-sa-jja wa mmi -



zi e - ra nga mwe-si - gwa. Wa-ku-ba na - ye enda-gaa-no ey'o-lu-bee-re - ra, n'o-mu-wa Ka -

naa-ni, n'a-ma-wa-nga ag'e-mi-ri-raa-no ga - bee-re o - bu-si-ka bwo; ga-bee-re

o - bu-si-ka obw'o-lu-bee-re - ra. Ga - ra. e-kyo n'o-ki - tuu-ki-ri-za a - yi Mu-ka -

ma ku-ba-nga o - li mwe-si-gwa. Ky'e-kyo, o - saa-ni-ra ku-te-ndwa, ky'e-kyo, Sse -

bo oli mwe-si-gwa. O - li mwe-si-gwa Sse-bo, o - li mwe-si-gwa emi-re-mbe gyo-nna.

Wa-tu-nuu-li-ra enna-ku n'o-ku-si-nda kwa ba-jja - jja mu Mis-ri oku-ta-ta - dde. Wa-wu-li - ra

za oku-kaa-ba kw'a-ba-ngi. mu nnya-nja ey'e-mmu - li n'o-ko-la ebi - kuu-no, n'o-ko-la ebi -

kuu-no mu maa-so ga Fa - ra-wo oyo o-mu-wa-la - nye nnyi-ni; bo-nna aba-ntu be Mis-ri ne bi-ba-nyi -

ga oku-ka-ma-la a - nti wa-li oma-nyi ggwe bwe ba-ba-yi - sa obu-bi nku - ga-mbye, n'o-bu-nyoo-mi

bwa-bwe obw'o-lu-bee-re - ra. Kw'o-lwo we-ko-le-ri eri-nnya e - ri-ky-a-li-wo, e - ri-ky-a-li-wo oku-tuu-ka

lee-ro. A - nti wa-ba-ma-nya bwe ba-yi - sa-obu-bi dda-la n'o-bu-nyoo-mi bwa-bwe obw'o-lu-bee-re-ra.

E-nnya-nja eyo, wa-ggya-wu - zaa-mu wa-bi-ri; bo-nna aba-ntu, nga bo - nna ba-tu - nu-la.

mu nnya-nja omwo, baa-so-mo - ka nga wa-ka-lu, bo-nna ba-ntu, baa-so-mo - ka nga wa-ka-lu.

Ky'e-kyo, a - te-nde-re-ze-bwe-nga, ky'e-kyo, a - te-nde-re-ze-bwe-nga, a - te-nde-re-ze-bwe-nga, a -

te - nde - re - ze - bwe - nga e - mi - re - mbe n'e - mi - re - mbe e - mi - re - mbe n'e - mi - re - mbe

e - mi - re - mbe n'e - mi - re - mbe gyo - nna. Gyo - nna emi - re - mbe gyo - nna, gyo - nna emi - re - mbe

gyo - nna gyo - nna gyo - nna gyo - nna gyo - nna. A - mii - na, a - mii - na, a - mii - na.

A.M.D.G. 2/11/2000