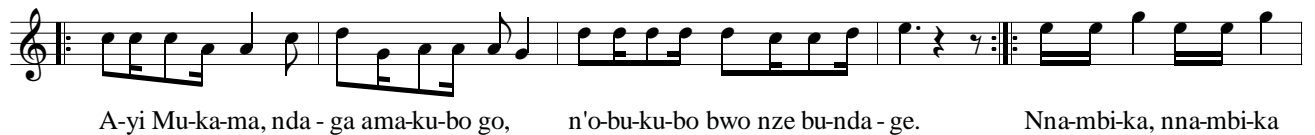
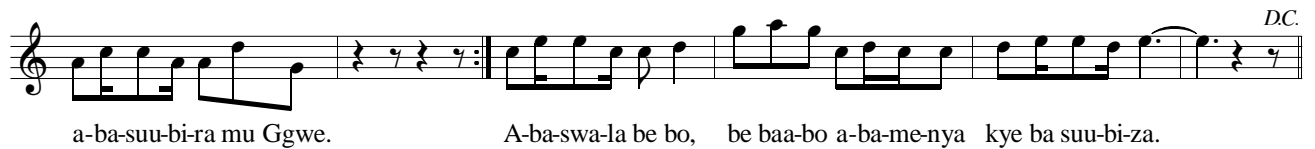
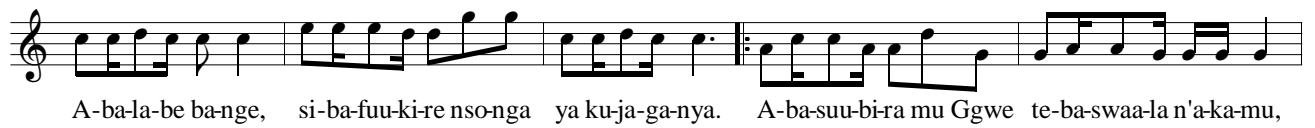


# EWUWO GYE NZIRUKIRA

(Ps 24)

Fr James Kabuye



to - bi - jju - ki - ra, to - bi - jju - ki - ra, nkwe - ga - yi - ri - dde. Ggwe nzi - ju - ki - ra Mu - ka - ma  
wa - nge, ng'e - ki - sa kyo eky'o - lu - bee - re - ra bwe ki - ri dda - la, o - lw'o - bu - lu - ngi bwo.  
Mu - lu - ngi, mu - lu - ngi Mu - ka - ma mu - saa - si - zi, mu - lu - ngi, mu - lu - ngi Mu - ka - ma mu - saa - si - zi nnyo. Mu -  
ma mu - saa - si - zi nnyo. Mu - te - ree - vu ye - nna, n'a - boo - noo - nyi a - ba - yi - gi - ri - za ama - ku - bo  
ge, a - bee - to - wa - ze nnyi - ni a - ba - la - mbi - ka mu bu - tuu - fu, n'a - yi - gi - ri - za abee - to - wa - ze.  
A - ma - ku - bo ge, o - bu - ku - bo bw'O - mu - ka - ma, bwo - nna bwa mu - kwa - no. O - bu - ku - bo bw'O - mu - ka - ma  
bwe - si - ge na bwe - nka - nya bwo - kka kw'a - bo a - ba - kuu - ma e - nda - gaa - no ye, n'e - bi - ra - gi - ro bye. O  
lw'o - ku - bee - ra eri - nnya lyo a - yi Mu - ka - ma o - no - nso - nyi - wa n'e - ki - bi e - ki - ne - ne kye - nko - ze. A - lu -  
wa? A - lu - wa oyo, a - ty - a Omu - ka - ma a - lu - wa? A - lu ma a - lu - wa. A - lu - wa oyo nze mu - yi - gi - ri -  
ze ekku - bo ly'a - na - lo - nda? A - lu - wa? A - lu - wa oyo a - li - nywe - ra mu bi - ru - ngi byo - kka? A - li - jju -  
la omu - ki - sa n'o - lu - lyo lwe lu - li - rya ensi. Mu - ka - ma aba - mu - ty - a a - ba - bee - re - ra ng'o - wo



mu-nju, n'e-nda-gaa-no ye yo-nna agi-ba-la - ga. Nga - si - mbye, nga-si - mbye, nga -



si-mbye amaa-so ga-nge, nga - si-mbye, nga-si-mbye, nga - si-mbye ku Mu-ka-ma. Nga si-mbye ku Mu-ka-ma.



Y'a-li-ggya e - bi-ge-re bya-nge, y'a-li-ggya e - bi-ge-re bya-nge mu mu-te-go gw'a-ba-la - be



ba-nge. Ke-bu - ka ontu-nuu-li-re, e - ra o-nsaa-si-re, ke-bu - ka ontu-nuu-li-re, ndi



bw'o-mu ndi bw'o-mu mu-na-ku dda-la. Tee-wu-lu-zaa-ko, tee-wu-lu-zaa-ko sse-bo



ku bu-zi - to bw'o-mu-ti-ma gwa-nge, o-nzi-gye Sse - bo nze kw'e-byo e-bi-nee - ra - li - ki-ri-za.



La-ba enna-ku ya - nge, la-ba enna-ku ya - nge, n'o-ku-te-ga - na kwa-nge, e-mi-sa-ngo gya-nge gyo-nna gi-nso-nyi -



we. Kuu-ma omwo-yo gwa-nge nne-me ku-swa-la bwe-nti, kuu-ma omwo-yo gwa-nge anti nyi-ru-ki-dde



gy'o-li, ssi-ri-na mu - sa-ngo e - ra mpi-sa bu - lu-ngi, bi-no bi-ntaa - se, bi-no bi-ntaa - se, mw'e-byo e-bi-nyi -



ga. Mpo - nya, mpo - nya a - yi Ka-to-nda wa-nge, mpo-nya, mpo - nya, nsuu-bi-ra mu Ggwe. Mpo Ggwe.