

EBIDDIBWAMU MU MISSA

OKWANIRIZA EVANJILI

Fr. James Kabuye



Mu-si - tu - ke a - b'o-lu - ga-nda, mu-si - tu - ke Kri - stu atuu-se a - tu - bu - li -



re Eki-ga-mbo kye. Yo-ge - ra Mu-ka-ma wa-nge, yo-ge-ra Mu-ka-ma



wa - nge a - nti omu-ddu wo ka-ti awu-li-ra. Yo-ge - ra Mu-ka-ma wa-nge,



yo-ge-ra Mu-ka-ma wa - nge a - nti omu-ddu wo ka-ti awu-li-ra.



Al - le - lu - ia, al - le - lu - ia, alle-lu - ia mu nsi n'e-ggu-lu.

Al - le - lu - ia, al - le - lu - ia, al - le - lu - ia



ALLELUIA - TUVVUNULE

Andante Expressivo

Dolce

Fr Expedit Magembe

Harm & Arrang: Mukisa Michael



Al - le - lu - ia Al - le - lu - ia Al - le - lu - ia Al - le - lu - ia.



Al - le - lu - ia Al - le - lu - ia Al - le - lu - ia

Al-le-lu - ia Al-le-lu - ia

1. Tu - vvu - nu - le Mu - ka - ma, e - bi - wa - ndii - ko ebi - tu - ku - vu

1. Tu - bu - ggu - jje mu mwo - yo, ng'o - yo - ge - ra na - ffe.

Al-le-lu - ia Al-le-lu - ia

2. E - dde - mbe lya Kri - stu, li - bu - ggu - ji - re mu mmwe.

2. E - ki - ga - mbo kya Kri - stu ki - ba - bu - ka - le mu nge - ri ey'e - nsu - sso.

OKWEBAZA KIGAMBO

Fr. James Kabuye

O - gu - lu - mi - zi - bwe, Ye - zu Kri - stu, O - gu - lu - mi - zi - bwe Ye - zu Kri -

stu ayo - ge - dde na - ffe o - gu - lu - mi - zi - bwe, o - gu - lu - mi - zi - bwe.

O - gu-lu-mi-zi - bwe, Ye - zu Kri - stu, o - gu-lu-mi-zi -
 O - no ye Mwa-na wa-nge, Y'o-yo gwe ntu - mye nze.

bwe Ye - zu Kri - stu ayo-ge-dde na - ffe o - ugu-lu-mi-zi - bwe, o - gu-lu-mi-zi - bwe.

MU KUTEGEKA EBITONE

Fr. James Kabuye

Ka - to-nda Lu-ga-ba a - gu-lu-mi-zi-bwe, Ka - to-nda Lu-ga-ba a - gu-lu-mi-zi-bwe. Ka -
 to-nda Lu-ga-ba, a - gu-lu-mi-zi-bwe, a - gu-lu-mi-zi-bwe emi - re-mbe n'e-mi-re-mbe.

GGWE TUYAMBE

Ggwe tu - ya - mbe a - yi Mu - ka - ma o - tu - we ebye - taa - go bya - ffe.

FFENNA TUTENDE DDUNDA

Fr Joseph Namukangula

Ffe - nna tu - te - nde Ddu - nda wa - ffe. Y'o-no asaa - ni - dde ette - ndo

TUKIKUSABA

Musical score for 'TUKIKUSABA' in 2/4 time, key of B-flat major. The score consists of a vocal line and a piano accompaniment. The lyrics are: Tu - ki - ku - sa - ba a - yi Mu - ka - ma a - yi mu - ka - ma tu - saa - si - re.

TUKIKUSABA MUKAMA

Musical score for 'TUKIKUSABA MUKAMA' in 2/4 time, key of B-flat major. The score consists of a vocal line and a piano accompaniment. The lyrics are: Tu - ki - ku - sa - ba Mu - ka - ma Mu - ka - ma o - tu - saa - si - re, o - tu - saa - si - re.

KONSEKRATIO NG'EWEDDE

Eky'amagero eky'okukkiriza I

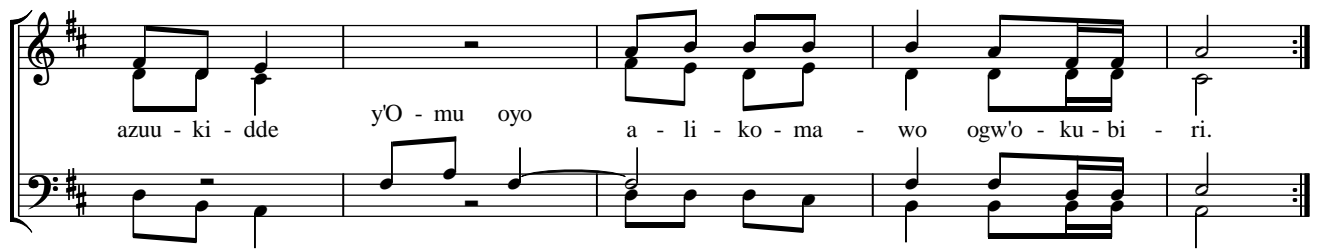
Fr. James Kabuye

Musical score for 'KONSEKRATIO NG'EWEDDE I' in 2/4 time, key of B-flat major. The score consists of a vocal line and a piano accompaniment. The lyrics are: E - ky'a - ma - ge - ro eky'o - ku - kki - ri - za:
Tu - la - ngi - ri - ra a - yi Mu - ka - ma, tu - la - ngi - ri - ra oku - fa kwo,
n'o - ku - zuu - ki - ra, n'o - ku - li - nnya kwo eyo mu ggu - lu o - ku - tuu - ka lw'o - li - jja.

Eky'amagero eky'okukkiriza II

Fr. James Kabuye

Musical score for 'KONSEKRATIO NG'EWEDDE II' in 2/4 time, key of D major. The score consists of a vocal line and a piano accompaniment. The lyrics are: E - ky'a - ma - ge - ro eky'o - ku - kki - ri - za!
Tu - la - ngi - ri - ra, Kri - stu eya - fa tu - la - ngi - ri - ra Kri - stu

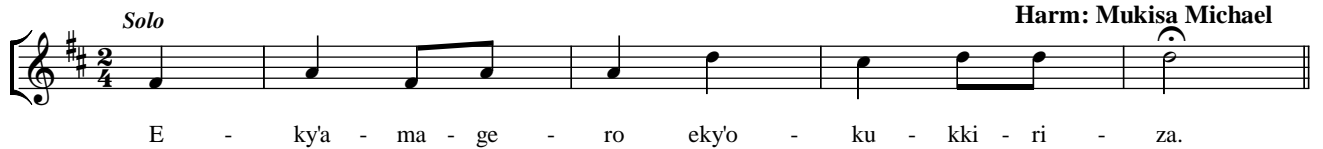


azuu - ki - dde y'O - mu oyo a - li - ko - ma - wo ogwo - ku - bi - ri.

Eky'amagero eky'okukkiriza III

Laurence Ssemanda
Harm: Mukisa Michael

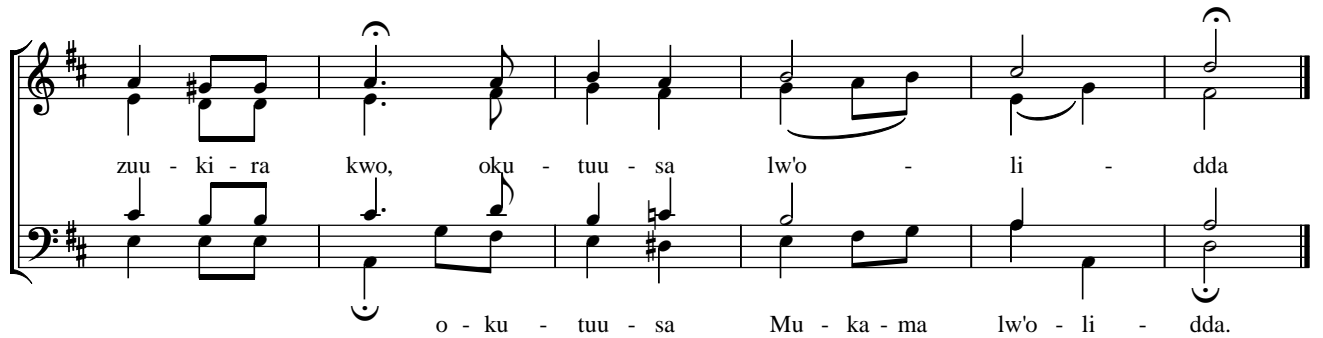
Solo



E - ky'a - ma - ge - ro eky'o - ku - kki - ri - za.

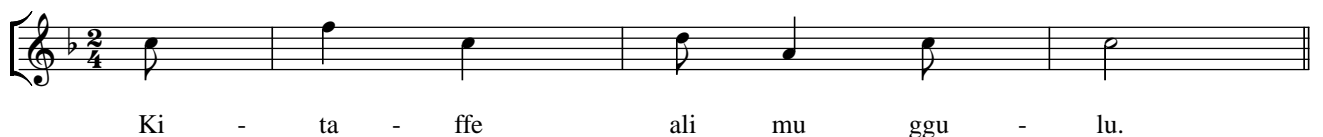
Tutti

Tu - la - ngi - ri - ra oku - fa kwo a - yi Mu - ka - ma, twa - tu - la oku -



zuu - ki - ra kwo, oku - tuu - sa lw'o - li - dda
o - ku - tuu - sa Mu - ka - ma lw'o - li - dda.

KITAFFE ALI MU GGULU



Ki - ta - ffe ali mu ggu - lu.



E - ri - nnya lyo li - tii - bwe o - bwa - ka - ba - ka bwo bu - jje.



1. Tu - we lee - ro emme - re ya - ffe, e - yo gy'o - tu - wa bu - li - jjo.



2. Tu - so-nyi-we ebi - bi bya - ffe nga na-ffe bwe tu - so-nyi-wa aba - tu-ko-la obu - bi.



3. Mu ku-ke-me - bwa Taa - ta to - tu - twa-la, na - ye tu-lo-ko - le mu bu - bi.

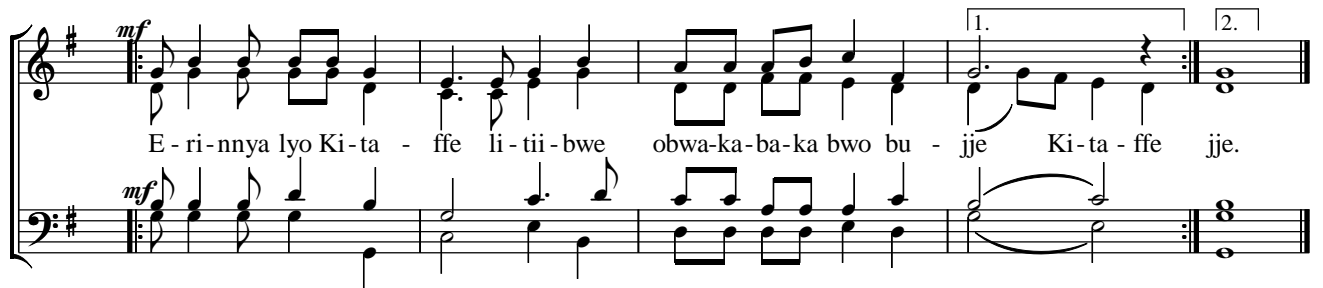
KITAFFE

Allegro non troppo

Ssemanda Lawrence



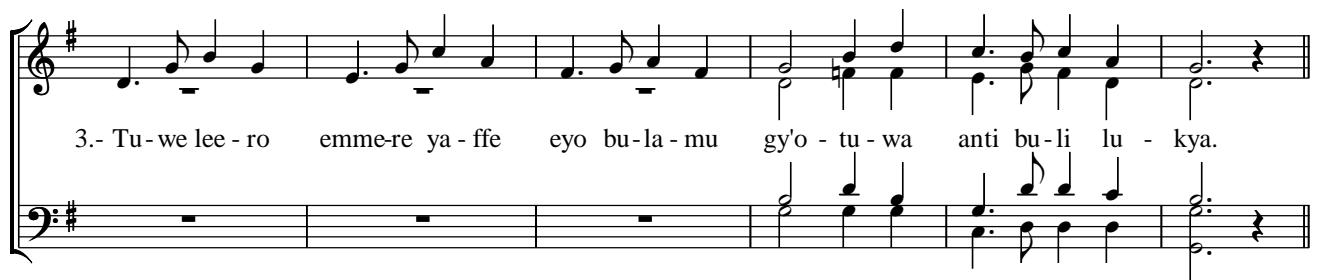
1. Ki - ta - ffe ali mu ggu - lu obu-yi-nza, n'e - ki - tii - bwa bi-be gy'o - li.



E - ri-nnya lyo Ki-ta - ffe li-tii-bwe obwa-ka-ba-ka bwo bu - jje Ki-ta - ffe jje.



2. Byo-ya-ga - la bi - ko-le-bwe mu nsi yo-nna nga bwe bi - ko - le-bwa mu ggu - lu.



3.- Tu-we lee - ro emme-re ya - ffe eyo bu-la - mu gy'o - tu - wa anti bu-li lu - kya.



4. Tu-so-nyi-we ebi-bi bya-ffe nga bwe tu-so-nyi-wa, bwe tu-so-nyi-wa abo aba-tu-ko-le-ra o-bu - bi

5. To-tu-twa-la, to-tu-twa-la, to-tu-twa-la mu ku-ke-me - bwa na-ye tu-lo-ko-le mu bu - bi.

Ggwe Ka-ba - ka ow'o - bu-yi-nza n'e - ki-tii-bwa e - mi-re - mbe n'e-mi-re - mbe.

MISSA NG'EWEDDE

Missa Ewedde

Fr. James Kabuye

Mi - ssa ewe- dde mu - ge-nde mi - re-mbe. Ka - to-nda yee-ba - le. Twe -
 Ka - to-nda yee-ba - le
 Ka - to-nda yee-ba - le
 Ka - to-nda yee-ba - le
 Ka - to-nda yee-ba - le
 Le - ka mmu-we-re - ze
 Le - ka mpe-re ka - ti

ya-nzi-zza Mi - ssa gye - nso - mye. twe - ya-nzi-zza Taa-ta we-ba - le twe - ya-nzi-zza.
 bi - ru - ngi by'o - ga - bye.
 ndi-dde by'o - ga - ba.
 nfu-nye omwa - na.
 maa-nyi ge - nfu - nye.
 mi - sa - na n'e - ki - ro.
 mu - tu - tte gye - nda - ga.