

ABAFUZI MUTEGE AMATU

Wis 6:2-12

Fr James Kabuye

Mmwe mu-te - ge ama-tu, ba-ka-ba-ka b'e-nsi mu-te - ge ma-tu.

Mmwe aba-la-mu-zi mu-te - ge ama-tu, mmwe aba-fu - zi b'a-ma-wa-nga mwe-nna mu-yi-ge mu-te - ge ama-tu, mu-yi - ge mu-te-ge ama-tu. Mmwe aba-fu - zi aba-li ewa-la abe-wa - na olw'o-bu-nyi bw'a-ba-ntu mmwe be mu-li-na; mu-yi - ge mu-te-ge ama-tu. Mu-ka-ma Ka - to-nda y'a-ba-wa obu - yi-nza, o - bu-fu - zi bwo-nna bu-va w'o-li a - li wa-ggu-lu dda-la.

Mu-li ba-we-re - za be mu bwa-ka-ba-ka bwe. Mu-li ba-fu - zi be, mu bwa-ka-ba-ka bwe bwe mu-ta - fu - za bwe-si-mbu, zi-ba - sa-nze, bwe mu-ta-kwa - ta ttee-ka lye, zi-ba - sa-nze; bwe mu-ta-ko - za mmwe bwe-nka-nya ne mu-ta-go-nde-ra Ka-to-nda kya-ya-ga-la a - li-ba-ggya - ko ki-bwa-tu-ki-ra mu nge-ri e-y'e-ntii-sa. Mu-yi - ge, mu-yi-ge, mu-te - ge ama-tu. Mu-yi - ge, mu-yi-ge mu-te - ge ama-tu. Ku - ba-nga Ddu-nda aba-fu-zi a - ba-la-mu-za bu - ka-mbwe nnyo, Ddu-nda aba-fu - zi aba-la-mu-za bu - ka-mbwe nnyo; Ddu-nda aba-fu - zi aba-la-mu-za bu - ka-mbwe nnyo, a-ba-bo-ne-re - za nnyo ta-ba-saa-si - ra, kyo-kka omu-na-ku a-mu-saa-si-ra nnyo n'a-mu-ddi-ra-mu.

Ka - to-nda ta-li-na gw'a-tya, ta-li-na gwa-tya olw'e-ki-tii-bwa kye, bo-nna bo-nna bo-nna
 ye ya-ba-ko-la a-ba-ga-gga n'a-baa-vu aba-yi-sa ki-mu, ta-so-so-la ba-ntu o - lw'o-ku-ba nti baa-vu,
 ta - so - so - la ba-ntu o - lw'o-ku-ba ba-ga-gga. Kyo-kka ab'o-bu-yi-nza ku-nsi ba-ku-la - mu -
 lwa na bu-ka-mbwe. N'o-lw'e-kyo mmwe aba-fu-zi ku-nsi e-bi-ga-mbo bya-nge bi-no bi-ba-kwa-ta -
 ko bya-mmwe dda-la bi-jja ku-ba-wa ama-ge-zi, bi-ba-zi - yi-ze oku-gwa obu - bi. Ku-ba-nga
 e - bi-tuu-fu a - ba-bi-kuu - ma obu-lu-ngi na-bo bi - ba-fuu-la ba-tuu - fu. A - te abo
 a - ba-bi-ku - tte mu bu-tuu - fu gye bu - jja ba - li - bee - ra - ko kye ba - dda - mu. Mu -
 yaa - ya - ni - re, mu - yaa - ya - ni - re nnyo e - bi - ga - mbo bya-nge. Mu-bya - ga -
 le nnyo, mu-bya - ga - le nnyo bi - na-ba-gu-nju - la. a - ma-ge - zi ki - ta-ngaa - la,
 mu go te-mu - li lu-fu n'a-ka - mu ga - sa - ngi - ka ng'o-ga-noo -
 nya. Te-ga-ba-bu - la aba-ga-noo - nya. Ga - be - soo - ka
 a - ba-gaa-ga - la, ga - be - yo-le - ka ma-ngu dda - la. Soo-ke-ra ku go
 ku ma-lii - ri, to - jja ku - sa - nga bu - zi-bu n'a-ka - mu. Mu



Nze nna-sa-la-wo, nze nna-sa-la-wo oku-ga-twa - la tu-bee-re wa-mu ffe-mbi, mu bu-la-mu bwa-nge.



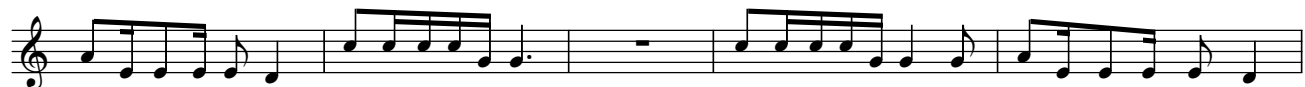
A-nti nga mmaa-nyi ga - na-mbu-li-ri-ra, a-nti nga mmaa-nyi ga jja ku-nsi-tu-la, ga-nku-ba-gi-ze



mu bi-zi-bu bya-nge ga-mpa-ni - ri-re mu bi-zi-bu bya-nge. Mu ba-ntu ba-ku - lu nja ku-te-nde -



bwa, mu ba-ge-zi bo-nna nja ku-ba-li - rwa mu ba-ge-zi sso nga ndi mu-to. Ba-jja ku-si-ri-ka nga



ssi-na-yo-ge-ra nze, ba-jja ku-si-ri-ka. Ba-jja ku-si-ri-ka nga ba-lo-woo-za kw'e-byo



bye nna-yo-ge-ra. Nga nta-ndi-se oku-la-mya ba-jja ku-si-ri-ka, ba-jja kwe-wu-nya ba -



kwa-te ku mu - mwa. E - bi-ga-mbo bya-nge ba - na - bi-wu - li-ra n'a-ba-li - jja bo-nna



nze mba-le-ke-re eki-jju-ki - zo eky'e-mi-re-mbe; nja ku-la-mu-la-ngaa bu-lu - ngi aba-ntu bo-nna.



Nja ku-la-mu-la-ngaa bu-lu - ngi ama-wa-nga go-nna, nja ku-bee-ra wa-ki-sa mu ba-ntu ba-nge;



mu-zi-ra ata-me-ggwa mu nta - lo. Bw'o-yi-ta na - go to-sa-nga bi-ku-su-mbu - wa wa-bu-la ssa -



nyu ssa na ku-ja-gu - za ga - kuu-me to-ga-za-nyi - sa, ga-nywe-ze, ga-go-be-re-re-nga. ga -



ga-go-be-re-re-nga. Bw'o-yi-ta mu go o-bu-la-mu obw'o-lu-bee-re - ra o-jja ku bu-fu - na.